



# Lawrence University (0-0)

vs.

# Dominican (Ill.) University (0-0)

Saturday, Nov. 15, 3:00 p.m.

Alexander Gymnasium, Appleton, Wis.



## 2014-15 LAWRENCE SCHEDULE

Date	Opponent	Time/Res.
11/15	<b>Dominican (Ill.)</b>	<b>3:00 pm</b>
11/18	at Wisconsin Luth.	7:00 pm
11/22	<b>Ripon</b>	<b>3:00 pm</b>
12/3	<b>Beloit</b>	<b>7:30 pm</b>
12/6	at Illinois College	3:00 pm
12/9	at Lake Forest	7:30 pm
12/13	<b>UW-Stevens Point</b>	<b>3:00 pm</b>
12/17-18 Wisconsin Dells Classic		
12/17	vs. Grand View	5:30 pm
12/18	vs. Viterbo	7:30 pm
1/3	at Grinnell	3:00 pm
1/7	<b>St. Norbert</b>	<b>7:30 pm</b>
1/10	at Monmouth	3:00 pm
1/13	<b>Carroll</b>	<b>7:30 pm</b>
1/17	<b>Cornell</b>	<b>5:00 pm</b>
1/21	at Ripon	7:30 pm
1/24	at Knox	3:00 pm
1/27	<b>Lake Forest</b>	<b>7:30 pm</b>
1/31	<b>Knox</b>	<b>3:00 pm</b>
2/4	at St. Norbert	7:30 pm
2/7	<b>Illinois College</b>	<b>3:00 pm</b>
2/10	at Beloit	7:30 pm
2/18	at Carroll	7:30 pm
2/21	<b>Monmouth</b>	<b>3:00 pm</b>
2/27/28	MWC Tournament	TBA

Home games in bold

## PROBABLE STARTERS



### Lawrence

Forward	Trace Sonnleitner	Jr.	6-5
Forward	Andrew Borresen	Sr.	6-3
Guard	Ryan DePouw	Jr.	6-3
Guard	Jamie Nikitas	So.	6-0
Guard	Troy Miller	Jr.	6-0



### Dominican

Forward	Ryan Risley	Jr.	6-4
Forward	Kevin Fervil	So.	6-6
Guard	Mike Bobek	Jr.	6-1
Guard	Josh Mayberry	So.	6-3
Guard	Quinn Pokora	So.	6-1

## VIDEO WEBCAST

▶A free video webcast is available at: <http://portal.stretchinternet.com/lawrence/>. Dick Knapinski and Anthony Totoraitis are on the call for Lawrence home games. A link for Lawrence webcasts is on the Lawrence basketball page.

## THE COACHES

▶Joel DePagter (Lawrence 1998), the 1997 Midwest Conference Player of the Year and 2009 Midwest Conference Coach of the Year, is in his eighth season at Lawrence and has a record of 97-68 (.588).

▶Mark White (Macalester 1984) is in his 17th season at Dominican.

## THE SERIES

▶In a series that goes back to the 1969-70 season, Dominican holds a 3-1 edge. Lawrence's lone win in the series came in the 2007-08 season opener, which also was the first game for current Lawrence head coach Joel DePagter.

## LAST MEETING

A surge midway through the second half allowed Lawrence to post an 87-72 nonconference win on Nov. 16, 2007, at Dominican (Ill.) in the River Forest Classic.

Andy Hurley and Ben Rosenblatt scored 15 points apiece to pace the attack for Lawrence in the regular-season debut of first-year head coach Joel DePagter.

Hurley narrowly missed a double-double, as he pulled down a game-high nine rebounds. Ryan Kroeger added 11 points for Lawrence.

The Vikings began pulling away late in the first half, with Lawrence going on a 13-6 run over the final 5:17 to build a 45-38 lead at the break.

Dominican battled back and cut the lead to 58-55 on Jose Garcia's layup with 12:44 left in the game.

Lawrence scored the next five points, as Ryan Wendel hit a jumper and Tommy Schmidt buried a 3-pointer. After a basket by the Stars, Lawrence scored the next nine points, capped by Kroeger's 3-pointer, to take a 72-57 lead with 9:03 remaining.

Dominican never got closer than 12 points after that, and the Vikings led by as many as 21 points down the stretch.

## VIKINGS UPDATE

►Lawrence has to reload to start the 2014-15 season after losing eight seniors to graduation. Three starters, guard Chris Siebert, guard Brian Gyszkiewicz and forward Chase Nelson, were in that group of seniors. Siebert concluded a stellar career by scoring 1,360 points, good for fourth place on Lawrence's career list. He also earned All-Midwest Conference honors three times, including a first-team selection in 2013-14.



►Despite losing that sizeable group of seniors, Lawrence does return two of its top three scorers from a season ago.

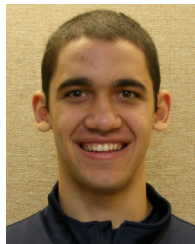
►The Vikings are 3-4 in season openers under head coach Joel DePagter. Three of those four losses came to nationally-ranked teams from UW-Stevens Point.

►The group of returning players is paced by senior swingman Ryan DePouw (Oconto, Wis./Oconto), who averaged 15.6 points and 5.0 rebounds per game last season. DePouw shot an impressive 53.7 percent from the floor, including 43.8 percent from 3-point range. DePouw enters this season with 753 career points, just 247 shy of joining the 1,000-point club.



Ryan DePouw

►The No. 3 scorer on the team a season ago was guard Jamie Nikitas (Glenview, Ill./Glenbrook South). Nikitas aver-



Jamie Nikitas



## 2013-14 MWC Standings

	MWC		Overall	
	W	L	W	L
St. Norbert	18	0	25	2
Grinnell	13	5	19	6
Carroll	12	6	15	9
Ripon	12	6	15	9
Lawrence	10	8	12	11
Illinois College	9	9	13	10
Lake Forest	7	11	8	15
Beloit	7	11	9	14
Cornell	6	12	9	14
Monmouth	5	13	6	17
Knox	0	18	1	22

## Games Saturday

Dominican (Ill.) at Lawrence  
 Marian at Beloit  
 George Fox vs. Grinnell  
 Univ. of Chicago at Lake Forest  
 UW-Stout vs. Ripon  
 Webster at Monmouth  
 St. Norbert at UW-Oshkosh  
 Concordia Chicago at Knox  
 Martin Luther at Carroll

aged 14.3 points and led the team at 5.6 rebounds per game. Nikitas shot 51.2 percent from the floor, including 39.2 percent from beyond the arc.

►Nikitas also showed his defensive prowess a season ago by piling up 56 steals, an average of 2.4 per game.

►It looks like senior forward Andrew Borresen (West Bend, Wis./Living Word Lutheran) will make his first career start in the opener. Borresen was a key player off the bench last season with the ability to take the ball inside or stretch the defense by shooting from beyond the arc.

►Lawrence was chosen to finish fifth in the Midwest Conference in a pre-season poll of league coaches. De-

## DEPAGTER'S RECORD

Lawrence head coach Joel DePagter is in his eighth season as the Vikings' coach. He is the only person in Midwest Conference history to be named both Player of the Year (1997) and Coach of the Year (2009).



Overall Record	97-68
Home	50-24
Away	44-38
Neutral	3-6

Midwest Conference Record	75-45
Home	41-21
Away	35-26

Nonconference Record	22-23
Home	10-4
Away	9-13
Neutral	3-6

## DePagter vs. the MWC

Beloit	9-3
Carroll	8-8
Cornell	4-2
Grinnell	5-8
Illinois College	11-2
Knox	12-1
Lake Forest	8-4
Monmouth	12-0
Ripon	6-8
St. Norbert	5-10

## DePagter vs. Nonconference Opponents

Ashford	0-1
Cal Lutheran	0-1
Caltech	1-0
Coe	1-1
Concordia (Ill.)	1-0
Dominican (Ill.)	1-0
Elmhurst	0-2
Florida College	1-0
Johnson and Wales (Fla.)	1-0
Lakeland	1-0
Manchester	0-1
Marian	2-2
Mount St. Vincent	1-0
Nova Southeastern	1-0
St. Mary's (Md.)	0-1
Southeastern (Fla.)	0-1
Trinity (Fla.)	1-0
Washington (Mo.)	0-1
Wheaton (Ill.)	0-1
Wisconsin Lutheran	3-0
UW-Oshkosh	1-3
UW-Stevens Point	1-6
UW-Whitewater	0-1

fending champion St. Norbert and Ripon were tied for first place in the poll.

►The Vikings were fifth in the league in scoring offense a season by averaging 81.0 points per game. Lawrence was seventh in scoring defense at 78.1 points per contest.

►Lawrence was one of the best shooting teams in the league a season ago and finished fourth in field goal percentage at 50.1 percent. The Vikings were sixth in field goal percentage defense at 46.6 percent.

►Lawrence ranked third in the league last season in 3-point shooting at 40.9 percent. The Vikings were sixth in the league in defending the 3-pointer at 38.9 percent.

### SCOUTING DOMINICAN

►Dominican is making its first trip to Lawrence during Joel DePagter's tenure as head coach. In the only previous meeting in DePagter's time as head coach, the game was played in River Forest, Ill.

►Dominican is coming off a 4-21 season that included a 3-17 mark in the Northern Athletics Conference. The Stars completed last season on a seven-game losing streak.

►Guard Josh Mayberry was the leading scorer for Dominican as a freshman in 2013-14. He ranked fourth in the Northern Athletics Conference at 16.1 points per game last season. The Stars lost double-digit scorers Taylor DeRoo and Logan Harris to graduation.

►Mayberry also is the leading returning rebounder for the Stars. He averaged 5.4 rebounds per game last season.

►Mayberry also ranked in the top 10 in the Northern Athletics Conference at 2.8 assists per game. He handed out



Lawrence University Basketball Facts	
Location	Appleton, Wis.
Founded	1847
Enrollment	1,450
President	Mark Burstein
Affiliation	NCAA Division III
Conference	Midwest Conference
Nickname	Vikings
School Colors	Blue and White
Home Arena	Alexander Gymnasium (1929, capacity 1,100)
Director of Athletics	Mike Szkodzinski
First season of basketball	1896
Seasons of basketball	111
All-time record	952-1048-1 (.476)
Midwest Conference titles	8 1924-25, 1942-43, 1996-97, 2003-04, 2004-05, 2005-06, 2007-08, 2008-09
MWC Tournament titles	6 1997, 2004, 2005, 2006, 2008, 2009
NCAA Tournament appearances	6 1997, 2004, 2005, 2006, 2008, 2009

71 helpers a season ago.

►The Stars led the league in free-throw shooting last season at 74.3 percent last season, and Mayberry was tops on the team at 78.7 percent.

►Mayberry also ranked fourth in the conference in steals at 1.68 per game a season ago.

►Dominican ranked last in the Northern Athletics Conference in scoring offense last season at 68.4 points per game. The Stars were seventh in scoring defense at 78.0 points per contest.

►Dominican ranked 10th in the 11-team Northern Athletics Conference in field goal percentage at 42.4 percent. The Stars were 10th in field goal percentage defense at 47.6 percent.

►The Stars hit at a 33.8 percent clip from beyond the arc last season while opponents shot 36.4 percent from 3-point range.

1,000 POINT CLUB		
Player	Points	Years
Chris Braier	1,565	2002-06
Joel Dillingham	1,554	1989-93
Ryan Kroeger	1,537	2005-09
Chris Siebert	1,360	2010-14
Doug Fyfe	1,342	1972-76
Adam LaVoy	1,273	1997-2001
Joel Ungrodt	1,247	1961-64
Matt Miota	1,246	1987-91
Joel DePagter	1,243	1995-98
Ben Zagorski	1,175	1994-98
Mike Fogel	1,175	1975-79
Reggie Geans	1,160	1985-89
John Dekker	1,117	2006-10
Shawn Koerner	1,115	1985-89
Richard Schultz	1,088	1964-67
Tom Steinmetz	1,073	1963-66
Jason Holinbeck	1,051	2001-05
Strat Warden	1,042	1969-72
Bob Townsend	1,031	1966-69
Jim Rasmussen	1,030	1958-61
Rob Cohen	1,005	1976-80

**2013-14 Lawrence Basketball**  
**Lawrence University Combined Team Statistics (as of Nov 12, 2014)**  
**All games**

Overall record: 12-11 Conf: 10-8 Home: 8-3 Away: 3-7 Neutral: 1-1

#	Player	gp-gs	min	avg	Total		3-Point		F-Throw		Rebounds				pf	dq	a	to	blk	stl	pts	avg
					fg-fga	fg%	3fg-fga	3fg%	ft-fa	ft%	off	def	tot	avg								
24	Chris Siebert	23-22	734	31.9	132-282	.468	72-156	.462	76-93	.817	15	78	93	4.0	46	0	67	60	4	12	412	17.9
11	Ryan DePouw	23-22	674	29.3	115-214	.537	35-80	.438	94-120	.783	25	89	114	5.0	60	1	61	49	9	16	359	15.6
03	Jamie Nikitas	23-22	705	30.7	104-203	.512	29-74	.392	92-134	.687	13	115	128	5.6	59	2	57	44	11	56	329	14.3
12	Tyler Mazur	23-1	419	18.2	72-155	.465	39-109	.358	16-19	.842	9	35	44	1.9	25	0	28	13	6	8	199	8.7
20	Davis DeWolfe	3-2	52	17.3	9-18	.500	1-7	.143	4-5	.800	6	5	11	3.7	11	1	2	8	2	0	23	7.7
05	Brian Gryszkiewicz	21-20	556	26.5	46-90	.511	3-13	.231	25-53	.472	11	33	44	2.1	54	1	81	28	3	33	120	5.7
25	Trace Sonnleitner	23-0	326	14.2	50-103	.485	20-48	.417	4-5	.800	11	40	51	2.2	33	0	14	22	3	6	124	5.4
22	Chase Nelson	23-21	467	20.3	47-71	.662	0-0	.000	23-41	.561	28	71	99	4.3	47	0	9	18	11	10	117	5.1
15	Max Burgess	22-3	293	13.3	27-59	.458	20-48	.417	5-5	1.000	10	8	18	0.8	23	0	21	9	0	7	79	3.6
30	Troy Miller	15-0	82	5.5	7-19	.368	6-16	.375	5-7	.714	1	11	12	0.8	9	0	9	9	0	1	25	1.7
04	Mitch Willer	11-0	33	3.0	8-13	.615	0-0	.000	0-0	.000	2	9	11	1.0	4	0	1	2	3	0	16	1.5
00	Tom Antosz	18-1	96	5.3	6-15	.400	0-2	.000	12-17	.706	0	8	8	0.4	20	0	14	12	1	2	24	1.3
33	Andrew Borresen	17-0	105	6.2	8-17	.471	6-11	.545	0-1	.000	7	8	15	0.9	12	0	4	7	0	2	22	1.3
23	Peter Winslow	6-0	13	2.2	1-2	.500	0-1	.000	3-4	.750	0	2	2	0.3	0	0	1	0	0	0	5	0.8
32	Adam Breseman	8-1	17	2.1	2-3	.667	1-2	.500	1-2	.500	1	0	1	0.1	2	0	2	2	0	0	6	0.8
21	Shane Cullian	10-0	27	2.7	0-2	.000	0-0	.000	4-4	1.000	1	1	2	0.2	5	0	0	0	1	0	4	0.4
Team											35	34	69				1					
Total.....		23	4599		634-1266	.501	232-567	.409	364-510	.714	175	547	722	31.4	410	5	371	284	54	153	1864	81.0
Opponents.....		23	4600		641-1376	.466	176-452	.389	338-478	.707	249	533	782	34.0	442	-	282	274	62	148	1796	78.1

TEAM STATISTICS	LU	OPP	Date	Opponent	Score	Att.
SCORING	1864	1796	11/15/13	WISCONSIN LUTHERAN COLLEGE	w 92-77	821
Points per game	81.0	78.1	11/16/13	at UW-Stevens Point	L 73-99	1536
Scoring margin	+3.0	-	11/23/13	ELMHURST COLLEGE	L 81-96	727
FIELD GOALS-ATT	634-1266	641-1376	* 12/4/13	CARROLL UNIVERSITY	w 76-67	671
Field goal pct	.501	.466	* 12/11/13	at Cornell College	L 69-75	165
3 POINT FG-ATT	232-567	176-452	* 12/14/13	at Knox College	w 92-47	225
3-point FG pct	.409	.389	* 12/16/13	ILLINOIS COLLEGE	w 88-64	567
3-pt FG made per game	10.1	7.7	12/18/13	vs Mount Saint Vincent	w 82-59	58
FREE THROWS-ATT	364-510	338-478	12/20/13	vs UW-Whitewater	L 56-73	122
Free throw pct	.714	.707	* 1/4/14	at St. Norbert College	L 68-81	892
F-Throws made per game	15.8	14.7	* 1/11/14	RIPON COLLEGE	L 66-69	1067
REBOUNDS	722	782	* 1/14/14	at Lake Forest College	L 76-83	465
Rebounds per game	31.4	34.0	* 1/18/14	GRINNELL COLLEGE	w 111-94	1100
Rebounding margin	-2.6	-	* 1/22/14	at Ripon College	L 81-95	395
ASSISTS	371	282	* 1/25/14	KNOX COLLEGE	w 88-73	645
Assists per game	16.1	12.3	* 1/28/14	at Carroll University	L 78-84	284
TURNOVERS	284	274	* 2/1/14	MONMOUTH COLLEGE	w 67-53	688
Turnovers per game	12.3	11.9	* 2/5/14	ST. NORBERT COLLEGE	L 69-79	822
Turnover margin	-0.4	-	* 2/8/14	at Illinois College	w 82-79	500
Assist/turnover ratio	1.3	1.0	* 2/12/14	at Beloit College	w 97-83	250
STEALS	153	148	* 2/15/14	CORNELL COLLEGE	w 77-68	912
Steals per game	6.7	6.4	* 2/19/14	LAKE FOREST COLLEGE	w 84-76	621
BLOCKS	54	62	* 2/22/14	at Grinnell College	L 111-122	1397
Blocks per game	2.3	2.7				
ATTENDANCE	8641	6289				
Home games-Avg/Game	11-786	10-611				
Neutral site-Avg/Game	-	2-90				

\* - Conference game

Score by Periods	1st	2nd	Totals
Lawrence University	940	924	1864
Opponents	866	930	1796

**2013-14 Lawrence Basketball**  
**Lawrence University Points-Rebounds-Assists (as of Nov 12, 2014)**  
**All games**

Opponent	Date	Score		00	03	04	05	11	12	15
				ANTOSZ,TOM	NIKITAS,JA	WILLER,MIT	GRYSZKIEWI	DEPOUW,RYA	MAZUR,TYLE	BURGESS,MA
WISCONSIN LUTHERAN C	11/15/13	92-77	w	0-0-0	12-9-2	2-0-0	12-1-3	14-6-3	3-3-0	0-2-2
at UW-Stevens Point	11/16/13	73-99	L	2-0-1	11-2-3	DNP	0-2-2	15-7-1	10-2-0	2-0-0
ELMHURST COLLEGE	11/23/13	81-96	L	5-0-0	7-3-1	0-0-0	3-2-6	2-5-4	8-3-0	6-0-0
CARROLL UNIVERSITY	12/4/13	76-67	w	0-1-1	22-6-4	DNP	1-3-4	18-1-1	21-2-0	0-0-1
at Cornell College	12/11/13	69-75	L	3-0-1	17-7-2	DNP	0-1-0	17-1-3	8-1-1	0-0-0
at Knox College	12/14/13	92-47	w	3-1-1	9-10-6	2-4-1	2-2-4	8-2-0	7-1-2	11-0-2
ILLINOIS COLLEGE	12/16/13	88-64	w	0-0-0	13-2-5	4-1-0	1-0-6	12-3-3	16-4-1	6-1-0
vs Mount Saint Vincent	12/18/13	82-59	w	0-1-0	13-8-1	0-1-0	6-1-4	15-3-3	17-2-1	7-3-3
vs UW-Whitewater	12/20/13	56-73	L	DNP	14-8-4	DNP	3-2-0	17-4-2	5-2-1	3-1-0
at St. Norbert College	1/4/14	68-81	L	DNP	22-2-0	DNP	6-1-5	16-4-0	8-3-1	0-1-4
RIPON COLLEGE	1/11/14	66-69	L	0-0-0	4-6-2	DNP	6-2-5	9-7-2	16-1-0	3-1-0
at Lake Forest College	1/14/14	76-83	L	DNP	17-9-0	DNP	16-2-6	18-5-1	5-1-0	7-2-0
GRINNELL COLLEGE	1/18/14	111-94	w	3-1-2	22-6-1	2-5-0	12-5-5	17-11-4	18-4-5	DNP
at Ripon College	1/22/14	81-95	L	2-1-2	15-2-0	DNP	2-0-0	14-3-7	7-1-6	0-0-0
KNOX COLLEGE	1/25/14	88-73	w	2-0-0	16-4-5	4-0-0	8-0-6	21-5-3	3-1-1	3-2-2
at Carroll University	1/28/14	78-84	L	0-0-0	8-4-3	DNP	2-1-4	16-6-1	5-1-1	5-0-2
MONMOUTH COLLEGE	2/1/14	67-53	w	0-0-1	18-10-2	0-0-0	10-6-3	20-4-2	5-2-0	0-0-0
ST. NORBERT COLLEGE	2/5/14	69-79	L	DNP	9-4-1	DNP	14-4-4	15-6-1	3-0-2	12-1-2
at Illinois College	2/8/14	82-79	w	0-0-0	20-5-4	DNP	6-4-6	9-2-2	0-1-1	5-3-1
at Beloit College	2/12/14	97-83	w	DNP	10-5-4	DNP	10-5-8	21-4-5	3-0-1	3-0-0
CORNELL COLLEGE	2/15/14	77-68	w	4-0-3	14-7-2	0-0-0	0-0-0	27-12-3	5-2-2	0-0-2
LAKE FOREST COLLEGE	2/19/14	84-76	w	0-0-0	18-7-3	0-0-0	DNP	12-5-6	2-1-0	3-0-0
at Grinnell College	2/22/14	111-122	L	0-3-2	18-2-2	2-0-0	DNP	26-8-4	24-6-2	3-1-0

Opponent	Date	Score		20	21	22	23	24	25	30
				DEWOLFE,DA	CULLIAN,SH	NELSON,CHA	WINSLOW,PE	SIEBERT,CH	SONNLEITNE	MILLER,TRO
WISCONSIN LUTHERAN C	11/15/13	92-77	w	11-4-1	0-0-0	2-1-0	DNP	30-3-4	0-4-1	0-0-2
at UW-Stevens Point	11/16/13	73-99	L	10-5-0	0-0-0	0-0-0	DNP	15-7-3	0-0-0	5-1-0
ELMHURST COLLEGE	11/23/13	81-96	L	2-2-1	2-0-0	2-2-0	DNP	26-5-4	12-5-2	3-0-0
CARROLL UNIVERSITY	12/4/13	76-67	w	DNP	DNP	2-7-2	DNP	12-4-4	0-1-0	DNP
at Cornell College	12/11/13	69-75	L	DNP	DNP	11-7-0	DNP	13-8-3	0-0-0	0-1-0
at Knox College	12/14/13	92-47	w	DNP	2-1-0	7-2-0	1-1-1	25-3-4	9-4-0	0-1-1
ILLINOIS COLLEGE	12/16/13	88-64	w	DNP	0-1-0	6-5-0	2-1-0	22-1-1	4-2-1	0-3-1
vs Mount Saint Vincent	12/18/13	82-59	w	DNP	0-0-0	4-6-1	2-0-0	10-7-2	7-4-1	1-1-0
vs UW-Whitewater	12/20/13	56-73	L	DNP	DNP	0-3-0	DNP	14-1-0	0-2-0	0-0-0
at St. Norbert College	1/4/14	68-81	L	DNP	DNP	0-3-1	DNP	14-1-1	2-3-0	DNP
RIPON COLLEGE	1/11/14	66-69	L	DNP	DNP	2-3-0	DNP	24-5-2	2-0-0	DNP
at Lake Forest College	1/14/14	76-83	L	DNP	DNP	5-2-0	DNP	8-4-3	0-1-0	DNP
GRINNELL COLLEGE	1/18/14	111-94	w	DNP	DNP	14-3-0	DNP	23-11-1	0-1-1	0-1-1
at Ripon College	1/22/14	81-95	L	DNP	DNP	4-2-0	DNP	18-4-3	19-4-1	DNP
KNOX COLLEGE	1/25/14	88-73	w	DNP	0-0-0	6-5-2	DNP	22-3-3	0-3-0	3-0-0
at Carroll University	1/28/14	78-84	L	DNP	DNP	2-2-0	DNP	19-5-2	21-5-0	DNP
MONMOUTH COLLEGE	2/1/14	67-53	w	DNP	0-0-0	1-3-0	0-0-0	9-1-4	4-3-1	0-1-1
ST. NORBERT COLLEGE	2/5/14	69-79	L	DNP	DNP	5-6-1	DNP	5-2-2	6-1-4	DNP
at Illinois College	2/8/14	82-79	w	DNP	DNP	8-13-1	DNP	26-4-3	8-2-0	0-0-0
at Beloit College	2/12/14	97-83	w	DNP	DNP	12-2-0	DNP	28-3-2	10-2-0	DNP
CORNELL COLLEGE	2/15/14	77-68	w	DNP	0-0-0	2-6-0	0-0-0	10-2-3	7-2-0	5-1-0
LAKE FOREST COLLEGE	2/19/14	84-76	w	DNP	0-0-0	12-3-0	0-0-0	22-4-5	10-1-1	5-1-1
at Grinnell College	2/22/14	111-122	L	DNP	DNP	10-13-1	DNP	17-5-8	3-1-1	3-1-2

**2013-14 Lawrence Basketball**  
**Lawrence University Points-Rebounds-Assists (as of Nov 12, 2014)**  
**All games**

Opponent	Date	Score		32	33
				BRESEMAN,A	BORRESEN,A
WISCONSIN LUTHERAN C	11/15/13	92-77	w	0-0-0	6-1-0
at UW-Stevens Point	11/16/13	73-99	L	DNP	3-3-0
ELMHURST COLLEGE	11/23/13	81-96	L	DNP	3-1-0
CARROLL UNIVERSITY	12/4/13	76-67	w	DNP	0-0-0
at Cornell College	12/11/13	69-75	L	DNP	0-1-0
at Knox College	12/14/13	92-47	w	6-0-0	0-2-0
ILLINOIS COLLEGE	12/16/13	88-64	w	0-0-1	2-0-1
vs Mount Saint Vincent	12/18/13	82-59	w	0-0-0	0-0-0
vs UW-Whitewater	12/20/13	56-73	L	DNP	0-2-0
at St. Norbert College	1/4/14	68-81	L	DNP	DNP
RIPON COLLEGE	1/11/14	66-69	L	DNP	0-1-1
at Lake Forest College	1/14/14	76-83	L	DNP	DNP
GRINNELL COLLEGE	1/18/14	111-94	w	0-0-1	0-1-0
at Ripon College	1/22/14	81-95	L	DNP	DNP
KNOX COLLEGE	1/25/14	88-73	w	DNP	0-0-1
at Carroll University	1/28/14	78-84	L	DNP	DNP
MONMOUTH COLLEGE	2/1/14	67-53	w	0-0-0	0-0-0
ST. NORBERT COLLEGE	2/5/14	69-79	L	DNP	DNP
at Illinois College	2/8/14	82-79	w	DNP	0-0-0
at Beloit College	2/12/14	97-83	w	DNP	DNP
CORNELL COLLEGE	2/15/14	77-68	w	0-1-0	3-1-0
LAKE FOREST COLLEGE	2/19/14	84-76	w	0-0-0	0-0-0
at Grinnell College	2/22/14	111-122	L	DNP	5-2-1