



Lawrence University at Dominican University



Saturday, November 14, 2015

River Forest, Illinois

2015-16 LAWRENCE SCHEDULE

| Date | Opponent | Time/Res. |
|--------------|---------------------------|----------------|
| 11/14 | at Dominican (Ill.) | 7:00 pm |
| 11/18 | Wisconsin Lutheran | 7:00 pm |
| 11/21 | at Ripon | 1:00 pm |
| 11/25 | Lake Forest | 3:00 pm |
| 12/2 | at Beloit | 5:00 pm |
| 12/5 | Illinois College | 1:00 pm |
| 12/12 | at UW-Stevens Point | 3:00 pm |
| 12/19-20 | Puerto Rico Classic | |
| 12/19 | vs. Randolph | Noon |
| 12/20 | vs. Bard | Noon |
| 1/2 | Grinnell | 1:00 pm |
| 1/6 | at St. Norbert | 5:30 pm |
| 1/9 | Monmouth | 1:00 pm |
| 1/12 | at Carroll | 5:00 pm |
| 1/16 | at Cornell | 1:00 pm |
| 1/20 | Ripon | 5:30 pm |
| 1/23 | Knox | 2:00 pm |
| 1/26 | at Lake Forest | 5:00 pm |
| 1/30 | at Knox | 1:00 pm |
| 2/3 | St. Norbert | 5:30 pm |
| 2/6 | at Illinois College | 1:00 pm |
| 2/9 | Beloit | 5:30 pm |
| 2/17 | Carroll | 5:00 pm |
| 2/20 | at Monmouth | 1:00 pm |
| 2/26-27 | MWC Tournament | TBA |

Home games in bold

PROBABLE STARTERS



Lawrence

| | | | |
|---------|-----------------|-----|-----|
| Forward | Mitch Willer | Jr. | 6-7 |
| Forward | Peter Winslow | Jr. | 6-3 |
| Guard | Jeremy Stephani | So. | 6-0 |
| Guard | Jamie Nikitas | Sr. | 6-0 |
| Guard | Troy Miller | Sr. | 6-0 |



Dominican

| | | | |
|---------|---------------|-----|-----|
| Forward | Tim Robertson | So. | 6-3 |
| Forward | Jolly Grewall | Sr. | 6-4 |
| Guard | Mike Bobek | Sr. | 6-1 |
| Guard | Josh Mayberry | Jr. | 6-3 |
| Guard | Quinn Pokora | Jr. | 6-1 |

SCHEDULE

►Lawrence travels south to River Forest, Ill., to take on Dominican in a non-conference game. Tip-off is set for 7 p.m. at Igini Sports Forum.

VIDEO WEBCAST

►The game features a free video webcast at: <http://dustars.com/schedule.aspx?path=mbball>. Dick Knapinski and Anthony Totoraitis are on the call for Lawrence home games. A link for Lawrence webcasts is on the Lawrence basketball page.

THE COACHES

►Joel DePagter (Lawrence 1998), the 1997 Midwest Conference Player of the Year and 2009 Midwest Conference Coach of the Year, is in his ninth season at Lawrence and has a record of 107-81 (.569).

►Mark White (Macalester 1984) is in his 20th season at Dominican. He coached the team in two stints, from 1995-2000 and again from 2002 to the present.

THE SERIES

►The series goes back to when Dominican was still known as Rosary College back in the 1960s. Dominican holds a 3-2 edge in the series that was first contested during the 1969-70 season. The teams played in two consecutive seasons but didn't meet again until the 1998-99 campaign. Lawrence got its first win the series in 2007-08, and the Vikings posted a 66-49 victory in the season opener a year ago.

LAST MEETING

Troy Miller enjoyed a stellar shooting night to lead Lawrence to a 66-49 non-conference victory over Dominican (Ill.) in the season opener at Alexander Gymnasium on Nov. 15, 2014.

Miller went 7-for-11 from 3-point range on his way to a career-high 21 points for the Vikings. Miller, who had never scored in double digits in a game, scored 15 points in the second half as the Vikings pulled away.

Jamie Nikitas had a double-double for the Vikings with 16 points and a game-high 13 rebounds. Peter Winslow, making his first career start for

Lawrence, scored 11 points and tied for game-high honors with four assists. Trace Sonnleitner added seven points, four assists, four rebounds and three blocks for the Vikings.

Freshman Jeremy Stephani played 28 minutes and scored nine points and grabbed six rebounds in his Lawrence debut. The Vikings played without star swingman Ryan DePouw, who missed the game due to injury.

Tim Robertson paced Dominican with 14 points, and Josh Mayberry added nine.

Lawrence built an early 13-point lead, but the Stars finished the first half on a 14-5 run to trim the margin to 25-21 at the break.

Miller then hit four 3-pointers as part of a 22-8 run over the first nine minutes of the second half that pushed Lawrence's lead to 18 points. The Vikings pulled out to a 47-29 advantage and would build that lead to as many as 23 points.

Dominican never got closer than 13 points over the final 10 minutes of the game.

VIKINGS UPDATE

►The Vikings open their season on the road for the first time since the 2011-12 season when Lawrence dropped an 80-58 decision at UW-Stevens Point.



►Lawrence is 4-4 in season openers under head coach Joel DePagter, including 2-0 against Dominican (Ill.).

►Lawrence has an overall record of 65-47-1 in season openers dating back to 1896.

►Lawrence returns a pair of starters from last year's squad, led by All-Midwest Conference guard Jamie Nikitas (Glenview, Ill./Glenbrook South). Nikitas is coming off a stellar season in which he led the team in scoring, rebounding, assists and steals. Nikitas averaged 15.0 points, 7.7 rebounds,



Final 2014-15 MWC Standings

| | MWC | | Overall | |
|------------------|-----|----|---------|----|
| | W | L | W | L |
| St. Norbert* | 18 | 0 | 24 | 2 |
| Monmouth* | 13 | 5 | 16 | 8 |
| Ripon* | 12 | 6 | 15 | 9 |
| Grinnell* | 12 | 6 | 15 | 10 |
| Lake Forest | 9 | 9 | 10 | 12 |
| Lawrence | 8 | 10 | 10 | 13 |
| Beloit | 7 | 11 | 8 | 15 |
| Cornell | 7 | 11 | 8 | 15 |
| Carroll | 6 | 12 | 9 | 14 |
| Knox | 4 | 14 | 6 | 17 |
| Illinois College | 3 | 15 | 4 | 19 |

*Clinched MWC Tournament berth

Game Friday

UW-Whitewater at Ripon

Games Saturday

Lawrence at Dominican (Ill.)

UW-Platteville at Lake Forest

Silver Lake at Grinnell

Beloit at MSOE

Game Sunday

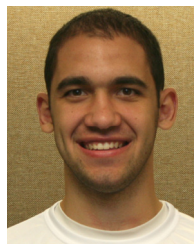
Crossroads at Grinnell

3.0 assists and 2.1 steals per contest. The other returning starter is senior guard Troy Miller (Lake In The Hills, Ill./Huntley). Miller started every game last season and averaged 6.5 points and 3.0 rebounds per game while shooting 40.5 percent from the floor.

►Nikitas is on track to become Lawrence's next 1,000-point



Troy Miller



Jamie Nikitas

DEPAGTER'S RECORD

Lawrence head coach Joel DePagter is in his ninth season as the Vikings' coach. He is the only person in Midwest Conference history to be named both Player of the Year (1997) and Coach of the Year (2009).



| Overall Record | 107-81 |
|----------------|--------|
| Home | 59-31 |
| Away | 45-42 |
| Neutral | 3-8 |

| Midwest Conference Record | 83-55 |
|---------------------------|-------|
| Home | 44-25 |
| Away | 39-30 |

| Nonconference Record | 24-26 |
|----------------------|-------|
| Home | 11-5 |
| Away | 10-13 |
| Neutral | 3-8 |

DePagter vs. the MWC

| | |
|------------------|------|
| Beloit | 11-3 |
| Carroll | 10-8 |
| Cornell | 4-3 |
| Grinnell | 5-9 |
| Illinois College | 13-2 |
| Knox | 14-1 |
| Lake Forest | 8-6 |
| Monmouth | 12-2 |
| Ripon | 6-10 |
| St. Norbert | 5-12 |

DePagter vs. Nonconference Opponents

| | |
|--------------------------|-----|
| Ashford | 0-1 |
| Cal Lutheran | 0-1 |
| Caltech | 1-0 |
| Coe | 1-1 |
| Concordia (Ill.) | 1-0 |
| Dominican (Ill.) | 2-0 |
| Elmhurst | 0-2 |
| Florida College | 1-0 |
| Grand View | 0-1 |
| Johnson and Wales (Fla.) | 1-0 |
| Lakeland | 1-0 |
| Manchester | 0-1 |
| Marian | 2-2 |
| Mount St. Vincent | 1-0 |
| Nova Southeastern | 1-0 |
| St. Mary's (Md.) | 0-1 |
| Southeastern (Fla.) | 0-1 |
| Trinity (Fla.) | 1-0 |
| Viterbo | 0-1 |
| Washington (Mo.) | 0-1 |
| Wheaton (Ill.) | 0-1 |
| Wisconsin Lutheran | 4-0 |
| UW-Oshkosh | 1-3 |
| UW-Stevens Point | 1-7 |
| UW-Whitewater | 0-1 |

scorer. He enters the season with 829 points and is seeking to become the 23rd player in school history to score 1,000 points. This would be the third consecutive season a player has joined the 1,000-point club. Ryan DePouw did it last season and finished with 1,028 points, and Chris Siebert did it in 2014 and finished with 1,360.

►On a sad note, one of Lawrence's 1,000-point scorers, Rob Cohen, passed away this summer. Cohen, a 1980 Lawrence graduate, lost his battle with cancer. He was 57. Cohen's daughter, Arianna, is a current member of Lawrence's volleyball and basketball teams.

►Lawrence will be without a key player from last year, senior forward Trace Sonnleitner (Appleton, Wis./North). He chose not to play this season after starting all but one game a season ago and averaging 12.4 points, 3.6 rebounds and 1.0 blocks per game.

►In the preseason poll of Midwest Conference coaches, Lawrence was picked to finish seventh. St. Norbert was the narrow choice to win the league for a fourth consecutive season.

►Lawrence finished sixth in the Midwest Conference in scoring offense at 69.8 points per game a season ago, and the Vikings shot 45.3 percent from the floor, good for eighth in the league.

►The Vikings were fourth in the conference in scoring defense at 70.0 points per contest. Lawrence was fourth in field goal percentage defense at 44.8 percent.

SCOUTING DOMINICAN

►Dominican endured a difficult 2014-15 season that saw the Stars finish with a 2-23 record, including a 2-18 mark in league play.



Lawrence University Basketball Facts

| | |
|-----------------------------|--|
| Location | Appleton, Wis. |
| Founded | 1847 |
| Enrollment | 1,450 |
| President | Mark Burstein |
| Affiliation | NCAA Division III |
| Conference | Midwest Conference |
| Nickname | Vikings |
| School Colors | Blue and White |
| Home Arena | Alexander Gymnasium (1929, capacity 1,100) |
| Director of Athletics | Mike Szkodzinski |
| First season of basketball | 1896 |
| Seasons of basketball | 113 |
| All-time record | 962-1060-1 (.476) |
| Midwest Conference titles | 8 1924-25, 1942-43, 1996-97, 2003-04, 2004-05, 2005-06, 2007-08, 2008-09 |
| MWC Tournament titles | 6 1997, 2004, 2005, 2006, 2008, 2009 |
| NCAA Tournament appearances | 6 1997, 2004, 2005, 2006, 2008, 2009 |

►The Stars were chosen to finish 10th in the 11-team Northern Athletics Collegiate Conference. Concordia (Wis.) was picked to win the league.

►Dominican returns four starters from a season ago, including the top three scorers. Guard Josh Mayberry averaged 14.2 points while shooting 38.3 percent from the floor. He also averaged a team-best 3.2 assists and 1.7 steals per game.

►Sophomore Tim Robertson and junior Quinn Pokora both averaged in double figures last season. Robertson was at 14.0 points and led the team at 6.1 rebounds per game. Pokora averaged 10.7 points and 1.8 rebounds per game. Mike Bobek is the other returning starter, and he averaged 2.4 points and 2.5 rebounds per game a season ago.

►Robertson was named the Central Region Freshman of the Year by D3hoops.com after last season.

1,000 POINT CLUB

| Player | Points | Years |
|-----------------|--------|-----------|
| Chris Braier | 1,565 | 2002-06 |
| Joel Dillingham | 1,554 | 1989-93 |
| Ryan Kroeger | 1,537 | 2005-09 |
| Chris Siebert | 1,360 | 2010-14 |
| Doug Fyfe | 1,342 | 1972-76 |
| Adam LaVoy | 1,273 | 1997-2001 |
| Joel Ungrodt | 1,247 | 1961-64 |
| Matt Miota | 1,246 | 1987-91 |
| Joel DePagter | 1,243 | 1995-98 |
| Ben Zagorski | 1,175 | 1994-98 |
| Mike Fogel | 1,175 | 1975-79 |
| Reggie Geans | 1,160 | 1985-89 |
| John Dekker | 1,117 | 2006-10 |
| Shawn Koerner | 1,115 | 1985-89 |
| Richard Schultz | 1,088 | 1964-67 |
| Tom Steinmetz | 1,073 | 1963-66 |
| Jason Holinbeck | 1,051 | 2001-05 |
| Strat Warden | 1,042 | 1969-72 |
| Bob Townsend | 1,031 | 1966-69 |
| Jim Rasmussen | 1,030 | 1958-61 |
| Ryan DePouw | 1,028 | 2011-15 |
| Rob Cohen | 1,005 | 1976-80 |

2014-15 Lawrence Basketball
Lawrence University Combined Team Statistics (as of Nov 12, 2015)
All games

| RECORD: | OVERALL | HOME | AWAY | NEUTRAL |
|----------------|----------------|-------------|-------------|----------------|
| ALL GAMES | 10-13 | 5-7 | 5-6 | 0-0 |
| CONFERENCE | 8-10 | 4-5 | 4-5 | 0-0 |
| NON-CONFERENCE | 2-3 | 1-2 | 1-1 | 0-0 |

| # | Player | gp-gs | min | avg | Total | | 3-Point | | F-Throw | | Rebounds | | | | pf | dq | a | to | blk | stl | pts | avg | | | | | | | | |
|----------------|-------------------|-------|------|------|----------|-------|---------|------|---------|-------|----------|-----|-----|------|-----|----|-----|-----|-----|-----|------|------|--|--|---|--|--|--|--|--|
| | | | | | fg-fga | fg% | 3fg-fga | 3fg% | ft-fa | ft% | off | def | tot | avg | | | | | | | | | | | | | | | | |
| 03 | Jamie Nikitas | 22-22 | 724 | 32.9 | 130-282 | .461 | 24-85 | .282 | 45-71 | .634 | 33 | 136 | 169 | 7.7 | 50 | 0 | 67 | 50 | 0 | 46 | 329 | 15.0 | | | | | | | | |
| 11 | Ryan DePouw | 21-21 | 702 | 33.4 | 83-194 | .428 | 31-93 | .333 | 78-102 | .765 | 25 | 79 | 104 | 5.0 | 41 | 1 | 59 | 59 | 3 | 14 | 275 | 13.1 | | | | | | | | |
| 25 | Trace Sonnleitner | 23-22 | 631 | 27.4 | 105-223 | .471 | 41-103 | .398 | 35-41 | .854 | 13 | 69 | 82 | 3.6 | 43 | 1 | 31 | 38 | 24 | 10 | 286 | 12.4 | | | | | | | | |
| 12 | Jeremy Stephani | 23-1 | 520 | 22.6 | 67-159 | .421 | 42-101 | .416 | 19-35 | .543 | 15 | 46 | 61 | 2.7 | 28 | 1 | 48 | 27 | 1 | 21 | 195 | 8.5 | | | | | | | | |
| 30 | Troy Miller | 23-23 | 608 | 26.4 | 51-126 | .405 | 35-94 | .372 | 13-15 | .867 | 22 | 46 | 68 | 3.0 | 37 | 1 | 35 | 20 | 0 | 18 | 150 | 6.5 | | | | | | | | |
| 04 | Mitch Willer | 23-0 | 301 | 13.1 | 55-91 | .604 | 0-0 | .000 | 18-25 | .720 | 9 | 41 | 50 | 2.2 | 53 | 2 | 9 | 15 | 16 | 3 | 128 | 5.6 | | | | | | | | |
| 33 | Andrew Borresen | 23-23 | 519 | 22.6 | 38-90 | .422 | 23-52 | .442 | 1-5 | .200 | 9 | 49 | 58 | 2.5 | 41 | 1 | 38 | 14 | 6 | 11 | 100 | 4.3 | | | | | | | | |
| 23 | Peter Winslow | 22-2 | 280 | 12.7 | 16-42 | .381 | 6-19 | .316 | 13-19 | .684 | 16 | 25 | 41 | 1.9 | 39 | 1 | 24 | 17 | 9 | 5 | 51 | 2.3 | | | | | | | | |
| 24 | Connor Weas | 23-0 | 211 | 9.2 | 18-38 | .474 | 10-22 | .455 | 7-9 | .778 | 7 | 15 | 22 | 1.0 | 18 | 0 | 13 | 9 | 0 | 4 | 53 | 2.3 | | | | | | | | |
| 21 | Shane Cullian | 13-1 | 62 | 4.8 | 9-14 | .643 | 0-1 | .000 | 2-6 | .333 | 6 | 5 | 11 | 0.8 | 9 | 0 | 2 | 0 | 0 | 1 | 20 | 1.5 | | | | | | | | |
| 10 | Eric Weiss | 7-0 | 23 | 3.3 | 2-4 | .500 | 0-2 | .000 | 2-2 | 1.000 | 0 | 1 | 1 | 0.1 | 1 | 0 | 5 | 5 | 1 | 0 | 6 | 0.9 | | | | | | | | |
| 05 | Evan McLaughlin | 9-0 | 28 | 3.1 | 1-1 | 1.000 | 0-0 | .000 | 4-4 | 1.000 | 1 | 2 | 3 | 0.3 | 5 | 0 | 1 | 3 | 0 | 0 | 6 | 0.7 | | | | | | | | |
| 32 | Ben Peterson | 10-0 | 23 | 2.3 | 3-9 | .333 | 0-5 | .000 | 0-2 | .000 | 3 | 6 | 9 | 0.9 | 2 | 0 | 0 | 1 | 3 | 0 | 6 | 0.6 | | | | | | | | |
| 00 | Kalind Nash | 6-0 | 18 | 3.0 | 0-2 | .000 | 0-0 | .000 | 0-0 | .000 | 1 | 0 | 1 | 0.2 | 2 | 0 | 2 | 4 | 0 | 0 | 0 | 0.0 | | | | | | | | |
| Team | | | | | | | | | | | 23 | 29 | 52 | | | | | | | | | | | | 5 | | | | | |
| Total..... | | 23 | 4650 | | 578-1275 | .453 | 212-577 | .367 | 237-336 | .705 | 183 | 549 | 732 | 31.8 | 369 | 8 | 334 | 267 | 63 | 133 | 1605 | 69.8 | | | | | | | | |
| Opponents..... | | 23 | 4650 | | 586-1307 | .448 | 166-462 | .359 | 273-402 | .679 | 216 | 561 | 777 | 33.8 | 356 | - | 267 | 241 | 55 | 151 | 1611 | 70.0 | | | | | | | | |

| TEAM STATISTICS | LU | OPP | Date | Opponent | Score | Att. | |
|------------------------|-----------|------------|-------------|--------------------------|--------------|-------------|------|
| SCORING | 1605 | 1611 | 11/15/14 | DOMINICAN (ILL.) | w | 66-49 | 568 |
| Points per game | 69.8 | 70.0 | 11/18/14 | at Wisconsin Lutheran | w | 68-65 | 229 |
| Scoring margin | -0.3 | - | * 11/22/14 | RIPON COLLEGE | Lot | 79-89 | 867 |
| FIELD GOALS-ATT | 578-1275 | 586-1307 | * 12/03/14 | BELOIT COLLEGE | Wot | 64-53 | 679 |
| Field goal pct | .453 | .448 | * 12/06/14 | at Illinois College | w | 89-57 | 310 |
| 3 POINT FG-ATT | 212-577 | 166-462 | * 12/09/14 | at Lake Forest College | L | 70-79 | 463 |
| 3-point FG pct | .367 | .359 | 12/13/14 | UW-STEVENS POINT | L | 49-60 | 912 |
| 3-pt FG made per game | 9.2 | 7.2 | 12/17/14 | at Grand View University | L | 63-71 | 212 |
| FREE THROWS-ATT | 237-336 | 273-402 | 12/18/14 | VITERBO UNIVERSITY | L | 55-74 | 231 |
| Free throw pct | .705 | .679 | * 01/03/15 | at Grinnell College | L | 116-126 | 1002 |
| F-Throws made per game | 10.3 | 11.9 | * 01/07/15 | ST. NORBERT COLLEGE | L | 72-81 | 784 |
| REBOUNDS | 732 | 777 | * 01/10/15 | at Monmouth College | L | 57-74 | 150 |
| Rebounds per game | 31.8 | 33.8 | * 01/13/15 | CARROLL UNIVERSITY | w | 69-62 | 567 |
| Rebounding margin | -2.0 | - | * 01/17/15 | CORNELL COLLEGE | L | 61-72 | 878 |
| ASSISTS | 334 | 267 | * 01/21/15 | at Ripon College | L | 63-72 | 455 |
| Assists per game | 14.5 | 11.6 | * 01/24/15 | at Knox College | w | 76-54 | 455 |
| TURNOVERS | 267 | 241 | * 01/27/15 | LAKE FOREST COLLEGE | L | 60-78 | 452 |
| Turnovers per game | 11.6 | 10.5 | * 01/31/15 | KNOX COLLEGE | w | 76-60 | 681 |
| Turnover margin | -1.1 | - | * 02/04/15 | at St. Norbert College | L | 63-81 | 602 |
| Assist/turnover ratio | 1.3 | 1.1 | * 02/07/15 | ILLINOIS COLLEGE | w | 100-67 | 681 |
| STEALS | 133 | 151 | * 02/10/15 | at Beloit College | w | 69-65 | 200 |
| Steals per game | 5.8 | 6.6 | * 02/18/15 | at Carroll University | w | 61-49 | 312 |
| BLOCKS | 63 | 55 | * 02/21/15 | MONMOUTH COLLEGE | L | 59-73 | 741 |
| Blocks per game | 2.7 | 2.4 | | | | | |
| ATTENDANCE | 8041 | 4390 | | | | | |
| Home games-Avg/Game | 12-670 | 11-399 | | | | | |
| Neutral site-Avg/Game | - | 0-0 | | | | | |

* - Conference game

| Score by Periods | 1st | 2nd | OT | Totals |
|-------------------------|------------|------------|-----------|---------------|
| Lawrence University | 792 | 794 | 19 | 1605 |
| Opponents | 759 | 834 | 18 | 1611 |

2014-15 Lawrence Basketball
Lawrence University Points-Rebounds-Assists (as of Nov 12, 2015)
All games

| Opponent | Date | Score | | 00 | 03 | 04 | 05 | 10 | 11 | 12 |
|-------------------------|----------|---------|---|------------|------------|------------|------------|------------|------------|------------|
| | | | | NASH,KALIN | NIKITAS,JA | WILLER,MIT | MCLAUGHLIN | WEISS,ERIC | DEPOUW,RYA | STEPHANI,J |
| DOMINICAN (ILL.) | 11/15/14 | 66-49 | w | 0-0-0 | 16-13-3 | 0-1-0 | 0-0-0 | 0-0-0 | DNP | 9-6-1 |
| at Wisconsin Lutheran | 11/18/14 | 68-65 | w | DNP | 23-11-4 | 2-2-0 | DNP | DNP | DNP | 5-2-0 |
| RIPON COLLEGE | 11/22/14 | 79-89 | L | DNP | 28-11-3 | 2-3-0 | DNP | DNP | 17-5-1 | 0-2-4 |
| BELOIT COLLEGE | 12/03/14 | 64-53 | w | DNP | 16-14-4 | 0-1-0 | DNP | DNP | 19-4-1 | 6-3-1 |
| at Illinois College | 12/06/14 | 89-57 | w | 0-0-1 | 14-15-3 | 0-1-0 | 0-0-0 | 0-1-1 | 19-8-7 | 8-2-1 |
| at Lake Forest College | 12/09/14 | 70-79 | L | DNP | 21-7-1 | 2-1-0 | DNP | DNP | 18-6-5 | 9-5-0 |
| UW-STEVENS POINT | 12/13/14 | 49-60 | L | DNP | 14-7-2 | 7-4-1 | DNP | DNP | 8-2-3 | 9-0-2 |
| vs Grand View Universit | 12/17/14 | 63-71 | L | DNP | 8-13-4 | 4-2-0 | DNP | DNP | 6-5-2 | 18-2-2 |
| vs Viterbo University | 12/18/14 | 55-74 | L | 0-0-0 | DNP | 2-0-0 | 2-0-0 | 0-0-1 | 7-6-1 | 12-4-4 |
| at Grinnell College | 01/03/15 | 116-126 | L | DNP | 19-8-4 | 3-1-0 | DNP | DNP | 18-8-7 | 22-4-4 |
| ST. NORBERT COLLEGE | 01/07/15 | 72-81 | L | DNP | 19-4-2 | 2-0-1 | DNP | DNP | 10-3-5 | 3-0-0 |
| at Monmouth College | 01/10/15 | 57-74 | L | DNP | 5-6-1 | 2-1-1 | DNP | DNP | 11-4-0 | 4-2-2 |
| CARROLL UNIVERSITY | 01/13/15 | 69-62 | w | DNP | 18-7-3 | 6-5-0 | DNP | DNP | 10-4-2 | 15-4-3 |
| CORNELL COLLEGE | 01/17/15 | 61-72 | L | DNP | 14-3-1 | 12-0-0 | DNP | DNP | 16-4-4 | 3-2-4 |
| at Ripon College | 01/21/15 | 63-72 | L | DNP | 6-7-3 | 8-3-1 | DNP | DNP | 16-5-3 | 7-1-1 |
| at Knox College | 01/24/15 | 76-54 | w | 0-0-0 | 8-6-8 | 10-2-2 | 2-2-0 | 2-0-1 | 8-3-0 | 17-3-1 |
| LAKE FOREST COLLEGE | 01/27/15 | 60-78 | L | DNP | 5-4-3 | 13-3-1 | 2-0-0 | DNP | 9-2-3 | 13-0-1 |
| KNOX COLLEGE | 01/31/15 | 76-60 | w | 0-1-0 | 9-6-0 | 8-4-0 | 0-0-0 | 0-0-1 | 10-8-5 | 10-5-1 |
| at St. Norbert College | 02/04/15 | 63-81 | L | DNP | 12-3-4 | 12-3-1 | 0-0-0 | DNP | 20-7-1 | 7-2-1 |
| ILLINOIS COLLEGE | 02/07/15 | 100-67 | w | 0-0-1 | 16-6-4 | 12-4-1 | 0-1-1 | 4-0-1 | 26-5-3 | 2-3-4 |
| at Beloit College | 02/10/15 | 69-65 | w | DNP | 18-4-5 | 6-5-0 | DNP | DNP | 13-9-3 | 5-4-3 |
| at Carroll University | 02/18/15 | 61-49 | w | DNP | 26-8-4 | 8-3-0 | 0-0-0 | 0-0-0 | 4-3-0 | 6-3-6 |
| MONMOUTH COLLEGE | 02/21/15 | 59-73 | L | DNP | 14-6-1 | 7-1-0 | DNP | DNP | 10-3-3 | 5-2-2 |

| Opponent | Date | Score | | 21 | 23 | 24 | 25 | 30 | 32 | 33 |
|-------------------------|----------|---------|---|------------|------------|------------|------------|------------|------------|------------|
| | | | | CULLIAN,SH | WINSLOW,PE | WEAS,CONNO | SONNLEITNE | MILLER,TRO | PETERSON,B | BORRESEN,A |
| DOMINICAN (ILL.) | 11/15/14 | 66-49 | w | 0-1-0 | 11-4-4 | 0-1-0 | 7-4-4 | 21-3-2 | 0-1-0 | 2-3-3 |
| at Wisconsin Lutheran | 11/18/14 | 68-65 | w | 0-1-0 | 0-5-2 | 0-0-0 | 22-4-3 | 13-3-2 | DNP | 3-6-1 |
| RIPON COLLEGE | 11/22/14 | 79-89 | L | DNP | 0-4-0 | 0-0-0 | 23-6-1 | 9-2-3 | DNP | 0-3-3 |
| BELOIT COLLEGE | 12/03/14 | 64-53 | w | DNP | 1-2-1 | 2-3-0 | 10-7-2 | 10-1-2 | DNP | 0-2-1 |
| at Illinois College | 12/06/14 | 89-57 | w | 4-1-0 | 2-1-2 | 0-5-1 | 18-6-1 | 13-2-1 | 2-2-0 | 9-3-2 |
| at Lake Forest College | 12/09/14 | 70-79 | L | DNP | 0-2-2 | 1-0-0 | 8-5-1 | 8-2-0 | DNP | 3-3-0 |
| UW-STEVENS POINT | 12/13/14 | 49-60 | L | DNP | 3-3-1 | 3-0-0 | 5-2-1 | 0-4-0 | DNP | 0-1-0 |
| vs Grand View Universit | 12/17/14 | 63-71 | L | DNP | 1-0-2 | 6-1-0 | 12-4-3 | 5-1-0 | DNP | 3-3-2 |
| vs Viterbo University | 12/18/14 | 55-74 | L | 0-0-0 | 1-1-0 | 3-0-1 | 14-1-2 | 7-4-2 | 0-0-0 | 7-8-1 |
| at Grinnell College | 01/03/15 | 116-126 | L | DNP | 6-3-3 | 5-0-0 | 23-3-2 | 9-6-3 | DNP | 11-1-2 |
| ST. NORBERT COLLEGE | 01/07/15 | 72-81 | L | DNP | 2-1-0 | 0-1-0 | 21-3-1 | 6-2-3 | DNP | 9-1-2 |
| at Monmouth College | 01/10/15 | 57-74 | L | DNP | 1-3-0 | 10-2-0 | 12-5-2 | 6-4-1 | DNP | 6-0-2 |
| CARROLL UNIVERSITY | 01/13/15 | 69-62 | w | DNP | 0-0-2 | 3-1-1 | 11-5-0 | 0-2-5 | DNP | 6-2-1 |
| CORNELL COLLEGE | 01/17/15 | 61-72 | L | DNP | 0-0-1 | 0-1-1 | 11-2-2 | 2-5-0 | DNP | 3-5-0 |
| at Ripon College | 01/21/15 | 63-72 | L | 0-1-0 | 10-4-1 | 0-0-0 | 7-2-1 | 4-3-1 | DNP | 5-2-1 |
| at Knox College | 01/24/15 | 76-54 | w | 2-0-0 | 2-2-1 | 3-3-1 | 14-4-1 | 2-3-2 | 0-0-0 | 6-3-3 |
| LAKE FOREST COLLEGE | 01/27/15 | 60-78 | L | 4-3-1 | DNP | 0-1-1 | 5-2-1 | 3-2-0 | 0-1-0 | 6-4-1 |
| KNOX COLLEGE | 01/31/15 | 76-60 | w | 2-0-0 | 0-0-0 | 0-0-0 | 19-3-1 | 13-7-1 | 0-1-0 | 5-1-4 |
| at St. Norbert College | 02/04/15 | 63-81 | L | 2-1-0 | 2-0-0 | 0-1-4 | 0-1-0 | 2-0-1 | 0-0-0 | 6-2-1 |
| ILLINOIS COLLEGE | 02/07/15 | 100-67 | w | 2-1-0 | 3-3-1 | 15-2-1 | 12-2-1 | 3-3-0 | 2-4-0 | 3-2-2 |
| at Beloit College | 02/10/15 | 69-65 | w | 0-0-1 | 3-0-1 | 2-0-0 | 17-4-0 | 5-2-0 | DNP | 0-0-3 |
| at Carroll University | 02/18/15 | 61-49 | w | 1-0-0 | 0-2-0 | 0-0-0 | 8-4-0 | 6-1-4 | 2-0-0 | 0-1-3 |
| MONMOUTH COLLEGE | 02/21/15 | 59-73 | L | 3-2-0 | 3-1-0 | 0-0-2 | 7-3-1 | 3-6-2 | 0-0-0 | 7-2-0 |