



Lawrence University (8-10, 9-5 MWC) at Ripon College (14-5, 11-3 MWC),

Wednesday, Feb. 8, 7:30 p.m.

vs. Monmouth College (6-13, 6-8 MWC)

Saturday, Feb. 11, 3 p.m.



2016-17 LAWRENCE SCHEDULE

| Date | Opponent | Time/Res. |
|----------------------------------|-------------------------|----------------------|
| 11/16 | at Wis. Lutheran | L, 76-68 |
| 11/26 | UW-Stevens Point | L, 69-50 |
| 12/2 | at Illinois College | W, 78-70 |
| 12/3 | at Knox | W, 90-65 |
| 12/7 | at St. Norbert | L, 76-45 |
| 12/10 | Grinnell | L, 133-125 OT |
| 12/17 | at MSOE | PPD |
| 12/29-30 Wisconsin Dells Classic | | |
| 12/29 | vs. UW-Whitewater | L, 97-71 |
| 12/30 | vs. UW-Stout | L, 74-71 |
| 1/2 | Knox | W, 68-61 |
| 1/7 | at Monmouth | W, 66-62 |
| 1/13 | Cornell | W, 60-56 |
| 1/14 | Illinois College | W, 63-54 |
| 1/18 | Lake Forest | L, 66-53 |
| 1/21 | at Beloit | W, 62-58 |
| 1/25 | St. Norbert | L, 77-57 |
| 1/28 | at Grinnell | L, 129-91 |
| 1/31 | at Cornell | L, 73-64 |
| 2/4 | Beloit | W, 101-67 |
| 2/8 | at Ripon | 7:30 pm |
| 2/11 | Monmouth | 3:00 pm |
| 2/14 | Ripon | 7:30 pm |
| 2/18 | at Lake Forest | 3:00 pm |
| 2/24-25 | MWC Tournament | TBA |
| Home games in bold | | |

PROBABLE STARTERS



Lawrence

| | | | |
|---------|-----------------|-----|------|
| Forward | Mitch Willer | Sr. | 6-7 |
| Forward | Connor Weas | Sr. | 6-4 |
| Forward | Evan McLaughlin | Jr. | 6-2 |
| Guard | Jeremy Stephani | Jr. | 6-0 |
| Guard | Eric Weiss | Jr. | 5-10 |



Ripon

| | | | |
|---------|-------------------|-----|------|
| Forward | Koy Brecklin | Jr. | 6-7 |
| Guard | Brendan McCoy | Sr. | 6-0 |
| Guard | Isaac Masters | Jr. | 5-11 |
| Guard | Elliot Hoerdemann | Jr. | 6-4 |
| Guard | Ty Sabin | Sr. | 6-2 |



Monmouth

| | | | |
|---------|-----------------|-----|-----|
| Forward | Lamont Mitchell | So. | 6-4 |
| Guard | Will Jones | Jr. | 6-2 |
| Guard | Justin Aluya | Jr. | 6-5 |
| Guard | Paul Engo | Jr. | 6-1 |
| Guard | Austin Holman | Jr. | 6-2 |

SCHEDULE

►The Vikings head into the final two weeks of the season with a pair of important contests. Lawrence travels to Ripon on Wednesday for a 7:30 p.m. game at the Storzer Center. The Vikings then host Monmouth at 3 p.m. Saturday at Alexander Gymnasium.

VIDEO WEBCAST

►All Lawrence home games feature a free video webcast at: <http://portal.stretchinternet.com/lawrence/>. Dick Knapinski is on the call for Lawrence home games. A link for Lawrence webcasts is on the Lawrence basketball page.

THE COACHES

►Joel DePagter (Lawrence 1998), the 1997 Midwest Conference Player of

the Year and 2009 Midwest Conference Coach of the Year, is in his 10th season at Lawrence and has a record of 125-104 (.546).

►Ryan Kane (St. Norbert 1999) is in his fifth season at Ripon and has a record of 62-43 (.590).

►Todd Skrivseth (Coe 1996) is in his sixth season at Monmouth and has a record of 55-80 (.407).

THE SERIES

►In a series that goes all the way back to 1906, Ripon holds a 138-81 edge over the Vikings. Ripon has won eight straight, but prior to that, Lawrence had taken 14 of the previous 21.

►Monmouth holds a 70-41 edge in a series that dates to 1926. Lawrence has put a dent in that deficit under head coach Joel DePagter, whose

teams are 14-3 against the Scots.

LAST GAME

Lawrence's Ben Peterson led a shooting barrage Saturday as the Vikings rolled to a 101-67 Midwest Conference victory over Beloit at Alexander Gymnasium.

Peterson poured in a game-high 25 points as he hit 8-of-10 shots from the floor, including 7-of-8 from 3-point range. Lawrence shot 66.1 percent from the floor, going 41-for-62, including 13-for-22 (59.1 percent) from beyond the arc.

Jeremy Stephani added 19 points for the Vikings, and Evan McLaughlin turned in a stellar all-around game. McLaughlin scored 11 points, pulled down a game-high seven rebounds, handed out a career-high seven assists and picked up three steals.

Sam Noyce paced Beloit with 16 points off the bench, and Tristan Shoup added 12 points.

Lawrence game out of the chute firing and built a 15-point lead eight minutes into the game. The Vikings missed their first two 3-pointers but made four of the next five, two by Stephani and two by Peterson, to lead 21-6.

The Viking pushed the lead to 20 at 34-14 on a 3-pointer by Connor Weas, but Beloit did manage to trim the margin to 47-32 with 38 seconds left in the opening half. Peterson then buried another triple, got fouled and converted the four-point play. Lawrence's Quinn Fisher followed with a driving layup at the buzzer to put Lawrence up 53-32 at the half.

Lawrence went 8-for-13 from beyond the arc in the opening half.

The Vikings quashed any hopes of a Beloit comeback early in the second half. The Bucs had trimmed the lead to 59-38, but Lawrence went on a 13-4 run. A Peterson 3-pointer and four consecutive points from Stephani capped the outburst and gave Lawrence a 72-42 lead with 12:42 left.

Beloit never got closer than 28 the rest of the way, and Lawrence would lead by as many as 36.



MWC Standings

| | MWC | | Overall | |
|------------------|-----|----|---------|----|
| | W | L | W | L |
| St. Norbert | 13 | 1 | 16 | 3 |
| Ripon* | 11 | 3 | 14 | 5 |
| Lake Forest | 10 | 4 | 12 | 7 |
| Lawrence* | 9 | 5 | 8 | 10 |
| Cornell* | 7 | 7 | 8 | 11 |
| Monmouth | 6 | 8 | 6 | 13 |
| Grinnell* | 5 | 9 | 12 | 7 |
| Illinois College | 4 | 10 | 7 | 12 |
| Beloit* | 4 | 10 | 5 | 14 |
| Knox | 1 | 13 | 1 | 16 |

* The MWC records of these schools have been adjusted due to self-imposed forfeiture of games by Grinnell

Games Wednesday

Lawrence at Ripon
Illinois College at Beloit
Knox at Grinnell
St. Norbert at Lake Forest
Monmouth at Cornell

Games Saturday

Monmouth at Lawrence
Beloit at Knox
Ripon at Illinois College
St. Norbert at Grinnell
Cornell at Lake Forest

VIKINGS UPDATE

►The Vikings have moved up to fourth place in the Midwest Conference standings. Lawrence was among four teams that were awarded a conference victory after Grinnell announced a self-imposed penalty that included the forfeiture of four wins.

►With four games remaining, the Vikings now hold a two-game edge over Cornell for the fourth and final Midwest Conference Tournament



DEPAGTER'S RECORD

Joel DePagter is in his 10th season as the Vikings' coach. He is the only person in Midwest Conference history to be named both Player of the Year (1997) and Coach of the Year (2009).



| | |
|-----------------------|---------|
| Overall Record | 125-104 |
| Home | 65-43 |
| Away | 55-51 |
| Neutral | 5-10 |

| | |
|----------------------------------|-------|
| Midwest Conference Record | 98-72 |
| Home | 50-35 |
| Away | 48-37 |

| | |
|-----------------------------|-------|
| Nonconference Record | 27-32 |
| Home | 11-7 |
| Away | 11-15 |
| Neutral | 5-10 |

DePagter vs. the MWC

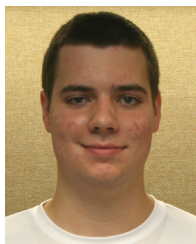
| | |
|------------------|------|
| Beloit | 14-4 |
| Cornell | 5-5 |
| Grinnell | 5-12 |
| Illinois College | 18-2 |
| Knox | 19-1 |
| Lake Forest | 9-8 |
| Monmouth | 14-3 |
| Ripon | 6-12 |
| St. Norbert | 5-16 |

DePagter vs. Nonconference Opponents

| | |
|--------------------------|-------|
| Ashford | 0-1 |
| Bard | 1-0 |
| Cal Lutheran | 0-1 |
| Caltech | 1-0 |
| Carroll | 10-10 |
| Coe | 1-1 |
| Concordia (Ill.) | 1-0 |
| Dominican (Ill.) | 3-0 |
| Elmhurst | 0-2 |
| Florida College | 1-0 |
| Grand View | 0-1 |
| Johnson and Wales (Fla.) | 1-0 |
| Lakeland | 1-0 |
| Manchester | 0-1 |
| Marian | 2-2 |
| Mount St. Vincent | 1-0 |
| Nova Southeastern | 1-0 |
| Randolph | 1-0 |
| St. Mary's (Md.) | 0-1 |
| Southeastern (Fla.) | 0-1 |
| Trinity (Fla.) | 1-0 |
| Viterbo | 0-1 |
| Washington (Mo.) | 0-1 |
| Wheaton (Ill.) | 0-1 |
| Wisconsin Lutheran | 4-2 |
| UW-Oshkosh | 1-3 |
| UW-Stevens Point | 1-9 |
| UW-Stout | 0-1 |
| UW-Whitewater | 0-2 |

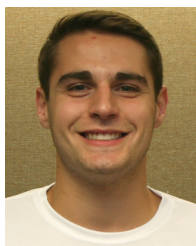
berth. Lawrence has a tough schedule ahead as the Vikings play Ripon twice, travel to red-hot Lake Forest and host Monmouth.

►Junior forward Ben Peterson (River Forest, Ill./Fenwick) enjoyed a stellar shooting day in Lawrence's 101-67 victory over Beloit. Peterson went 7-for-8 from beyond the arc to match his career high for 3-pointers as he scored 25 points. Peterson is now averaging 11 points per game while shooting 48.1 percent from the floor.



Ben Peterson

►Junior guard Jeremy Stephani (Arlington Heights, Ill./Wheeling) ran his streak of scoring in double figures to seven games with 19 points against Beloit. Stephani leads the team in scoring at 13.9 points per game. Stephani passed 700 career points in the win over Beloit.



Jeremy Stephani

►Stephani and Peterson are the team leaders in 3-point shooting. Stephani has made a team-high 44 3-pointers this season, and Peterson has 43 while shooting a team-best 44.3 percent (43-97) from beyond the arc.

►The 101 points scored by the Vikings against Beloit is the most scored by Lawrence against a team other than Grinnell since Lawrence beat Ripon 104-90 on Feb. 20, 2010.

►Lawrence is fifth in the Midwest Conference in scoring defense at 75.7 points per game. The Vikings are eighth in scoring at 71.3.

►Lawrence ranks second in the conference in field goal percentage defense at 40.3 percent. The Vikings are shooting 47.1 percent from the floor, good for fourth in the conference.

Lawrence University Basketball Facts

| | |
|-----------------------------|--|
| Location | Appleton, Wis. |
| Founded | 1847 |
| Enrollment | 1,500 |
| President | Mark Burstein |
| Affiliation | NCAA Division III |
| Conference | Midwest Conference |
| Nickname | Vikings |
| School Colors | Blue and White |
| Home Arena | Alexander Gymnasium (1929, capacity 1,100) |
| Director of Athletics | Christyn Abaray |
| First season of basketball | 1896 |
| Seasons of basketball | 113 |
| All-time record | 980-1081 (.475) |
| Midwest Conference titles | 8 1924-25, 1942-43, 1996-97, 2003-04, 2004-05, 2005-06, 2007-08, 2008-09 |
| MWC Tournament titles | 6 1997, 2004, 2005, 2006, 2008, 2009 |
| NCAA Tournament appearances | 6 1997, 2004, 2005, 2006, 2008, 2009 |

►Lawrence is shooting 35.8 percent from 3-point range, and that ranks fourth in the conference. The Vikings lead the league in defending the 3-pointer at 32.5 percent.

SCOUTING RIPON



►The powerful Red Hawks have lost two straight with defeats at the hands of No. 10 St. Norbert and a hot Lake Forest squad. The Foresters held off a Ripon rally for a 75-73 victory at the Storzer Center this past Saturday. Ty Sabin was limited to 24 points for Ripon in the loss.

►Senior guard Ty Sabin leads all of NCAA Division III in scoring at 29.6 points per game. Sabin, a shoo-in to be an All-American again this season, is shooting a stellar 55.4 percent from the floor and is hitting 44.6 percent of his shots from 3-point range. The versatile Sabin also leads the team in rebounding at 5.7 per game and has handed out a team-high 55 assists.

1,000 POINT CLUB

| | | |
|-----------------|-------|-----------|
| Chris Braier | 1,565 | 2002-06 |
| Joel Dillingham | 1,554 | 1989-93 |
| Ryan Kroeger | 1,537 | 2005-09 |
| Jamie Nikitas | 1,406 | 2012-16 |
| Chris Siebert | 1,360 | 2010-14 |
| Doug Fyfe | 1,342 | 1972-76 |
| Adam LaVoy | 1,273 | 1997-2001 |
| Joel Ungrodt | 1,247 | 1961-64 |
| Matt Miota | 1,246 | 1987-91 |
| Joel DePagter | 1,243 | 1995-98 |
| Ben Zagorski | 1,175 | 1994-98 |
| Mike Fogel | 1,175 | 1975-79 |
| Reggie Geans | 1,160 | 1985-89 |
| John Dekker | 1,117 | 2006-10 |
| Shawn Koerner | 1,115 | 1985-89 |
| Richard Schultz | 1,088 | 1964-67 |
| Tom Steinmetz | 1,073 | 1963-66 |
| Jason Holinbeck | 1,051 | 2001-05 |
| Strat Warden | 1,042 | 1969-72 |
| Bob Townsend | 1,031 | 1966-69 |
| Jim Rasmussen | 1,030 | 1958-61 |
| Ryan DePouw | 1,028 | 2011-15 |
| Rob Cohen | 1,005 | 1976-80 |

►Sabin has 2,324 for his career, and that's third in Midwest Conference history. He's just 56 points from passing Grinnell's Steve Wood. The leader is Grinnell's John Grotberg at 2,848.

►Ripon is second in the league in scoring at 82.6 points per game, and the Red Hawks are third in scoring defense at 74.

►Ripon is the best-shooting team in the conference at 51.4 percent, and the Red Hawks are third in field goal percentage defense at 41.8 percent.

►Ripon ranks first in the MWC in 3-point shooting at 44.7 percent. Ripon is fourth in defending the 3-pointer at 34.3 percent.

SCOUTING MONMOUTH

►Monmouth is coming off a 91-62 loss to St. Norbert and must travel to Cornell before facing Lawrence on Saturday.



►The trio of Will Jones, Lamont Mitchell and Justin Aluya have powered the Scots. Jones is tops on the team at 16.6 points per game and 6.9 rebounds per contest. Mitchell is averaging 15.8 points and 5.3 rebounds, and Aluya is at 15.2 points and 6.4 rebounds.

►Mitchell and Jones are the top 3-point shooters on the team with 31 and 29, respectively, this season.

►Monmouth is sixth in the league in scoring at 74.2 points per game. The Scots ranks seventh in scoring defense at 77.2.

►Monmouth is eighth in the league in shooting at 42.9. The Scots are eighth in field goal percentage defense at 47.3 percent.

►Monmouth is ninth in the league in 3-point shooting at 30.5 percent and ninth in defending the 3-pointer at 38.8 percent.

LAWRENCE'S POSTSEASON HISTORY

►1997

Midwest Conference Tournament at Lawrence
Lawrence 83, Grinnell 82 (semifinals)
Lawrence 90, Knox 79 (championship)
NCAA Division III Tournament
Wabash 69, Lawrence 63 (first round at Wabash)

►1998

Midwest Conference Tournament at Monmouth
Lawrence 79, Monmouth 68 (semifinals)
Ripon 73, Lawrence 60 (championship)

►2000

Midwest Conference Tournament at Lake Forest
Lawrence 67, Lake Forest 61 (semifinals)
Ripon 85, Lawrence 54 (championship)

►2003

Midwest Conference Tournament at Grinnell
Illinois College 86, Lawrence 77 OT (semifinals)

►2004

Midwest Conference Tournament at Lawrence
Lawrence 68, Lake Forest 63 (semifinals)
Lawrence 82, Carroll 71 (championship)
NCAA Division III Tournament
Lawrence 86, Lakeland 51 (first round at Lawrence)
Lawrence 72, Buena Vista 66 (second round at Buena Vista)
Lawrence 86, Sul Ross State 79 OT (Sweet 16 at Puget Sound)
UW-Stevens Point 82, Lawrence 81 OT (Elite Eight at Puget Sound)
*UW-Stevens Point won NCAA title

►2005

Midwest Conference Tournament at Lawrence
Lawrence 87, Carroll 76 (semifinals)
Lawrence 82, Ripon 77 OT (championship)
NCAA Division III Tournament
Lawrence 70, Gustavus Adolphus 56 (first round at Gustavus)
UW-Stevens Point 79, Lawrence 45 (second round at UW-Stevens Point)
*UW-Stevens Point won NCAA title

►2006

Midwest Conference Tournament at Lawrence
Lawrence 88, Knox 62 (semifinals)
Lawrence 68, Carroll 62 (championship)
NCAA Division III Tournament
Lawrence 63, St. Thomas 59 (second round at Lawrence)
Illinois Wesleyan 71, Lawrence 68 (Sweet 16 at Lawrence)

►2008

Midwest Conference Tournament at Lawrence
Lawrence 59, St. Norbert 58 (semifinals)
Lawrence 98, Carroll 95 OT (championship)
NCAA Division III Tournament
Wheaton 93, Lawrence 83 OT (first round at UW-Whitewater)

►2009

Midwest Conference Tournament at Grinnell
Lawrence 90, Carroll 66 (semifinals)
Lawrence 88, Grinnell 69 (championship)
NCAA Division III Tournament
Washington University 67, Lawrence 65 (first round at Elmhurst)
*Washington University won NCAA title

2016-17 Lawrence University Basketball
Lawrence University Combined Team Statistics (as of Feb 07, 2017)
All games

Overall record: 8-10 Conf: 8-6 Home: 4-4 Away: 4-4 Neutral: 0-2

| # | Player | gp-gs | min | avg | Total | | 3-Point | | F-Throw | | Rebounds | | | | | | | | | | pts | avg |
|----------------|--------------------|-------|------|------|----------|------|---------|------|---------|------|----------|-----|-----|------|-----|----|-----|-----|-----|-----|------|------|
| | | | | | fg-fga | fg% | 3fg-fga | 3fg% | ft-fa | ft% | off | def | tot | avg | pf | dq | a | to | blk | stl | | |
| 12 | Jeremy Stephani | 18-18 | 551 | 30.6 | 89-209 | .426 | 44-127 | .346 | 29-42 | .690 | 19 | 54 | 73 | 4.1 | 35 | 0 | 35 | 27 | 0 | 19 | 251 | 13.9 |
| 04 | Mitch Willer | 18-18 | 474 | 26.3 | 94-172 | .547 | 0-4 | .000 | 15-25 | .600 | 24 | 99 | 123 | 6.8 | 58 | 2 | 15 | 25 | 27 | 7 | 203 | 11.3 |
| 32 | Ben Peterson | 18-2 | 324 | 18.0 | 64-133 | .481 | 43-97 | .443 | 27-35 | .771 | 8 | 89 | 97 | 5.4 | 63 | 4 | 15 | 23 | 7 | 3 | 198 | 11.0 |
| 23 | Peter Winslow | 16-15 | 412 | 25.8 | 52-112 | .464 | 18-47 | .383 | 17-21 | .810 | 15 | 56 | 71 | 4.4 | 42 | 2 | 23 | 26 | 7 | 11 | 139 | 8.7 |
| 02 | Quinn Fisher | 18-12 | 367 | 20.4 | 46-101 | .455 | 18-47 | .383 | 18-27 | .667 | 5 | 20 | 25 | 1.4 | 37 | 1 | 56 | 51 | 0 | 16 | 128 | 7.1 |
| 05 | Abhishek Venkatesh | 18-1 | 295 | 16.4 | 40-85 | .471 | 3-17 | .176 | 8-17 | .471 | 4 | 20 | 24 | 1.3 | 19 | 0 | 36 | 25 | 0 | 7 | 91 | 5.1 |
| 11 | Evan McLaughlin | 17-9 | 389 | 22.9 | 28-50 | .560 | 1-5 | .200 | 20-35 | .571 | 18 | 35 | 53 | 3.1 | 40 | 1 | 39 | 25 | 9 | 22 | 77 | 4.5 |
| 24 | Connor Weas | 18-10 | 311 | 17.3 | 21-47 | .447 | 9-28 | .321 | 12-16 | .750 | 12 | 28 | 40 | 2.2 | 27 | 0 | 20 | 18 | 2 | 4 | 63 | 3.5 |
| 10 | Eric Weiss | 17-5 | 217 | 12.8 | 19-45 | .422 | 4-15 | .267 | 6-14 | .429 | 1 | 27 | 28 | 1.6 | 22 | 0 | 32 | 19 | 0 | 6 | 48 | 2.8 |
| 01 | George Mavrakis | 11-0 | 78 | 7.1 | 10-22 | .455 | 1-5 | .200 | 8-11 | .727 | 3 | 12 | 15 | 1.4 | 5 | 0 | 7 | 6 | 0 | 2 | 29 | 2.6 |
| 21 | Chase Kruger | 6-0 | 25 | 4.2 | 5-7 | .714 | 1-2 | .500 | 1-2 | .500 | 4 | 2 | 6 | 1.0 | 3 | 0 | 2 | 0 | 0 | 0 | 12 | 2.0 |
| 15 | Jason Dougherty | 12-0 | 62 | 5.2 | 7-17 | .412 | 0-0 | .000 | 5-9 | .556 | 1 | 7 | 8 | 0.7 | 15 | 0 | 5 | 7 | 0 | 0 | 19 | 1.6 |
| 13 | Tyler Klug | 10-0 | 75 | 7.5 | 4-14 | .286 | 2-8 | .250 | 3-7 | .429 | 2 | 7 | 9 | 0.9 | 11 | 0 | 6 | 11 | 0 | 1 | 13 | 1.3 |
| 35 | Joe Duero | 5-0 | 15 | 3.0 | 2-4 | .500 | 2-4 | .500 | 0-0 | .000 | 0 | 2 | 2 | 0.4 | 2 | 0 | 0 | 0 | 0 | 0 | 6 | 1.2 |
| 30 | Owen Mitchell | 7-0 | 20 | 2.9 | 2-6 | .333 | 2-6 | .333 | 0-1 | .000 | 0 | 1 | 1 | 0.1 | 1 | 0 | 0 | 1 | 0 | 0 | 6 | 0.9 |
| 14 | Jacob Krumberger | 4-0 | 10 | 2.5 | 0-2 | .000 | 0-1 | .000 | 0-0 | .000 | 1 | 2 | 3 | 0.8 | 2 | 0 | 2 | 1 | 0 | 0 | 0 | 0.0 |
| Team | | | | | | | | | | | 20 | 25 | 45 | | | | | 11 | | | | |
| Total..... | | 18 | 3625 | | 483-1026 | .471 | 148-413 | .358 | 169-262 | .645 | 137 | 486 | 623 | 34.6 | 382 | 10 | 293 | 276 | 52 | 98 | 1283 | 71.3 |
| Opponents..... | | 18 | 3625 | | 436-1082 | .403 | 149-458 | .325 | 342-476 | .718 | 223 | 447 | 670 | 37.2 | 300 | - | 233 | 197 | 45 | 145 | 1363 | 75.7 |

| TEAM STATISTICS | LU | OPP | Date | Opponent | Score | Att. |
|------------------------|----------|----------|---------------------|------------------------|-------------|------|
| SCORING | 1283 | 1363 | 11/16/16 | at Wisconsin Lutheran | L 68-76 | 312 |
| Points per game | 71.3 | 75.7 | 11/26/16 | UW-STEVENS POINT | L 50-69 | 872 |
| Scoring margin | -4.4 | - | * 12/02/16 | at Illinois College | W 78-70 | 470 |
| FIELD GOALS-ATT | 483-1026 | 436-1082 | * 12/03/16 | at Knox College | W 90-65 | 250 |
| Field goal pct | .471 | .403 | * 12/07/16 | at St. Norbert College | L 45-76 | 540 |
| 3 POINT FG-ATT | 148-413 | 149-458 | * 12/10/16 | GRINNELL COLLEGE | Lot 125-133 | 801 |
| 3-point FG pct | .358 | .325 | 12/29/16 | vs UW-Whitewater | L 71-97 | 150 |
| 3-pt FG made per game | 8.2 | 8.3 | 12/30/16 | vs UW-Stout | L 71-74 | 150 |
| FREE THROWS-ATT | 169-262 | 342-476 | * 01/02/17 | KNOX COLLEGE | W 68-61 | 647 |
| Free throw pct | .645 | .718 | * 01/07/17 | at Monmouth College | W 66-62 | 125 |
| F-Throws made per game | 9.4 | 19.0 | * 01/13/17 | CORNELL COLLEGE | W 60-56 | 609 |
| REBOUNDS | 623 | 670 | * 01/14/17 | ILLINOIS COLLEGE | W 63-54 | 734 |
| Rebounds per game | 34.6 | 37.2 | * 01/18/17 | LAKE FOREST COLLEGE | L 53-66 | 567 |
| Rebounding margin | -2.6 | - | * 01/21/17 | at Beloit College | W 62-58 | 500 |
| ASSISTS | 293 | 233 | * 01/25/17 | ST. NORBERT COLLEGE | L 57-77 | 857 |
| Assists per game | 16.3 | 12.9 | * 01/28/17 | at Grinnell College | L 91-129 | 872 |
| TURNOVERS | 276 | 197 | * 01/31/17 | at Cornell College | L 64-73 | 130 |
| Turnovers per game | 15.3 | 10.9 | * 02/04/17 | BELOIT COLLEGE | W 101-67 | 874 |
| Turnover margin | -4.4 | - | * - Conference game | | | |
| Assist/turnover ratio | 1.1 | 1.2 | | | | |
| STEALS | 98 | 145 | | | | |
| Steals per game | 5.4 | 8.1 | | | | |
| BLOCKS | 52 | 45 | | | | |
| Blocks per game | 2.9 | 2.5 | | | | |
| ATTENDANCE | 5961 | 3499 | | | | |
| Home games-Avg/Game | 8-745 | 8-400 | | | | |
| Neutral site-Avg/Game | - | 2-150 | | | | |

| Score by Periods | 1st | 2nd | OT | Totals |
|---------------------|-----|-----|----|--------|
| Lawrence University | 627 | 644 | 12 | 1283 |
| Opponents | 642 | 701 | 20 | 1363 |

2016-17 Lawrence University Basketball
Lawrence University Points-Rebounds-Assists (as of Feb 07, 2017)
All games

| Opponent | Date | Score | | 01 | 02 | 04 | 05 | 10 | 11 | 12 |
|------------------------|----------|---------|---|------------|------------|------------|------------|------------|------------|------------|
| | | | | MAVRAKIS,G | FISHER,QUI | WILLER,MIT | VENKATESH, | WEISS,ERIC | MCLAUGHLIN | STEPHANI,J |
| at Wisconsin Lutheran | 11/16/16 | 68-76 | L | DNP | 8-4-3 | 12-3-0 | 0-0-0 | 4-1-2 | 10-1-1 | 16-6-3 |
| UW-STEVENS POINT | 11/26/16 | 50-69 | L | 0-0-1 | 7-0-2 | 10-8-1 | 4-1-2 | 0-0-1 | 0-0-1 | 7-4-3 |
| at Illinois College | 12/02/16 | 78-70 | w | 2-2-0 | 13-1-2 | 14-9-1 | 2-0-0 | 5-2-4 | 2-2-0 | 13-6-4 |
| at Knox College | 12/03/16 | 90-65 | w | 5-3-1 | 9-0-10 | 17-6-0 | 1-0-3 | DNP | DNP | 11-4-3 |
| at St. Norbert College | 12/07/16 | 45-76 | L | 2-3-3 | 5-1-3 | 12-8-1 | 0-1-0 | 2-3-3 | 0-1-0 | 13-2-0 |
| GRINNELL COLLEGE | 12/10/16 | 125-133 | L | 2-0-1 | 6-2-10 | 30-15-0 | 16-1-6 | 5-3-2 | 6-4-6 | 19-5-6 |
| vs UW-Whitewater | 12/29/16 | 71-97 | L | 9-1-0 | 3-0-3 | 8-1-0 | 7-1-3 | 3-0-0 | 9-3-0 | 10-5-2 |
| vs UW-Stout | 12/30/16 | 71-74 | L | 0-0-0 | 7-0-4 | 18-8-0 | 9-2-0 | 0-0-0 | 5-2-3 | 11-4-2 |
| KNOX COLLEGE | 01/02/17 | 68-61 | w | DNP | 13-2-3 | 11-11-2 | 2-4-3 | 3-2-1 | 4-3-0 | 15-3-0 |
| at Monmouth College | 01/07/17 | 66-62 | w | 0-0-0 | 8-0-1 | 9-8-4 | 6-0-1 | 10-3-0 | 3-5-2 | 12-4-1 |
| CORNELL COLLEGE | 01/13/17 | 60-56 | w | 0-0-0 | 2-0-1 | 4-4-1 | 4-1-3 | 0-5-2 | 4-4-4 | 8-3-1 |
| ILLINOIS COLLEGE | 01/14/17 | 63-54 | w | DNP | 4-4-0 | 4-9-1 | 0-3-1 | 2-1-0 | 5-5-6 | 23-6-3 |
| LAKE FOREST COLLEGE | 01/18/17 | 53-66 | L | DNP | 5-2-3 | 18-9-1 | 0-1-1 | 5-2-5 | 3-2-3 | 14-3-1 |
| at Beloit College | 01/21/17 | 62-58 | w | DNP | 18-2-0 | 2-3-0 | 6-0-1 | 0-3-1 | 9-1-2 | 17-7-1 |
| ST. NORBERT COLLEGE | 01/25/17 | 57-77 | L | DNP | 10-1-1 | 6-3-1 | 6-1-3 | 0-0-3 | 0-2-1 | 10-2-0 |
| at Grinnell College | 01/28/17 | 91-129 | L | 0-0-0 | 4-2-4 | 12-13-1 | 13-2-5 | 9-1-3 | 2-3-1 | 13-2-2 |
| at Cornell College | 01/31/17 | 64-73 | L | DNP | 2-1-0 | 10-4-0 | 7-3-1 | 0-1-5 | 4-8-2 | 20-5-1 |
| BELOIT COLLEGE | 02/04/17 | 101-67 | w | 9-6-1 | 4-3-6 | 6-1-1 | 8-3-3 | 0-1-0 | 11-7-7 | 19-2-2 |

| Opponent | Date | Score | | 13 | 14 | 15 | 21 | 23 | 24 | 30 |
|------------------------|----------|---------|---|------------|------------|------------|------------|------------|------------|------------|
| | | | | KLUG,TYLER | KRUMBERGER | DOUGHERTY, | KRUGER,CHA | WINSLOW,PE | WEAS,CONNO | MITCHELL,O |
| at Wisconsin Lutheran | 11/16/16 | 68-76 | L | 0-1-0 | DNP | 0-0-0 | DNP | 6-5-6 | 7-5-0 | DNP |
| UW-STEVENS POINT | 11/26/16 | 50-69 | L | 0-0-0 | DNP | 0-1-0 | DNP | 6-2-1 | 2-1-1 | DNP |
| at Illinois College | 12/02/16 | 78-70 | w | DNP | DNP | 2-1-0 | DNP | 8-4-2 | 6-2-3 | DNP |
| at Knox College | 12/03/16 | 90-65 | w | 0-2-1 | 0-1-0 | 1-0-0 | 2-0-0 | 9-8-2 | 3-2-1 | 0-0-0 |
| at St. Norbert College | 12/07/16 | 45-76 | L | 0-0-0 | 0-0-0 | 6-1-0 | 2-0-0 | 0-4-0 | 0-2-0 | 3-0-0 |
| GRINNELL COLLEGE | 12/10/16 | 125-133 | L | DNP | DNP | DNP | DNP | 26-12-6 | 6-3-3 | DNP |
| vs UW-Whitewater | 12/29/16 | 71-97 | L | 0-1-1 | DNP | 2-0-0 | 3-2-1 | 7-0-0 | 0-1-0 | 0-0-0 |
| vs UW-Stout | 12/30/16 | 71-74 | L | DNP | DNP | 0-2-1 | DNP | 5-2-1 | 2-2-0 | DNP |
| KNOX COLLEGE | 01/02/17 | 68-61 | w | DNP | DNP | DNP | DNP | 11-9-0 | 0-1-1 | DNP |
| at Monmouth College | 01/07/17 | 66-62 | w | DNP | DNP | DNP | DNP | 4-2-2 | 0-1-4 | DNP |
| CORNELL COLLEGE | 01/13/17 | 60-56 | w | DNP | DNP | DNP | DNP | 19-5-0 | 7-0-1 | DNP |
| ILLINOIS COLLEGE | 01/14/17 | 63-54 | w | DNP | DNP | DNP | DNP | 17-5-1 | 6-2-0 | DNP |
| LAKE FOREST COLLEGE | 01/18/17 | 53-66 | L | DNP | DNP | DNP | DNP | 6-1-1 | 0-2-0 | DNP |
| at Beloit College | 01/21/17 | 62-58 | w | 0-1-0 | DNP | 0-1-1 | DNP | 2-5-0 | 0-3-2 | DNP |
| ST. NORBERT COLLEGE | 01/25/17 | 57-77 | L | 3-2-1 | DNP | 0-0-0 | 0-1-0 | 0-2-0 | 11-2-1 | 0-0-0 |
| at Grinnell College | 01/28/17 | 91-129 | L | 5-0-3 | 0-1-1 | 2-1-0 | 2-2-0 | 13-5-1 | 0-6-0 | 3-1-0 |
| at Cornell College | 01/31/17 | 64-73 | L | 3-1-0 | DNP | 2-1-1 | DNP | DNP | 6-3-2 | 0-0-0 |
| BELOIT COLLEGE | 02/04/17 | 101-67 | w | 2-1-0 | 0-1-1 | 4-0-2 | 3-1-1 | DNP | 7-2-1 | 0-0-0 |

2016-17 Lawrence University Basketball
Lawrence University Points-Rebounds-Assists (as of Feb 07, 2017)
All games

| Opponent | Date | Score | | 32 | 35 |
|------------------------|----------|---------|---|------------|-----------|
| | | | | PETERSON,B | DUERO,JOE |
| at Wisconsin Lutheran | 11/16/16 | 68-76 | L | 5-8-2 | DNP |
| UW-STEVENSON POINT | 11/26/16 | 50-69 | L | 14-5-1 | DNP |
| at Illinois College | 12/02/16 | 78-70 | W | 11-4-1 | DNP |
| at Knox College | 12/03/16 | 90-65 | W | 29-10-2 | 3-2-0 |
| at St. Norbert College | 12/07/16 | 45-76 | L | 0-4-0 | 0-0-0 |
| GRINNELL COLLEGE | 12/10/16 | 125-133 | L | 9-4-0 | DNP |
| vs UW-Whitewater | 12/29/16 | 71-97 | L | 10-10-2 | 0-0-0 |
| vs UW-Stout | 12/30/16 | 71-74 | L | 14-9-0 | DNP |
| KNOX COLLEGE | 01/02/17 | 68-61 | W | 9-5-1 | DNP |
| at Monmouth College | 01/07/17 | 66-62 | W | 14-5-0 | DNP |
| CORNELL COLLEGE | 01/13/17 | 60-56 | W | 12-3-1 | DNP |
| ILLINOIS COLLEGE | 01/14/17 | 63-54 | W | 2-8-0 | DNP |
| LAKE FOREST COLLEGE | 01/18/17 | 53-66 | L | 2-4-3 | DNP |
| at Beloit College | 01/21/17 | 62-58 | W | 8-6-0 | DNP |
| ST. NORBERT COLLEGE | 01/25/17 | 57-77 | L | 11-1-0 | DNP |
| at Grinnell College | 01/28/17 | 91-129 | L | 13-3-0 | 0-0-0 |
| at Cornell College | 01/31/17 | 64-73 | L | 10-3-0 | DNP |
| BELOIT COLLEGE | 02/04/17 | 101-67 | W | 25-5-2 | 3-0-0 |