



Lawrence University (0-2, 0-0 MWC)

at

Illinois College (1-2, 0-1 MWC),

Knox College (0-3, 0-0 MWC)

Friday and Saturday, Dec. 2-3, 2016



2016-17 LAWRENCE SCHEDULE

Date	Opponent	Time/Res.
11/16	at Wisconsin Lutheran L, 76-68	
11/26	UW-Stevens Point L, 69-50	
12/2	at Illinois College	7:30 pm
12/3	at Knox	3:00 pm
12/7	at St. Norbert	7:30 pm
12/10	Grinnell	3:00 pm
12/17	at MSOE	4:15 pm
12/29-30	Wisconsin Dells Classic	
12/29	vs. UW-Whitewater	7:00 pm
12/30	vs. UW-Stout	5:00 pm
1/2	Knox	3:00 pm
1/7	at Monmouth	3:00 pm
1/13	Cornell	7:30 pm
1/14	Illinois College	3:00 pm
1/18	Lake Forest	7:30 pm
1/21	at Beloit	3:00 pm
1/25	St. Norbert	7:30 pm
1/28	at Grinnell	3:00 pm
1/31	at Cornell	7:30 pm
2/4	Beloit	4:00 pm
2/8	at Ripon	7:30 pm
2/11	Monmouth	3:00 pm
2/14	Ripon	7:30 pm
2/18	at Lake Forest	3:00 pm
2/24-25	MWC Tournament	TBA

Home games in bold

PROBABLE STARTERS

Lawrence



Forward	Mitch Willer	Sr.	6-7
Forward	Pete Winslow	Sr.	6-3
Forward	Connor Weas	Sr.	6-4
Guard	Jeremy Stephani	Jr.	6-0
Guard	Quinn Fisher	Fr.	5-9

Illinois College



Forward	Payton Dugan	Sr.	6-5
Forward	Max Stutsman	Jr.	6-6
Guard	Tim Schappaugh	Sr.	6-3
Guard	Mason Speer	So.	6-0
Guard	Cody Hildebrand	Jr.	6-1

Knox



Forward	Eric Thompson	Fr.	6-7
Forward	Marko Protic	Jr.	6-5
Guard	Marcellis Davis	Sr.	6-1
Guard	Deandre Weathersby	Sr.	5-8
Guard	DJ Lewis	Jr.	6-0

SCHEDULE

►The Vikings start the weekend road trip with a 7:30 p.m. game at Illinois College's Sherman Gymnasium in Jacksonville, Ill.

►Lawrence travels to Galesburg, Ill., for a 3 p.m. game on Saturday at Knox's Memorial Gymnasium.

VIDEO WEBCAST

►All Lawrence home games feature a free video webcast at: <http://portal.stretchinternet.com/lawrence/>. Dick Knapinski and Anthony Totoraitis are on the call for Lawrence home games. A link for Lawrence webcasts is on the Lawrence basketball page.

THE COACHES

►Joel DePagter (Lawrence 1998), the 1997 Midwest Conference Player of

the Year and 2009 Midwest Conference Coach of the Year, is in his 10th season at Lawrence and has a record of 117-96 (.549).

►Mike Worrell (Urbana 1986) is in his 21st season at Illinois College and has a record of 194-269 (.419).

►Kevin Walden (Knox 2001) is in his fifth season at Knox and has a record of 10-85 (.118). He is in his ninth season overall and has a record of 53-139 (.276).

THE SERIES

►In a series that dates to the 1985-86 season, Lawrence holds a 34-10 advantage over Illinois College. The Vikings have beaten the Blueboys 10 consecutive times and have won 22 of the last 24.

►In a series that goes all the way back

to 1925, Knox holds a 61-58 edge over the Vikings. Lawrence has really closed the gap in the series in recent years. Lawrence has won nine straight over the Prairie Fire and 25 of the last 28 dating back to the 2000-01 season.

LAST GAME

A surge midway through the second half allowed the UW-Stevens Point men's basketball team to pull away this past Saturday and post a 69-50 nonconference win over Lawrence at Alexander Gymnasium.

Ethan Bublitz recorded a double-double with 19 points and 11 rebounds for the Pointers, and Mark Nelson added 10 points and eight boards.

Ben Peterson came off the bench to lead Lawrence with 14 points. Peterson went 4-for-5 from beyond the arc. Mitch Willer added 10 points and a team-best eight rebounds to go along with a game-high four blocks for the Vikings.

Lawrence trailed 34-27 at the half, but the Vikings made a run at the Pointers to start the final 20 minutes. Lawrence outscored Stevens Point 15-9 over the first 7:08 of the second half, and Jeremy Stephani's jumper cut the margin to 43-42.

The Pointers responded by scoring the game's next 10 points, including back-to-back 3-pointers from Bublitz and Luke Zuiker, to stretch the lead to 53-42 with 10:17 remaining.

Stephani, who finished with seven points, four rebounds and three assists, hit a 3-pointer to stop the run and cut the margin to 53-45. That's as close as the Vikings would get as the Pointers slowly pulled away.

The final margin was Stevens Point's biggest lead of the game.

Stevens Point jumped out to a 9-0 to start the game, but Lawrence answered quickly. Pete Winslow and Peterson hit 3-pointers to open the scoring for Lawrence, and that started a 16-5 for the Vikings. Peterson capped the outburst with his third 3-pointer of the first half to give Lawrence a 16-14 lead with 12:06 left in the first.



MWC Standings

	MWC		Overall	
	W	L	W	L
Monmouth	1	0	1	1
Lake Forest	1	0	1	3
Lawrence	0	0	0	2
Ripon	0	0	2	0
Cornell	0	0	2	1
St. Norbert	0	0	1	1
Grinnell	0	0	2	2
Knox	0	0	0	3
Beloit	0	1	2	1
Illinois College	0	1	1	2

Games Tuesday

Simpson at Grinnell
Beloit at UW-Whitewater

Games Friday

Lawrence at Illinois College
Beloit at Grinnell
St. Norbert at Knox
Lake Forest at Cornell
Ripon at Monmouth

Games Saturday

Lawrence at Knox
St. Norbert at Illinois College
Ripon at Cornell
Beloit at Monmouth
Lake Forest at Grinnell

The game was tied at 20-20 when Stevens Point hit seven of its final 14 shots of the half to pull ahead. Lawrence turned the ball over five times in the final 7:16 of the first half, and Stevens Point led 34-27 heading into the break.

VIKINGS UPDATE

►Lawrence shot the ball much better from beyond the arc in the loss to UW-Stevens Point. After hitting just 22.8 percent on 3-pointers in the opener,



DEPAGTER'S RECORD

Joel DePagter is in his 10th season as the Vikings' coach. He is the only person in Midwest Conference history to be named both Player of the Year (1997) and Coach of the Year (2009).



Overall Record	117-96
Home	61-40
Away	51-48
Neutral	5-8
Midwest Conference Record	90-66
Home	46-32
Away	44-34
Nonconference Record	27-30
Home	11-7
Away	11-15
Neutral	5-8

DePagter vs. the MWC

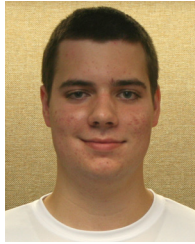
Beloit	12-4
Cornell	4-4
Grinnell	5-10
Illinois College	15-2
Knox	16-1
Lake Forest	9-7
Monmouth	13-3
Ripon	6-12
St. Norbert	5-14

DePagter vs. Nonconference Opponents

Ashford	0-1
Bard	1-0
Cal Lutheran	0-1
Caltech	1-0
Carroll	10-10
Coe	1-1
Concordia (Ill.)	1-0
Dominican (Ill.)	3-0
Elmhurst	0-2
Florida College	1-0
Grand View	0-1
Johnson and Wales (Fla.)	1-0
Lakeland	1-0
Manchester	0-1
Marian	2-2
Mount St. Vincent	1-0
Nova Southeastern	1-0
Randolph	1-0
St. Mary's (Md.)	0-1
Southeastern (Fla.)	0-1
Trinity (Fla.)	1-0
Viterbo	0-1
Washington (Mo.)	0-1
Wheaton (Ill.)	0-1
Wisconsin Lutheran	4-2
UW-Oshkosh	1-3
UW-Stevens Point	1-9
UW-Whitewater	0-1

Lawrence went 8-for-21 (38.1 percent) against the Pointers.

►Junior forward Ben Peterson (River Forest, Ill./Fenwick) was especially effective as he went 4-for-5 from beyond the arc on his way to a career-high 14 points. Peterson's previous career high was 13 points in the 2015-16 season finale at Monmouth. The four 3-pointers also was a career high for Peterson, whose previous best was three, which he did four times last season.



Ben Peterson

►Senior forward Mitch Willer (Sussex, Wis./Sussex Hamilton) continued his strong start to the season with 10 points, eight rebounds and a career-high four blocks against UW-Stevens Point. Willer, who is shooting 64.3 percent from the floor this season, topped his previous career high of three, which he had matched in the season opener at Wisconsin Lutheran.

►Lawrence shot just two free throws in the loss to UW-Stevens Point.

►Lawrence leads the Midwest Conference in free-throw shooting at 82.4 percent (14-17). Opponents are shooting 73.9 percent from the line (34-46).

►Lawrence ranks third in the Midwest Conference in scoring defense at 72.5 points per game. The Vikings are 10th in scoring offense at 63.5 points per contest.

►Lawrence ranks second in the Midwest Conference in field goal percentage defense at 40.7 percent. The Vikings are 10th in the conference in field goal percentage at 40.0 percent.

►Lawrence is shooting 28.6 percent from 3-point range, and that ranks ninth in the conference. The Vikings are third in the league in defending

Lawrence University Basketball Facts

Location	Appleton, Wis.
Founded	1847
Enrollment	1,500
President	Mark Burstein
Affiliation	NCAA Division III
Conference	Midwest Conference
Nickname	Vikings
School Colors	Blue and White
Home Arena	Alexander Gymnasium (1929, capacity 1,100)
Director of Athletics	Christyn Abaray
First season of basketball	1896
Seasons of basketball	113
All-time record	972-1075 (.475)
Midwest Conference titles	8
	1924-25, 1942-43, 1996-97, 2003-04, 2004-05, 2005-06, 2007-08, 2008-09
MWC Tournament titles	6
	1997, 2004, 2005, 2006, 2008, 2009
NCAA Tournament appearances	6
	1997, 2004, 2005, 2006, 2008, 2009

the 3-pointer at 27.5 percent.

SCOUTING ILLINOIS COLLEGE

►The Blueboys opened Midwest Conference play with a 76-61 loss at Monmouth on Nov. 22. Illinois College's victory this season was a 95-89 win over Concordia Chicago in the opener.



►Guard Tim Schappaugh is one of four Illinois College players averaging in double figures at 15.0 points per game. He is shooting 43.3 percent from the floor and is a perfect 15-for-15 from the foul line.

►Payton Dugan is tops on the team in rebounding at 6.0 per game and ranks second on the squad at 13.3 points per game.

►Mason Speer is tops on the squad at 4.0 assists per game and is averaging

1,000 POINT CLUB

Chris Braier	1,565	2002-06
Joel Dillingham	1,554	1989-93
Ryan Kroeger	1,537	2005-09
Jamie Nikitas	1,406	2012-16
Chris Siebert	1,360	2010-14
Doug Fyfe	1,342	1972-76
Adam LaVoy	1,273	1997-2001
Joel Ungrodt	1,247	1961-64
Matt Miota	1,246	1987-91
Joel DePagter	1,243	1995-98
Ben Zagorski	1,175	1994-98
Mike Fogel	1,175	1975-79
Reggie Geans	1,160	1985-89
John Dekker	1,117	2006-10
Shawn Koerner	1,115	1985-89
Richard Schultz	1,088	1964-67
Tom Steinmetz	1,073	1963-66
Jason Holinbeck	1,051	2001-05
Strat Warden	1,042	1969-72
Bob Townsend	1,031	1966-69
Jim Rasmussen	1,030	1958-61
Ryan DePouw	1,028	2011-15
Rob Cohen	1,005	1976-80

10.0 points per contest.

►Illinois College ranks fourth in the league in scoring at 78.0 points per game. The Blueboys are eighth in scoring defense at 90.7.

►The Blueboys are shooting 43.6 percent from the floor, good for seventh in the league. Illinois College is seventh in field goal percentage defense at 47.5.

►Illinois College is one of the top 3-point shooting club in the conference at 36.2 percent, which is second in the MWC. They are last in defending the 3-pointer at 41.2 percent.

SCOUTING KNOX

►Knox is searching for its first victory of the season, and the Prairie Fire plays St.



Norbert on Friday before hosting the Vikings on Saturday. Knox has opened the season with losses to Greenville, Dominican (Ill.) and Eureka.

►Forwards Eric Thompson and Marko Protic lead Knox in scoring and rebounding. Thompson is at 14.3 points and 9.0 rebounds per game, and Protic is at 13.3 points and 8.3 rebounds.

►The top 3-point shooter for the Prairie Fire is Marcellis Davis, who is at 50 percent from beyond the arc and averaging 10.7 points per game.

►Knox is averaging 27.3 turnovers per game and had 41 in the loss to run-and-gun Greenville.

►Knox is third in the league in scoring at 78.7 points per game and ninth in scoring defense at 99.0.

►Knox is shooting 43.7 percent from the floor, good for sixth in the league. Knox is seventh in field goal percentage defense at 46.2 percent. Knox is last in 3-point shooting at 22.8 percent and rank fifth in defending the 3-pointer at 34.0 percent.

LAWRENCE'S POSTSEASON HISTORY

►1997

Midwest Conference Tournament at Lawrence
Lawrence 83, Grinnell 82 (semifinals)
Lawrence 90, Knox 79 (championship)
NCAA Division III Tournament
Wabash 69, Lawrence 63 (first round at Wabash)

►1998

Midwest Conference Tournament at Monmouth
Lawrence 79, Monmouth 68 (semifinals)
Ripon 73, Lawrence 60 (championship)

►2000

Midwest Conference Tournament at Lake Forest
Lawrence 67, Lake Forest 61 (semifinals)
Ripon 85, Lawrence 54 (championship)

►2003

Midwest Conference Tournament at Grinnell
Illinois College 86, Lawrence 77 OT (semifinals)

►2004

Midwest Conference Tournament at Lawrence
Lawrence 68, Lake Forest 63 (semifinals)
Lawrence 82, Carroll 71 (championship)
NCAA Division III Tournament
Lawrence 86, Lakeland 51 (first round at Lawrence)
Lawrence 72, Buena Vista 66 (second round at Buena Vista)
Lawrence 86, Sul Ross State 79 OT (Sweet 16 at Puget Sound)
UW-Stevens Point 82, Lawrence 81 OT (Elite Eight at Puget Sound)
*UW-Stevens Point won NCAA title

►2005

Midwest Conference Tournament at Lawrence
Lawrence 87, Carroll 76 (semifinals)
Lawrence 82, Ripon 77 OT (championship)
NCAA Division III Tournament
Lawrence 70, Gustavus Adolphus 56 (first round at Gustavus)
UW-Stevens Point 79, Lawrence 45 (second round at UW-Stevens Point)
*UW-Stevens Point won NCAA title

►2006

Midwest Conference Tournament at Lawrence
Lawrence 88, Knox 62 (semifinals)
Lawrence 68, Carroll 62 (championship)
NCAA Division III Tournament
Lawrence 63, St. Thomas 59 (second round at Lawrence)
Illinois Wesleyan 71, Lawrence 68 (Sweet 16 at Lawrence)

►2008

Midwest Conference Tournament at Lawrence
Lawrence 59, St. Norbert 58 (semifinals)
Lawrence 98, Carroll 95 OT (championship)
NCAA Division III Tournament
Wheaton 93, Lawrence 83 OT (first round at UW-Whitewater)

►2009

Midwest Conference Tournament at Grinnell
Lawrence 90, Carroll 66 (semifinals)
Lawrence 88, Grinnell 69 (championship)
NCAA Division III Tournament
Washington University 67, Lawrence 65 (first round at Elmhurst)
*Washington University won NCAA title

2016-17 Lawrence University Basketball
Lawrence University Combined Team Statistics (as of Nov 29, 2016)
All games

RECORD:	OVERALL	HOME	AWAY	NEUTRAL
ALL GAMES	0-2	0-1	0-1	0-0
CONFERENCE	0-0	0-0	0-0	0-0
NON-CONFERENCE	0-2	0-1	0-1	0-0

#	Player	gp-gs	min	avg	Total		3-Point		F-Throw		Rebounds				pf	dq	a	to	blk	stl	pts	avg
					fg-fga	fg%	3fg-fga	3fg%	ft-fa	ft%	off	def	tot	avg								
12	Jeremy Stephani	2-2	61	30.5	8-26	.308	4-18	.222	3-4	.750	3	7	10	5.0	4	0	6	4	0	1	23	11.5
04	Mitch Willer	2-2	54	27.0	9-14	.643	0-1	.000	4-4	1.000	3	8	11	5.5	5	0	1	2	7	0	22	11.0
32	Ben Peterson	2-1	38	19.0	7-15	.467	4-9	.444	1-2	.500	0	13	13	6.5	8	0	3	4	2	1	19	9.5
02	Quinn Fisher	2-2	50	25.0	6-17	.353	3-11	.273	0-1	.000	2	2	4	2.0	3	0	5	6	0	1	15	7.5
23	Peter Winslow	2-1	55	27.5	4-10	.400	4-8	.500	0-0	.000	3	4	7	3.5	4	0	7	3	2	1	12	6.0
11	Evan McLaughlin	2-0	31	15.5	4-7	.571	0-1	.000	2-2	1.000	1	0	1	0.5	4	0	2	3	2	1	10	5.0
24	Connor Weas	2-2	39	19.5	3-8	.375	1-5	.200	2-2	1.000	3	3	6	3.0	4	0	1	3	0	0	9	4.5
10	Eric Weiss	2-0	15	7.5	2-3	.667	0-1	.000	0-0	.000	0	1	1	0.5	1	0	3	0	0	1	4	2.0
05	Abhishek Venkatesh	2-0	28	14.0	1-6	.167	0-2	.000	2-2	1.000	0	1	1	0.5	2	0	2	1	0	0	4	2.0
01	George Mavrakis	1-0	15	15.0	0-3	.000	0-0	.000	0-0	.000	0	0	0	0.0	0	0	1	1	0	0	0	0.0
15	Jason Dougherty	2-0	8	4.0	0-1	.000	0-0	.000	0-0	.000	1	0	1	0.5	2	0	0	0	0	0	0	0.0
13	Tyler Klug	2-0	6	3.0	0-0	.000	0-0	.000	0-0	.000	0	1	1	0.5	1	0	0	2	0	0	0	0.0
Team											3	4	7									
Total.....		2	400		44-110	.400	16-56	.286	14-17	.824	19	44	63	31.5	38	0	31	29	13	6	118	59.0
Opponents.....		2	400		50-123	.407	11-40	.275	34-46	.739	33	48	81	40.5	29	-	28	14	7	14	145	72.5

TEAM STATISTICS	LU	OPP	Date	Opponent	Score	Att.
SCORING	118	145	11/16/16	at Wisconsin Lutheran	L 68-76	312
Points per game	59.0	72.5	11/26/16	UW-STEVENS POINT	L 50-69	872
Scoring margin	-13.5	-	* - Conference game			
FIELD GOALS-ATT	44-110	50-123				
Field goal pct	.400	.407				
3 POINT FG-ATT	16-56	11-40				
3-point FG pct	.286	.275				
3-pt FG made per game	8.0	5.5				
FREE THROWS-ATT	14-17	34-46				
Free throw pct	.824	.739				
F-Throws made per game	7.0	17.0				
REBOUNDS	63	81				
Rebounds per game	31.5	40.5				
Rebounding margin	-9.0	-				
ASSISTS	31	28				
Assists per game	15.5	14.0				
TURNOVERS	29	14				
Turnovers per game	14.5	7.0				
Turnover margin	-7.5	-				
Assist/turnover ratio	1.1	2.0				
STEALS	6	14				
Steals per game	3.0	7.0				
BLOCKS	13	7				
Blocks per game	6.5	3.5				
ATTENDANCE	872	312				
Home games-Avg/Game	1-872	1-312				
Neutral site-Avg/Game	-	0-0				

Score by Periods	1st	2nd	Totals
Lawrence University	58	60	118
Opponents	65	80	145

2016-17 Lawrence University Basketball
Lawrence University Points-Rebounds-Assists (as of Nov 29, 2016)
All games

<u>Opponent</u>	<u>Date</u>	<u>Score</u>		01	02	04	05	10	11	12
				MAVRAKIS,G	FISHER,QUI	WILLER,MIT	VENKATESH,	WEISS,ERIC	MCLAUGHLIN	STEPHANI,J
at Wisconsin Lutheran	11/16/16	68-76	L	DNP	8-4-3	12-3-0	0-0-0	4-1-2	10-1-1	16-6-3
UW-STEVENS POINT	11/26/16	50-69	L	0-0-1	7-0-2	10-8-1	4-1-2	0-0-1	0-0-1	7-4-3

<u>Opponent</u>	<u>Date</u>	<u>Score</u>		13	15	23	24	32
				KLUG,TYLER	DOUGHERTY,	WINSLOW,PE	WEAS,CONNO	PETERSON,B
at Wisconsin Lutheran	11/16/16	68-76	L	0-1-0	0-0-0	6-5-6	7-5-0	5-8-2
UW-STEVENS POINT	11/26/16	50-69	L	0-0-0	0-1-0	6-2-1	2-1-1	14-5-1