



**Lawrence University (2-2, 2-0 MWC)
at No. 8 St. Norbert College (3-1, 2-0 MWC),**

Wednesday, Dec. 7, 2016

vs. Grinnell College (5-2, 2-0 MWC)

Saturday, Dec. 10, 2016



2016-17 LAWRENCE SCHEDULE

| Date | Opponent | Time/Res. |
|--------------|----------------------------------|-----------|
| 11/16 | at Wisconsin Lutheran L, 76-68 | |
| 11/26 | UW-Stevens Point L, 69-50 | |
| 12/2 | at Illinois College W, 78-70 | |
| 12/3 | at Knox W, 90-65 | |
| 12/7 | at St. Norbert 7:30 pm | |
| 12/10 | Grinnell 3:00 pm | |
| 12/17 | at MSOE 4:15 pm | |
| 12/29-30 | Wisconsin Dells Classic | |
| 12/29 | vs. UW-Whitewater 7:00 pm | |
| 12/30 | vs. UW-Stout 5:00 pm | |
| 1/2 | Knox 3:00 pm | |
| 1/7 | at Monmouth 3:00 pm | |
| 1/13 | Cornell 7:30 pm | |
| 1/14 | Illinois College 3:00 pm | |
| 1/18 | Lake Forest 7:30 pm | |
| 1/21 | at Beloit 3:00 pm | |
| 1/25 | St. Norbert 7:30 pm | |
| 1/28 | at Grinnell 3:00 pm | |
| 1/31 | at Cornell 7:30 pm | |
| 2/4 | Beloit 4:00 pm | |
| 2/8 | at Ripon 7:30 pm | |
| 2/11 | Monmouth 3:00 pm | |
| 2/14 | Ripon 7:30 pm | |
| 2/18 | at Lake Forest 3:00 pm | |
| 2/24-25 | MWC Tournament TBA | |

Home games in bold



PROBABLE STARTERS

Lawrence

| | | | |
|---------|-----------------|-----|-----|
| Forward | Mitch Willer | Sr. | 6-7 |
| Forward | Pete Winslow | Sr. | 6-3 |
| Forward | Connor Weas | Sr. | 6-4 |
| Guard | Jeremy Stephani | Jr. | 6-0 |
| Guard | Quinn Fisher | Fr. | 5-9 |



St. Norbert

| | | | |
|---------|---------------------|-----|------|
| Forward | Mitchell Reinthaler | Jr. | 6-4 |
| Center | Tim Marshall | Sr. | 6-8 |
| Guard | Terrence Garner | Sr. | 6-4 |
| Guard | Ben Bobinski | Sr. | 6-3 |
| Guard | D.J. DeValk | Jr. | 5-10 |



Grinnell

| | | | |
|---------|-----------------|-----|------|
| Forward | Jacob Ekstrand | Jr. | 6-5 |
| Forward | Griffin Boehm | So. | 6-5 |
| Guard | Julian Marx | Sr. | 6-0 |
| Guard | Ky-Sean Johnson | So. | 5-11 |
| Guard | Mike Porter | Sr. | 5-11 |

SCHEDULE

▶The Vikings make the short drive north to Green Bay for a 7:30 p.m. game on Wednesday vs. St. Norbert. The game is scheduled for the Kress Events Center on the UW-Green Bay campus.

▶Lawrence returns home to face Grinnell at 3 p.m. Saturday at Alexander Gymnasium.

VIDEO WEBCAST

▶All Lawrence home games feature a free video webcast at: <http://portal.stretchinternet.com/lawrence/>. Dick Knapinski and Anthony Totoraitis are on the call for Lawrence home games. A link for Lawrence webcasts is on the Lawrence basketball page.

▶Wednesday's game features live stats at: <http://www.snc.edu/athlet->

[ics/teamfiles/livestats/xlive.htm](http://www.snc.edu/athlet-ics/teamfiles/livestats/xlive.htm).

THE COACHES

▶Joel DePagter (Lawrence 1998), the 1997 Midwest Conference Player of the Year and 2009 Midwest Conference Coach of the Year, is in his 10th season at Lawrence and has a record of 119-96 (.553).

▶Gary Grzesk (UWGB 1996) is in his 11th season at St. Norbert and has a record of 197-62 (.761). He is in his 14th season overall with a record of 248-93 (.727).

▶David Arseneault Jr. (Grinnell 2009) is the interim head coach at Grinnell.

THE SERIES

▶In a series that dates to 1918, St. Norbert holds a 57-46 advantage, and the Green Knights are currently on a 14-

game win streak in the rivalry.

►The series with Grinnell goes back to 1940, and the Pioneers hold a 52-50 advantage. Grinnell has won the last three meetings, but Lawrence holds an 18-15 edge in games played vs. Grinnell's "system."

LAST GAME

Ben Peterson scored a career-high 29 points Saturday to lead Lawrence to a 90-65 Midwest Conference rout of Knox at Memorial Gymnasium.

Peterson, whose previous career high was 14 points earlier this season against UW-Stevens Point, hit 9-of-13 shots from the floor and went 4-of-5 from the foul line. Peterson was 7-for-10 on 3-pointers, and the Vikings finished 13-for-28 from beyond the arc. He also posted his first career double-double as he matched his career high with 10 rebounds.

Mitch Willer added 17 points and six rebounds for the Vikings, and Jeremy Stephani had 11 points. Freshman guard Quinn Fisher handed out 10 assists to go with nine points for Lawrence.

Robert Suntken and Deandre Weathersby scored 15 points apiece to pace Knox.

Lawrence jumped on Knox from the opening tip as the Vikings led 12-2 less than six minutes into the game. The Vikings later went on a 15-3 run, capped by a Peterson 3-pointer, to stretch the lead to 27-7 9:29 left in the opening half.

Lawrence led by as many as 26 points in the first half and was up 52-26 at the break.

The Vikings continued to stretch the lead and led by as 31 seven minutes into the second half. Lawrence expanded its advantage to as many as 36 points on Chase Kruger's jumper in the final three minutes.

VIKINGS UPDATE

►Junior forward Ben Peterson (River Forest, Ill./Fenwick) is coming off a career game in the victory over Illinois



MWC Standings

| | MWC | | Overall | |
|------------------|-----|---|---------|---|
| | W | L | W | L |
| Lawrence | 2 | 0 | 2 | 2 |
| Ripon | 2 | 0 | 4 | 0 |
| St. Norbert | 2 | 0 | 3 | 1 |
| Grinnell | 2 | 0 | 5 | 2 |
| Monmouth | 2 | 1 | 2 | 3 |
| Cornell | 1 | 1 | 3 | 2 |
| Lake Forest | 1 | 2 | 1 | 5 |
| Knox | 0 | 2 | 0 | 5 |
| Beloit | 0 | 3 | 2 | 4 |
| Illinois College | 0 | 3 | 1 | 4 |

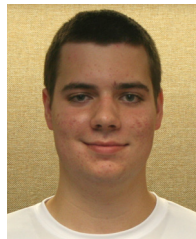
Games Wednesday

- Lawrence at St. Norbert
- Cornell at Grinnell
- Ripon at Beloit
- Monmouth at Knox
- Lake Forest at Illinois College

Games Saturday

- Grinnell at Lawrence
- Knox at Ripon
- Robert Morris at Illinois College
- St. Norbert at Cornell

College. Peterson scored a career-high 29 points and posted his first double-double with 10 rebounds. Peterson topped his previous scoring high of 14 points, which he set just recently against UW-Stevens Point. Peterson matched his career high of 10 rebounds, which he set last season vs. Randolph.



Ben Peterson

►Peterson also hit a career-best seven 3-pointers, which topped his previous best of three, which he had done multiple times. The seven 3-pointers fell two shy of the record of nine set by Ty-

DEPAGTER'S RECORD

Joel DePagter is in his 10th season as the Vikings' coach. He is the only person in Midwest Conference history to be named both Player of the Year (1997) and Coach of the Year (2009).



| | |
|----------------------------------|--------|
| Overall Record | 119-96 |
| Home | 61-40 |
| Away | 53-48 |
| Neutral | 5-8 |
| Midwest Conference Record | 92-66 |
| Home | 46-32 |
| Away | 46-34 |
| Nonconference Record | 27-30 |
| Home | 11-7 |
| Away | 11-15 |
| Neutral | 5-8 |

DePagter vs. the MWC

| | |
|------------------|------|
| Beloit | 12-4 |
| Cornell | 4-4 |
| Grinnell | 5-10 |
| Illinois College | 17-2 |
| Knox | 18-1 |
| Lake Forest | 9-7 |
| Monmouth | 13-3 |
| Ripon | 6-12 |
| St. Norbert | 5-14 |

DePagter vs. Nonconference Opponents

| | |
|--------------------------|-------|
| Ashford | 0-1 |
| Bard | 1-0 |
| Cal Lutheran | 0-1 |
| Caltech | 1-0 |
| Carroll | 10-10 |
| Coe | 1-1 |
| Concordia (Ill.) | 1-0 |
| Dominican (Ill.) | 3-0 |
| Elmhurst | 0-2 |
| Florida College | 1-0 |
| Grand View | 0-1 |
| Johnson and Wales (Fla.) | 1-0 |
| Lakeland | 1-0 |
| Manchester | 0-1 |
| Marian | 2-2 |
| Mount St. Vincent | 1-0 |
| Nova Southeastern | 1-0 |
| Randolph | 1-0 |
| St. Mary's (Md.) | 0-1 |
| Southeastern (Fla.) | 0-1 |
| Trinity (Fla.) | 1-0 |
| Viterbo | 0-1 |
| Washington (Mo.) | 0-1 |
| Wheaton (Ill.) | 0-1 |
| Wisconsin Lutheran | 4-2 |
| UW-Oshkosh | 1-3 |
| UW-Stevens Point | 1-9 |
| UW-Whitewater | 0-1 |

ler Mazur during the 2012-13 season.

▶ Peterson leads the team in scoring at 14.8 points per game while shooting 57.6 percent from the floor. Peterson ranks seventh in all of NCAA Division III in 3-point shooting at 60.9 percent (14-23). In the last four games, Peterson is 14-for-19 (73.7 percent) from beyond the arc.

▶ Peterson also leads the Vikings in rebounding at 6.8 per game, and he's doing all this while averaging a modest 17.8 minutes per game.

▶ Senior forward Mitch Willer (Sussex, Wis./Sussex Hamilton) ranks second on the squad in both scoring and rebounding at 13.3 points and 6.5 rebounds per game. Willer is shooting a team-best 65.7 percent from the floor. He also is averaging a team-high 2.3 blocks per game and has nine this season.

▶ Junior guard Jeremy Stephani (Arlington Heights, Ill./Wheeling) is the other Viking in double figures at 11.8 points per game. Stephani also is pulling down 5.0 rebounds per game and is second on the team at 3.3 assists per game.

▶ Rookie guard Quinn Fisher (LaGrange, Ill./Fenwick) handed out a season-high 10 assists vs. Knox this past Saturday. Fisher, who leads the Vikings at 4.3 assists per game, is the first player with double-figure assists in a game since Brian Gryszkiewicz had 10 vs. Carroll in the 2012-13 season.

▶ Lawrence ranks second in the Midwest Conference in scoring defense at 70 points per game. The Vikings are seventh in scoring at 71.5 points per contest.

▶ Lawrence ranks first in the Midwest Conference in field goal percentage defense at 39.2 percent. The Vikings are fifth in the conference in field goal percentage at 45.5 percent.

Lawrence University Basketball Facts

| | |
|-----------------------------|---|
| Location | Appleton, Wis. |
| Founded | 1847 |
| Enrollment | 1,500 |
| President | Mark Burstein |
| Affiliation | NCAA Division III |
| Conference | Midwest Conference |
| Nickname | Vikings |
| School Colors | Blue and White |
| Home Arena | Alexander Gymnasium (1929, capacity 1,100) |
| Director of Athletics | Christyn Abaray |
| First season of basketball | 1896 |
| Seasons of basketball | 113 |
| All-time record | 974-1075 (.475) |
| Midwest Conference titles | 8 |
| | 1924-25, 1942-43, 1996-97, 2003-04, 2004-05, 2005-06, 2007-08, 2008-09 |
| MWC Tournament titles | 6 |
| | 1997, 2004, 2005, 2006, 2008, 2009 |
| NCAA Tournament appearances | 6 |
| | 1997, 2004, 2005, 2006, 2008, 2009 |

▶ Lawrence is shooting 37 percent from 3-point range, and that ranks third in the conference. The Vikings are second in the league in defending the 3-pointer at 33.7 percent.

▶ Lawrence leads the Midwest Conference in free-throw shooting at 79.2 percent (42-53). Opponents are shooting 72.7 percent from the line (64-88).

SCOUTING ST. NORBERT

▶ St. Norbert enters play this week ranked No. 8 in the D3hoops.com Top 25.

▶ The Green Knights pushed their Midwest Conference win streak to 66 games by sweeping Illinois College and Knox this past weekend. St. Norbert beat Illinois College 63-52 and stopped Knox 76-37.



1,000 POINT CLUB

| | | |
|-----------------|-------|-----------|
| Chris Braier | 1,565 | 2002-06 |
| Joel Dillingham | 1,554 | 1989-93 |
| Ryan Kroeger | 1,537 | 2005-09 |
| Jamie Nikitas | 1,406 | 2012-16 |
| Chris Siebert | 1,360 | 2010-14 |
| Doug Fyfe | 1,342 | 1972-76 |
| Adam LaVoy | 1,273 | 1997-2001 |
| Joel Ungrodt | 1,247 | 1961-64 |
| Matt Miota | 1,246 | 1987-91 |
| Joel DePagter | 1,243 | 1995-98 |
| Ben Zagorski | 1,175 | 1994-98 |
| Mike Fogel | 1,175 | 1975-79 |
| Reggie Geans | 1,160 | 1985-89 |
| John Dekker | 1,117 | 2006-10 |
| Shawn Koerner | 1,115 | 1985-89 |
| Richard Schultz | 1,088 | 1964-67 |
| Tom Steinmetz | 1,073 | 1963-66 |
| Jason Holinbeck | 1,051 | 2001-05 |
| Strat Warden | 1,042 | 1969-72 |
| Bob Townsend | 1,031 | 1966-69 |
| Jim Rasmussen | 1,030 | 1958-61 |
| Ryan DePouw | 1,028 | 2011-15 |
| Rob Cohen | 1,005 | 1976-80 |

▶ Junior guard D.J. DeValk is tops on the team in scoring at 20 points per game, and senior guard Ben Bobinski is second at 11.5.

▶ St. Norbert leads the Midwest Conference and ranks fourth in the nation in scoring defense at 56.8 points per game. The Green Knights are ninth in scoring at 69.3 points per game.

▶ The Green Knights are shooting 45.5 percent from the floor, good for sixth in the league. SNC is second in field goal percentage defense at 41.4 percent.

▶ SNC is shooting 35.7 percent from beyond the arc, good for fifth in the league. The Green Knights are fifth in defending the 3-pointer at 36 percent.

SCOUTING GRINNELL

▶ The Pioneers got their Midwest Conference season off to a 2-0 start with a 122-110 win over Beloit and a 117-112 victory over Lake Forest this past weekend.



▶ Julian Marx and Vinny Curta rank third and fourth, respectively, in all of NCAA Division III in scoring. Marx is at 29.9 points per game, and Curta is at 29.3.

▶ Grinnell leads the Midwest Conference and is second in the nation in scoring at 128.1 points per game. Greenville leads the nation at 131.6.

▶ Grinnell averages 19.7 3-pointers per game and that leads the nation. The Pioneers are shooting 35.1 percent from behind the arc, and Marx is the top 3-pointer shooter on the team. He has made 45 and is shooting 45.5 percent from 3-point range.

▶ Grinnell is allowing a league-worst 119.7 points per game, and opponents are shooting 59.4 percent against the Pioneers.

LAWRENCE'S POSTSEASON HISTORY

▶1997

Midwest Conference Tournament at Lawrence
Lawrence 83, Grinnell 82 (semifinals)
Lawrence 90, Knox 79 (championship)
NCAA Division III Tournament
Wabash 69, Lawrence 63 (first round at Wabash)

▶1998

Midwest Conference Tournament at Monmouth
Lawrence 79, Monmouth 68 (semifinals)
Ripon 73, Lawrence 60 (championship)

▶2000

Midwest Conference Tournament at Lake Forest
Lawrence 67, Lake Forest 61 (semifinals)
Ripon 85, Lawrence 54 (championship)

▶2003

Midwest Conference Tournament at Grinnell
Illinois College 86, Lawrence 77 OT (semifinals)

▶2004

Midwest Conference Tournament at Lawrence
Lawrence 68, Lake Forest 63 (semifinals)
Lawrence 82, Carroll 71 (championship)
NCAA Division III Tournament
Lawrence 86, Lakeland 51 (first round at Lawrence)
Lawrence 72, Buena Vista 66 (second round at Buena Vista)
Lawrence 86, Sul Ross State 79 OT (Sweet 16 at Puget Sound)
UW-Stevens Point 82, Lawrence 81 OT (Elite Eight at Puget Sound)
*UW-Stevens Point won NCAA title

▶2005

Midwest Conference Tournament at Lawrence
Lawrence 87, Carroll 76 (semifinals)
Lawrence 82, Ripon 77 OT (championship)
NCAA Division III Tournament
Lawrence 70, Gustavus Adolphus 56 (first round at Gustavus)
UW-Stevens Point 79, Lawrence 45 (second round at UW-Stevens Point)
*UW-Stevens Point won NCAA title

▶2006

Midwest Conference Tournament at Lawrence
Lawrence 88, Knox 62 (semifinals)
Lawrence 68, Carroll 62 (championship)
NCAA Division III Tournament
Lawrence 63, St. Thomas 59 (second round at Lawrence)
Illinois Wesleyan 71, Lawrence 68 (Sweet 16 at Lawrence)

▶2008

Midwest Conference Tournament at Lawrence
Lawrence 59, St. Norbert 58 (semifinals)
Lawrence 98, Carroll 95 OT (championship)
NCAA Division III Tournament
Wheaton 93, Lawrence 83 OT (first round at UW-Whitewater)

▶2009

Midwest Conference Tournament at Grinnell
Lawrence 90, Carroll 66 (semifinals)
Lawrence 88, Grinnell 69 (championship)
NCAA Division III Tournament
Washington University 67, Lawrence 65 (first round at Elmhurst)
*Washington University won NCAA title

2016-17 Lawrence University Basketball
Lawrence University Combined Team Statistics (as of Dec 05, 2016)
All games

Overall record: 2-2 Conf: 2-0 Home: 0-1 Away: 2-1 Neutral: 0-0

| # | Player | gp-gs | min | avg | Total | | 3-Point | | F-Throw | | Rebounds | | | | pf | dq | a | to | blk | stl | pts | avg | |
|----------------|--------------------|-------|-----|------|---------|-------|---------|-------|---------|-------|----------|-----|-----|------|----|----|----|----|-----|-----|-----|------|--|
| | | | | | fg-fga | fg% | 3fg-fga | 3fg% | ft-fa | ft% | off | def | tot | avg | | | | | | | | | |
| 32 | Ben Peterson | 4-1 | 71 | 17.8 | 19-33 | .576 | 14-23 | .609 | 7-9 | .778 | 4 | 23 | 27 | 6.8 | 13 | 1 | 6 | 5 | 3 | 1 | 59 | 14.8 | |
| 04 | Mitch Willer | 4-4 | 106 | 26.5 | 23-35 | .657 | 0-2 | .000 | 7-9 | .778 | 8 | 18 | 26 | 6.5 | 12 | 0 | 2 | 6 | 9 | 0 | 53 | 13.3 | |
| 12 | Jeremy Stephani | 4-4 | 120 | 30.0 | 16-44 | .364 | 10-32 | .313 | 5-6 | .833 | 5 | 15 | 20 | 5.0 | 8 | 0 | 13 | 7 | 0 | 2 | 47 | 11.8 | |
| 02 | Quinn Fisher | 4-4 | 96 | 24.0 | 14-30 | .467 | 7-16 | .438 | 2-3 | .667 | 2 | 3 | 5 | 1.3 | 7 | 0 | 17 | 12 | 0 | 6 | 37 | 9.3 | |
| 23 | Peter Winslow | 4-3 | 120 | 30.0 | 10-26 | .385 | 5-15 | .333 | 4-4 | 1.000 | 5 | 14 | 19 | 4.8 | 8 | 0 | 11 | 4 | 3 | 4 | 29 | 7.3 | |
| 24 | Connor Weas | 4-4 | 81 | 20.3 | 6-15 | .400 | 2-10 | .200 | 4-5 | .800 | 4 | 6 | 10 | 2.5 | 8 | 0 | 5 | 4 | 0 | 0 | 18 | 4.5 | |
| 11 | Evan McLaughlin | 3-0 | 43 | 14.3 | 4-7 | .571 | 0-1 | .000 | 4-4 | 1.000 | 1 | 2 | 3 | 1.0 | 5 | 0 | 2 | 6 | 2 | 1 | 12 | 4.0 | |
| 10 | Eric Weiss | 3-0 | 31 | 10.3 | 4-8 | .500 | 1-3 | .333 | 0-0 | .000 | 0 | 3 | 3 | 1.0 | 3 | 0 | 7 | 0 | 0 | 2 | 9 | 3.0 | |
| 35 | Joe Duero | 1-0 | 5 | 5.0 | 1-1 | 1.000 | 1-1 | 1.000 | 0-0 | .000 | 0 | 2 | 2 | 2.0 | 1 | 0 | 0 | 0 | 0 | 0 | 3 | 3.0 | |
| 01 | George Mavrakis | 3-0 | 28 | 9.3 | 2-8 | .250 | 0-1 | .000 | 3-3 | 1.000 | 0 | 5 | 5 | 1.7 | 0 | 0 | 2 | 3 | 0 | 0 | 7 | 2.3 | |
| 21 | Chase Kruger | 1-0 | 4 | 4.0 | 1-1 | 1.000 | 0-0 | .000 | 0-0 | .000 | 0 | 0 | 0 | 0.0 | 0 | 0 | 0 | 0 | 0 | 0 | 2 | 2.0 | |
| 05 | Abhishek Venkatesh | 4-0 | 60 | 15.0 | 2-13 | .154 | 0-3 | .000 | 3-4 | .750 | 0 | 1 | 1 | 0.3 | 5 | 0 | 5 | 2 | 0 | 0 | 7 | 1.8 | |
| 15 | Jason Dougherty | 4-0 | 20 | 5.0 | 0-2 | .000 | 0-0 | .000 | 3-6 | .500 | 1 | 1 | 2 | 0.5 | 4 | 0 | 0 | 1 | 0 | 0 | 3 | 0.8 | |
| 30 | Owen Mitchell | 1-0 | 3 | 3.0 | 0-1 | .000 | 0-1 | .000 | 0-0 | .000 | 0 | 0 | 0 | 0.0 | 0 | 0 | 0 | 1 | 0 | 0 | 0 | 0.0 | |
| 13 | Tyler Klug | 3-0 | 12 | 4.0 | 0-0 | .000 | 0-0 | .000 | 0-0 | .000 | 1 | 2 | 3 | 1.0 | 2 | 0 | 1 | 6 | 0 | 0 | 0 | 0.0 | |
| 14 | Jacob Krumberger | 1-0 | 3 | 3.0 | 0-0 | .000 | 0-0 | .000 | 0-0 | .000 | 0 | 1 | 1 | 1.0 | 2 | 0 | 0 | 1 | 0 | 0 | 0 | 0.0 | |
| Team | | | | | | | | | | | 5 | 8 | 13 | | | | | | | | | | |
| Total..... | | 4 | 803 | | 102-224 | .455 | 40-108 | .370 | 42-53 | .792 | 36 | 104 | 140 | 35.0 | 78 | 1 | 71 | 58 | 17 | 16 | 286 | 71.5 | |
| Opponents..... | | 4 | 799 | | 94-240 | .392 | 28-83 | .337 | 64-88 | .727 | 52 | 92 | 144 | 36.0 | 63 | - | 56 | 40 | 8 | 30 | 280 | 70.0 | |

TEAM STATISTICS

| | LU | OPP |
|------------------------|---------|--------|
| SCORING | 286 | 280 |
| Points per game | 71.5 | 70.0 |
| Scoring margin | +1.5 | - |
| FIELD GOALS-ATT | 102-224 | 94-240 |
| Field goal pct | .455 | .392 |
| 3 POINT FG-ATT | 40-108 | 28-83 |
| 3-point FG pct | .370 | .337 |
| 3-pt FG made per game | 10.0 | 7.0 |
| FREE THROWS-ATT | 42-53 | 64-88 |
| Free throw pct | .792 | .727 |
| F-Throws made per game | 10.5 | 16.0 |
| REBOUNDS | 140 | 144 |
| Rebounds per game | 35.0 | 36.0 |
| Rebounding margin | -1.0 | - |
| ASSISTS | 71 | 56 |
| Assists per game | 17.8 | 14.0 |
| TURNOVERS | 58 | 40 |
| Turnovers per game | 14.5 | 10.0 |
| Turnover margin | -4.5 | - |
| Assist/turnover ratio | 1.2 | 1.4 |
| STEALS | 16 | 30 |
| Steals per game | 4.0 | 7.5 |
| BLOCKS | 17 | 8 |
| Blocks per game | 4.3 | 2.0 |
| ATTENDANCE | 872 | 1032 |
| Home games-Avg/Game | 1-872 | 3-344 |
| Neutral site-Avg/Game | - | 0-0 |

| Date | Opponent | | Score | Att. |
|------------|-----------------------|---|-------|------|
| 11/16/16 | at Wisconsin Lutheran | L | 68-76 | 312 |
| 11/26/16 | UW-STEVENS POINT | L | 50-69 | 872 |
| * 12/02/16 | at Illinois College | W | 78-70 | 470 |
| * 12/03/16 | at Knox College | W | 90-65 | 250 |

* - Conference game

| Score by Periods | 1st | 2nd | Totals |
|---------------------|-----|-----|--------|
| Lawrence University | 145 | 141 | 286 |
| Opponents | 125 | 155 | 280 |

2016-17 Lawrence University Basketball
Lawrence University Points-Rebounds-Assists (as of Dec 05, 2016)
All games

| Opponent | Date | Score | | 01 | 02 | 04 | 05 | 10 | 11 | 12 |
|-----------------------|----------|-------|---|------------|------------|------------|------------|------------|------------|------------|
| | | | | MAVRAKIS,G | FISHER,QUI | WILLER,MIT | VENKATESH, | WEISS,ERIC | MCLAUGHLIN | STEPHANI,J |
| at Wisconsin Lutheran | 11/16/16 | 68-76 | L | DNP | 8-4-3 | 12-3-0 | 0-0-0 | 4-1-2 | 10-1-1 | 16-6-3 |
| UW-STEVENS POINT | 11/26/16 | 50-69 | L | 0-0-1 | 7-0-2 | 10-8-1 | 4-1-2 | 0-0-1 | 0-0-1 | 7-4-3 |
| at Illinois College | 12/02/16 | 78-70 | w | 2-2-0 | 13-1-2 | 14-9-1 | 2-0-0 | 5-2-4 | 2-2-0 | 13-6-4 |
| at Knox College | 12/03/16 | 90-65 | w | 5-3-1 | 9-0-10 | 17-6-0 | 1-0-3 | DNP | DNP | 11-4-3 |

| Opponent | Date | Score | | 13 | 14 | 15 | 21 | 23 | 24 | 30 |
|-----------------------|----------|-------|---|------------|------------|------------|------------|------------|------------|------------|
| | | | | KLUG,TYLER | KRUMBERGER | DOUGHERTY, | KRUGER,CHA | WINSLOW,PE | WEAS,CONNO | MITCHELL,O |
| at Wisconsin Lutheran | 11/16/16 | 68-76 | L | 0-1-0 | DNP | 0-0-0 | DNP | 6-5-6 | 7-5-0 | DNP |
| UW-STEVENS POINT | 11/26/16 | 50-69 | L | 0-0-0 | DNP | 0-1-0 | DNP | 6-2-1 | 2-1-1 | DNP |
| at Illinois College | 12/02/16 | 78-70 | w | DNP | DNP | 2-1-0 | DNP | 8-4-2 | 6-2-3 | DNP |
| at Knox College | 12/03/16 | 90-65 | w | 0-2-1 | 0-1-0 | 1-0-0 | 2-0-0 | 9-8-2 | 3-2-1 | 0-0-0 |

| Opponent | Date | Score | | 32 | 35 |
|-----------------------|----------|-------|---|------------|-----------|
| | | | | PETERSON,B | DUERO,JOE |
| at Wisconsin Lutheran | 11/16/16 | 68-76 | L | 5-8-2 | DNP |
| UW-STEVENS POINT | 11/26/16 | 50-69 | L | 14-5-1 | DNP |
| at Illinois College | 12/02/16 | 78-70 | w | 11-4-1 | DNP |
| at Knox College | 12/03/16 | 90-65 | w | 29-10-2 | 3-2-0 |