



# Lawrence University (1-1, 0-0 MWC)

vs.

# Carroll University (3-1, 1-0 MWC)

# Mount Mary University (0-5)

Wednesday, Dec. 4, 7:30 p.m.; Thursday, Dec. 5, 7 p.m.

Alexander Gymnasium, Appleton, Wis.



## 2013-14 LAWRENCE SCHEDULE

Date	Opponent	Time/Res.
<b>11/16</b>	<b>Eureka</b>	<b>L, 51-48</b>
11/22	at Mount Mary	W, 78-44
<b>12/4</b>	<b>Carroll</b>	<b>7:30 pm</b>
<b>12/5</b>	<b>Mount Mary</b>	<b>7:00 pm</b>
12/11	at Cornell	7:30 pm
12/14	at Knox	3:00 pm
<b>12/16</b>	<b>Illinois College</b>	<b>7:00 pm</b>
12/19	at Finlandia	1:00 pm
<b>1/2</b>	<b>Finlandia</b>	<b>1:00 pm</b>
1/4	at St. Norbert	3:00 pm
<b>1/11</b>	<b>Ripon</b>	<b>3:00 pm</b>
1/14	at Lake Forest	7:30 pm
<b>1/18</b>	<b>Grinnell</b>	<b>3:00 pm</b>
1/22	at Ripon	7:30 pm
<b>1/25</b>	<b>Knox</b>	<b>3:00 pm</b>
1/28	at Carroll	7:30 pm
<b>2/1</b>	<b>Monmouth</b>	<b>3:00 pm</b>
<b>2/5</b>	<b>St. Norbert</b>	<b>7:30 pm</b>
2/8	at Illinois College	3:00 pm
2/12	at Beloit	7:30 pm
<b>2/15</b>	<b>Cornell</b>	<b>5:00 pm</b>
<b>2/19</b>	<b>Lake Forest</b>	<b>7:30 pm</b>
2/22	at Grinnell	3:00 pm
2/28-3-1	MWC Tournament	TBA

Home games in bold

## PROBABLE STARTERS

### Lawrence



Forward	Kassidy Rinehart	Jr.	5-9
Forward	Katie Schumacher	So.	5-11
Forward	Andrea Wilkinson	So.	6-0
Guard	Alex Deshler	Sr.	5-8
Guard	Kanae Nishitani	Fr.	5-5

### Carroll



Forward	Emily DeNoyer	Sr.	5-9
Forward	Mallory Christenson	So.	5-10
Center	Breann Maryanski	So.	6-0
Guard	Corrine Engels	Jr.	5-7
Guard	Julie Piech	Jr.	5-10

### Mount Mary



Forward	Taylor Baumgart	Fr.	5-11
Forward	Ashley Leverenz	Sr.	6-2
Guard	Shandrieka Richardson	So.	5-4
Guard	Emily Barker	Sr.	5-5
Guard	Yolanda Coleman	So.	5-3

## SCHEDULE

Wednesday's game vs. Carroll tips off at 7:30 p.m. as the second game of the Midwest Conference doubleheader. Thursday's game vs. Mount Mary is set for 7 p.m.

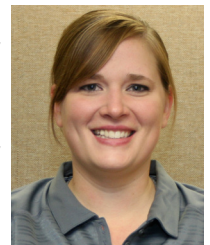
## VIDEO WEBCAST

Both games will be webcast with Dick Knapinski on the call. The games can be viewed at: <http://client.stretchinternet.com/client/lawrence.portal?mode=link#>. A link for the broadcasts is on the Lawrence women's basketball page.

## THE COACHES

Ashley Wellman (Alma 2008) is in her first season at Lawrence. Kris Jacobsen (UW-Platteville 1989) is in her 16th season at Carroll and has a

record of 219-144 (.603). Marc Heidorf (UW-Oshkosh 1998) is in his first season at Mount Mary. Heidorf is in his fifth season overall and has a record of 19-73 (.207).



Ashley Wellman

## THE SERIES

▶Carroll holds a 23-20 lead in the series with Lawrence, which dates back to the 1990-91 season. The Pioneers have won 15 in a row against the Vikings.

▶Lawrence holds an 11-1 lead in the series with the Blue Angels. The teams met for the first time in the 1976-77 season and last played in 2009-10 campaign. Lawrence has won the last three games with Mount Mary.

## LAST MEETING vs. CARROLL

Carroll held Lawrence scoreless in overtime to post a 60-52 Midwest Conference victory over the Vikings on Jan. 23, 2013, at Alexander Gymnasium

Hilary Arthur paced Carroll with a double-double of 10 points and 10 rebounds. Kelly Menden led Carroll in scoring with 12 points.

Alex Deshler paced the Vikings with 15 points, and Amber Lisowe added 13 points. Patsy Kealey tied for game-high honors with 10 rebounds for the Vikings and posted four blocks.

Lawrence opened the second half with a 12-3 run to grab a 26-22 lead with 14:57 left, and the Vikings pressed that lead to as many eight points. The Vikings were up 48-40 after Kealey's jumper with 3:40 left, but Carroll rallied in the final three minutes.

The Pioneers scored seven consecutive points, capped by Menden's 3-pointer with 56 seconds left, to tie the game at 50-50. After the Vikings missed a pair of layups, Menden grabbed the rebound and was fouled with 16 seconds remaining.

Menden made both free throws, but Deshler converted a tough layup with six seconds left to tie it at 52-52. Corrine Engels missed a jumper at the buzzer and the game went to overtime.

The Vikings went cold in the extra period and missed all six of their shots from the floor. Carroll also went 0-for-6 from the floor, but the Pioneers went 8-for-8 from the foul line to pull out the victory.

## LAST GAME

Lawrence played a strong second half and cruised to a 78-44 nonconference victory over Mount Mary on Nov. 22 at the Bloechl Center.

Kassidy Rinehart had a double-double with 20 points and 10 rebounds to lead Lawrence. Rinehart also had six assists and six steals. Freshman guard Kanae Nishitani had a double-double with 10 points and 10 assists, which was just two shy of



### MWC Standings

	MWC		Overall	
	W	L	W	L
Ripon	3	0	3	3
Illinois College	2	0	3	3
Carroll	1	0	3	1
Beloit	1	1	1	3
Cornell	0	0	3	1
St. Norbert	0	0	3	1
Lawrence	0	0	1	1
Knox	0	0	1	3
Monmouth	0	2	3	2
Grinnell	0	2	0	4
Lake Forest	0	2	0	6

### Games Wednesday

Carroll at Lawrence

Beloit at Loras

Monmouth at Grinnell

Lake Forest at St. Norbert

Cornell at Knox

### Game Thursday

Mount Mary at Lawrence

### Games Saturday

Beloit at Monmouth

St. Norbert at Grinnell

Illinois College at Ripon

Carroll at Cornell

Knox at Lake Forest

tying the Lawrence game record.

It also was the first coaching victory for Lawrence coach Ashley Wellman, who is in her rookie season with the Vikings.

Katie Schumacher and Alex Deshler added 13 points apiece for the Vikings.

Taylor Baumgart scored 18 points and Ashley Leverenz added 14 points to pace Mount Mary.

Lawrence led 12-10 midway through the first half when the Vikings scored seven consecutive points, capped by a Rinehart free throw, to take a 19-10 edge with 7:35 left.

The Vikings would go on to lead 30-23 at the break, but Mount Mary scored the first six points of the second half to cut the lead to 30-29 at the 18:41 mark.

Lawrence led 34-33 when the Vikings went on a 17-6 run to take command. Rinehart scored six points and Andrea Wilkinson had five during the run that gave Lawrence a 51-39 lead with 10:06 left.

The Vikings then went on a 23-2 run to finish the game as Lawrence held the Blue Angels without a field goal over the final 7:48.

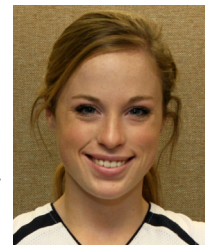
Lawrence held Mount Mary to just 25.9 percent shooting (7-27) in the second half while the Vikings shot 50 percent (19-38) from the floor after the break.

## VIKINGS UPDATE

►Lawrence's win at Mount Mary was the first in the coaching career of Ashley Wellman. She is in her first season at the helm of the Vikings.



►Junior guard Kassidy Rinehart (Hortonville, Wis./Hortonville) turned in a career game in Lawrence's victory at Mount Mary. Rinehart set career highs in points, rebounds,



Kassidy Rinehart

assists and steals against the Blue Angels. Rinehart recorded her first career double-double with 20 points and 10 rebounds. That eclipsed her previous highs of 15 points and nine rebounds, which she set last season. Rinehart also had six assists and six steals, which topped her previous highs of four assists and five steals, also set last season. Rinehart ranks second in the conference at 3.5 steals per game.

►Freshman guard Kanae Nishitani (Kanagawa, Japan/Yamate Gakuin)

also had a double-double against Mount Mary. She recorded 10 points and 10 assists against the Blue Angels. The 10 assists ties the fifth-highest game total in school history and was just two shy of tying the school record. Nishitani ranks first in the conference at 5.5 assists per game.

►Nishitani leads the Vikings in scoring and ranks 11th in the Midwest Conference at 13.5 points per contest. Rinehart also is averaging in double figures at 11.0 points per game, and senior guard Alex Deshler (La Crosse, Wis./Aquinas) is at 9.5 per game.



*Kanae Nishitani*

►Lawrence has two of the top five rebounders in the Midwest Conference. Sophomore forward Andrea Wilkinson (Racine, Wis./Lutheran) ranks fourth at 9.0 rebounds per game, and Rinehart is fifth at 8.5 per contest.



*Andrea Wilkinson*

►Lawrence ranks first in the conference in rebounding margin at plus-11.0.

►After just two games, Lawrence is 10th in the conference in scoring offense at 63.0 points per game, but the Vikings are second in scoring defense at 47.5 points per contest.

►The 44 points allowed by the Vikings is the lowest total for an opponent since Ripon scored 43 in the third game of the 2012-13 season.

►Lawrence is ninth in the league in field goal percentage at 36.7 percent. The Vikings rank first in field goal percentage defense at 28.3 percent.

►Lawrence is seventh in 3-point

## Lawrence University Basketball Facts

Location	Appleton, Wis.
Founded	1847
Enrollment	1,450
President	Mark Burstein
Affiliation	NCAA Division III
Conference	Midwest Conference
Nickname	Vikings
School Colors	Blue and White
Home Arena	Alexander Gymnasium (1929, capacity 1,100)
Director of Athletics	Mike Szkodzinski
First season of basketball	1975-76
Seasons of basketball	38
All-time record	352-443 (.443)
Midwest Conference titles	2
1989-90, 1998-99	
Lake Michigan Conference titles	1
1988-89	
NCAA tournament appearances	1
1999	

shooting at 21.7 percent, and Lawrence is first in defending the 3-point-er at 12.9 percent. Teams have hit just 4 of 31 3-pointers against Lawrence this season.

### SCOUTING CARROLL

►Carroll is coming off a 79-68 victory over Lake Forest in its Midwest Conference opener. Emily DeNoyer poured in 23 points and Corrine Engels added 21 to lead the Pioneers to the win. Carroll was in command in the second half as Lake Forest never got closer than seven points late in the game.

►Emily DeNoyer is tops on the team in scoring and ranks seventh in the Midwest Conference at 15.3 points per game. Corrine Engels also is in double figures at 13.5 points per contest. Engels also leads the squad and is 10th in the conference at 3.3 assists per



game.

►Breann Maryanski leads the team and ranks third in the league in rebounding at 9.8 boards per game.

►Carroll ranks eighth in the league in scoring offense at 66.8 points per game, and the Pioneers are third in scoring defense at 60.0.

►Carroll is shooting 44.1 percent from the floor, and that ranks second in the Midwest Conference. The Pioneers are seventh in field goal percentage defense at 41.6 percent.

►Carroll is shooting 29.3 percent from beyond the arc, and that is fifth in the league. The Pioneers are fourth in 3-point field goal percentage defense at 24.1 percent.

### SCOUTING MOUNT MARY

►Mount Mary dropped a 69-40 decision to North Central (Minn.)



on Nov. 26 despite a huge game from Ashley Leverenz. She posted a double-double with 14 points and 15 rebounds against North Central. Taylor Baumgart led Mount Mary in scoring with 15 points.

►Mount Mary is coached by first-year mentor Marc Heidorf. He should be a familiar face to Lawrence fans. Heidorf coached at Lawrence for the 2008-09 and 2009-10 seasons. He finished with a record of 3-43 with the Vikings before heading out to coach at the University of Maine-Presque Isle. Heidorf put together a 16-27 record at Presque Isle. Heidorf also serves as the director of athletics at Mount Mary.

►Taylor Baumgart leads the team in scoring and is one of three Blue

Angels averaging double figures in points. Baumgart is tops on the team at 13.4 points per game, followed by Ashley Leverenz at 12.2 points per game and Emily Barker at 10.4

►Leverenz also is tops on the squad at 8.4 rebounds per game, and she is averaging 1.6 blocks per contest.

►Mount Mary is a NCAA Division III institution, but the Blue Angels are currently a school without a conference. Mount Mary competes as an independent.

►Mount Mary is an all women's school and sponsors only six intercollegiate sports, basketball, tennis, volleyball, soccer, cross country and softball.



### D3HOOPS.COM TOP 25

Rnk	Team	Rec.	Pts.	Pr.
1.	DePauw (24)	6-0	624	1
2.	Washington U.	4-1	562	2
3.	Montclair State (1)	4-0	557	4
4.	Amherst	4-0	538	5
5.	Whitman	6-0	515	6
6.	Hope	6-0	468	7
7.	Thomas More	5-0	450	8
8.	Tufts	5-0	402	9
9.	UW-Whitewater	5-1	397	3
10.	St. Thomas	2-1	381	10
11.	Ohio Northern	4-0	363	12
12.	George Fox	4-0	322	15
13.	Williams	6-0	321	13
14.	Emory	4-0	313	14
15.	Christopher Newport	4-1	299	11
16.	Carthage	5-1	235	16
17.	FDU-Florham	6-0	232	17
18.	Randolph-Macon	6-0	201	19
19.	Wheaton (Ill.)	5-1	195	24
20.	Rhodes	4-0	175	20
21.	Ithaca	3-1	155	18
22.	UW-Stevens Point	4-1	113	21
23.	Juniata	5-0	72	23
23.	Trinity (Texas)	6-1	52	25
24.	Texas-Dallas	5-0	43	--

**Dropped out:** No. 22 Simpson.

**Others receiving votes:** York (Pa.) 37; UW-Oshkosh 20; Baldwin Wallace 17; Cornell 15; Bowdoin 11; Geneseo State 10; St. Benedict 6; Simpson 5; Moravian 5; Mount Union 4; Louisiana College 3; Calvin 2; Haverford 2; Lewis and Clark 1; University of New England 1.

**2013-14 Lawrence Basketball**  
**Lawrence University Combined Team Statistics (as of Dec 03, 2013)**  
**All games**

<b>RECORD:</b>	<b>OVERALL</b>	<b>HOME</b>	<b>AWAY</b>	<b>NEUTRAL</b>
<b>ALL GAMES.....</b>	<b>(1-1)</b>	<b>(0-1)</b>	<b>(1-0)</b>	<b>(0-0)</b>
<b>CONFERENCE.....</b>	<b>(0-0)</b>	<b>(0-0)</b>	<b>(0-0)</b>	<b>(0-0)</b>
<b>NON-CONFERENCE.....</b>	<b>(1-1)</b>	<b>(0-1)</b>	<b>(1-0)</b>	<b>(0-0)</b>

##	Player	GP-GS	Min--Avg	---TOTAL---		---3-PTS---		FT-FTA	Pct	---REBOUNDS---				PF	FO	A	TO	Blk	Stl	Pts	Avg
				FG-FGA	Pct	3FG-FGA	Pct			Off	Def	Tot	Avg								
20	Kanae Nishitani....	2-2	73 36.5	10-32	.313	3-13	.231	4-5	.800	3	3	6	3.0	7	0	11	15	0	5	27	13.5
14	Kassidy Rinehart...	2-2	61 30.5	9-24	.375	0-0	.000	4-12	.333	5	12	17	8.5	7	1	7	6	0	7	22	11.0
12	Alex Deshler.....	2-2	64 32.0	8-23	.348	1-7	.143	2-2	1.000	2	10	12	6.0	4	0	6	5	0	3	19	9.5
40	Katie Schumacher...	2-2	61 30.5	7-20	.350	0-0	.000	3-6	.500	9	3	12	6.0	5	0	2	6	1	2	17	8.5
23	Andrea Wilkinson...	2-2	57 28.5	6-14	.429	0-0	.000	5-7	.714	5	13	18	9.0	7	0	0	2	3	2	17	8.5
02	Patsy Kealey.....	2-0	37 18.5	5-11	.455	1-3	.333	0-0	.000	2	11	13	6.5	5	0	1	3	1	1	11	5.5
32	Margaret Johnson...	2-0	15 7.5	3-7	.429	0-0	.000	1-2	.500	0	2	2	1.0	3	0	0	0	0	0	7	3.5
21	Courtney Schmidt...	2-0	19 9.5	2-5	.400	0-0	.000	0-0	.000	0	4	4	2.0	1	0	2	2	0	0	4	2.0
42	Jeannine Schulz....	2-0	10 5.0	1-3	.333	0-0	.000	0-1	.000	0	1	1	0.5	0	0	1	3	0	0	2	1.0
22	Bethany Hoster.....	1-0	3 3.0	0-0	.000	0-0	.000	0-0	.000	1	0	1	1.0	1	0	0	0	0	0	0	0.0
<b>TEAM.....</b>										10	8	18	9.0	0			1				
<b>Total.....</b>		2	400	51-139	.367	5-23	.217	19-35	.543	37	67	104	52.0	40	1	30	43	5	20	126	63.0
<b>Opponents.....</b>		2	400	32-113	.283	4-31	.129	27-46	.587	21	61	82	41.0	37	-	20	42	9	18	95	47.5

TEAM STATISTICS	LU	OPP	DATE	OPPONENT	W/L	SCORE	ATTEND
<hr/>							
SCORING.....	126	95	11/16/13	EUREKA COLLEGE	L	48-51	221
Points per game.....	63.0	47.5	11/22/13	at Mount Mary University	W	78-44	170
Scoring margin.....	+15.5	-					
FIELD GOALS-ATT.....	51-139	32-113					
Field goal pct.....	.367	.283					
3 POINT FG-ATT.....	5-23	4-31					
3-point FG pct.....	.217	.129					
3-pt FG made per game..	2.5	2.0					
FREE THROWS-ATT.....	19-35	27-46					
Free throw pct.....	.543	.587					
REBOUNDS.....	104	82					
Rebounds per game.....	52.0	41.0					
Rebounding margin.....	+11.0	-					
ASSISTS.....	30	20					
Assists per game.....	15.0	10.0					
TURNOVERS.....	43	42					
Turnovers per game.....	21.5	21.0					
Turnover margin.....	-0.5	-					
Assist/turnover ratio..	0.7	0.5					
STEALS.....	20	18					
Steals per game.....	10.0	9.0					
BLOCKS.....	5	9					
Blocks per game.....	2.5	4.5					
WINNING STREAK.....	1	-					
Home win streak.....	0	-					
ATTENDANCE.....	221	170					
Home games-Avg/Game....	1-221	1-170					
Neutral site-Avg/Game..	-	0-0					

SCORE BY PERIODS:	1st	2nd	Total
<hr/>			
Lawrence University.....	51	75	- 126
Opponents.....	48	47	- 95

**2013-14 Lawrence Basketball**  
**Lawrence University Game-by-Game Points-Rebounds-Assists (as of Dec 03, 2013)**  
**All games**

Opponent	Date	Score	Player Statistics									
			02	12	14	20	21	22	23	32	40	
			WL	KEALEY, PA	DESHLER, A	RINEHART,	NISHITANI	SCHMIDT, C	HOSTER, BE	WILKINSON	JOHNSON, M	SCHUMACHE
EUREKA COLLEGE	11/16/13	48-51	L	7- 9- 1	6- 9- 2	2- 7- 1	17- 4- 1	0- 0- 0	DNP	10-12- 0	0- 0- 0	4- 8- 1
at Mount Mary Universit	11/22/13	78-44	W	4- 4- 0	13- 3- 4	20-10- 6	10- 2-10	4- 4- 2	0- 1- 0	7- 6- 0	7- 2- 0	13- 4- 1

Opponent	Date	Score	Player Statistics	
			42	WL
			WL	SCHULZ, JE
EUREKA COLLEGE	11/16/13	48-51	L	2- 0- 1
at Mount Mary Universit	11/22/13	78-44	W	0- 1- 0

## 2013-14 Game Recaps

**November 16**

**Eureka 51, Lawrence 48**

APPLETON, Wis.

— The Lawrence University women's basketball team missed a game-tying 3-pointer at the buzzer, and Eureka College hung on for a 51-48 nonconference victory in the season opener at Alexander Gymnasium.



Kelsey Shoemake posted a double-double for Eureka (1-0) with 15 points and 11 rebounds.

Andrea Wilkinson had her first career double-double for the Vikings (0-1) with 10 points and 12 rebounds. Kanae Nishitani led Lawrence and all scorers with 17 points and also picked up a team-high three steals.

Eureka led by as many as seven points in the first half, but the Vikings rallied early in the second half to tie the game at 25-25. The teams swapped the lead, and Lawrence took its final lead at 41-40 on Katie Schumacher's layup with 4:54 left.

The Red Devils led by three at 46-43 when Nishitani was whistled for a foul against Caty Eeten. Eeten missed both free throws, but Lawrence was called for another foul boxing out Eeten. Given another chance, she made both free throws to give the Red Devils a 48-43 lead with 56 seconds left.

Nishitani drove to the basket, scored and was fouled. She converted the three-point play to cut the margin to 48-46. After Jenna Brooks converted 1 of 2 free throws, Patsy Kealey hit a driving layup to cut the margin to 49-48 with 28 seconds left.

Brooks was fouled again and converted both free throws with eight seconds left to put the Red Devils up 51-48. The Vikings broke the Eureka press and found an open Alex Deshler in the corner, but her 3-pointer was off the mark at the buzzer.

**November 22**

**Lawrence 78, Mount Mary 44**

MILWAUKEE,

Wis. — The Lawrence University women's basketball team played



a strong second half and cruised to a 78-44 nonconference victory over Mount Mary University at the Bloechl Center.

Kassidy Rinehart had a double-double with 20 points and 10 rebounds to lead Lawrence (1-1). Rinehart also had six assists and six steals. Freshman guard Kanae Nishitani had a double-double with 10 points and 10 assists, which was just two shy of tying the Lawrence game record.

It also was the first coaching victory for Lawrence coach Ashley Wellman, who is in her rookie season with the Vikings.

Katie Schumacher and Alex Deshler added 13 points apiece for the Vikings.

Taylor Baumgart scored 18 points and Ashley Leverenz added 14 points to pace Mount Mary (0-3).

Lawrence led 12-10 midway through the first half when the Vikings scored seven consecutive points, capped by a Rinehart free throw, to take a 19-10 edge with 7:35 left.

The Vikings would go on to lead 30-23 at the break, but Mount Mary scored the first six points of the second half to cut the lead to 30-29 at the 18:41 mark.

Lawrence led 34-33 when the Vikings went on a 17-6 run to take command. Rinehart scored six points and Andrea Wilkinson had five during the run that gave Lawrence a 51-39 lead with 10:06 left.

The Vikings then went on a 23-2 run to finish the game as Lawrence held the Blue Angels without a field goal over the final 7:48.

Lawrence held Mount Mary to just 25.9 percent shooting (7-27) in the second half while the Vikings shot 50 percent (19-38) from the floor after the break.