



# Lawrence University (0-20)

vs.

# Maranatha Baptist University (2-14)

Monday, Feb. 16, 6:00 p.m.

Alexander Gymnasium, Appleton, Wis.



## 2014-15 LAWRENCE SCHEDULE

Date	Opponent	Time/Res.
11/15	at Concordia (Ill.)	L, 95-57
<b>11/19</b>	<b>Marian</b>	<b>L, 61-38</b>
<b>11/22</b>	<b>Ripon</b>	<b>L, 41-40</b>
<b>12/3</b>	<b>Beloit</b>	<b>L, 51-31</b>
12/6	at Illinois College	L, 70-41
12/9	at Lake Forest	L, 52-37
12/13	vs. Whittier	L, 68-54
12/14	at UC-Santa Cruz	L, 57-35
1/3	at Grinnell	L, 63-48
<b>1/7</b>	<b>St. Norbert</b>	<b>L, 88-34</b>
1/10	at Monmouth	L, 96-41
<b>1/13</b>	<b>Carroll</b>	<b>L, 58-34</b>
<b>1/17</b>	<b>Cornell</b>	<b>L, 64-50</b>
1/21	at Ripon	L, 47-39
1/24	at Knox	L, 123-71
<b>1/27</b>	<b>Lake Forest</b>	<b>L, 77-43</b>
<b>1/31</b>	<b>Knox</b>	<b>L, 94-80</b>
2/4	at St. Norbert	L, 73-27
<b>2/7</b>	<b>Illinois College</b>	<b>L, 65-52</b>
2/10	at Beloit	L, 64-57
<b>2/16</b>	<b>Maranatha Baptist</b>	<b>6:00 pm</b>
2/18	at Carroll	5:30 pm
<b>2/21</b>	<b>Monmouth</b>	<b>1:00 pm</b>
2/27-28	MWC Tournament	TBA

Home games in bold

## PROBABLE STARTERS

### Lawrence



Forward	Andrea Wilkinson	Jr.	6-0
Forward	Elizabeth Arco	Fr.	6-1
Forward	Danelle Buck	Fr.	5-10
Guard	Natalie Kramer	Fr.	5-7
Guard	Patsy Kealey	Jr.	5-11

### Maranatha Baptist



Forward	Stacie Ross	Sr.	6-0
Forward	Emily Hinsenkamp	Jr.	6-1
Forward	Lexi Johnson	Fr.	5-10
Guard	Stacy Reinke	Jr.	5-11
Guard	Grace Harris	So.	5-6

## SCHEDULE

►The Vikings play their final nonconference game of the season on Monday when they host Maranatha Baptist at 6 p.m. at Alexander Gymnasium.

## VIDEO WEBCAST

►The game features a free video webcast and are available at: <http://portal.stretchinternet.com/lawrence/>. Dick Knapinski and Anthony Totoraitis are on the call for Lawrence home games. A link for the webcast is available on the Lawrence women's basketball page.

## THE COACHES

►Ashley Wellman (Alma 2008) is in her second season at Lawrence and has a record of 3-40 (.070).

►Clayton Morrison (UW-Whitewater) is in his 22nd season as the head coach at Maranatha Baptist.



Ashley Wellman

## THE SERIES

►Lawrence holds a 15-1 edge over Maranatha Baptist in a series that dates back to the Vikings' first season of basketball, 1975-76. Lawrence won the first 14 games in the series, and the teams haven't met since a 92-38 Lawrence victory during the 1989-90 season.

## LAST GAME

Beloit scored the final six points of the game and held off Lawrence 64-57 in a Midwest Conference game on Tuesday at Flood Arena.

Lana Wieseman led Beloit with 25 points, with most of those earned by going 14-for-16 at the foul line. Beloit went 29-for-39 from the stripe for the game.

Lawrence freshman Danelle Buck led the Vikings with a double-double of 19 points and 11 rebounds before fouling out. Fellow Lawrence freshman Elizabeth Arco added 13 points, five rebounds and three blocks.

The Vikings trailed by as many as 13 points in the second half before

rallying. Lawrence went on a 10-0 run by hitting four consecutive shots, including back-to-back 3-pointers from Patsy Kealey and Olivia Hoesley, to cut the lead to 42-39 with 12:11 left.

The Bucs pushed the lead back to back to as many as 10 points, and the Vikings were down 57-51 when Natalie Kramer sparked a mini-run with a jumper. After a Beloit free throw, Fanita Robins buried a jumper, and Kramer made a pair of free throws to trim the lead to 58-57 with 43 seconds left.

That's as close as the Vikings would get as they missed their next two shots from the floor. Beloit then went 6-for-6 from the foul line in the final 40 seconds to seal the victory.

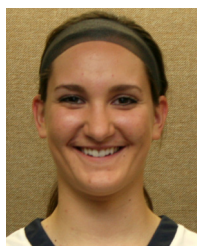
Lawrence jumped on the Bucs from the opening tip and led 17-5 on Buck's layup with 8:28 left in the first half. Beloit scored the game's next 10 points to cut the lead to 17-15. Lawrence led 19-18, but the Bucs scored the final five points of the half to grab a 23-19 edge at the break.

### VIKINGS UPDATE

▶ It will be a busy final week of the season for the Vikings. In addition to Monday's game against Maranatha Baptist, the Vikings finish the season with Midwest Conference at Carroll and vs. Monmouth.



▶ Freshman forward Danelle Buck (Newton, Wis./Valders) posted her second double-double of the season and the fourth by a Lawrence player. Buck scored a career-high 19 points and grabbed a career-high 11 rebounds against Beloit.



Danelle Buck

▶ Buck leads the team in scoring at 9.4 and has scored in double figures in two consecutive games and five of



### MWC Standings

	MWC		Overall	
	W	L	W	L
St. Norbert*	15	1	18	3
Carroll	11	4	14	6
Illinois College	10	5	13	7
Cornell	11	5	13	8
Lake Forest	10	6	11	10
Monmouth	7	8	8	12
Grinnell	7	8	9	11
Knox	7	8	9	11
Beloit	5	11	6	15
Ripon	2	13	2	18
Lawrence	0	16	0	20

\*Clinched MWC Tournament berth

### Games Saturday

- Grinnell at Lake Forest
- St. Norbert at Knox
- Carroll at Cornell
- Ripon at Illinois College
- Monmouth at Beloit

### Game Monday

- Maranatha Baptist at Lawrence

### Games Wednesday

- Lawrence at Carroll
- Knox at Grinnell
- Illinois College at Monmouth
- Beloit at Ripon

the last eight contests. Buck is shooting a team-best 43.4 percent from the floor and is second on the team at 5.4 rebounds per contest.

▶ It's been a block party lately for rookie forward Elizabeth Arco (Bartlett, Ill./Bartlett). Arco has blocked at least two shots in the last four games and eight of the previous 10 con-



Elizabeth Arco

tests. Arco has a team-best 22 blocks on the season and ranks fifth in the Midwest Conference at 1.4 blocks per game.

▶ Arco is second on the team in scoring at 8.9 points per game and leads the team at 5.8 rebounds per contest.

▶ Junior Patsy Kealey (New Rochelle, N.Y./Ursuline) and senior Kassidy Rinehart (Hortonville, Wis./Hortonville) are tops on the team at 1.8 assists per game. Kealey matched her season high with four assists against Beloit.



Patsy Kealey

▶ Rookie guard Olivia Hoesley (Eau Claire, Wis./North) is tops on the squad with 16 3-pointers this season, and Buck leads the squad by shooting 38.9 percent (7-for-18) from beyond the arc.



Olivia Hoesley

▶ The Vikings rank 11th in the Midwest Conference in scoring at 45.3 points per game. Lawrence is ninth in scoring defense at 70.4 points per contest.

▶ The Vikings are shooting 33.6 percent from the floor, which ranks ninth in the league. Lawrence is seventh in field goal percentage defense at 40.1 percent.

▶ Lawrence ranks 11th in the league in free-throw shooting at 53.8 percent. Lawrence has been on the short end of the stick this season when it comes to free throws. Lawrence has attempted 312 free throws while opponents have made 311 (456 attempts) free throws.

▶ The Vikings are 10th in the league in 3-point shooting at 23.9 percent.

Lawrence is ninth in defending the 3-pointer at 31.1 percent.

### SCOUTING MARANATHA BAPTIST

▶Maranatha Baptist dropd its 11th consecutive game with an 83-53 loss to Lincoln Christian on Feb. 3. The Sabercats have a pair of games before they travel to Lawrence on Monday. Maranatha Baptist takes on Moody Bible on Thursday and then faces UC-Santa Cruz on Saturday. Maranatha's last victory was a 43-40 win over Northland on Dec. 12.



▶Maranatha brings one of the biggest starting lineups Lawrence has faced all season. The Sabercats have four starters at 5-foot-10 or taller, including two at 6-0 and 6-1.

▶Senior forward Stacie Ross leads the Sabercats in scoring at 10.6 points per contest. Ross, who is shooting 45.2 percent from the floor, also is tops on the team in rebounding at 5.6 per contest.

▶Similar to the Vikings, Maranatha Baptist do not rely heavily on the 3-pointer. The Sabercats have hit just 43 3-pointers this season.

▶Guard Stacy Reinke is the top 3-point shooter on the team at 31.9 percent. Reinke, who is averaging 8.7 points per game, has hit 15 3-pointers this season.

▶Maranatha Baptist is averaging 50.2 points per game this season. The Sabercats are allowing 70.4 points per contest.

▶The Sabercats are shooting 35.3 percent from the floor, and Maranatha is allowing the opposition to shoot 39.4 percent from the field.

▶Maranatha is shooting 25.6 percent from beyond the arc, while oppo-

## Lawrence University Basketball Facts

Location	Appleton, Wis.
Founded	1847
Enrollment	1,450
President	Mark Burstein
Affiliation	NCAA Division III
Conference	Midwest Conference
Nickname	Vikings
School Colors	Blue and White
Home Arena	Alexander Gymnasium (1929, capacity 1,100)
Director of Athletics	Mike Szkodzinski
First season of basketball	1975-76
Seasons of basketball	38
All-time record	354-482 (.423)
Midwest Conference titles	2
1989-90, 1998-99	
Lake Michigan Conference titles	1
1988-89	
NCAA tournament appearances	1
1999	

nents are connecting at 33.1 percent from 3-point range.

▶The Sabercats have hit just 50.8 percent of their shots from the foul line. Maranatha Baptist has attempted only 236 free throws, while opponents have made 210 on the season.

▶This is the fourth time during this academic year that a Lawrence team has faced Maranatha Baptist in a nonconference game. The Vikings have taken on Maranatha in football, women's soccer and volleyball as well.

### CAREER SCORING LEADERS

- 1,487 – Claire Getzoff, 2002-06
- 1,225 – Sarah O'Neil, 1988-92
- 1,186 – Felice Porrata, 2001-05
- 1,105 – Jackie Huss, 1993-97
- 975 – Katherine Lofgren, 1989-93
- 965 – Krista Tomter, 1989-93
- 956 – Kelly Mulcahy, 2004-08
- 942 – Gina Seegers, 1988-92
- 909 – Alex Deshler, 2010-14
- 895 – Molly Lieberman, 1993-97
- 868 – Carrie Van Groll, 2004-08
- 866 – Dara Rakun, 1998-2002
- 833 – Robin Chapman, 1979-83
- 830 – Vicki Corbeil, 1976-79
- 828 – Tracie Spangenberg, 1986-90
- 808 – Joy Rogatzki, 1996-2000
- 799 – Laura Aerts, 2006-10
- 751 – Alisa Haase, 1992-96
- 745 – Beth Pollnow, 1998-2002
- 723 – Deb Jaryszak, 1978-82
- 639 – Holly Skaer, 1988-91
- 622 – Mindy Rueden, 1996-2000
- 613 – Cathy Kaye, 2009-13
- 598 – Amber Lisowe, 2011-14
- 582 – Jenny Stoner, 2004-08

**2014-15 Lawrence Basketball**  
**Lawrence University Combined Team Statistics (as of Feb 12, 2015)**  
**All games**

<b>RECORD:</b>	<b>OVERALL</b>	<b>HOME</b>	<b>AWAY</b>	<b>NEUTRAL</b>
ALL GAMES	0-20	0-9	0-10	0-1
CONFERENCE	0-16	0-8	0-8	0-0
NON-CONFERENCE	0-4	0-1	0-2	0-1

#	Player	gp-gs	min	avg	Total		3-Point		F-Throw		Rebounds				pf	dq	a	to	blk	stl	pts	avg							
					fg-fga	fg%	3fg-fga	3fg%	ft-fa	ft%	off	def	tot	avg															
24	Danelle Buck	18-17	512	28.4	66-152	.434	7-18	.389	31-56	.554	38	60	98	5.4	45	3	18	63	5	22	170	9.4							
20	Elizabeth Arco	16-15	352	22.0	59-159	.371	0-0	.000	24-53	.453	20	73	93	5.8	61	7	19	50	22	15	142	8.9							
23	Andrea Wilkinson	18-15	513	28.5	48-124	.387	0-1	.000	12-20	.600	22	66	88	4.9	35	0	25	50	8	16	108	6.0							
14	Kassidy Rinehart	20-14	502	25.1	35-115	.304	1-2	.500	22-53	.415	52	38	90	4.5	62	4	36	80	0	20	93	4.7							
02	Patsy Kealey	12-5	222	18.5	20-68	.294	1-11	.091	14-19	.737	13	31	44	3.7	37	0	22	33	0	8	55	4.6							
10	Olivia Hoesley	20-6	340	17.0	35-105	.333	16-62	.258	3-6	.500	10	19	29	1.5	15	0	8	28	0	10	89	4.5							
42	Jeannine Schulz	10-8	259	25.9	15-52	.288	0-1	.000	12-20	.600	12	38	50	5.0	19	0	5	19	3	13	42	4.2							
03	Natalie Kramer	18-14	409	22.7	20-69	.290	4-17	.235	11-12	.917	3	29	32	1.8	36	1	19	46	1	10	55	3.1							
15	Fanita Robins	17-4	252	14.8	14-62	.226	0-4	.000	20-28	.714	8	37	45	2.6	32	0	14	63	3	13	48	2.8							
05	Nicole Cummins	11-0	103	9.4	8-27	.296	2-8	.250	7-18	.389	2	6	8	0.7	11	0	5	14	0	7	25	2.3							
12	Lauren Deveikis	20-2	258	12.9	17-66	.258	2-14	.143	4-8	.500	7	13	20	1.0	16	0	12	23	0	5	40	2.0							
40	Katie Schumacher	9-0	56	6.2	6-16	.375	0-0	.000	3-7	.429	7	9	16	1.8	7	0	1	5	1	2	15	1.7							
22	Bethany Hoster	20-0	217	10.9	10-35	.286	0-0	.000	5-12	.417	20	30	50	2.5	27	0	17	21	4	6	25	1.3							
32	Margaret Johnson	2-0	5	2.5	0-0	.000	0-0	.000	0-0	.000	0	1	1	0.5	1	0	0	0	0	0	0	0.0							
Team											39	41	80											10					
Total.....		20	4000		353-1050	.336	33-138	.239	168-312	.538	253	491	744	37.2	404	15	201	505	47	147	907	45.3							
Opponents.....		20	4000		481-1200	.401	136-437	.311	311-456	.682	282	519	801	40.0	340	-	294	325	62	289	1409	70.4							

<b>TEAM STATISTICS</b>	<b>LU</b>	<b>OPP</b>	<b>Date</b>	<b>Opponent</b>	<b>Score</b>	<b>Att.</b>	
SCORING	907	1409	11/15/14	at Concordia University Chicago	L 57-95	225	
Points per game	45.3	70.4	11/19/14	MARIAN UNIVERSITY	L 38-61	349	
Scoring margin	-25.1	-	* 11/22/14	RIPON COLLEGE	L 40-41	522	
FIELD GOALS-ATT	353-1050	481-1200	* 12/03/14	BELOIT COLLEGE	L 31-51	428	
Field goal pct	.336	.401	* 12/06/14	at Illinois College	L 41-70	250	
3 POINT FG-ATT	33-138	136-437	* 12/09/14	at Lake Forest College	L 37-52	111	
3-point FG pct	.239	.311	N 12/13/14	vs Whittier College	L 54-68	51	
3-pt FG made per game	1.7	6.8	12/14/14	at UC Santa Cruz	L 35-57	68	
FREE THROWS-ATT	168-312	311-456	* 01/03/15	at Grinnell College	L 48-63	391	
Free throw pct	.538	.682	* 01/07/15	ST. NORBERT COLLEGE	L 34-88	367	
F-Throws made per game	8.4	15.6	* 01/10/15	at Monmouth College	L 41-96	100	
REBOUNDS	744	801	* 01/13/15	CARROLL UNIVERSITY	L 34-58	432	
Rebounds per game	37.2	40.0	* 01/17/15	CORNELL COLLEGE	L 50-64	604	
Rebounding margin	-2.8	-	* 01/21/15	at Ripon College	L 37-49	147	
ASSISTS	201	294	* 01/24/15	at Knox College	L 71-123	375	
Assists per game	10.1	14.7	* 01/27/15	LAKE FOREST COLLEGE	L 43-77	234	
TURNOVERS	505	325	* 01/31/15	KNOX COLLEGE	L 80-94	422	
Turnovers per game	25.3	16.3	* 02/04/15	at St. Norbert College	L 27-73	238	
Turnover margin	-9.0	-	* 02/07/15	ILLINOIS COLLEGE	L 52-65	453	
Assist/turnover ratio	0.4	0.9	* 02/10/15	at Beloit College	L 57-64	150	
STEALS	147	289					
Steals per game	7.4	14.5	* = Conference game				
BLOCKS	47	62					
Blocks per game	2.4	3.1					
ATTENDANCE	3811	2106					
Home games-Avg/Game	9-423	10-206					
Neutral site-Avg/Game	-	1-51					

<b>Score by Periods</b>	<b>1st</b>	<b>2nd</b>	<b>Totals</b>
Lawrence University	425	482	907
Opponents	676	733	1409

**2014-15 Lawrence Basketball**  
**Lawrence University Points-Rebounds-Assists (as of Feb 12, 2015)**  
**All games**

Opponent	Date	Score	02		03		05		10		12		14		15	
			KEALEY,PAT	KRAMER,NAT	CUMMINS,NI	HOESLEY,OL	DEVEIKIS,L	RINEHART,K	ROBINS,FAN							
at Concordia University	11/15/14	57-95	L	DNP	2-1-1	0-0-0	0-0-0	2-3-1	15-4-1	9-7-0						
MARIAN UNIVERSITY	11/19/14	38-61	L	DNP	2-2-1	DNP	0-0-0	2-0-0	6-4-3	4-6-0						
RIPON COLLEGE	11/22/14	40-41	L	DNP	5-3-2	DNP	0-0-0	5-0-0	1-0-1	0-2-2						
BELOIT COLLEGE	12/03/14	31-51	L	DNP	0-1-0	DNP	0-0-0	2-0-1	5-6-3	4-3-1						
at Illinois College	12/06/14	41-70	L	DNP	4-2-0	2-2-0	5-0-0	4-2-0	4-4-2	5-2-1						
at Lake Forest College	12/09/14	37-52	L	DNP	5-5-2	2-0-0	5-2-1	0-3-1	6-2-1	0-2-0						
vs Whittier College	12/13/14	54-68	L	DNP	10-3-2	DNP	2-1-1	2-0-1	5-4-3	12-2-2						
at UC Santa Cruz	12/14/14	35-57	L	DNP	4-3-0	3-0-0	0-3-1	2-2-0	4-4-3	0-3-1						
at Grinnell College	01/03/15	48-63	L	5-0-3	3-1-2	DNP	2-2-1	0-0-0	4-5-3	4-2-0						
ST. NORBERT COLLEGE	01/07/15	34-88	L	6-5-3	0-0-0	DNP	5-0-0	1-1-0	6-5-0	1-1-0						
at Monmouth College	01/10/15	41-96	L	4-7-1	4-0-4	DNP	13-3-1	3-0-1	2-8-1	0-1-2						
CARROLL UNIVERSITY	01/13/15	34-58	L	3-5-3	3-0-0	0-0-0	9-1-0	0-0-0	4-3-2	2-4-1						
CORNELL COLLEGE	01/17/15	50-64	L	0-1-2	DNP	DNP	10-1-0	2-1-2	3-9-1	DNP						
at Ripon College	01/21/15	37-49	L	0-1-0	DNP	0-1-1	12-2-1	0-1-1	1-4-2	DNP						
at Knox College	01/24/15	71-123	L	10-6-4	2-2-2	4-2-1	7-2-0	5-0-2	6-3-0	2-1-0						
LAKE FOREST COLLEGE	01/27/15	43-77	L	0-0-0	2-0-0	11-3-2	2-5-0	4-1-0	2-3-2	0-2-0						
KNOX COLLEGE	01/31/15	80-94	L	17-7-1	5-2-1	1-0-1	2-2-0	4-5-1	0-7-6	DNP						
at St. Norbert College	02/04/15	27-73	L	0-4-0	0-1-0	2-0-0	2-0-1	2-1-0	3-2-0	1-4-1						
ILLINOIS COLLEGE	02/07/15	52-65	L	1-5-1	0-3-2	DNP	10-4-1	0-0-1	13-11-2	0-2-2						
at Beloit College	02/10/15	57-64	L	9-3-4	4-3-0	0-0-0	3-1-0	0-0-0	3-2-0	4-1-1						

Opponent	Date	Score	20		22		23		24		32		40		42	
			ARCO,ELIZA	HOSTER,BET	WILKINSON,	BUCK,DANEL	JOHNSON,MA	SCHUMACHER	SCHULZ,JEAN							
at Concordia University	11/15/14	57-95	L	4-5-2	2-2-0	4-6-2	8-2-0	DNP	DNP	11-5-1						
MARIAN UNIVERSITY	11/19/14	38-61	L	9-6-0	1-2-0	4-2-2	2-3-1	DNP	DNP	8-3-0						
RIPON COLLEGE	11/22/14	40-41	L	8-10-1	1-0-1	9-6-2	11-7-0	DNP	DNP	0-3-1						
BELOIT COLLEGE	12/03/14	31-51	L	4-1-1	0-1-0	8-6-2	6-4-0	DNP	DNP	2-5-2						
at Illinois College	12/06/14	41-70	L	DNP	0-1-1	5-3-0	10-7-2	DNP	DNP	2-10-0						
at Lake Forest College	12/09/14	37-52	L	DNP	2-2-0	6-9-2	7-6-1	DNP	DNP	4-7-0						
vs Whittier College	12/13/14	54-68	L	DNP	0-7-0	DNP	17-10-1	DNP	DNP	6-8-1						
at UC Santa Cruz	12/14/14	35-57	L	DNP	3-5-4	DNP	10-3-1	DNP	DNP	9-3-0						
at Grinnell College	01/03/15	48-63	L	8-5-2	0-0-0	10-8-0	12-5-0	DNP	DNP	0-2-0						
ST. NORBERT COLLEGE	01/07/15	34-88	L	6-2-1	2-1-0	0-1-0	3-0-0	0-1-0	4-2-0	0-4-0						
at Monmouth College	01/10/15	41-96	L	7-7-0	2-6-1	6-2-0	DNP	0-0-0	0-1-0	DNP						
CARROLL UNIVERSITY	01/13/15	34-58	L	4-5-0	2-7-2	5-3-1	DNP	DNP	2-1-0	DNP						
CORNELL COLLEGE	01/17/15	50-64	L	19-6-3	0-0-1	6-3-2	10-5-0	DNP	DNP	DNP						
at Ripon College	01/21/15	37-49	L	14-10-1	0-0-0	4-8-2	6-8-3	DNP	DNP	DNP						
at Knox College	01/24/15	71-123	L	6-8-2	4-4-4	11-6-2	12-7-2	DNP	2-6-0	DNP						
LAKE FOREST COLLEGE	01/27/15	43-77	L	2-3-0	2-5-1	4-5-2	14-7-1	DNP	0-2-0	DNP						
KNOX COLLEGE	01/31/15	80-94	L	29-8-5	2-2-2	14-9-1	6-3-2	DNP	0-0-0	DNP						
at St. Norbert College	02/04/15	27-73	L	7-8-0	0-1-0	2-2-0	3-2-1	DNP	5-4-1	DNP						
ILLINOIS COLLEGE	02/07/15	52-65	L	2-4-0	2-2-0	8-5-1	14-8-1	DNP	2-0-0	DNP						
at Beloit College	02/10/15	57-64	L	13-5-1	0-2-0	2-4-4	19-11-2	DNP	0-0-0	DNP						



## 2014-15 GAME RECAPS

**November 15**

**Concordia Chicago 95, Lawrence 57**

RIVER FOREST, Ill. — The Concordia University Chicago women's basketball team got



off to a fast start and rolled to a 95-57 nonconference victory over Lawrence University at Geiseman Gymnasium.

Lauren Orr scored a game-high 20 points off the bench to pace the Cougars (1-0) and was one of four players in double figures. Miranda Rogers added 16 points for Concordia.

Kassidy Rinehart paced Lawrence (0-1) with 15 points and hit 6-of-7 shots from the floor. Jeannine Schulz added 11 points off the bench for the Vikings. Fanita Robins added nine points and a game-high seven rebounds for the Vikings.

The Cougars jumped out to a 16-4 lead in the first seven minutes and pulled away from there. Concordia pushed the lead to 44-16 at the half.

Lawrence played a much stronger second half by hitting 16-of-28 shots from the floor (57.1 percent) on the way to 41 points after the break.

Concordia shot 47.4 percent from the floor during the game and connected on 15-of-33 attempts from 3-point range.

**November 19**

**Marian 61, Lawrence 38**

APPLETON, Wis.

-- The Marian University women's basketball team built a big first-half lead and



went on to a 61-38 nonconference victory over Lawrence University at Alexander Gymnasium.

Amelia Mirsberger led Marian (1-0) and all scorers with 18 points as she hit 6-of-8 shots from the floor and went 4-for-4 from the foul line. Sarah Olewinski added 12 points for the Sabres.

Elizabeth Arco paced the Vikings

(0-2) with nine points and six rebounds, and Jeannine Schulz added eight points.

Marian trailed early but went on an 18-2 run in the first half to pull out to a 20-7 lead with 9:14 left in the first half. Mirsberger scored nine points in the first half as the Sabres built a 32-16 advantage at the break.

The Vikings chipped away at the lead over the first nine minutes of the second half. Lawrence outscored the Sabres 13-8 to open the half, capped by Arco's layup, to trim the lead to 40-29. Arco scored four points in that run and Schulz had three.

Marian responded by going on a 16-4 run to grab a 56-33 lead and seal the victory.

**November 22**

**Ripon 41, Lawrence 40**

APPLETON, Wis. -- The Lawrence University



women's basketball team scored just one point over the final 11 minutes and endured a

horrendous afternoon at the foul line in a 41-40 Midwest Conference loss to Ripon College at Alexander Gymnasium.

Ripon (1-2, 1-0 MWC) got two free throws from Meg Ryan with 30 seconds left to take the lead, and freshman guard Lauren Deveikis missed a jumper with five seconds left that would have won it for Lawrence (0-3, 0-1).

Both teams had a rough time at the foul line as Lawrence connected on only 9-of-22 from the stripe and Ripon hit just 9-of-21.

Freshman Danelle Buck led Lawrence with 11 points and she picked up seven rebounds. Freshman forward Elizabeth Arco pulled down 10 rebounds and added eight points for the Vikings. Andrea Wilkinson chipped in with nine points for the Vikings.

Ryan, McKenzie Banasik and Nicole Herkert scored 10 points apiece to pace Ripon, and Herkert had a

game-high 13 rebounds.

Lawrence led throughout most of the contest as the Vikings took their first lead at 7-5 on Arco's three-point play with 13:15 left in the first half. Lawrence would build that advantage to as much as nine points before the Red Hawks trimmed the lead to 28-22 at the half.

The Vikings grabbed their biggest lead of the game by going on a 6-0 run, capped by Natalie Kramer's layup and an Arco free throw with 11:07 left, for a 39-27 edge.

Ripon began chipping away at the advantage as the Vikings went ice cold from the floor and the foul line. Lawrence finished the game by going 0-for-11 from the floor and 1-for-5 from the line.

Lawrence's only points in that stretch came on Kassidy Rinehart's free throw with 4:51 remaining that gave the Vikings a 40-35 lead. Ripon got a layup from Chelsea Moldenhauer and a couple of free throws from Banasik to cut the lead to 40-39.

The Vikings then committed three consecutive turnovers before fouling Ryan. She hit both free throws to give Ripon the lead for good.

**December 3**

**Beloit 51, Lawrence 31**

APPLETON, Wis.

-- The Lawrence University women's basketball team



endured a scoring drought that lasted nearly 12 minutes in a 51-31 Midwest Conference loss to Beloit College at Alexander Gymnasium.

Lana Wieseman led Beloit (3-3, 2-1 MWC) with 18 points and nine rebounds, and Laura Panicali added 13 points and nine boards.

Andrea Wilkinson came off the bench to score eight points for the Vikings (0-4, 0-2). The Vikings hit just 12-of-51 shots (23.5 percent) from the floor.

Lawrence had battled back in the

## 2014-15 GAME RECAPS

first half and tied the game at 16-16 on Kassidy Rinehart's jumper with 6:43 left in the first half. The Bucs would finish the first half on a 13-0 run, capped by Panicali's layup with 28 seconds left, to take a 29-16 lead at the half.

Lawrence finally broke the scoring drought on a layup by Danelle Buck, who finished with six points, with 14:45 left in the game. That started an 8-2 run for the Vikings, capped by back-to-back baskets from Buck, that trimmed Beloit's lead to 33-24 with 13:20 left.

The Bucs responded by scoring 16 of the game's next 20 points to grab a 49-28 lead with 6:07 left. Lawrence didn't get closer than 18 points the rest of the way.

### December 6

#### Illinois College 70, Lawrence 41

JACKSONVILLE, Ill. -- Reigning league Player of the Year Hannah McGinnis posted a double-double to lead the Illinois



College women's basketball team to a 70-41 league Midwest Conference victory over Lawrence University at Sherman Gymnasium.

McGinnis scored 19 points and grabbed 15 rebounds to go with four assists to lead the Lady Blues (4-2, 2-0 MWC).

Danelle Buck paced Lawrence (0-5, 0-3) with 10 points, and she grabbed seven rebounds. Jeannine Schulz picked up a team-high 10 rebounds for the Vikings.

Lawrence trailed by double digits twice in the first half before trimming Illinois College's lead to 29-21 at the half.

The Lady Blues led 35-25 early in the second half after Buck's jumper with 16:35 left. Illinois College then went on a 17-7 run over the next six minutes to expand the advantage to 52-32 with 10:48 remaining.

Lawrence never got closer than 17 points the rest of the way.

### December 9

#### Lake Forest 52, Lawrence 37

LAKE FOREST, Ill. — The Lake Forest College women's basketball team pulled away late and posted a 52-37 Midwest Conference victory over Lawrence University.



Brie Majkowski scored 14 points and K.C. Stralka added 10 to pace the Foresters (3-5, 3-3 MWC).

Danelle Buck scored seven points and grabbed six rebounds for Lawrence (0-6, 0-4). Andrea Wilkinson and Kassidy Rinehart added six points apiece for the Vikings, and Wilkinson had a game-high nine rebounds.

Lawrence, which led by as many as five points in the first half, trailed 25-22 at the break. The Vikings got a three-point play from Rinehart to tie the score at 25-25 before the Foresters pulled out to a 35-27 edge.

Nicole Cummins then scored on a layup and Buck made a free throw to cut the margin back to 35-30 with 12:45 remaining. Lawrence was then hit by a scoring drought that lasted 7:40 as Lake Forest scored the game's next eight points for a 43-30 advantage.

Buck hit a pair of free throws with 5:05 left to cut the lead to 43-32, but Lawrence would get no closer the rest of the way.

### December 13

#### Whittier 68, Lawrence 54

SANTA CRUZ, Calif. — The Whittier College women's basketball team pulled away midway through the second half and went on to a 68-54 nonconference victory over Lawrence University at the UC Santa Cruz Classic.



Priscilla Rodriguez scored 14 points and Ana Youngblood grabbed 12 rebounds to pace the Poets (3-3).

Freshman forward Danelle Buck picked up her first career double-double for Lawrence (0-7) with 17 points and 10 rebounds. Fanita Robins came off the bench to add 12 points for the Vikings.

It was a see-saw first half, and Lawrence pulled out to a 19-12 advantage. The Poets came back with a 17-3 run to take a 29-22 lead, but Lawrence answered back. The Vikings finished the first half on a 12-4 run, and Buck's jumper at the buzzer tied the game at 34-34 at the break.

The Poets scored the first seven points of the second half to grab a 41-34 edge with 16:09 remaining. After a Buck layup, Whittier got a layup from Erica Houston and back-to-back 3-pointers from Dannika Navales-Lugt to take a 49-36 lead with 11:12 left.

A layup from Kassidy Rinehart and a pair of free throws from Natalie Kramer cut Whittier's lead to 49-40 with 10:02 left. That's as close as the Vikings would get, and Whittier would go on to lead by as many as 16 points.

### December 14

#### UC Santa Cruz 57, Lawrence 35

SANTA CRUZ, Calif. — The UC Santa Cruz women's basketball team held Lawrence University to only 13 first-half points and went on to a 57-35 nonconference win at the Santa Cruz Classic.

Leah Parrish scored 13 points, and Sara Crane grabbed a game-high 10 rebounds to lead the Banana Slugs (8-3).

Freshman forward Danelle Buck paced Lawrence (0-8) with 10 points.

Lawrence was limited to only two points in the first 5:53 of the contest as Santa Cruz jumped out to an 11-2 advantage. Lawrence didn't hit double digits for the game until Jeannine



## 2014-15 GAME RECAPS

Schulz's jumper with 2:35 remaining in the first half.

Santa Cruz led by as many as 24 points in the first half and held a 35-13 advantage at the break.

Lawrence cut the margin to 37-20 on Buck's layup with 14:29 remaining, but that's as close as the Vikings would get.

### January 3

#### Grinnell 63, Lawrence 48

GRINNELL, Iowa — The Grinnell College women's basketball team turned back a second-half rally from Lawrence



University and went on to a 63-48 Midwest Conference victory at Darby Gymnasium.

Alissa Hirsh led Grinnell (4-6, 3-3 MWC) with 18 points, and Alex Neckopulos had a double-double for the Pioneers with 10 points and 15 rebounds.

Danelle Buck led Lawrence (0-9, 0-5) with 12 points, and Andrea Wilkinson added 10 points and a team-best eight rebounds.

Grinnell built a 15-point lead in the first half, but the Vikings chipped away by outscoring the Pioneers 16-10 over the final 9:31 of the first half.

The Pioneers led 35-26 at the break, but Lawrence scored the first seven points of the second half to trim the margin to 35-33. Elizabeth Arco had a three-point play, and Buck scored back-to-back baskets, the second with 15:52 left, to cut the lead to two.

Grinnell responded with a 10-0 run of its own to retake control of the game. Sophia Gatton's 3-pointer with 13:25 left gave the Pioneers a 45-33 advantage, but the Vikings fought back.

The Vikings countered by going on an 11-5 run, with the final six points coming on consecutive baskets from Wilkinson, to cut the lead to

50-44 with 9:24 left.

It was still a six-point game after Fanita Robins' layup for the Vikings cut the margin to 54-48 with 3:06 left. Grinnell then scored the game's final nine points to seal the victory.

### January 7

#### St. Norbert 88, Lawrence 34

APPLETON, Wis. — The St. Norbert College women's basketball team pulled away early and rolled to an 88-34 Midwest Conference victory over Lawrence University at Alexander Gymnasium.



Regan Carmichael scored 16 points to lead five St. Norbert players in double figures. Heidi Van Sistine had a double-double for the Green Knights (10-2, 7-0 MWC) with 14 points and a game-high 10 rebounds.

Kassidy Rinehart, Elizabeth Arco and Patsy Kealey scored six points apiece to pace the Vikings (0-10, 0-6).

St. Norbert pulled out to a double-digit lead at 19-7 just 9:13 into the game. The Green Knights led by as many as 30 points in the first half and were up 40-10 at the half.

St. Norbert would lead by as many as 56 points in the second half on Megan McGoohan's 3-pointer with 47 seconds left in the game.

### January 10

#### Monmouth 96, Lawrence 41

MONMOUTH, Ill. — The Monmouth College women's basket-



ball team jumped out to a big early lead and went on to a 96-41 Midwest Conference victory over Lawrence University at Glennie Gymnasium.

The Scots (4-8, 3-4 MWC) led by double digits at 17-6 just six minutes into the game and increased their advantage from there. Monmouth led 47-19 at the half.

Kelsey Walsberg scored 15 points to lead five Monmouth players in double figures.

Olivia Hoesley came off the bench to pace the Vikings (0-11, 0-7) with a career-high 13 points and her first double-digit scoring game. Hoesley hit a career-best three 3-pointers.

Kassidy Rinehart picked up a game-high eight rebounds for the Vikings, and Natalie Kramer picked up four assists.

### January 13

#### Carroll 58, Lawrence 34

APPLETON, Wis.

— The Carroll University women's basketball team steadily pulled away in the second half and posted a 58-34 Midwest Conference victory over Lawrence University at Alexander Gymnasium.



Malory Christenson paced Carroll and all scorers with 15 points, and Julie Piech added 13 points for the Pioneers.

Olivia Hoesley, making her first career start for Lawrence, led the Vikings with nine points. Bethany Hoster grabbed a game-high seven rebounds for the Vikings.

Carroll (10-3, 7-1 MWC) led 28-18 at the half, and Lawrence (0-12, 0-8) never got closer than 11 points in the second half. A jumper from Andrea Wilkinson and an Elizabeth Arco layup cut Carroll's lead to 35-24 with 14:24 left in the contest.

Carroll then scored the game's next eight points to push the lead to 43-24 with 11:55 left. The Pioneers' biggest lead of the contest was the final margin.

Carroll won the game at the foul line by hitting 25-of-32 free throws. Lawrence, which turned the ball over 43 times, shot just 12 free throws in the contest. Carroll won despite hitting just 30.8 percent of its shots from the floor.



## 2014-15 GAME RECAPS

**January 17**

**Cornell 64, Lawrence 50**

APPLETON, Wis. — It took two-time defending Midwest Conference champion Cornell College the entire second half to put away a pesky Lawrence University women's basketball team by the score of 64-50 in a league game at Alexander Gymnasium.



Cornell (8-7, 6-4 MWC) led by just four at the half, and the Vikings (0-13, 0-9) were within striking distance until the final two minutes of the game.

Rikki Mulloy scored 17 points to pace the Rams, and Taylor Dicus added 14 points and eight rebounds.

Freshman Elizabeth Arco scored a game-high 19 points, grabbed six rebounds and picked up two blocks and two steals to pace Lawrence. Fellow rookies Olivia Hoesley and Danelle Buck added 10 points apiece for the Vikings, and Kassidy Rinehart pulled down a game-high nine rebounds.

Lawrence trailed by as many as eight points in the first half before scoring three consecutive baskets to cut the advantage to 17-15. Cornell pushed the lead back to seven, but the Vikings scored seven straight, including five from Buck, to tie the game at 24-24.

Cornell led 30-26 at the half, and the Rams extended the lead to 11 early in the second half. Lawrence trimmed the lead back to six points before the Rams stretched it back to 13 at 56-43. Lawrence kept chipping away and was still as close as nine points with less than two minutes left but couldn't get any closer.

**January 21**

**Ripon 47, Lawrence 39**

RIPON, Wis. — The Ripon College women's basketball team held off Lawrence University and posted a 47-39 Midwest Conference



victory at the Storzer Center.

Emma McDonald and Chelsea Moldenhauer had 11 points apiece to pace Ripon (2-14, 2-9 MWC), and McDonald grabbed a team-best nine rebounds.

Elizabeth Arco scored a game-high 14 points on 7-of-9 shooting and posted her first career double-double with a game-high 10 rebounds for the Vikings (0-14, 0-10). Olivia Hoesley added 12 points for Lawrence and went 4-for-7 from beyond the arc.

Lawrence led by as many as seven points in the first half, but Ripon rallied to take a 17-16 lead at the half.

Ripon stretched the lead to 35-25 with 10:36 left, but Hoesley drained a 3-pointer and Danelle Buck made a pair of free throws to trim the lead back to 35-30.

The Red Hawks responded by scoring the game's next six points to grab a 41-30 lead with 7:47 left. Lawrence cut the lead to six points twice after that but could get no closer.

**January 24**

**Knox 123, Lawrence 71**

G A L E S - BURG, Ill. — The Knox College women's basketball team hit a school-record 18 3-pointers en route to a 123-71 Midwest Conference victory over Lawrence University at Memorial Gymnasium.



The 123 points also set a school record for the Prairie Fire (7-9, 5-6 MWC).

Jessica Howard hit seven 3-pointers on her way to a game-high 28 points for Knox. Jodi Marver added 19 points for Knox and was one of four players scoring in double figures.

Knox hit 18-of-48 from beyond the arc and also went 25-for-34 from the foul line.

Danelle Buck led Lawrence (0-15, 0-11) with 12 points, and she pulled down seven rebounds. Andrea Wilkinson added 11 points and six rebounds,

and Patsy Kealey had 10 points and six boards.

Lawrence led 13-12 after Elizabeth Arco's jumper with 13 minutes left in the first half, but Knox went on a 14-3 run to grab a 26-16 advantage.

Lawrence trimmed the lead back to six and trailed by nine points when Knox finished the final 5:21 of the first half on a 22-8 run. The Prairie Fire led 57-34 at the break.

Knox steadily increased its lead and its biggest advantage was the 52-point final margin.

**January 27**

**Lake Forest 77, Lawrence 43**

APPLETON, Wis. — The Lake Forest College women's basketball team scored the game's first 16 points and never looked back en route to a 77-43 Midwest Conference win over Lawrence University at Alexander Gymnasium.



Michelle Ricolcol scored 20 points to pace Lake Forest (8-9, 8-5 MWC), and Danielle Canulli added 16 points for the Foresters. Fifteen of Lake Forest's 16 players scored in the game.

Danelle Buck led Lawrence (0-16, 0-12) with 14 points and a game-high seven rebounds. Nicole Cummins came off the bench to score a career-high 11 points for the Vikings.

Lake Forest hit five of its first six shots from the floor to help build a 16-0 edge. The Vikings trimmed the margin to 18-7, but Lake Forest stretched the lead all the way to 37-15 at the half. Lake Forest would go on to lead by as many as 38 points in the second half.

The Foresters shot 49.1 percent for the game and lived at the foul line. Lake Forest went 20-for-32 at the charity stripe during the game. Lawrence shot just six free throws in the game.

## 2014-15 GAME RECAPS

### January 31

#### Knox 94, Lawrence 80

APPLETON, Wis. — The Knox College women's basketball team pulled away in the final five minutes and posted a 94-80 Midwest Conference win over Lawrence University at Alexander Gymnasium.

Jodi Marver paced Knox (9-9, 7-6 MWC) with 20 points as she hit 14-of-18 free throws.

Elizabeth Arco led Lawrence (0-17, 0-13) with a game-high 29 points, and she picked up eight rebounds, five assists, four steals and two blocks. Patsy Kealey added 17 points and seven rebounds for the Vikings, and Andrea Wilkinson had 14 points and a game-high nine rebounds.

Knox won the game at the foul line as the Prairie Fire hit 32-of-50 foul shots. Lawrence, which went 18-for-29 from the line, was whistled for 32 fouls. Knox, which played a full-court press for the entire game, was called for 25 fouls.

Lawrence scored the first six points of the game and built its biggest lead at 19-11 on Arco's layup with 12:38 left in the first half. Knox then went on a 14-0 run to grab a 25-19 advantage with 11:06 left before the break.

Lawrence came back to take the lead at 36-35 on Danelle Buck's free throw with 3:47 left in the opening half. Knox rallied to grab a 45-41 lead at the break.

Knox pushed its lead to 71-59 on a pair of Carley Bechen free throws with 9:47 left in the game, but the Vikings rallied. Arco, Buck and Kealey all picked up baskets for the Vikings as Lawrence trimmed the margin to 74-69 with 6:01 left.

Lawrence was down 81-74 when the Prairie Fire hit four consecutive baskets, including a 3-pointer, to take control for good with a 90-76 lead with 2:11 left.



### February 4

#### St. Norbert 73, Lawrence 27

DE PERE, Wis. — The St. Norbert College women's basketball team roared out to a 22-point halftime lead and went on to a 73-27 Midwest Conference win over Lawrence University at Schuldes Sports Center.

Brianna Byrne led four St. Norbert players in double figures with 16 points. Heidi Van Sistine picked up a double-double for the Green Knights (16-3, 13-1 MWC) with 11 points and a game-high 15 rebounds.

Elizabeth Arco led Lawrence (0-18, 0-14) with seven points and eight rebounds. Katie Schumacher came off the bench to add five points for the Vikings.

St. Norbert's defense limited Lawrence to just 21.7 shooting from the floor, and the Green Knights dominated the game at the foul line. St. Norbert was 21-for-29 at the stripe. Lawrence converted 6-of-9 from the line.

St. Norbert pulled away early and led by double digits just over nine minutes into the contest. The Green Knights pulled away for a 34-12 lead at the half. St. Norbert would lead by as many as 50 points in the second half.

### February 7

#### Illinois College 65, Lawrence 52

APPLETON, Wis. — The Illinois College women's basketball team built a big lead and then held off a determined effort by Lawrence University in a 65-52 Midwest Conference victory by the Lady Blues at Alexander Gymnasium.

Reigning MWC Player of the Year Hannah McGinnis posted an impressive double-double with 30 points



and 18 rebounds for the Lady Blues (13-7, 10-5 MWC). Maddy Keith added a double-double for Illinois College with 15 points and 11 rebounds.

Kassidy Rinehart posted her own double-double for the Vikings (0-19, 0-15) with 13 points and 11 rebounds. Danelle Buck led Lawrence with 14 points, and Olivia Hoesley came off the bench to add 10 points.

Illinois College jumped out to a 15-5 lead just 6:16 into the first half, but the Vikings battled back. Lawrence went on a 10-2 run late in the half as Buck hit a pair of 3-pointers to help trim the lead to 28-23 with 3:27 left in the opening half. Illinois College then scored the final five points of the half to stretch the margin back to 33-23 at the break.

The Lady Blues opened the second half on a 16-2 run to stretch the lead to 49-25 with 14:41 left. Over the next 9:41, Lawrence slashed the lead to 11 points and 54-43 with 5:00 left. Rinehart scored six of Lawrence's 18 points during that run.

McGinnis finally stemmed the tide with a layup, and the Lady Blues hit 7-of-10 free throws in the final 1:58 to seal the win.

### February 10

#### Beloit 64, Lawrence 57

BELOIT, Wis. — The Beloit College women's basketball team scored the final six points of the game and held off Lawrence University 64-57 in a Midwest Conference game at Flood Arena.

Lana Wieseman led Beloit (6-15, 5-11 MWC) with 25 points, with most of those earned by going 14-for-16 at the foul line. Beloit went 29-for-39 from the stripe for the game.

Lawrence freshman Danelle Buck led the Vikings (0-20, 0-16) with a double-double of 19 points and 11 rebounds before fouling out. Fellow Lawrence freshman Elizabeth Arco added 13 points, five rebounds and



## 2014-15 GAME RECAPS

three blocks.

The Vikings trailed by as many as 13 points in the second half before rallying. Lawrence went on a 10-0 run by hitting four consecutive shots, including back-to-back 3-pointers from Patsy Kealey and Olivia Hoesley, to cut the lead to 42-39 with 12:11 left.

The Bucs pushed the lead back to back to as many as 10 points, and the Vikings were down 57-51 when Natalie Kramer sparked a mini-run with a jumper. After a Beloit free throw, Fanita Robins buried a jumper, and Kramer made a pair of free throws to trim the lead to 58-57 with 43 seconds left.

That's as close as the Vikings would get as they missed their next two shots from the floor. Beloit then went 6-for-6 from the foul line in the final 40 seconds to seal the victory.

Lawrence jumped on the Bucs from the opening tip and led 17-5 on Buck's layup with 8:28 left in the first half. Beloit scored the game's next 10 points to cut the lead to 17-15. Lawrence led 19-18, but the Bucs scored the final five points of the half to grab a 23-19 edge at the break.