



Lawrence University (0-5, 0-3 MWC)
at
Lake Forest College (2-5, 2-3 MWC)

Tuesday, Dec. 9, 5:30 p.m.

Lake Forest Sports Center, Lake Forest, Ill.



2014-15 LAWRENCE SCHEDULE

Date	Opponent	Time/Res.
11/15	at Concordia (Ill.)	L, 95-57
11/19	Marian	L, 61-38
11/22	Ripon	L, 41-40
12/3	Beloit	L, 51-31
12/6	at Illinois College	L, 70-41
12/9	at Lake Forest	5:30 pm
12/13	vs. Whittier	1:00 pm
12/14	at UC-Santa Cruz	3:00 pm
1/3	at Grinnell	1:00 pm
1/7	St. Norbert	5:30 pm
1/10	at Monmouth	1:00 pm
1/13	Carroll	5:30 pm
1/17	Cornell	3:00 pm
1/21	at Ripon	5:30 pm
1/24	at Knox	1:00 pm
1/27	Lake Forest	5:30 pm
1/31	Knox	1:00 pm
2/4	at St. Norbert	5:30 pm
2/7	Illinois College	1:00 pm
2/10	at Beloit	5:30 pm
2/16	Maranatha Baptist	6:00 pm
2/18	at Carroll	5:30 pm
2/21	Monmouth	1:00 pm
2/27-28	MWC Tournament	TBA

Home games in bold



PROBABLE STARTERS

Lawrence

Forward	Elizabeth Arco	Fr.	6-1
Forward	Danelle Buck	Fr.	5-10
Forward	Andrea Wilkinson	Jr.	6-0
Guard	Fanita Robins	Fr.	5-4
Guard	Kassidy Rinehart	Sr.	5-9



Lake Forest

Forward	K.C. Stralka	Jr.	6-0
Guard	Danielle Canulli	Sr.	5-8
Guard	Jenna Rice	Sr.	5-5
Guard	Abby Wiedman	Sr.	5-8
Guard	Kara Norvet	Fr.	5-8

VIDEO WEBCAST

►Tuesday's game at Lake Forest will be webcast and is available at: <http://portal.stretchinternet.com/lawrence/>. Dick Knapinski and Anthony Totoraitis are on the call for Lawrence home games. A link for the webcast is on the Lawrence women's basketball page.

THE COACHES

►Ashley Wellman (Alma 2008) is in her second season at Lawrence and has a record of 3-25 (.107).
►Tamlyn Tills (UW-La Crosse 1982) is in her seventh season at Lake Forest and has a record of 73-74 (.497). Tills is in her 20th season overall and has a record of 209-281 (.427).



Ashley Wellman

THE SERIES

►In a series that goes back to the first season of Lawrence basketball, 1975-76, Lake Forest holds a 45-13 advantage. The Foresters have won 14 con-

secutive games against the Vikings, who haven't posted a victory since winning two straight in the 2005-06 and 2006-07 seasons.

LAST GAME

Reigning league Player of the Year Hannah McGinnis posted a double-double to lead Illinois College to a 70-41 Midwest Conference victory over Lawrence on Saturday at Sherman Gymnasium.

McGinnis scored 19 points and grabbed 15 rebounds to go with four assists to lead the Lady Blues.

Danelle Buck paced Lawrence with 10 points, and she grabbed seven rebounds. Jeannine Schulz picked up a team-high 10 rebounds for the Vikings.

Lawrence trailed by double digits twice in the first half before trimming Illinois College's lead to 29-21 at the half.

The Lady Blues led 35-25 early in the second half after Buck's jumper with 16:35 left. Illinois College then went on a 17-7 run over the next six

minutes to expand the advantage to 52-32 with 10:48 remaining.

Lawrence never got closer than 17 points the rest of the way.

VIKINGS UPDATE

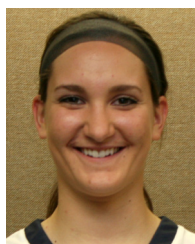
►Lawrence is in the home stretch of the first half of the season. The Vikings wrap up Midwest Conference play for a few weeks after playing Lake Forest on Tuesday. The Viking don't return to conference play until they head to Grinnell on Jan. 3.



►After Tuesday's game, the Vikings head to California for a pair of games at UC-Santa Cruz. This is the first time Lawrence will play games in The Golden State since 2007-08 when the Vikings played San Diego Christian and Point Loma Nazarene.

►Lawrence has flat-out struggled to score over the past four games. The Vikings are averaging just 37.5 points per game over that stretch while shooting 29.9 percent from the floor.

►The Vikings do not have a player averaging double figures in points. Freshman forward Danelle Buck (Newton, Wis./Valders) is tops on the squad at 7.4 points per contest, and another first-year player, Elizabeth Arco (Bartlett, Ill./Bartlett) is next at 6.3.



Danelle Buck



Elizabeth Arco

►Arco, who leads the team in rebounding at 5.5 per game, was injured in Lawrence's game vs. Beloit on Dec. 3 and did not play against Illinois College on Dec. 6.

►The Vikings did get a boost this week



MWC Standings

	MWC		Overall	
	W	L	W	L
St. Norbert	4	0	7	1
Illinois College	2	0	4	2
Carroll	3	1	6	1
Beloit	2	1	3	4
Cornell	2	2	4	3
Grinnell	2	3	3	6
Lake Forest	2	3	2	5
Knox	1	2	2	4
Ripon	1	2	1	5
Monmouth	1	3	2	4
Lawrence	0	3	0	5

Games Tuesday

Lawrence at Lake Forest

Illinois College at Knox

Ripon at Beloit

Coe at Cornell

Games Wednesday

North Central at Carroll

Games Saturday

Lawrence vs. Whittier

Illinois College at Ripon

UW-Eau Claire at Carroll

St. Norbert at UW-Stevens Point

Games Sunday

Lawrence at UC-Santa Cruz

Knox at Cal Tech

with the return of junior Katie Schumacher (Little Chute, Wis./Little Chute). Schumacher just returned to campus after studying in London during the fall term.

►Lawrence ranks 11th in the Midwest Conference in scoring offense at 41.4 points per game. The Vikings are a solid fifth in the league in scoring defense at 63.6 points per contest.

►The Vikings are 10th in the conference in field goal percentage at 32.9 percent. Lawrence is fifth in field goal percentage defense at 40.0 percent.

►Lawrence ranks fifth in the conference in 3-point shooting at 27.8 percent, and the Vikings have attempted the fewest 3-pointers in the league. Lawrence is 5-for-18 from the beyond the arc, and the team with the second-fewest number of attempts is Carroll with 52. The Vikings are eighth in field goal percentage defense at 30.6 percent.

SCOUTING LAKE FOREST

►Lake Forest snapped a three-game losing skid by topping Knox 93-99 this past Saturday in Galesburg, Ill. The Foresters had five players score in double figures against Knox's high-tempo attack. Danielle Canulli paced the Foresters with 17 points. Lake Forest led 75-49, but the Prairie Fire outscored the Foresters 39-18 over the final 8:23 to make it a close ball game in the final minute.



►Danielle Canulli is the lone Lake Forest player averaging in double figures at 10.0 points per game. Canulli is shooting a solid 44.6 percent from the floor.

►K.C. Stralka leads the Foresters in rebounding at 7.1 per game, which ranks fifth in the conference, to go along with 8.1 points per contest.

►Guard Jenna Rice directs the attack for the Foresters and checks in third in the Midwest Conference at 4.1 assists per game.

►Lake Forest ranks ninth in the Midwest Conference in scoring at 54.3 points per game. The Foresters are ninth in scoring defense at 70.6 points per contest.

►Lake Forest is shooting 37.4 percent from the floor, which ranks seventh in the league. The Foresters are third in field goal percentage defense at 36.3 percent.

►Lake Forest is seventh in the league in 3-point shooting at 27.5 percent. The Foresters are holding opponents just 28.8 percent from beyond the arc, and that ranks sixth in the conference.

►The top 3-point shooter for Lake Forest is Abby Wiedman, who is averaging 1.4 3-pointers per game while shooting 40 percent (10-25) from beyond the arc.

Lawrence University Basketball Facts

Location	Appleton, Wis.
Founded	1847
Enrollment	1,450
President	Mark Burstein
Affiliation	NCAA Division III
Conference	Midwest Conference
Nickname	Vikings
School Colors	Blue and White
Home Arena	Alexander Gymnasium (1929, capacity 1,100)
Director of Athletics	Mike Szkodzinski
First season of basketball	1975-76
Seasons of basketball	38
All-time record	354-467 (.431)
Midwest Conference titles	2
1989-90, 1998-99	
Lake Michigan Conference titles	1
1988-89	
NCAA tournament appearances	1
1999	

CAREER SCORING LEADERS

1. 1,487 – Claire Getzoff, 2002-06
2. 1,225 – Sarah O'Neil, 1988-92
3. 1,186 – Felice Porrata, 2001-05
4. 1,105 – Jackie Huss, 1993-97
5. 975 – Katherine Lofgren, 1989-93
6. 965 – Krista Tomter, 1989-93
7. 956 – Kelly Mulcahy, 2004-08
8. 942 – Gina Seegers, 1988-92
9. 909 – Alex Deshler, 2010-14
10. 895 – Molly Lieberman, 1993-97
11. 868 – Carrie Van Groll, 2004-08
12. 866 – Dara Rakun, 1998-2002
13. 833 – Robin Chapman, 1979-83
14. 830 – Vicki Corbeil, 1976-79
15. 828 – Tracie Spangenberg, 1986-90
16. 808 – Joy Rogatzki, 1996-2000
17. 799 – Laura Aerts, 2006-10
18. 751 – Alisa Haase, 1992-96
19. 745 – Beth Pollnow, 1998-2002
20. 723 – Deb Jaryszak, 1978-82
21. 639 – Holly Skaer, 1988-91
22. 622 – Mindy Rueden, 1996-2000
23. 613 – Cathy Kaye, 2009-13
24. 598 – Amber Lisowe, 2011-14
25. 582 – Jenny Stoner, 2004-08

2014-15 Lawrence Basketball
Lawrence University Combined Team Statistics (as of Dec 08, 2014)
All games

RECORD:	OVERALL	HOME	AWAY	NEUTRAL
ALL GAMES	0-5	0-3	0-2	0-0
CONFERENCE	0-3	0-2	0-1	0-0
NON-CONFERENCE	0-2	0-1	0-1	0-0

#	Player	gp-gs	min	avg	Total		3-Point		F-Throw		Rebounds								a	to	blk	stl	pts	avg
					fg-fga	fg%	3fg-fga	3fg%	ft-fa	ft%	off	def	tot	avg	pf	dq								
24	Danelle Buck	5-5	152	30.4	12-34	.353	2-5	.400	11-19	.579	6	17	23	4.6	9	0	3	15	0	7	37	7.4		
20	Elizabeth Arco	4-4	78	19.5	11-27	.407	0-0	.000	3-6	.500	6	16	22	5.5	14	1	4	8	3	3	25	6.3		
14	Kassidy Rinehart	5-5	128	25.6	11-30	.367	0-0	.000	9-26	.346	7	11	18	3.6	15	1	10	20	0	3	31	6.2		
23	Andrea Wilkinson	5-2	132	26.4	13-28	.464	0-0	.000	4-10	.400	7	16	23	4.6	9	0	8	11	1	6	30	6.0		
42	Jeannine Schulz	5-4	133	26.6	9-27	.333	0-0	.000	5-10	.500	8	18	26	5.2	12	0	4	14	2	7	23	4.6		
15	Fanita Robins	5-3	110	22.0	7-28	.250	0-1	.000	8-11	.727	4	16	20	4.0	9	0	4	28	0	5	22	4.4		
12	Lauren Deveikis	5-0	80	16.0	6-21	.286	1-3	.333	2-2	1.000	2	3	5	1.0	4	0	2	4	0	0	15	3.0		
03	Natalie Kramer	5-2	107	21.4	5-21	.238	1-3	.333	2-3	.667	1	8	9	1.8	14	1	4	10	1	3	13	2.6		
05	Nicole Cummins	2-0	9	4.5	0-0	.000	0-0	.000	2-4	.500	1	1	2	1.0	0	0	0	3	0	0	2	1.0		
10	Olivia Hoesley	5-0	37	7.4	2-11	.182	1-6	.167	0-0	.000	0	0	0	0.0	2	0	0	5	0	0	5	1.0		
22	Bethany Hoster	5-0	34	6.8	0-4	.000	0-0	.000	4-5	.800	1	5	6	1.2	4	0	2	1	0	2	4	0.8		
Team											10	15	25				1							
Total.....		5	1000		76-231	.329	5-18	.278	50-96	.521	53	126	179	35.8	92	3	41	120	7	36	207	41.4		
Opponents.....		5	1000		118-295	.400	37-121	.306	45-73	.616	64	125	189	37.8	97	-	78	83	12	68	318	63.6		

TEAM STATISTICS

	LU	OPP
SCORING	207	318
Points per game	41.4	63.6
Scoring margin	-22.2	-
FIELD GOALS-ATT	76-231	118-295
Field goal pct	.329	.400
3 POINT FG-ATT	5-18	37-121
3-point FG pct	.278	.306
3-pt FG made per game	1.0	7.4
FREE THROWS-ATT	50-96	45-73
Free throw pct	.521	.616
F-Throws made per game	10.0	9.0
REBOUNDS	179	189
Rebounds per game	35.8	37.8
Rebounding margin	-2.0	-
ASSISTS	41	78
Assists per game	8.2	15.6
TURNOVERS	120	83
Turnovers per game	24.0	16.6
Turnover margin	-7.4	-
Assist/turnover ratio	0.3	0.9
STEALS	36	68
Steals per game	7.2	13.6
BLOCKS	7	12
Blocks per game	1.4	2.4
ATTENDANCE	1299	475
Home games-Avg/Game	3-433	2-238
Neutral site-Avg/Game	-	0-0

Date	Opponent		Score	Att.
11/15/14	at Concordia University Chicago	L	57-95	225
11/19/14	MARIAN UNIVERSITY	L	38-61	349
* 11/22/14	RIPON COLLEGE	L	40-41	522
* 12/03/14	BELOIT COLLEGE	L	31-51	428
* 12/06/14	at Illinois College	L	41-70	250

* - Conference game

Score by Periods	1st	2nd	Totals
Lawrence University	97	110	207
Opponents	156	162	318

2014-15 Lawrence Basketball
Lawrence University Points-Rebounds-Assists (as of Dec 08, 2014)
All games

				03	05	10	12	14	15	20
<u>Opponent</u>	<u>Date</u>	<u>Score</u>		<u>KRAMER,NAT</u>	<u>CUMMINS,NI</u>	<u>HOESLEY,OL</u>	<u>DEVEIKIS,L</u>	<u>RINEHART,K</u>	<u>ROBINS,FAN</u>	<u>ARCO,ELIZA</u>
at Concordia University	11/15/14	57-95	L	2-1-1	0-0-0	0-0-0	2-3-1	15-4-1	9-7-0	4-5-2
MARIAN UNIVERSITY	11/19/14	38-61	L	2-2-1	DNP	0-0-0	2-0-0	6-4-3	4-6-0	9-6-0
RIPON COLLEGE	11/22/14	40-41	L	5-3-2	DNP	0-0-0	5-0-0	1-0-1	0-2-2	8-10-1
BELOIT COLLEGE	12/03/14	31-51	L	0-1-0	DNP	0-0-0	2-0-1	5-6-3	4-3-1	4-1-1
at Illinois College	12/06/14	41-70	L	4-2-0	2-2-0	5-0-0	4-2-0	4-4-2	5-2-1	DNP

				22	23	24	42
<u>Opponent</u>	<u>Date</u>	<u>Score</u>		<u>HOSTER,BET</u>	<u>WILKINSON,</u>	<u>BUCK,DANEL</u>	<u>SCHULZ,JEAN</u>
at Concordia University	11/15/14	57-95	L	2-2-0	4-6-2	8-2-0	11-5-1
MARIAN UNIVERSITY	11/19/14	38-61	L	1-2-0	4-2-2	2-3-1	8-3-0
RIPON COLLEGE	11/22/14	40-41	L	1-0-1	9-6-2	11-7-0	0-3-1
BELOIT COLLEGE	12/03/14	31-51	L	0-1-0	8-6-2	6-4-0	2-5-2
at Illinois College	12/06/14	41-70	L	0-1-1	5-3-0	10-7-2	2-10-0

2014-15 GAME RECAPS

November 15

Concordia Chicago 95, Lawrence 57

RIVER FOREST, Ill. — The Concordia University Chicago women's basketball team got



off to a fast start and rolled to a 95-57 nonconference victory over Lawrence University at Geiseman Gymnasium.

Lauren Orr scored a game-high 20 points off the bench to pace the Cougars (1-0) and was one of four players in double figures. Miranda Rogers added 16 points for Concordia.

Kassidy Rinehart paced Lawrence (0-1) with 15 points and hit 6-of-7 shots from the floor. Jeannine Schulz added 11 points off the bench for the Vikings. Fanita Robins added nine points and a game-high seven rebounds for the Vikings.

The Cougars jumped out to a 16-4 lead in the first seven minutes and pulled away from there. Concordia pushed the lead to 44-16 at the half.

Lawrence played a much stronger second half by hitting 16-of-28 shots from the floor (57.1 percent) on the way to 41 points after the break.

Concordia shot 47.4 percent from the floor during the game and connected on 15-of-33 attempts from 3-point range.

November 19

Marian 61, Lawrence 38

APPLETON, Wis.

-- The Marian University women's basketball team built a big first-half lead and



went on to a 61-38 nonconference victory over Lawrence University at Alexander Gymnasium.

Amelia Mirsberger led Marian (1-0) and all scorers with 18 points as she hit 6-of-8 shots from the floor and went 4-for-4 from the foul line. Sarah Olewinski added 12 points for the Sabres.

Elizabeth Arco paced the Vikings

(0-2) with nine points and six rebounds, and Jeannine Schulz added eight points.

Marian trailed early but went on an 18-2 run in the first half to pull out to a 20-7 lead with 9:14 left in the first half. Mirsberger scored nine points in the first half as the Sabres built a 32-16 advantage at the break.

The Vikings chipped away at the lead over the first nine minutes of the second half. Lawrence outscored the Sabres 13-8 to open the half, capped by Arco's layup, to trim the lead to 40-29. Arco scored four points in that run and Schulz had three.

Marian responded by going on a 16-4 run to grab a 56-33 lead and seal the victory.

November 22

Ripon 41, Lawrence 40

APPLETON, Wis. -- The Lawrence University

women's basketball team scored just one point over the final 11 minutes and endured a horrendous afternoon at the foul line in a 41-40 Midwest Conference loss to Ripon College at Alexander Gymnasium.



Ripon (1-2, 1-0 MWC) got two free throws from Meg Ryan with 30 seconds left to take the lead, and freshman guard Lauren Deveikis missed a jumper with five seconds left that would have won it for Lawrence (0-3, 0-1).

Both teams had a rough time at the foul line as Lawrence connected on only 9-of-22 from the stripe and Ripon hit just 9-of-21.

Freshman Danelle Buck led Lawrence with 11 points and she picked up seven rebounds. Freshman forward Elizabeth Arco pulled down 10 rebounds and added eight points for the Vikings. Andrea Wilkinson chipped in with nine points for the Vikings.

Ryan, McKenzie Banasik and Nicole Herkert scored 10 points apiece to pace Ripon, and Herkert had a

game-high 13 rebounds.

Lawrence led throughout most of the contest as the Vikings took their first lead at 7-5 on Arco's three-point play with 13:15 left in the first half. Lawrence would build that advantage to as much as nine points before the Red Hawks trimmed the lead to 28-22 at the half.

The Vikings grabbed their biggest lead of the game by going on a 6-0 run, capped by Natalie Kramer's layup and an Arco free throw with 11:07 left, for a 39-27 edge.

Ripon began chipping away at the advantage as the Vikings went ice cold from the floor and the foul line. Lawrence finished the game by going 0-for-11 from the floor and 1-for-5 from the line.

Lawrence's only points in that stretch came on Kassidy Rinehart's free throw with 4:51 remaining that gave the Vikings a 40-35 lead. Ripon got a layup from Chelsea Moldenhauer and a couple of free throws from Banasik to cut the lead to 40-39.

The Vikings then committed three consecutive turnovers before fouling Ryan. She hit both free throws to give Ripon the lead for good.

December 3

Beloit 51, Lawrence 31

APPLETON, Wis.

-- The Lawrence University women's basketball team endured a scoring



drought that lasted nearly 12 minutes in a 51-31 Midwest Conference loss to Beloit College at Alexander Gymnasium.

Lana Wieseman led Beloit (3-3, 2-1 MWC) with 18 points and nine rebounds, and Laura Panicali added 13 points and nine boards.

Andrea Wilkinson came off the bench to score eight points for the Vikings (0-4, 0-2). The Vikings hit just 12-of-51 shots (23.5 percent) from the floor.

Lawrence had battled back in the

2014-15 GAME RECAPS

first half and tied the game at 16-16 on Kassidy Rinehart's jumper with 6:43 left in the first half. The Bucs would finish the first half on a 13-0 run, capped by Panicali's layup with 28 seconds left, to take a 29-16 lead at the half.

Lawrence finally broke the scoring drought on a layup by Danelle Buck, who finished with six points, with 14:45 left in the game. That started an 8-2 run for the Vikings, capped by back-to-back baskets from Buck, that trimmed Beloit's lead to 33-24 with 13:20 left.

The Bucs responded by scoring 16 of the game's next 20 points to grab a 49-28 lead with 6:07 left. Lawrence didn't get closer than 18 points the rest of the way.

Lawrence never got closer than 17 points the rest of the way.

December 6

Illinois College 70, Lawrence 41

JACKSONVILLE, Ill. -- Reigning league Player of the Year Hannah McGinnis posted a double-double to lead the Illinois



College women's basketball team to a 70-41 league Midwest Conference victory over Lawrence University at Sherman Gymnasium.

McGinnis scored 19 points and grabbed 15 rebounds to go with four assists to lead the Lady Blues (4-2, 2-0 MWC).

Danelle Buck paced Lawrence (0-5, 0-3) with 10 points, and she grabbed seven rebounds. Jeannine Schulz picked up a team-high 10 rebounds for the Vikings.

Lawrence trailed by double digits twice in the first half before trimming Illinois College's lead to 29-21 at the half.

The Lady Blues led 35-25 early in the second half after Buck's jumper with 16:35 left. Illinois College then went on a 17-7 run over the next six minutes to expand the advantage to 52-32 with 10:48 remaining.