



Lawrence University (0-15, 0-11 MWC) vs. Lake Forest College (7-9, 7-5 MWC)

Tuesday, Jan. 27, 5:30 p.m.

vs. Knox College (7-9, 5-6 MWC)

Saturday, Jan. 31, 1:00 p.m.



2014-15 LAWRENCE SCHEDULE

Date	Opponent	Time/Res.
11/15	at Concordia (Ill.)	L, 95-57
11/19	Marian	L, 61-38
11/22	Ripon	L, 41-40
12/3	Beloit	L, 51-31
12/6	at Illinois College	L, 70-41
12/9	at Lake Forest	L, 52-37
12/13	vs. Whittier	L, 68-54
12/14	at UC-Santa Cruz	L, 57-35
1/3	at Grinnell	L, 63-48
1/7	St. Norbert	L, 88-34
1/10	at Monmouth	L, 96-41
1/13	Carroll	L, 58-34
1/17	Cornell	L, 64-50
1/21	at Ripon	L, 47-39
1/24	at Knox	L, 123-71
1/27	Lake Forest	5:30 pm
1/31	Knox	1:00 pm
2/4	at St. Norbert	5:30 pm
2/7	Illinois College	1:00 pm
2/10	at Beloit	5:30 pm
2/16	Maranatha Baptist	6:00 pm
2/18	at Carroll	5:30 pm
2/21	Monmouth	1:00 pm
2/27-28	MWC Tournament	TBA

Home games in bold



PROBABLE STARTERS

Lawrence

Forward	Andrea Wilkinson	Jr.	6-0
Forward	Elizabeth Arco	Fr.	6-1
Forward	Danelle Buck	Fr.	5-10
Guard	Olivia Hoesley	Fr.	5-8
Guard	Lauren Deveikis	Fr.	5-4

Lake Forest

Forward	Brie Maikowski	So.	6-0
Forward	K.C. Stralka	Jr.	6-0
Guard	Danielle Canulli	Sr.	5-8
Guard	Jenna Rice	Sr.	5-5
Guard	Michelle Ricolcol	Jr.	5-9

Knox

Guard	Becky Duffy	Sr.	5-8
Guard	Sandra Gavazzi	Jr.	5-8
Guard	Jessica Howard	Sr.	5-8
Guard	Jamie Blue	Jr.	5-9
Guard	Jodi Marver	Sr.	5-6



SCHEDULE

►The Vikings host Lake Forest on Tuesday in a 5:30 p.m. Midwest Conference contest at Alexander Gymnasium.

►Lawrence then faces Midwest Conference rival Knox for the second time in a week when the Prairie Fire come to Alexander Gymnasium at 1 p.m. on Saturday.

VIDEO WEBCAST

►Both games feature a free video webcast and are available at: <http://portal.stretchinternet.com/lawrence/>. Dick Knapinski and Anthony Totoraitis are on the call for Lawrence home games. A link for the webcast is available on the Lawrence women's basketball page.

THE COACHES

►Ashley Wellman (Alma 2008) is in her second season at Lawrence and has a record of 3-35 (.079).

►Tamlyn Tills (UW-La Crosse 1982) is in her seventh season at Lake Forest and has a record of 78-78 (.500). She is in her 20th season overall and has a record of 214-285 (.429).

►Emily Cline (Cornell 2001) is in her seventh season at Knox and has a record of 48-106 (.312).

THE SERIES

►Lake Forest holds a 46-13 edge over Lawrence in a series that dates back to the 1975-76 season. The Foresters



Ashley Wellman

have won 15 straight against the Vikings.

▶Lawrence has a 19-15 advantage against Knox in a series that started in the 1989-90 season. The teams split the two games a season ago.

LAST GAME

Knox hit a school-record 18 3-pointers en route to a 123-71 Midwest Conference victory over Lawrence this past Saturday at Memorial Gymnasium.

The 123 points also set a school record for the Prairie Fire.

Jessica Howard hit seven 3-pointers on her way to a game-high 28 points for Knox. Jodi Marver added 19 points for Knox and was one of four players scoring in double figures.

Knox hit 18-of-48 from beyond the arc and also went 25-for-34 from the foul line.

Danelle Buck led Lawrence with 12 points, and she pulled down seven rebounds. Andrea Wilkinson added 11 points and six rebounds, and Patsy Kealey had 10 points and six boards.

Lawrence led 13-12 after Elizabeth Arco's jumper with 13 minutes left in the first half, but Knox went on a 14-3 run to grab a 26-16 advantage.

Lawrence trimmed the lead back to six and trailed by nine points when Knox finished the final 5:21 of the first half on a 22-8 run. The Prairie Fire led 57-34 at the break.

Knox steadily increased its lead and its biggest advantage was the 52-point final margin.

VIKINGS UPDATE

▶Lawrence looks to rebound from a rough performance at Knox after turning the ball over a school-record 44 times against the Prairie Fire.



▶Lawrence freshman forward Danelle Buck (Newton, Wis./Valders) leads the Vikings in scoring at 8.8 points per game. Buck has scored in double figures



MWC Standings

	MWC		Overall	
	W	L	W	L
St. Norbert	10	1	13	3
Carroll	9	2	12	4
Illinois College	7	4	10	6
Cornell	7	5	9	8
Lake Forest	7	5	7	9
Monmouth	6	5	7	9
Grinnell	5	6	7	9
Knox	5	6	7	9
Beloit	4	8	5	12
Ripon	2	9	2	14
Lawrence	0	11	0	15

Games Tuesday

Lake Forest at Lawrence
 Illinois College at Grinnell
 Ripon at St. Norbert
 Monmouth at Knox
 Carroll at Beloit

Games Saturday

Knox at Lawrence
 Grinnell at Ripon
 Illinois College at Cornell
 Carroll at St. Norbert
 Monmouth at Lake Forest

ures in five of her last seven games and a total of seven times this season. Buck has the top 3-point shooting percentage on the team at 36.4 percent. She is shooting 44.3 percent overall, and that ranks second on the team.

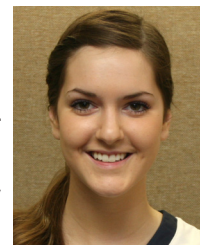


Danelle Buck

▶Freshman forward Elizabeth Arco (Bartlett, Ill./Barlett) is second on the team at 8.1 points per game. She also leads the team at 5.9 rebounds per

contest. Arco also has a team-best 12 blocks.

▶Rookie guard Olivia Hoesley (Eau Claire, Wis./North) has seen her role grow over the last five games. In that stretch, Hoesley is averaging a team-best 10.2 points per game while shooting 41.7 percent from the floor.



Olivia Hoesley

▶The Vikings rank 11th in the Midwest Conference in scoring at 43.2 points per game. Lawrence is ninth in scoring defense at 69.1 points per contest.

▶The Vikings are shooting 34.3 percent from the floor, which ranks ninth in the league. Lawrence is seventh in field goal percentage defense at 39.7 percent.

▶Lawrence ranks 11th in the league in free-throw shooting at 52.2 percent.

▶The Vikings are ninth in the league in 3-point shooting at 24.2 percent. Lawrence is ninth in defending the 3-pointer at 31.6 percent.

SCOUTING LAKE FOREST

▶Lake Forest enters Tuesday's game on a roll with three consecutive wins. The Foresters topped Ripon 71-57 and followed that with a 73-65 win at Beloit. Lake Forest then downed Cornell 51-49 this past Saturday.



▶With the three straight wins, the Foresters are right back into the race for a berth in the four-team Midwest Conference Tournament. Lake Forest is currently tied for fourth place with Cornell at 7-5.

▶Guard Danielle Canulli is the only Lake Forest player averaging double figures in points. Canulli is at 10.5

points per game this season.

▶Lake Forest's balanced offensive attack has four players averaging at least 6.8 points per game.

▶Guard Abby Wiedman is Lake Forest's top 3-point shooter with 16 made this season. Wiedman is shooting 27.6 percent from beyond the arc.

▶Guard Jenna Rice is second in the Midwest Conference at 4.1 assists per game.

▶K.C. Stralka leads the Foresters in rebounding at 5.9 per game.

▶Lake Forest is scoring 55.2 points per game, and that ranks ninth in the league. The Foresters are sixth in the conference in scoring defense at 63.8 points per game.

▶Lake Forest is shooting 37.6 percent from the floor, good for eighth in the league. The Foresters are third in field goal percentage defense at 35.6 percent.

▶Lake Forest is shooting 62.3 percent from the foul line, and that ranks 10th in the conference.

▶Lake Forest is shooting 26.3 percent from 3-point range, and that is seventh in the conference. The Foresters are fifth in defending the 3-pointer at 27.6 percent.

SCOUTING KNOX

▶Knox takes on big rival Monmouth on Tuesday before the  Prairie Fire travels to Lawrence on Saturday. Knox's win over Lawrence this past Saturday snapped a two-game losing streak for the Prairie Fire.

▶Guard Jodi Marver leads the high-scoring Prairie Fire at 13.9 points per game, which ranks sixth in the league.

Lawrence University Basketball Facts

Location	Appleton, Wis.
Founded	1847
Enrollment	1,450
President	Mark Burstein
Affiliation	NCAA Division III
Conference	Midwest Conference
Nickname	Vikings
School Colors	Blue and White
Home Arena	Alexander Gymnasium (1929, capacity 1,100)
Director of Athletics	Mike Szkodzinski
First season of basketball	1975-76
Seasons of basketball	38
All-time record	354-477 (.426)
Midwest Conference titles	2
1989-90, 1998-99	
Lake Michigan Conference titles	1
1988-89	
NCAA tournament appearances	1
1999	

Marver also ranks fourth in the conference at 3.4 assists per game.

▶Knox set school records with 123 points and 18 3-pointers in its win over Lawrence.

▶Knox, which plays a style similar to the Grinnell men, ranks first in the conference at 90.8 points per game, and the Prairie Fire is last in scoring defense at 89.6 points per contest.

▶Knox is shooting 33.2 percent from the floor, which is 10th in the league. Knox ranks last in the league in field goal percentage defense at 45.1 percent.

▶Knox ranks eighth in the league in free-throw shooting at 63.3 percent.

▶Knox is shooting 25.7 percent from beyond the arc, which ranks eighth in the league. The Prairie Fire is first in the league in defending the 3-pointer at 22.3 percent.

CAREER SCORING LEADERS

- 1,487 – Claire Getzoff, 2002-06
- 1,225 – Sarah O'Neil, 1988-92
- 1,186 – Felice Porrata, 2001-05
- 1,105 – Jackie Huss, 1993-97
- 975 – Katherine Lofgren, 1989-93
- 965 – Krista Tomter, 1989-93
- 956 – Kelly Mulcahy, 2004-08
- 942 – Gina Seegers, 1988-92
- 909 – Alex Deshler, 2010-14
- 895 – Molly Lieberman, 1993-97
- 868 – Carrie Van Groll, 2004-08
- 866 – Dara Rakun, 1998-2002
- 833 – Robin Chapman, 1979-83
- 830 – Vicki Corbeil, 1976-79
- 828 – Tracie Spangenberg, 1986-90
- 808 – Joy Rogatzki, 1996-2000
- 799 – Laura Aerts, 2006-10
- 751 – Alisa Haase, 1992-96
- 745 – Beth Pollnow, 1998-2002
- 723 – Deb Jaryszak, 1978-82
- 639 – Holly Skaer, 1988-91
- 622 – Mindy Rueden, 1996-2000
- 613 – Cathy Kaye, 2009-13
- 598 – Amber Lisowe, 2011-14
- 582 – Jenny Stoner, 2004-08

2014-15 Lawrence Basketball
Lawrence University Combined Team Statistics (as of Jan 26, 2015)
All games

RECORD:	OVERALL	HOME	AWAY	NEUTRAL
ALL GAMES	0-15	0-6	0-8	0-1
CONFERENCE	0-11	0-5	0-6	0-0
NON-CONFERENCE	0-4	0-1	0-2	0-1

#	Player	gp-gs	min	avg	Total		3-Point		F-Throw		Rebounds			pf	dq	a	to	blk	stl	pts	avg			
					fg-fga	fg%	3fg-fga	3fg%	ft-fa	ft%	off	def	tot									avg		
24	Danelle Buck	13-12	376	28.9	43-97	.443	4-11	.364	24-43	.558	21	46	67	5.2	25	0	11	44	4	14	114	8.8		
20	Elizabeth Arco	11-10	247	22.5	40-98	.408	0-0	.000	9-25	.360	13	52	65	5.9	41	4	13	33	12	9	89	8.1		
23	Andrea Wilkinson	13-10	362	27.8	36-81	.444	0-0	.000	6-13	.462	14	49	63	4.8	20	0	17	38	5	11	78	6.0		
14	Kassidy Rinehart	15-14	405	27.0	28-90	.311	0-1	.000	16-42	.381	35	30	65	4.3	42	2	26	67	0	18	72	4.8		
10	Olivia Hoesley	15-4	243	16.2	27-72	.375	13-43	.302	3-6	.500	4	13	17	1.1	9	0	6	21	0	6	70	4.7		
42	Jeannine Schulz	10-8	259	25.9	15-52	.288	0-1	.000	12-20	.600	12	38	50	5.0	19	0	5	19	3	13	42	4.2		
02	Patsy Kealey	7-2	120	17.1	10-36	.278	0-6	.000	8-11	.727	11	14	25	3.6	22	0	16	17	0	4	28	4.0		
03	Natalie Kramer	13-9	304	23.4	16-56	.286	4-15	.267	8-9	.889	2	21	23	1.8	26	1	16	36	1	10	44	3.4		
15	Fanita Robins	13-4	212	16.3	12-52	.231	0-4	.000	19-26	.731	8	28	36	2.8	21	0	10	58	2	11	43	3.3		
12	Lauren Deveikis	15-2	217	14.5	12-54	.222	2-11	.182	4-8	.500	6	7	13	0.9	13	0	10	18	0	5	30	2.0		
40	Katie Schumacher	4-0	35	8.8	3-8	.375	0-0	.000	2-5	.400	4	6	10	2.5	4	0	0	5	1	2	8	2.0		
05	Nicole Cummins	7-0	45	6.4	3-12	.250	0-3	.000	5-12	.417	2	3	5	0.7	8	0	2	10	0	3	11	1.6		
22	Bethany Hoster	15-0	170	11.3	7-27	.259	0-0	.000	5-12	.417	14	24	38	2.5	20	0	14	16	4	6	19	1.3		
32	Margaret Johnson	2-0	5	2.5	0-0	.000	0-0	.000	0-0	.000	0	1	1	0.5	1	0	0	0	0	0	0	0.0		
Team											23	34	57											
Total.....		15	3000		252-735	.343	23-95	.242	121-232	.522	169	366	535	35.7	271	7	146	391	32	112	648	43.2		
Opponents.....		15	3000		367-924	.397	115-364	.316	187-270	.693	219	373	592	39.5	253	-	238	247	46	235	1036	69.1		

TEAM STATISTICS	LU	OPP	Date	Opponent	Score	Att.
SCORING	648	1036	11/15/14	at Concordia University Chicago	L 57-95	225
Points per game	43.2	69.1	11/19/14	MARIAN UNIVERSITY	L 38-61	349
Scoring margin	-25.9	-	* 11/22/14	RIPON COLLEGE	L 40-41	522
FIELD GOALS-ATT	252-735	367-924	* 12/03/14	BELOIT COLLEGE	L 31-51	428
Field goal pct	.343	.397	* 12/06/14	at Illinois College	L 41-70	250
3 POINT FG-ATT	23-95	115-364	* 12/09/14	at Lake Forest College	L 37-52	111
3-point FG pct	.242	.316	N 12/13/14	vs Whittier College	L 54-68	51
3-pt FG made per game	1.5	7.7	12/14/14	at UC Santa Cruz	L 35-57	68
FREE THROWS-ATT	121-232	187-270	* 1/3/15	at Grinnell College	L 48-63	391
Free throw pct	.522	.693	* 1/7/15	ST. NORBERT COLLEGE	L 34-88	367
F-Throws made per game	8.1	12.5	* 1/10/15	at Monmouth College	L 41-96	100
REBOUNDS	535	592	* 1/13/15	CARROLL UNIVERSITY	L 34-58	432
Rebounds per game	35.7	39.5	* 1/17/15	CORNELL COLLEGE	L 50-64	604
Rebounding margin	-3.8	-	* 1/21/15	at Ripon College	L 37-49	147
ASSISTS	146	238	* 1/24/15	at Knox College	L 71-123	375
Assists per game	9.7	15.9				
TURNOVERS	391	247				
Turnovers per game	26.1	16.5				
Turnover margin	-9.6	-				
Assist/turnover ratio	0.4	1.0				
STEALS	112	235				
Steals per game	7.5	15.7				
BLOCKS	32	46				
Blocks per game	2.1	3.1				
ATTENDANCE	2702	1718				
Home games-Avg/Game	6-450	8-208				
Neutral site-Avg/Game	-	1-51				

* - Conference game

Score by Periods	1st	2nd	Totals
Lawrence University	315	333	648
Opponents	504	532	1036

2014-15 Lawrence Basketball
Lawrence University Points-Rebounds-Assists (as of Jan 26, 2015)
All games

Opponent	Date	Score		02	03	05	10	12	14	15
				KEALEY,PAT	KRAMER,NAT	CUMMINS,NI	HOESLEY,OL	DEVEIKIS,L	RINEHART,K	ROBINS,FAN
at Concordia University	11/15/14	57-95	L	DNP	2-1-1	0-0-0	0-0-0	2-3-1	15-4-1	9-7-0
MARIAN UNIVERSITY	11/19/14	38-61	L	DNP	2-2-1	DNP	0-0-0	2-0-0	6-4-3	4-6-0
RIPON COLLEGE	11/22/14	40-41	L	DNP	5-3-2	DNP	0-0-0	5-0-0	1-0-1	0-2-2
BELOIT COLLEGE	12/03/14	31-51	L	DNP	0-1-0	DNP	0-0-0	2-0-1	5-6-3	4-3-1
at Illinois College	12/06/14	41-70	L	DNP	4-2-0	2-2-0	5-0-0	4-2-0	4-4-2	5-2-1
at Lake Forest College	12/09/14	37-52	L	DNP	5-5-2	2-0-0	5-2-1	0-3-1	6-2-1	0-2-0
vs Whittier College	12/13/14	54-68	L	DNP	10-3-2	DNP	2-1-1	2-0-1	5-4-3	12-2-2
at UC Santa Cruz	12/14/14	35-57	L	DNP	4-3-0	3-0-0	0-3-1	2-2-0	4-4-3	0-3-1
at Grinnell College	1/3/15	48-63	L	5-0-3	3-1-2	DNP	2-2-1	0-0-0	4-5-3	4-2-0
ST. NORBERT COLLEGE	1/7/15	34-88	L	6-5-3	0-0-0	DNP	5-0-0	1-1-0	6-5-0	1-1-0
at Monmouth College	1/10/15	41-96	L	4-7-1	4-0-4	DNP	13-3-1	3-0-1	2-8-1	0-1-2
CARROLL UNIVERSITY	1/13/15	34-58	L	3-5-3	3-0-0	0-0-0	9-1-0	0-0-0	4-3-2	2-4-1
CORNELL COLLEGE	1/17/15	50-64	L	0-1-2	DNP	DNP	10-1-0	2-1-2	3-9-1	DNP
at Ripon College	1/21/15	37-49	L	0-1-0	DNP	0-1-1	12-2-1	0-1-1	1-4-2	DNP
at Knox College	1/24/15	71-123	L	10-6-4	2-2-2	4-2-1	7-2-0	5-0-2	6-3-0	2-1-0

Opponent	Date	Score		20	22	23	24	32	40	42
				ARCO,ELIZA	HOSTER,BET	WILKINSON,	BUCK,DANEL	JOHNSON,MA	SCHUMACHER	SCHULZ,JEAN
at Concordia University	11/15/14	57-95	L	4-5-2	2-2-0	4-6-2	8-2-0	DNP	DNP	11-5-1
MARIAN UNIVERSITY	11/19/14	38-61	L	9-6-0	1-2-0	4-2-2	2-3-1	DNP	DNP	8-3-0
RIPON COLLEGE	11/22/14	40-41	L	8-10-1	1-0-1	9-6-2	11-7-0	DNP	DNP	0-3-1
BELOIT COLLEGE	12/03/14	31-51	L	4-1-1	0-1-0	8-6-2	6-4-0	DNP	DNP	2-5-2
at Illinois College	12/06/14	41-70	L	DNP	0-1-1	5-3-0	10-7-2	DNP	DNP	2-10-0
at Lake Forest College	12/09/14	37-52	L	DNP	2-2-0	6-9-2	7-6-1	DNP	DNP	4-7-0
vs Whittier College	12/13/14	54-68	L	DNP	0-7-0	DNP	17-10-1	DNP	DNP	6-8-1
at UC Santa Cruz	12/14/14	35-57	L	DNP	3-5-4	DNP	10-3-1	DNP	DNP	9-3-0
at Grinnell College	1/3/15	48-63	L	8-5-2	0-0-0	10-8-0	12-5-0	DNP	DNP	0-2-0
ST. NORBERT COLLEGE	1/7/15	34-88	L	6-2-1	2-1-0	0-1-0	3-0-0	0-1-0	4-2-0	0-4-0
at Monmouth College	1/10/15	41-96	L	7-7-0	2-6-1	6-2-0	DNP	0-0-0	0-1-0	DNP
CARROLL UNIVERSITY	1/13/15	34-58	L	4-5-0	2-7-2	5-3-1	DNP	DNP	2-1-0	DNP
CORNELL COLLEGE	1/17/15	50-64	L	19-6-3	0-0-1	6-3-2	10-5-0	DNP	DNP	DNP
at Ripon College	1/21/15	37-49	L	14-10-1	0-0-0	4-8-2	6-8-3	DNP	DNP	DNP
at Knox College	1/24/15	71-123	L	6-8-2	4-4-4	11-6-2	12-7-2	DNP	2-6-0	DNP

2014-15 GAME RECAPS

November 15

Concordia Chicago 95, Lawrence 57

RIVER FOREST, Ill. — The Concordia University Chicago women's basketball team got



off to a fast start and rolled to a 95-57 nonconference victory over Lawrence University at Geiseman Gymnasium.

Lauren Orr scored a game-high 20 points off the bench to pace the Cougars (1-0) and was one of four players in double figures. Miranda Rogers added 16 points for Concordia.

Kassidy Rinehart paced Lawrence (0-1) with 15 points and hit 6-of-7 shots from the floor. Jeannine Schulz added 11 points off the bench for the Vikings. Fanita Robins added nine points and a game-high seven rebounds for the Vikings.

The Cougars jumped out to a 16-4 lead in the first seven minutes and pulled away from there. Concordia pushed the lead to 44-16 at the half.

Lawrence played a much stronger second half by hitting 16-of-28 shots from the floor (57.1 percent) on the way to 41 points after the break.

Concordia shot 47.4 percent from the floor during the game and connected on 15-of-33 attempts from 3-point range.

November 19

Marian 61, Lawrence 38

APPLETON, Wis.

-- The Marian University women's basketball team built a big first-half lead and



went on to a 61-38 nonconference victory over Lawrence University at Alexander Gymnasium.

Amelia Mirsberger led Marian (1-0) and all scorers with 18 points as she hit 6-of-8 shots from the floor and went 4-for-4 from the foul line. Sarah Olewinski added 12 points for the Sabres.

Elizabeth Arco paced the Vikings

(0-2) with nine points and six rebounds, and Jeannine Schulz added eight points.

Marian trailed early but went on an 18-2 run in the first half to pull out to a 20-7 lead with 9:14 left in the first half. Mirsberger scored nine points in the first half as the Sabres built a 32-16 advantage at the break.

The Vikings chipped away at the lead over the first nine minutes of the second half. Lawrence outscored the Sabres 13-8 to open the half, capped by Arco's layup, to trim the lead to 40-29. Arco scored four points in that run and Schulz had three.

Marian responded by going on a 16-4 run to grab a 56-33 lead and seal the victory.

November 22

Ripon 41, Lawrence 40

APPLETON, Wis.

-- The Lawrence University women's basket-



ball team scored just one point over the final 11 minutes and endured a horrendous afternoon at the foul line in a 41-40 Midwest Conference loss to Ripon College at Alexander Gymnasium.

Ripon (1-2, 1-0 MWC) got two free throws from Meg Ryan with 30 seconds left to take the lead, and freshman guard Lauren Deveikis missed a jumper with five seconds left that would have won it for Lawrence (0-3, 0-1).

Both teams had a rough time at the foul line as Lawrence connected on only 9-of-22 from the stripe and Ripon hit just 9-of-21.

Freshman Danelle Buck led Lawrence with 11 points and she picked up seven rebounds. Freshman forward Elizabeth Arco pulled down 10 rebounds and added eight points for the Vikings. Andrea Wilkinson chipped in with nine points for the Vikings.

Ryan, McKenzie Banasik and Nicole Herkert scored 10 points apiece to pace Ripon, and Herkert had a

game-high 13 rebounds.

Lawrence led throughout most of the contest as the Vikings took their first lead at 7-5 on Arco's three-point play with 13:15 left in the first half. Lawrence would build that advantage to as much as nine points before the Red Hawks trimmed the lead to 28-22 at the half.

The Vikings grabbed their biggest lead of the game by going on a 6-0 run, capped by Natalie Kramer's layup and an Arco free throw with 11:07 left, for a 39-27 edge.

Ripon began chipping away at the advantage as the Vikings went ice cold from the floor and the foul line. Lawrence finished the game by going 0-for-11 from the floor and 1-for-5 from the line.

Lawrence's only points in that stretch came on Kassidy Rinehart's free throw with 4:51 remaining that gave the Vikings a 40-35 lead. Ripon got a layup from Chelsea Moldenhauer and a couple of free throws from Banasik to cut the lead to 40-39.

The Vikings then committed three consecutive turnovers before fouling Ryan. She hit both free throws to give Ripon the lead for good.

December 3

Beloit 51, Lawrence 31

APPLETON, Wis.

-- The Lawrence University women's basketball team



endured a scoring drought that lasted nearly 12 minutes in a 51-31 Midwest Conference loss to Beloit College at Alexander Gymnasium.

Lana Wieseman led Beloit (3-3, 2-1 MWC) with 18 points and nine rebounds, and Laura Panicali added 13 points and nine boards.

Andrea Wilkinson came off the bench to score eight points for the Vikings (0-4, 0-2). The Vikings hit just 12-of-51 shots (23.5 percent) from the floor.

Lawrence had battled back in the

2014-15 GAME RECAPS

first half and tied the game at 16-16 on Kassidy Rinehart's jumper with 6:43 left in the first half. The Bucs would finish the first half on a 13-0 run, capped by Panicali's layup with 28 seconds left, to take a 29-16 lead at the half.

Lawrence finally broke the scoring drought on a layup by Danelle Buck, who finished with six points, with 14:45 left in the game. That started an 8-2 run for the Vikings, capped by back-to-back baskets from Buck, that trimmed Beloit's lead to 33-24 with 13:20 left.

The Bucs responded by scoring 16 of the game's next 20 points to grab a 49-28 lead with 6:07 left. Lawrence didn't get closer than 18 points the rest of the way.

December 6

Illinois College 70, Lawrence 41

JACKSONVILLE, Ill. -- Reigning league Player of the Year Hannah McGinnis posted a double-double to lead the Illinois



College women's basketball team to a 70-41 league Midwest Conference victory over Lawrence University at Sherman Gymnasium.

McGinnis scored 19 points and grabbed 15 rebounds to go with four assists to lead the Lady Blues (4-2, 2-0 MWC).

Danelle Buck paced Lawrence (0-5, 0-3) with 10 points, and she grabbed seven rebounds. Jeannine Schulz picked up a team-high 10 rebounds for the Vikings.

Lawrence trailed by double digits twice in the first half before trimming Illinois College's lead to 29-21 at the half.

The Lady Blues led 35-25 early in the second half after Buck's jumper with 16:35 left. Illinois College then went on a 17-7 run over the next six minutes to expand the advantage to 52-32 with 10:48 remaining.

Lawrence never got closer than 17 points the rest of the way.

December 9

Lake Forest 52, Lawrence 37

LAKE FOREST, Ill. — The Lake Forest College women's basketball team pulled away late and posted a 52-37 Midwest Conference victory over Lawrence University.



Brie Majkowski scored 14 points and K.C. Stralka added 10 to pace the Foresters (3-5, 3-3 MWC).

Danelle Buck scored seven points and grabbed six rebounds for Lawrence (0-6, 0-4). Andrea Wilkinson and Kassidy Rinehart added six points apiece for the Vikings, and Wilkinson had a game-high nine rebounds.

Lawrence, which led by as many as five points in the first half, trailed 25-22 at the break. The Vikings got a three-point play from Rinehart to tie the score at 25-25 before the Foresters pulled out to a 35-27 edge.

Nicole Cummins then scored on a layup and Buck made a free throw to cut the margin back to 35-30 with 12:45 remaining. Lawrence was then hit by a scoring drought that lasted 7:40 as Lake Forest scored the game's next eight points for a 43-30 advantage.

Buck hit a pair of free throws with 5:05 left to cut the lead to 43-32, but Lawrence would get no closer the rest of the way.

December 13

Whittier 68, Lawrence 54

SANTA CRUZ, Calif. — The Whittier College women's basketball team pulled away midway through the second half and went on to a 68-54 nonconference victory over Lawrence University at the UC Santa Cruz Classic.



Priscilla Rodriguez scored 14 points and Ana Youngblood grabbed 12 rebounds to pace the Poets (3-3).

Freshman forward Danelle Buck picked up her first career double-double for Lawrence (0-7) with 17 points and 10 rebounds. Fanita Robins came off the bench to add 12 points for the Vikings.

It was a see-saw first half, and Lawrence pulled out to a 19-12 advantage. The Poets came back with a 17-3 run to take a 29-22 lead, but Lawrence answered back. The Vikings finished the first half on a 12-4 run, and Buck's jumper at the buzzer tied the game at 34-34 at the break.

The Poets scored the first seven points of the second half to grab a 41-34 edge with 16:09 remaining. After a Buck layup, Whittier got a layup from Erica Houston and back-to-back 3-pointers from Dannika Navales-Lugt to take a 49-36 lead with 11:12 left.

A layup from Kassidy Rinehart and a pair of free throws from Natalie Kramer cut Whittier's lead to 49-40 with 10:02 left. That's as close as the Vikings would get, and Whittier would go on to lead by as many as 16 points.

December 14

UC Santa Cruz 57, Lawrence 35

SANTA CRUZ, Calif. — The UC Santa Cruz women's basketball team held Lawrence University to only 13 first-half points and went on to a 57-35 nonconference win at the Santa Cruz Classic.

Leah Parrish scored 13 points, and Sara Crane grabbed a game-high 10 rebounds to lead the Banana Slugs (8-3).

Freshman forward Danelle Buck paced Lawrence (0-8) with 10 points.

Lawrence was limited to only two points in the first 5:53 of the contest as Santa Cruz jumped out to an 11-2 advantage. Lawrence didn't hit double digits for the game until Jeannine



2014-15 GAME RECAPS

Schulz's jumper with 2:35 remaining in the first half.

Santa Cruz led by as many as 24 points in the first half and held a 35-13 advantage at the break.

Lawrence cut the margin to 37-20 on Buck's layup with 14:29 remaining, but that's as close as the Vikings would get.

January 3

Grinnell 63, Lawrence 48

GRINNELL, Iowa — The Grinnell College women's basketball team turned back a second-half rally from Lawrence



University and went on to a 63-48 Midwest Conference victory at Darby Gymnasium.

Alissa Hirsh led Grinnell (4-6, 3-3 MWC) with 18 points, and Alex Neckopulos had a double-double for the Pioneers with 10 points and 15 rebounds.

Danelle Buck led Lawrence (0-9, 0-5) with 12 points, and Andrea Wilkinson added 10 points and a team-best eight rebounds.

Grinnell built a 15-point lead in the first half, but the Vikings chipped away by outscoring the Pioneers 16-10 over the final 9:31 of the first half.

The Pioneers led 35-26 at the break, but Lawrence scored the first seven points of the second half to trim the margin to 35-33. Elizabeth Arco had a three-point play, and Buck scored back-to-back baskets, the second with 15:52 left, to cut the lead to two.

Grinnell responded with a 10-0 run of its own to retake control of the game. Sophia Gatton's 3-pointer with 13:25 left gave the Pioneers a 45-33 advantage, but the Vikings fought back.

The Vikings countered by going on an 11-5 run, with the final six points coming on consecutive baskets from Wilkinson, to cut the lead to

50-44 with 9:24 left.

It was still a six-point game after Fanita Robins' layup for the Vikings cut the margin to 54-48 with 3:06 left. Grinnell then scored the game's final nine points to seal the victory.

January 7

St. Norbert 88, Lawrence 34

APPLETON, Wis. — The St. Norbert College women's basketball team pulled away early and rolled to an 88-34 Midwest Conference victory over Lawrence University at Alexander Gymnasium.



Regan Carmichael scored 16 points to lead five St. Norbert players in double figures. Heidi Van Sistine had a double-double for the Green Knights (10-2, 7-0 MWC) with 14 points and a game-high 10 rebounds.

Kassidy Rinehart, Elizabeth Arco and Patsy Kealey scored six points apiece to pace the Vikings (0-10, 0-6).

St. Norbert pulled out to a double-digit lead at 19-7 just 9:13 into the game. The Green Knights led by as many as 30 points in the first half and were up 40-10 at the half.

St. Norbert would lead by as many as 56 points in the second half on Megan McGoohan's 3-pointer with 47 seconds left in the game.

January 10

Monmouth 96, Lawrence 41

MONMOUTH, Ill. — The Monmouth College women's basket-



ball team jumped out to a big early lead and went on to a 96-41 Midwest Conference victory over Lawrence University at Glennie Gymnasium.

The Scots (4-8, 3-4 MWC) led by double digits at 17-6 just six minutes into the game and increased their advantage from there. Monmouth led 47-19 at the half.

Kelsey Walsberg scored 15 points to lead five Monmouth players in double figures.

Olivia Hoesley came off the bench to pace the Vikings (0-11, 0-7) with a career-high 13 points and her first double-digit scoring game. Hoesley hit a career-best three 3-pointers.

Kassidy Rinehart picked up a game-high eight rebounds for the Vikings, and Natalie Kramer picked up four assists.

January 13

Carroll 58, Lawrence 34

APPLETON, Wis.

— The Carroll University women's basketball team steadily pulled away in the second half and posted a 58-34 Midwest Conference victory over Lawrence University at Alexander Gymnasium.



Malory Christenson paced Carroll and all scorers with 15 points, and Julie Piech added 13 points for the Pioneers.

Olivia Hoesley, making her first career start for Lawrence, led the Vikings with nine points. Bethany Hoster grabbed a game-high seven rebounds for the Vikings.

Carroll (10-3, 7-1 MWC) led 28-18 at the half, and Lawrence (0-12, 0-8) never got closer than 11 points in the second half. A jumper from Andrea Wilkinson and an Elizabeth Arco layup cut Carroll's lead to 35-24 with 14:24 left in the contest.

Carroll then scored the game's next eight points to push the lead to 43-24 with 11:55 left. The Pioneers' biggest lead of the contest was the final margin.

Carroll won the game at the foul line by hitting 25-of-32 free throws. Lawrence, which turned the ball over 43 times, shot just 12 free throws in the contest. Carroll won despite hitting just 30.8 percent of its shots from the floor.

2014-15 GAME RECAPS

January 17

Cornell 64, Lawrence 50

APPLETON, Wis. — It took two-time defending Midwest Conference champion Cornell College the entire second half to put away a pesky Lawrence University women's basketball team by the score of 64-50 in a league game at Alexander Gymnasium.



Cornell (8-7, 6-4 MWC) led by just four at the half, and the Vikings (0-13, 0-9) were within striking distance until the final two minutes of the game.

Rikki Mulloy scored 17 points to pace the Rams, and Taylor Dicus added 14 points and eight rebounds.

Freshman Elizabeth Arco scored a game-high 19 points, grabbed six rebounds and picked up two blocks and two steals to pace Lawrence. Fellow rookies Olivia Hoesley and Danelle Buck added 10 points apiece for the Vikings, and Kassidy Rinehart pulled down a game-high nine rebounds.

Lawrence trailed by as many as eight points in the first half before scoring three consecutive baskets to cut the advantage to 17-15. Cornell pushed the lead back to seven, but the Vikings scored seven straight, including five from Buck, to tie the game at 24-24.

Cornell led 30-26 at the half, and the Rams extended the lead to 11 early in the second half. Lawrence trimmed the lead back to six points before the Rams stretched it back to 13 at 56-43. Lawrence kept chipping away and was still as close as nine points with less than two minutes left but couldn't get any closer.

January 21

Ripon 47, Lawrence 39

RIPON, Wis. — The Ripon College women's basketball team held off Lawrence University and posted a 47-39 Midwest Conference



victory at the Storzer Center.

Emma McDonald and Chelsea Moldenhauer had 11 points apiece to pace Ripon (2-14, 2-9 MWC), and McDonald grabbed a team-best nine rebounds.

Elizabeth Arco scored a game-high 14 points on 7-of-9 shooting and posted her first career double-double with a game-high 10 rebounds for the Vikings (0-14, 0-10). Olivia Hoesley added 12 points for Lawrence and went 4-for-7 from beyond the arc.

Lawrence led by as many as seven points in the first half, but Ripon rallied to take a 17-16 lead at the half.

Ripon stretched the lead to 35-25 with 10:36 left, but Hoesley drained a 3-pointer and Danelle Buck made a pair of free throws to trim the lead back to 35-30.

The Red Hawks responded by scoring the game's next six points to grab a 41-30 lead with 7:47 left. Lawrence cut the lead to six points twice after that but could get no closer.

January 24

Knox 123, Lawrence 71

G A L E S - BURG, Ill. — The Knox College women's basketball team hit a school-record 18 3-pointers en route to a 123-71 Midwest Conference victory over Lawrence University at Memorial Gymnasium.



The 123 points also set a school record for the Prairie Fire (7-9, 5-6 MWC).

Jessica Howard hit seven 3-pointers on her way to a game-high 28 points for Knox. Jodi Marver added 19 points for Knox and was one of four players scoring in double figures.

Knox hit 18-of-48 from beyond the arc and also went 25-for-34 from the foul line.

Danelle Buck led Lawrence (0-15, 0-11) with 12 points, and she pulled down seven rebounds. Andrea Wilkinson added 11 points and six rebounds,

and Patsy Kealey had 10 points and six boards.

Lawrence led 13-12 after Elizabeth Arco's jumper with 13 minutes left in the first half, but Knox went on a 14-3 run to grab a 26-16 advantage.

Lawrence trimmed the lead back to six and trailed by nine points when Knox finished the final 5:21 of the first half on a 22-8 run. The Prairie Fire led 57-34 at the break.

Knox steadily increased its lead and its biggest advantage was the 52-point final margin.