



**Lawrence University (0-17, 0-13 MWC)  
vs. St. Norbert College (15-3, 12-1 MWC)**

Wednesday, Feb. 4, 5:30 p.m.

**vs. Illinois College (11-7, 8-5 MWC)**

Saturday, Feb. 7, 1:00 p.m.



**2014-15 LAWRENCE SCHEDULE**

Date	Opponent	Time/Res.
11/15	at Concordia (Ill.)	L, 95-57
<b>11/19</b>	<b>Marian</b>	<b>L, 61-38</b>
<b>11/22</b>	<b>Ripon</b>	<b>L, 41-40</b>
<b>12/3</b>	<b>Beloit</b>	<b>L, 51-31</b>
12/6	at Illinois College	L, 70-41
12/9	at Lake Forest	L, 52-37
12/13	vs. Whittier	L, 68-54
12/14	at UC-Santa Cruz	L, 57-35
1/3	at Grinnell	L, 63-48
<b>1/7</b>	<b>St. Norbert</b>	<b>L, 88-34</b>
1/10	at Monmouth	L, 96-41
<b>1/13</b>	<b>Carroll</b>	<b>L, 58-34</b>
<b>1/17</b>	<b>Cornell</b>	<b>L, 64-50</b>
1/21	at Ripon	L, 47-39
1/24	at Knox	L, 123-71
<b>1/27</b>	<b>Lake Forest</b>	<b>L, 77-43</b>
<b>1/31</b>	<b>Knox</b>	<b>L, 94-80</b>
2/4	at St. Norbert	5:30 pm
<b>2/7</b>	<b>Illinois College</b>	<b>1:00 pm</b>
2/10	at Beloit	5:30 pm
<b>2/16</b>	<b>Maranatha Baptist</b>	<b>6:00 pm</b>
2/18	at Carroll	5:30 pm
<b>2/21</b>	<b>Monmouth</b>	<b>1:00 pm</b>
2/27-28	MWC Tournament	TBA

Home games in bold

**PROBABLE STARTERS**

**Lawrence**



Forward	Andrea Wilkinson	Jr.	6-0
Forward	Elizabeth Arco	Fr.	6-1
Forward	Danelle Buck	Fr.	5-10
Guard	Olivia Hoesley	Fr.	5-8
Guard	Lauren Deveikis	Fr.	5-4

**St. Norbert**



Forward	Tasha Giese	Sr.	5-10
Forward	Brianna Byrne	So.	5-10
Center	Heidi Van Sistine	Jr.	6-1
Guard	Jill Kleiman	So.	5-6
Guard	Rachel Hagge	Jr.	5-6

**Illinois College**



Forward	Hannah McGinnis	Sr.	5-10
Forward	Melissa Solorio	Fr.	5-11
Forward	Ashley Hoegger	So.	5-8
Guard	Maddy Keith	Sr.	5-10
Guard	Kate Russow	Sr.	5-7

**SCHEDULE**

▶The Vikings travel north on Highway 41 to face St. Norbert in a 5:30 p.m. game on Wednesday at Schuldes Sports Center.

▶The Vikings returns home to the friendly confines of Alexander Gymnasium on Saturday for a 1 p.m. game against Illinois College.

**VIDEO WEBCAST**

▶Both games feature a free video webcast and are available at: <http://portal.stretchinternet.com/lawrence/>. Dick Knapinski and Anthony Totoraitis are on the call for Lawrence home games. A link for the webcast is available on the Lawrence women's basketball page.

**THE COACHES**

▶Ashley Wellman (Alma 2008) is in her second season at Lawrence and has a record of 3-37 (.075).

▶Connie Tilley (UW-La Crosse 1974) is in her 38th season at St. Norbert and has a record of 624-280 (.690)

▶Lora Westling (Washburn 2005) is in her second season at Illinois College and has a record of 23-18 (.561).



Ashley Wellman

**THE SERIES**

▶St. Norbert holds a 67-13 lead over Lawrence in a series that goes back to the 1975-76 season, the Vikings' inaugural campaign. St. Norbert has won 19 consecutive games over the

Vikings.

►Lawrence holds an 18-17 edge over Illinois College in a series that goes back to the 1991-92 season. Illinois College has won three straight in the series since the teams split the season series in 2012-13.

### LAST GAME

Knox pulled away in the final five minutes and posted a 94-80 Midwest Conference win over Lawrence this past Saturday at Alexander Gymnasium.

Jodi Marver paced Knox with 20 points as she hit 14-of-18 free throws.

Elizabeth Arco led Lawrence with a game-high 29 points, and she picked up eight rebounds, five assists, four steals and two blocks. Patsy Kealey added 17 points and seven rebounds for the Vikings, and Andrea Wilkinson had 14 points and a game-high nine rebounds.

Knox won the game at the foul line as the Prairie Fire hit 32-of-50 foul shots. Lawrence, which went 18-for-29 from the line, was whistled for 32 fouls. Knox, which played a full-court press for the entire game, was called for 25 fouls.

Lawrence scored the first six points of the game and built its biggest lead at 19-11 on Arco's layup with 12:38 left in the first half. Knox then went on a 14-0 run to grab a 25-19 advantage with 11:06 left before the break.

Lawrence came back to take the lead at 36-35 on Danelle Buck's free throw with 3:47 left in the opening half. Knox rallied to grab a 45-41 lead at the break.

Knox pushed its lead to 71-59 on a pair of Carley Bechen free throws with 9:47 left in the game, but the Vikings rallied. Arco, Buck and Kealey all picked up baskets for the Vikings as Lawrence trimmed the margin to 74-69 with 6:01 left.

Lawrence was down 81-74 when the Prairie Fire hit four consecutive baskets, including a 3-pointer, to take control for good with a 90-76 lead



### MWC Standings

	MWC		Overall	
	W	L	W	L
St. Norbert	12	1	15	3
Carroll	10	3	13	5
Lake Forest	9	5	9	9
Illinois College	8	5	11	7
Cornell	8	5	10	8
Knox	7	6	9	9
Grinnell	6	7	8	10
Monmouth	6	7	7	11
Beloit	4	9	5	13
Ripon	2	11	2	16
Lawrence	0	13	0	17

### Games Wednesday

Lawrence at St. Norbert  
Grinnell at Monmouth  
Beloit at Illinois College  
Ripon at Carroll  
Knox at Cornell

### Games Saturday

Illinois College at Lawrence  
Carroll at Grinnell  
St. Norbert at Beloit  
Cornell at Ripon  
Knox at Lake Forest

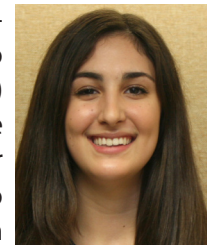
with 2:11 left.

### VIKINGS UPDATE

►Lawrence begins a difficult stretch of games to finish the season when it travels to St. Norbert on Wednesday. The Vikings face three teams in the top four spots in the Midwest Conference standings in their final five league games. Lawrence also has a nonconference game with Maranatha Baptist squeezed in there as well.



►Freshman forward Elizabeth Arco (Bartlett, Ill./Barlett) is coming off the biggest game of her rookie season. Arco scored a career-high 29 points in Lawrence's game against Knox. The 29 points also is a high for a Lawrence player this season, easily eclipsing the 19 Arco scored vs. Cornell on Jan. 17. Arco also picked up eight rebounds, five assists, two blocks and four steals against Knox.



Elizabeth Arco

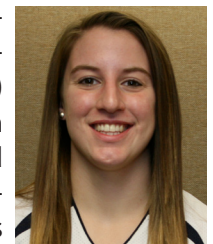
►Arco is now the Vikings' leading scorer at 9.2 points per game. She also leads the team at 5.8 rebounds per game. Arco is tops on the squad at 1.1 blocks per game.

►Junior guard Patsy Kealey (New Rochelle, N.Y.) scored a season-high 17 points against Knox. Kealey, who returned to the team from injury on Jan. 3, has scored in double figures in two of the last three games. She also matched her season high with seven rebounds. Kealey is now at 5.0 points and 3.6 rebounds per game this season.



Patsy Kealey

►Junior forward Andrea Wilkinson (Racine, Wis./Lutheran) scored a season-high 14 points and pulled down a season-best nine rebounds against Knox. It marked the second time in three games that Wilkinson had scored in double figures. She improved her season averages to 6.4 points and 5.1 rebounds per game.



Andrea Wilkinson

►The Knox game marked the second time this season Lawrence has had three players score in double figures.

Lawrence did it in January at Knox as well.

▶The Vikings rank 11th in the Midwest Conference in scoring at 45.4 points per game. Lawrence is ninth in scoring defense at 71.0 points per contest.

▶The Vikings are shooting 34.4 percent from the floor, which ranks ninth in the league. Lawrence is seventh in field goal percentage defense at 40.2 percent.

▶Lawrence ranks 11th in the league in free-throw shooting at 52.4 percent.

▶The Vikings are 10th in the league in 3-point shooting at 24.0 percent. Lawrence is ninth in defending the 3-pointer at 31.6 percent.

### SCOUTING ST. NORBERT

▶St. Norbert has won eight of its last nine games and is in the driver's seat in the Midwest Conference standings. The Green Knights are two games ahead of second-place Carroll in the league standings. St. Norbert is currently on a two-game win streak and recorded a 75-62 win over Carroll this past Saturday to post a season series sweep of the Pioneers.



▶St. Norbert's balanced attack is paced by guard Brianna Byrne, who is averaging 12.6 points per game. Center Heidi Van Sistine (10.6) and Regan Carmichael (10.8) are also averaging in double figures. St. Norbert has seven players averaging at least 6.9 points per contest.

▶Forward Tasha Giese is tops on the team in rebounding at 6.0 per game, and Van Sistine is at 5.9.

▶Guard Jill Kleiman is averaging a team-best 3.1 assists per game, while Rachel Hagge is at 2.9 and Bryne is at 2.7. Kleiman, who is averaging 9.9

Lawrence University Basketball Facts	
Location	Appleton, Wis.
Founded	1847
Enrollment	1,450
President	Mark Burstein
Affiliation	NCAA Division III
Conference	Midwest Conference
Nickname	Vikings
School Colors	Blue and White
Home Arena	Alexander Gymnasium (1929, capacity 1,100)
Director of Athletics	Mike Szkodzinski
First season of basketball	1975-76
Seasons of basketball	38
All-time record	354-479 (.425)
Midwest Conference titles	2
1989-90, 1998-99	
Lake Michigan Conference titles	1
1988-89	
NCAA tournament appearances	1
1999	

points per game, also paces the team in 3-point shooting at 43.0 percent (22-for-59).

▶St. Norbert is first in the league in scoring defense at 51.4 points per game. The Green Knights are fourth in scoring offense at 68.2.

▶St. Norbert is shooting 45.3 percent from the floor, which ranks first in the league. St. Norbert is second in field goal percentage defense at 34.0 percent.

▶The Green Knights are converting at a 66 percent clip from the foul line, which is good for fifth in the conference.

▶The Green Knights are shooting 28.9 percent from beyond the arc, and that's fourth in the league. St. Norbert ranks sixth in the league in defending the 3-pointer at 27.8 percent.

CAREER SCORING LEADERS	
1.	1,487 – Claire Getzoff, 2002-06
2.	1,225 – Sarah O'Neil, 1988-92
3.	1,186 – Felice Porrata, 2001-05
4.	1,105 – Jackie Huss, 1993-97
5.	975 – Katherine Lofgren, 1989-93
6.	965 – Krista Tomter, 1989-93
7.	956 – Kelly Mulcahy, 2004-08
8.	942 – Gina Seegers, 1988-92
9.	909 – Alex Deshler, 2010-14
10.	895 – Molly Lieberman, 1993-97
11.	868 – Carrie Van Groll, 2004-08
12.	866 – Dara Rakun, 1998-2002
13.	833 – Robin Chapman, 1979-83
14.	830 – Vicki Corbeil, 1976-79
15.	828 – Tracie Spangenberg, 1986-90
16.	808 – Joy Rogatzki, 1996-2000
17.	799 – Laura Aerts, 2006-10
18.	751 – Alisa Haase, 1992-96
19.	745 – Beth Pollnow, 1998-2002
20.	723 – Deb Jaryszak, 1978-82
21.	639 – Holly Skaer, 1988-91
22.	622 – Mindy Rueden, 1996-2000
23.	613 – Cathy Kaye, 2009-13
24.	598 – Amber Lisowe, 2011-14
25.	582 – Jenny Stoner, 2004-08

## SCOUTING ILLINOIS COLLEGE

▶Illinois College is in a battle with Lake Forest, Cornell and Knox for a berth in the four-team Midwest Conference Tournament. The Lady Blues are tied for fourth place in the standings, one-half game behind Lake Forest and one game ahead of Knox. Illinois College hosts Beloit before it travels to Lawrence on Saturday. The Lady Blues then finish with two of their final three games at home.



▶The Lady Blues are coming off a 64-49 loss at Cornell last Saturday and have lost two of their last three games.

▶Illinois College has the defending Midwest Conference Player of the Year in Hannah McGinnis. She leads the league in scoring at 20.0 points per game. She also paces the conference in rebounding at 13.7 per contest.

▶Forward Melissa Solorio is also in double figures at 11.6 points per game.

▶Illinois College is scoring 65.7 points per game, which ranks sixth in the Midwest Conference. The Lady Blues are fifth in scoring defense at 62.2 points per contest.

▶Illinois College is shooting 39.6 percent from the floor, which ranks fifth in the league. The Lady Blues are fourth in field goal percentage defense at 38.1 percent.

▶Illinois College is shooting 64.2 percent from the foul line, and that ranks seventh in the league.

▶Illinois College is shooting 27.3 percent from beyond the arc, good for sixth in the league. Illinois College is third in defending the 3-pointer at 25.6 percent.



### D3HOOPS.COM TOP 25

Rnk	Team	Rec.	Pts.	Pr.
1.	FDU-Florham (22)	19-0	622	1
2.	Thomas More (2)	19-0	600	2
3.	St. Thomas	19-0	570	3
4.	George Fox (1)	19-0	535	5
5.	Tufts	18-1	534	4
6.	Calvin	19-0	481	7
7.	Washington U.	17-1	464	9
8.	New York University	17-1	460	8
9.	Montclair State	19-1	429	10
10.	DePauw	18-1	401	11
11.	Texas-Tyler	19-1	320	12
12.	Amherst	18-2	318	6
13.	Hope	18-2	311	13
14.	Scranton	18-2	292	14
15.	Transylvania	18-1	268	15
16.	Wheaton (Ill.)	18-2	259	16
17.	Whitworth	18-1	245	17
18.	Salisbury	18-1	214	18
19.	Maryville (Tenn.)	17-1	186	20
20.	Bowdoin	19-2	161	24
21.	UW-Oshkosh	16-3	119	23
22.	Puget Sound	15-3	72	22
23.	John Carroll	17-2	64	19
24.	North Central (Ill.)	18-2	56	21
25.	Williams	16-4	38	25

**Dropped out:** None.

**Others receiving votes:** Cabrini 29; McDaniel 17; St. Vincent 11; Eastern Mennonite 9; Texas-Dallas 7; Claremont-Mudd-Scripps 7; Stevenson 6; Trinity (Texas) 6; Baldwin Wallace 5; Eastern 4; Stevens 4; Bethel 1.

**2014-15 Lawrence Basketball**  
**Lawrence University Combined Team Statistics (as of Feb 04, 2015)**  
**All games**

<b>RECORD:</b>	<b>OVERALL</b>	<b>HOME</b>	<b>AWAY</b>	<b>NEUTRAL</b>
ALL GAMES	0-17	0-8	0-8	0-1
CONFERENCE	0-13	0-7	0-6	0-0
NON-CONFERENCE	0-4	0-1	0-2	0-1

#	Player	gp-gs	min	avg	Total		3-Point		F-Throw		Rebounds				pf	dq	a	to	blk	stl	pts	avg			
					fg-fga	fg%	3fg-fga	3fg%	ft-fa	ft%	off	def	tot	avg											
20	Elizabeth Arco	13-12	281	21.6	51-128	.398	0-0	.000	18-39	.462	17	59	76	5.8	50	5	18	39	14	13	120	9.2			
24	Danelle Buck	15-14	430	28.7	52-121	.430	4-12	.333	26-48	.542	26	51	77	5.1	33	1	14	53	5	20	134	8.9			
23	Andrea Wilkinson	15-12	420	28.0	44-102	.431	0-0	.000	8-15	.533	19	58	77	5.1	28	0	20	49	6	12	96	6.4			
02	Patsy Kealey	9-3	156	17.3	17-52	.327	0-6	.000	11-15	.733	11	21	32	3.6	27	0	17	23	0	5	45	5.0			
10	Olivia Hoesley	17-5	281	16.5	29-84	.345	13-46	.283	3-6	.500	8	16	24	1.4	10	0	6	23	0	9	74	4.4			
14	Kassidy Rinehart	17-14	447	26.3	29-102	.284	0-1	.000	16-45	.356	42	33	75	4.4	50	3	34	70	0	18	74	4.4			
42	Jeannine Schulz	10-8	259	25.9	15-52	.288	0-1	.000	12-20	.600	12	38	50	5.0	19	0	5	19	3	13	42	4.2			
03	Natalie Kramer	15-11	342	22.8	19-62	.306	4-15	.267	9-10	.900	2	23	25	1.7	31	1	17	39	1	10	51	3.4			
15	Fanita Robins	14-4	215	15.4	12-52	.231	0-4	.000	19-26	.731	8	30	38	2.7	22	0	10	58	3	11	43	3.1			
05	Nicole Cummins	9-0	90	10.0	7-24	.292	2-7	.286	7-18	.389	2	6	8	0.9	11	0	5	13	0	6	23	2.6			
12	Lauren Deveikis	17-2	238	14.0	16-60	.267	2-12	.167	4-8	.500	6	13	19	1.1	15	0	11	21	0	5	38	2.2			
22	Bethany Hoster	17-0	193	11.4	9-32	.281	0-0	.000	5-12	.417	18	27	45	2.6	24	0	17	20	4	6	23	1.4			
40	Katie Schumacher	6-0	43	7.2	3-11	.273	0-0	.000	2-5	.400	5	7	12	2.0	4	0	0	5	1	2	8	1.3			
32	Margaret Johnson	2-0	5	2.5	0-0	.000	0-0	.000	0-0	.000	0	1	1	0.5	1	0	0	0	0	0	0	0.0			
Team											33	37	70												9
Total.....		17	3400		303-882	.344	25-104	.240	140-267	.524	209	420	629	37.0	325	10	174	441	37	130	771	45.4			
Opponents.....		17	3400		422-1051	.402	124-393	.316	239-352	.679	249	435	684	40.2	288	-	261	283	55	264	1207	71.0			

<b>TEAM STATISTICS</b>	<b>LU</b>	<b>OPP</b>	<b>Date</b>	<b>Opponent</b>	<b>Score</b>	<b>Att.</b>
SCORING	771	1207	11/15/14	at Concordia University Chicago	L 57-95	225
Points per game	45.4	71.0	11/19/14	MARIAN UNIVERSITY	L 38-61	349
Scoring margin	-25.6	-	* 11/22/14	RIPON COLLEGE	L 40-41	522
FIELD GOALS-ATT	303-882	422-1051	* 12/03/14	BELOIT COLLEGE	L 31-51	428
Field goal pct	.344	.402	* 12/06/14	at Illinois College	L 41-70	250
3 POINT FG-ATT	25-104	124-393	* 12/09/14	at Lake Forest College	L 37-52	111
3-point FG pct	.240	.316	N 12/13/14	vs Whittier College	L 54-68	51
3-pt FG made per game	1.5	7.3	12/14/14	at UC Santa Cruz	L 35-57	68
FREE THROWS-ATT	140-267	239-352	* 1/3/15	at Grinnell College	L 48-63	391
Free throw pct	.524	.679	* 1/7/15	ST. NORBERT COLLEGE	L 34-88	367
F-Throws made per game	8.2	14.1	* 1/10/15	at Monmouth College	L 41-96	100
REBOUNDS	629	684	* 1/13/15	CARROLL UNIVERSITY	L 34-58	432
Rebounds per game	37.0	40.2	* 1/17/15	CORNELL COLLEGE	L 50-64	604
Rebounding margin	-3.2	-	* 1/21/15	at Ripon College	L 37-49	147
ASSISTS	174	261	* 1/24/15	at Knox College	L 71-123	375
Assists per game	10.2	15.4	* 1/27/15	LAKE FOREST COLLEGE	L 43-77	234
TURNOVERS	441	283	* 01/31/15	KNOX COLLEGE	L 80-94	422
Turnovers per game	25.9	16.6				
Turnover margin	-9.3	-				
Assist/turnover ratio	0.4	0.9				
STEALS	130	264				
Steals per game	7.6	15.5				
BLOCKS	37	55				
Blocks per game	2.2	3.2				
ATTENDANCE	3358	1718				
Home games-Avg/Game	8-420	8-208				
Neutral site-Avg/Game	-	1-51				

\* = Conference game

<b>Score by Periods</b>	<b>1st</b>	<b>2nd</b>	<b>Totals</b>
Lawrence University	371	400	771
Opponents	586	621	1207

**2014-15 Lawrence Basketball**  
**Lawrence University Points-Rebounds-Assists (as of Feb 04, 2015)**  
**All games**

Opponent	Date	Score	02		03		05		10		12		14		15	
			KEALEY,PAT	KRAMER,NAT	CUMMINS,NI	HOESLEY,OL	DEVEIKIS,L	RINEHART,K	ROBINS,FAN							
at Concordia University	11/15/14	57-95	L	DNP	2-1-1	0-0-0	0-0-0	2-3-1	15-4-1	9-7-0						
MARIAN UNIVERSITY	11/19/14	38-61	L	DNP	2-2-1	DNP	0-0-0	2-0-0	6-4-3	4-6-0						
RIPON COLLEGE	11/22/14	40-41	L	DNP	5-3-2	DNP	0-0-0	5-0-0	1-0-1	0-2-2						
BELOIT COLLEGE	12/03/14	31-51	L	DNP	0-1-0	DNP	0-0-0	2-0-1	5-6-3	4-3-1						
at Illinois College	12/06/14	41-70	L	DNP	4-2-0	2-2-0	5-0-0	4-2-0	4-4-2	5-2-1						
at Lake Forest College	12/09/14	37-52	L	DNP	5-5-2	2-0-0	5-2-1	0-3-1	6-2-1	0-2-0						
vs Whittier College	12/13/14	54-68	L	DNP	10-3-2	DNP	2-1-1	2-0-1	5-4-3	12-2-2						
at UC Santa Cruz	12/14/14	35-57	L	DNP	4-3-0	3-0-0	0-3-1	2-2-0	4-4-3	0-3-1						
at Grinnell College	1/3/15	48-63	L	5-0-3	3-1-2	DNP	2-2-1	0-0-0	4-5-3	4-2-0						
ST. NORBERT COLLEGE	1/7/15	34-88	L	6-5-3	0-0-0	DNP	5-0-0	1-1-0	6-5-0	1-1-0						
at Monmouth College	1/10/15	41-96	L	4-7-1	4-0-4	DNP	13-3-1	3-0-1	2-8-1	0-1-2						
CARROLL UNIVERSITY	1/13/15	34-58	L	3-5-3	3-0-0	0-0-0	9-1-0	0-0-0	4-3-2	2-4-1						
CORNELL COLLEGE	1/17/15	50-64	L	0-1-2	DNP	DNP	10-1-0	2-1-2	3-9-1	DNP						
at Ripon College	1/21/15	37-49	L	0-1-0	DNP	0-1-1	12-2-1	0-1-1	1-4-2	DNP						
at Knox College	1/24/15	71-123	L	10-6-4	2-2-2	4-2-1	7-2-0	5-0-2	6-3-0	2-1-0						
LAKE FOREST COLLEGE	1/27/15	43-77	L	0-0-0	2-0-0	11-3-2	2-5-0	4-1-0	2-3-2	0-2-0						
KNOX COLLEGE	01/31/15	80-94	L	17-7-1	5-2-1	1-0-1	2-2-0	4-5-1	0-7-6	DNP						

Opponent	Date	Score	20		22		23		24		32		40		42	
			ARCO,ELIZA	HOSTER,BET	WILKINSON,	BUCK,DANEL	JOHNSON,MA	SCHUMACHER	SCHULZ,JEAN							
at Concordia University	11/15/14	57-95	L	4-5-2	2-2-0	4-6-2	8-2-0	DNP	DNP	11-5-1						
MARIAN UNIVERSITY	11/19/14	38-61	L	9-6-0	1-2-0	4-2-2	2-3-1	DNP	DNP	8-3-0						
RIPON COLLEGE	11/22/14	40-41	L	8-10-1	1-0-1	9-6-2	11-7-0	DNP	DNP	0-3-1						
BELOIT COLLEGE	12/03/14	31-51	L	4-1-1	0-1-0	8-6-2	6-4-0	DNP	DNP	2-5-2						
at Illinois College	12/06/14	41-70	L	DNP	0-1-1	5-3-0	10-7-2	DNP	DNP	2-10-0						
at Lake Forest College	12/09/14	37-52	L	DNP	2-2-0	6-9-2	7-6-1	DNP	DNP	4-7-0						
vs Whittier College	12/13/14	54-68	L	DNP	0-7-0	DNP	17-10-1	DNP	DNP	6-8-1						
at UC Santa Cruz	12/14/14	35-57	L	DNP	3-5-4	DNP	10-3-1	DNP	DNP	9-3-0						
at Grinnell College	1/3/15	48-63	L	8-5-2	0-0-0	10-8-0	12-5-0	DNP	DNP	0-2-0						
ST. NORBERT COLLEGE	1/7/15	34-88	L	6-2-1	2-1-0	0-1-0	3-0-0	0-1-0	4-2-0	0-4-0						
at Monmouth College	1/10/15	41-96	L	7-7-0	2-6-1	6-2-0	DNP	0-0-0	0-1-0	DNP						
CARROLL UNIVERSITY	1/13/15	34-58	L	4-5-0	2-7-2	5-3-1	DNP	DNP	2-1-0	DNP						
CORNELL COLLEGE	1/17/15	50-64	L	19-6-3	0-0-1	6-3-2	10-5-0	DNP	DNP	DNP						
at Ripon College	1/21/15	37-49	L	14-10-1	0-0-0	4-8-2	6-8-3	DNP	DNP	DNP						
at Knox College	1/24/15	71-123	L	6-8-2	4-4-4	11-6-2	12-7-2	DNP	2-6-0	DNP						
LAKE FOREST COLLEGE	1/27/15	43-77	L	2-3-0	2-5-1	4-5-2	14-7-1	DNP	0-2-0	DNP						
KNOX COLLEGE	01/31/15	80-94	L	29-8-5	2-2-2	14-9-1	6-3-2	DNP	0-0-0	DNP						

## 2014-15 GAME RECAPS

### November 15

#### Concordia Chicago 95, Lawrence 57

RIVER FOREST, Ill. — The Concordia University Chicago women's basketball team got



off to a fast start and rolled to a 95-57 nonconference victory over Lawrence University at Geiseman Gymnasium.

Lauren Orr scored a game-high 20 points off the bench to pace the Cougars (1-0) and was one of four players in double figures. Miranda Rogers added 16 points for Concordia.

Kassidy Rinehart paced Lawrence (0-1) with 15 points and hit 6-of-7 shots from the floor. Jeannine Schulz added 11 points off the bench for the Vikings. Fanita Robins added nine points and a game-high seven rebounds for the Vikings.

The Cougars jumped out to a 16-4 lead in the first seven minutes and pulled away from there. Concordia pushed the lead to 44-16 at the half.

Lawrence played a much stronger second half by hitting 16-of-28 shots from the floor (57.1 percent) on the way to 41 points after the break.

Concordia shot 47.4 percent from the floor during the game and connected on 15-of-33 attempts from 3-point range.

### November 19

#### Marian 61, Lawrence 38

APPLETON, Wis.

-- The Marian University women's basketball team built a big first-half lead and



went on to a 61-38 nonconference victory over Lawrence University at Alexander Gymnasium.

Amelia Mirsberger led Marian (1-0) and all scorers with 18 points as she hit 6-of-8 shots from the floor and went 4-for-4 from the foul line. Sarah Olewinski added 12 points for the Sabres.

Elizabeth Arco paced the Vikings

(0-2) with nine points and six rebounds, and Jeannine Schulz added eight points.

Marian trailed early but went on an 18-2 run in the first half to pull out to a 20-7 lead with 9:14 left in the first half. Mirsberger scored nine points in the first half as the Sabres built a 32-16 advantage at the break.

The Vikings chipped away at the lead over the first nine minutes of the second half. Lawrence outscored the Sabres 13-8 to open the half, capped by Arco's layup, to trim the lead to 40-29. Arco scored four points in that run and Schulz had three.

Marian responded by going on a 16-4 run to grab a 56-33 lead and seal the victory.

### November 22

#### Ripon 41, Lawrence 40

APPLETON, Wis. -- The Lawrence University



women's basketball team scored just one point over the final 11 minutes and endured a

horrendous afternoon at the foul line in a 41-40 Midwest Conference loss to Ripon College at Alexander Gymnasium.

Ripon (1-2, 1-0 MWC) got two free throws from Meg Ryan with 30 seconds left to take the lead, and freshman guard Lauren Deveikis missed a jumper with five seconds left that would have won it for Lawrence (0-3, 0-1).

Both teams had a rough time at the foul line as Lawrence connected on only 9-of-22 from the stripe and Ripon hit just 9-of-21.

Freshman Danelle Buck led Lawrence with 11 points and she picked up seven rebounds. Freshman forward Elizabeth Arco pulled down 10 rebounds and added eight points for the Vikings. Andrea Wilkinson chipped in with nine points for the Vikings.

Ryan, McKenzie Banasik and Nicole Herkert scored 10 points apiece to pace Ripon, and Herkert had a

game-high 13 rebounds.

Lawrence led throughout most of the contest as the Vikings took their first lead at 7-5 on Arco's three-point play with 13:15 left in the first half. Lawrence would build that advantage to as much as nine points before the Red Hawks trimmed the lead to 28-22 at the half.

The Vikings grabbed their biggest lead of the game by going on a 6-0 run, capped by Natalie Kramer's layup and an Arco free throw with 11:07 left, for a 39-27 edge.

Ripon began chipping away at the advantage as the Vikings went ice cold from the floor and the foul line. Lawrence finished the game by going 0-for-11 from the floor and 1-for-5 from the line.

Lawrence's only points in that stretch came on Kassidy Rinehart's free throw with 4:51 remaining that gave the Vikings a 40-35 lead. Ripon got a layup from Chelsea Moldenhauer and a couple of free throws from Banasik to cut the lead to 40-39.

The Vikings then committed three consecutive turnovers before fouling Ryan. She hit both free throws to give Ripon the lead for good.

### December 3

#### Beloit 51, Lawrence 31

APPLETON, Wis.

-- The Lawrence University women's basketball team



endured a scoring drought that lasted nearly 12 minutes in a 51-31 Midwest Conference loss to Beloit College at Alexander Gymnasium.

Lana Wieseman led Beloit (3-3, 2-1 MWC) with 18 points and nine rebounds, and Laura Panicali added 13 points and nine boards.

Andrea Wilkinson came off the bench to score eight points for the Vikings (0-4, 0-2). The Vikings hit just 12-of-51 shots (23.5 percent) from the floor.

Lawrence had battled back in the

## 2014-15 GAME RECAPS

first half and tied the game at 16-16 on Kassidy Rinehart's jumper with 6:43 left in the first half. The Bucs would finish the first half on a 13-0 run, capped by Panicali's layup with 28 seconds left, to take a 29-16 lead at the half.

Lawrence finally broke the scoring drought on a layup by Danelle Buck, who finished with six points, with 14:45 left in the game. That started an 8-2 run for the Vikings, capped by back-to-back baskets from Buck, that trimmed Beloit's lead to 33-24 with 13:20 left.

The Bucs responded by scoring 16 of the game's next 20 points to grab a 49-28 lead with 6:07 left. Lawrence didn't get closer than 18 points the rest of the way.

### December 6

#### Illinois College 70, Lawrence 41

JACKSONVILLE, Ill. -- Reigning league Player of the Year Hannah McGinnis posted a double-double to lead the Illinois



College women's basketball team to a 70-41 league Midwest Conference victory over Lawrence University at Sherman Gymnasium.

McGinnis scored 19 points and grabbed 15 rebounds to go with four assists to lead the Lady Blues (4-2, 2-0 MWC).

Danelle Buck paced Lawrence (0-5, 0-3) with 10 points, and she grabbed seven rebounds. Jeannine Schulz picked up a team-high 10 rebounds for the Vikings.

Lawrence trailed by double digits twice in the first half before trimming Illinois College's lead to 29-21 at the half.

The Lady Blues led 35-25 early in the second half after Buck's jumper with 16:35 left. Illinois College then went on a 17-7 run over the next six minutes to expand the advantage to 52-32 with 10:48 remaining.

Lawrence never got closer than 17 points the rest of the way.

### December 9

#### Lake Forest 52, Lawrence 37

LAKE FOREST, Ill. — The Lake Forest College women's basketball team pulled away late and posted a 52-37 Midwest Conference victory over Lawrence University.



Brie Majkowski scored 14 points and K.C. Stralka added 10 to pace the Foresters (3-5, 3-3 MWC).

Danelle Buck scored seven points and grabbed six rebounds for Lawrence (0-6, 0-4). Andrea Wilkinson and Kassidy Rinehart added six points apiece for the Vikings, and Wilkinson had a game-high nine rebounds.

Lawrence, which led by as many as five points in the first half, trailed 25-22 at the break. The Vikings got a three-point play from Rinehart to tie the score at 25-25 before the Foresters pulled out to a 35-27 edge.

Nicole Cummins then scored on a layup and Buck made a free throw to cut the margin back to 35-30 with 12:45 remaining. Lawrence was then hit by a scoring drought that lasted 7:40 as Lake Forest scored the game's next eight points for a 43-30 advantage.

Buck hit a pair of free throws with 5:05 left to cut the lead to 43-32, but Lawrence would get no closer the rest of the way.

### December 13

#### Whittier 68, Lawrence 54

SANTA CRUZ, Calif. — The Whittier College women's basketball team pulled away midway through the second half and went on to a 68-54 nonconference victory over Lawrence University at the UC Santa Cruz Classic.



Priscilla Rodriguez scored 14 points and Ana Youngblood grabbed 12 rebounds to pace the Poets (3-3).

Freshman forward Danelle Buck picked up her first career double-double for Lawrence (0-7) with 17 points and 10 rebounds. Fanita Robins came off the bench to add 12 points for the Vikings.

It was a see-saw first half, and Lawrence pulled out to a 19-12 advantage. The Poets came back with a 17-3 run to take a 29-22 lead, but Lawrence answered back. The Vikings finished the first half on a 12-4 run, and Buck's jumper at the buzzer tied the game at 34-34 at the break.

The Poets scored the first seven points of the second half to grab a 41-34 edge with 16:09 remaining. After a Buck layup, Whittier got a layup from Erica Houston and back-to-back 3-pointers from Dannika Navales-Lugt to take a 49-36 lead with 11:12 left.

A layup from Kassidy Rinehart and a pair of free throws from Natalie Kramer cut Whittier's lead to 49-40 with 10:02 left. That's as close as the Vikings would get, and Whittier would go on to lead by as many as 16 points.

### December 14

#### UC Santa Cruz 57, Lawrence 35

SANTA CRUZ, Calif. — The UC Santa Cruz women's basketball team held Lawrence University to only 13 first-half points and went on to a 57-35 nonconference win at the Santa Cruz Classic.

Leah Parrish scored 13 points, and Sara Crane grabbed a game-high 10 rebounds to lead the Banana Slugs (8-3).

Freshman forward Danelle Buck paced Lawrence (0-8) with 10 points.

Lawrence was limited to only two points in the first 5:53 of the contest as Santa Cruz jumped out to an 11-2 advantage. Lawrence didn't hit double digits for the game until Jeannine





## 2014-15 GAME RECAPS

Schulz's jumper with 2:35 remaining in the first half.

Santa Cruz led by as many as 24 points in the first half and held a 35-13 advantage at the break.

Lawrence cut the margin to 37-20 on Buck's layup with 14:29 remaining, but that's as close as the Vikings would get.

### January 3

#### Grinnell 63, Lawrence 48

GRINNELL, Iowa — The Grinnell College women's basketball team turned back a second-half rally from Lawrence



University and went on to a 63-48 Midwest Conference victory at Darby Gymnasium.

Alissa Hirsh led Grinnell (4-6, 3-3 MWC) with 18 points, and Alex Neckopulos had a double-double for the Pioneers with 10 points and 15 rebounds.

Danelle Buck led Lawrence (0-9, 0-5) with 12 points, and Andrea Wilkinson added 10 points and a team-best eight rebounds.

Grinnell built a 15-point lead in the first half, but the Vikings chipped away by outscoring the Pioneers 16-10 over the final 9:31 of the first half.

The Pioneers led 35-26 at the break, but Lawrence scored the first seven points of the second half to trim the margin to 35-33. Elizabeth Arco had a three-point play, and Buck scored back-to-back baskets, the second with 15:52 left, to cut the lead to two.

Grinnell responded with a 10-0 run of its own to retake control of the game. Sophia Gatton's 3-pointer with 13:25 left gave the Pioneers a 45-33 advantage, but the Vikings fought back.

The Vikings countered by going on an 11-5 run, with the final six points coming on consecutive baskets from Wilkinson, to cut the lead to

50-44 with 9:24 left.

It was still a six-point game after Fanita Robins' layup for the Vikings cut the margin to 54-48 with 3:06 left. Grinnell then scored the game's final nine points to seal the victory.

### January 7

#### St. Norbert 88, Lawrence 34

APPLETON, Wis.

— The St. Norbert College women's basketball team pulled away early and rolled to an 88-34 Midwest Conference victory over Lawrence University at Alexander Gymnasium.



Regan Carmichael scored 16 points to lead five St. Norbert players in double figures. Heidi Van Sistine had a double-double for the Green Knights (10-2, 7-0 MWC) with 14 points and a game-high 10 rebounds.

Kassidy Rinehart, Elizabeth Arco and Patsy Kealey scored six points apiece to pace the Vikings (0-10, 0-6).

St. Norbert pulled out to a double-digit lead at 19-7 just 9:13 into the game. The Green Knights led by as many as 30 points in the first half and were up 40-10 at the half.

St. Norbert would lead by as many as 56 points in the second half on Megan McGoohan's 3-pointer with 47 seconds left in the game.

### January 10

#### Monmouth 96, Lawrence 41

MONMOUTH, Ill.

— The Monmouth College women's basket-



ball team jumped out to a big early lead and went on to a 96-41 Midwest Conference victory over Lawrence University at Glennie Gymnasium.

The Scots (4-8, 3-4 MWC) led by double digits at 17-6 just six minutes into the game and increased their advantage from there. Monmouth led 47-19 at the half.

Kelsey Walsberg scored 15 points to lead five Monmouth players in double figures.

Olivia Hoesley came off the bench to pace the Vikings (0-11, 0-7) with a career-high 13 points and her first double-digit scoring game. Hoesley hit a career-best three 3-pointers.

Kassidy Rinehart picked up a game-high eight rebounds for the Vikings, and Natalie Kramer picked up four assists.

### January 13

#### Carroll 58, Lawrence 34

APPLETON, Wis.

— The Carroll University women's basketball team steadily



pulled away in the second half and posted a 58-34 Midwest Conference victory over Lawrence University at Alexander Gymnasium.

Malory Christenson paced Carroll and all scorers with 15 points, and Julie Piech added 13 points for the Pioneers.

Olivia Hoesley, making her first career start for Lawrence, led the Vikings with nine points. Bethany Hoster grabbed a game-high seven rebounds for the Vikings.

Carroll (10-3, 7-1 MWC) led 28-18 at the half, and Lawrence (0-12, 0-8) never got closer than 11 points in the second half. A jumper from Andrea Wilkinson and an Elizabeth Arco layup cut Carroll's lead to 35-24 with 14:24 left in the contest.

Carroll then scored the game's next eight points to push the lead to 43-24 with 11:55 left. The Pioneers' biggest lead of the contest was the final margin.

Carroll won the game at the foul line by hitting 25-of-32 free throws. Lawrence, which turned the ball over 43 times, shot just 12 free throws in the contest. Carroll won despite hitting just 30.8 percent of its shots from the floor.

## 2014-15 GAME RECAPS

**January 17**

### **Cornell 64, Lawrence 50**

APPLETON, Wis. — It took two-time defending Midwest Conference champion Cornell College the entire second half to put away a pesky Lawrence University women's basketball team by the score of 64-50 in a league game at Alexander Gymnasium.



Cornell (8-7, 6-4 MWC) led by just four at the half, and the Vikings (0-13, 0-9) were within striking distance until the final two minutes of the game.

Rikki Mulloy scored 17 points to pace the Rams, and Taylor Dicus added 14 points and eight rebounds.

Freshman Elizabeth Arco scored a game-high 19 points, grabbed six rebounds and picked up two blocks and two steals to pace Lawrence. Fellow rookies Olivia Hoesley and Danelle Buck added 10 points apiece for the Vikings, and Kassidy Rinehart pulled down a game-high nine rebounds.

Lawrence trailed by as many as eight points in the first half before scoring three consecutive baskets to cut the advantage to 17-15. Cornell pushed the lead back to seven, but the Vikings scored seven straight, including five from Buck, to tie the game at 24-24.

Cornell led 30-26 at the half, and the Rams extended the lead to 11 early in the second half. Lawrence trimmed the lead back to six points before the Rams stretched it back to 13 at 56-43. Lawrence kept chipping away and was still as close as nine points with less than two minutes left but couldn't get any closer.

**January 21**

### **Ripon 47, Lawrence 39**

RIPON, Wis. — The Ripon College women's basketball team held off Lawrence University and posted a 47-39 Midwest Conference



victory at the Storzer Center.

Emma McDonald and Chelsea Moldenhauer had 11 points apiece to pace Ripon (2-14, 2-9 MWC), and McDonald grabbed a team-best nine rebounds.

Elizabeth Arco scored a game-high 14 points on 7-of-9 shooting and posted her first career double-double with a game-high 10 rebounds for the Vikings (0-14, 0-10). Olivia Hoesley added 12 points for Lawrence and went 4-for-7 from beyond the arc.

Lawrence led by as many as seven points in the first half, but Ripon rallied to take a 17-16 lead at the half.

Ripon stretched the lead to 35-25 with 10:36 left, but Hoesley drained a 3-pointer and Danelle Buck made a pair of free throws to trim the lead back to 35-30.

The Red Hawks responded by scoring the game's next six points to grab a 41-30 lead with 7:47 left. Lawrence cut the lead to six points twice after that but could get no closer.

**January 24**

### **Knox 123, Lawrence 71**

G A L E S - BURG, Ill. — The Knox College women's basketball team



hit a school-record 18 3-pointers en route to a 123-71 Midwest Conference victory over Lawrence University at Memorial Gymnasium.

The 123 points also set a school record for the Prairie Fire (7-9, 5-6 MWC).

Jessica Howard hit seven 3-pointers on her way to a game-high 28 points for Knox. Jodi Marver added 19 points for Knox and was one of four players scoring in double figures.

Knox hit 18-of-48 from beyond the arc and also went 25-for-34 from the foul line.

Danelle Buck led Lawrence (0-15, 0-11) with 12 points, and she pulled down seven rebounds. Andrea Wilkinson added 11 points and six rebounds,

and Patsy Kealey had 10 points and six boards.

Lawrence led 13-12 after Elizabeth Arco's jumper with 13 minutes left in the first half, but Knox went on a 14-3 run to grab a 26-16 advantage.

Lawrence trimmed the lead back to six and trailed by nine points when Knox finished the final 5:21 of the first half on a 22-8 run. The Prairie Fire led 57-34 at the break.

Knox steadily increased its lead and its biggest advantage was the 52-point final margin.

**January 27**

### **Lake Forest 77, Lawrence 43**

APPLETON, Wis. — The Lake Forest College women's basketball team scored



the game's first 16 points and never looked back en route to a 77-43 Midwest Conference win over Lawrence University at Alexander Gymnasium.

Michelle Ricolcol scored 20 points to pace Lake Forest (8-9, 8-5 MWC), and Danielle Canulli added 16 points for the Foresters. Fifteen of Lake Forest's 16 players scored in the game.

Danelle Buck led Lawrence (0-16, 0-12) with 14 points and a game-high seven rebounds. Nicole Cummins came off the bench to score a career-high 11 points for the Vikings.

Lake Forest hit five of its first six shots from the floor to help build a 16-0 edge. The Vikings trimmed the margin to 18-7, but Lake Forest stretched the lead all the way to 37-15 at the half. Lake Forest would go on to lead by as many as 38 points in the second half.

The Foresters shot 49.1 percent for the game and lived at the foul line. Lake Forest went 20-for-32 at the charity stripe during the game. Lawrence shot just six free throws in the game.

## 2014-15 GAME RECAPS

**January 31**

**Knox 94, Lawrence 80**

APPLETON,  
Wis. — The Knox  
College wom-  
en's basketball  
team pulled



away in the final five minutes and posted a 94-80 Midwest Conference win over Lawrence University at Alexander Gymnasium.

Jodi Marver paced Knox (9-9, 7-6 MWC) with 20 points as she hit 14-of-18 free throws.

Elizabeth Arco led Lawrence (0-17, 0-13) with a game-high 29 points, and she picked up eight rebounds, five assists, four steals and two blocks. Patsy Kealey added 17 points and seven rebounds for the Vikings, and Andrea Wilkinson had 14 points and a game-high nine rebounds.

Knox won the game at the foul line as the Prairie Fire hit 32-of-50 foul shots. Lawrence, which went 18-for-29 from the line, was whistled for 32 fouls. Knox, which played a full-court press for the entire game, was called for 25 fouls.

Lawrence scored the first six points of the game and built its biggest lead at 19-11 on Arco's layup with 12:38 left in the first half. Knox then went on a 14-0 run to grab a 25-19 advantage with 11:06 left before the break.

Lawrence came back to take the lead at 36-35 on Danelle Buck's free throw with 3:47 left in the opening half. Knox rallied to grab a 45-41 lead at the break.

Knox pushed its lead to 71-59 on a pair of Carley Bechen free throws with 9:47 left in the game, but the Vikings rallied. Arco, Buck and Kealey all picked up baskets for the Vikings as Lawrence trimmed the margin to 74-69 with 6:01 left.

Lawrence was down 81-74 when the Prairie Fire hit four consecutive baskets, including a 3-pointer, to take control for good with a 90-76 lead with 2:11 left.