



Lawrence University (0-9, 0-4 MWC)

vs.

Grinnell College (5-5, 2-3 MWC)

Saturday, Jan. 2, 3 p.m.

Alexander Gymnasium, Appleton, Wis.



2015-16 LAWRENCE SCHEDULE

Date	Opponent	Time/Res.
11/17	at Marian	L, 57-28
11/21	at Ripon	L, 74-57
11/25	Lake Forest	L, 60-36
12/2	at Beloit	L, 93-73
12/5	Illinois College	L, 56-41
12/15	Concordia Chicago	L, 68-57
12/18-19 Post Exam Jam Tournament		
12/18	at Hope	L, 91-43
12/19	vs. Alma	L, 76-30
12/30	St. Mary's (Minn.)	L, 73-49
1/2	Grinnell	3:00 pm
1/6	at St. Norbert	7:30 pm
1/9	Monmouth	3:00 pm
1/12	at Carroll	7:00 pm
1/16	at Cornell	3:00 pm
1/20	Ripon	7:30 pm
1/23	Knox	4:00 pm
1/26	at Lake Forest	7:00 pm
1/30	at Knox	3:00 pm
2/3	St. Norbert	7:30 pm
2/6	at Illinois College	3:00 pm
2/9	Beloit	7:30 pm
2/17	Carroll	7:00 pm
2/20	at Monmouth	3:00 pm
2/26-27	MWC Tournament	TBA

Home games in bold

PROBABLE STARTERS

Lawrence



Forward	Andrea Wilkinson	Sr.	6-0
Forward	Patsy Kealey	Sr.	5-10
Guard	Aubrey Scott	Jr.	5-9
Guard	Natalie Kramer	So.	5-7
Guard	Olivia Hoesley	So.	5-8

Grinnell



Forward	Alex Neckopulos	Jr.	5-9
Forward	Kayla Morrissey	So.	5-10
Guard	Sophia Gatton	Jr.	5-6
Guard	Alissa Hirsh	Sr.	5-5
Guard	Anne Boldt	Sr.	5-8

SCHEDULE

►The Vikings return to Midwest Conference play on Saturday when Lawrence hosts Grinnell at 3 p.m. at Alexander Gymnasium.

VIDEO WEBCAST

►The game features a free video webcast available at: <http://portal.stretchinternet.com/lawrence/>. Dick Knapinski and Anthony Totoraitis are on the call for Lawrence home games. A link for the webcast is available on the Lawrence women's basketball page.

THE COACHES

►Ashley Wellman (Alma 2008) is in her third season at Lawrence and has a record of 4-51 (.073).

►Dana Harrold (Dubuque 2004) is in her third season at Grinnell and has a record of 18-38 (.321).



Ashley Wellman

THE SERIES

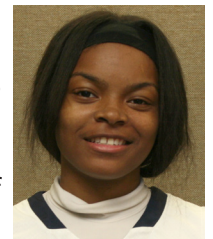
►The series with Grinnell, which started in the 1989-90 season, is tied 17-17. Grinnell has won the last 13 games in the series. Lawrence put together an 11-game win streak in the series from the 1992-93 season through the 2001-02 campaign. The Vikings haven't defeated Grinnell since a 76-38 victory in the 2006-07 season.

LAST GAME

A big third quarter led St. Mary's (Minn.) to a 73-49 non-conference victory over Lawrence on Wednesday at Alexander Gymnasium.

Haley Trom came off the bench to lead the Cardinals with 15 points, and Micaela Meredith posted a double-double of 13 points and 11 rebounds.

Lawrence's Fanita Robins came off the bench to record her second double-figure scoring game of the season with 10 points. Nicole



Fanita Robins

Cummins added nine points for the Vikings as she went 3-for-3 from 3-point range. Liz Arco picked up six points, seven rebounds, three blocks and two steals for Lawrence.

St. Mary's led 31-20 at the half, and the Cardinals were up 12 when they went on a run midway through the third period. St. Mary's got back-to-back 3-pointers from Alexa Huisman as part of an 11-0 run to take a 46-22 lead.

The Cardinals later connected on four of five shots in one stretch to push their lead to 58-30. St. Mary's, which outscored Lawrence 27-12 in the third period, would lead 58-32 after three.

Lawrence never got closer than 20 points in the fourth quarter.

The Cardinals got off to a fast start and led 19-6 after the first quarter, but Lawrence battled back in the second. The Vikings went on a 12-3 run to start the quarter as Cummins hit back-to-back 3-pointers, and Arco, Aubrey Scott and Sammi Jo Nixon all picked up baskets during that stretch.

Lawrence trimmed the lead to 22-18 after a Cummins 3-pointer, but the Cardinals responded with seven consecutive points and would lead 31-20 at the half.

VIKINGS UPDATE

▶The Vikings just finished running a brutal gauntlet of non-conference games over the past two weeks. The Vikings dropped three games, including one to fourth-ranked Hope, to squads with a combined record of 24-7.



▶Senior forward Patsy Kealey (New Rochelle, N.Y./Ursuline) had the best shooting night of her career against Concordia Chicago back on Dec. 15. Kealey hit 10-of-12 shots from



Patsy Kealey



MWC Standings

	MWC		Overall	
	W	L	W	L
St. Norbert	6	0	7	3
Carroll	3	1	4	5
Ripon	3	2	6	4
Cornell	3	2	5	4
Illinois College	3	2	5	4
Beloit	3	3	5	6
Lake Forest	2	2	3	5
Grinnell	2	3	5	5
Knox	1	2	6	2
Lawrence	0	4	0	9
Monmouth	0	5	1	9

Games Saturday

Grinnell at Lawrence
 Ripon at Knox
 Illinois Tech at Cornell
 Carroll at Illinois College
 Monmouth at Lake Forest
 UW-Stevens Point at St. Norbert

Games Wednesday

Lawrence at St. Norbert
 Illinois College at Monmouth
 Lake Forest at Beloit
 Knox at Cornell
 Ripon at Carroll

the floor on her way to 22 points. She fell just one point shy of matching her career high. Kealey also grabbed 11 rebounds in the contest, which matched her career high set vs. Knox on Dec. 14, 2013.

▶Sophomore forward Liz Arco (Bartlett, Ill./Bartlett) was one of the bright spots in a rough loss at fourth-ranked Hope. Arco scored six points and matched her career



Elizabeth Arco

high with 10 rebounds. She also recorded a career-high six blocks to go along with a pair of assists and a pair of steals. Arco leads the team in scoring at 8.6 points per game and is second in rebounding at 5.9 per contest.

▶Sophomore guard Nicole Cummins (San Antonio, Texas/John Marshall) enjoyed a good return to the team after being away from the squad due to a death in the family. Cummins, who hadn't played since Dec. 5 vs. Illinois College, went 3-for-3 from 3-point range against St. Mary's on her way to a season-high nine points.



Nicole Cummins

▶Freshman guard Sammi Jo Nixon (Wadsworth, Ill./Warren Township) also enjoyed a perfect shooting night against St. Mary's. Nixon went 3-for-3 from the floor, including 1-for-1 from beyond the arc, on her way to a season-best seven points.



Sammi Jo Nixon

▶The Vikings are 11th in the Midwest Conference in scoring at 46.0 points per game. Lawrence is ninth in scoring defense at 72.0 points per contest.

▶Lawrence is shooting 31.9 percent from the floor, which ranks 11th in the conference. The Vikings are seventh in field goal percentage defense at 41.5 percent.

▶The Vikings are eighth in the league in 3-point shooting at 25.8 percent. Lawrence ranks eighth in defending the 3-pointer at 31.4 percent.

▶Lawrence ranks 11th in the conference in free-throw shooting at 54.9 percent, but the Vikings are trending upward. Lawrence has hit 70.8 per-

cent (17-for-24) of its free throws in the last two games.

SCOUTING GRINNELL

▶Grinnell is coming off a split of its games at the Jon Davison Classic at the University of Dubuque. The Pioneers topped Augustana (Ill.) 85-80 on Tuesday before dropping a 74-69 decision to Dubuque on Wednesday.



▶Three Pioneers are averaging in double figures in points, and one player is averaging a double-double. Alex Neckopulos is third on the team in scoring at 10.8 points per game but is pulling down a Midwest Conference-best 11.6 rebounds per game. Alissa Hirsh is tops on the team in scoring at 12.9 points per contest, and Kayla Morrissey is second at 12.3.

▶Hirsh also leads the team at 5.0 assists per game and 1.5 steals per contest.

▶Grinnell ranks sixth in the Midwest Conference in scoring at 64.1 points per game. The Pioneers are fifth in scoring defense at 65.1 points per contest.

▶Grinnell is shooting 38.7 percent from the floor, and that ranks fifth in the conference. The Pioneers are sixth in field goal percentage defense at 39.7 percent.

▶The Pioneers are tops in the league in defending the 3-pointer at 23.8 percent. Grinnell ranks seventh in the conference in 3-point shooting at 27.9 percent.

▶Grinnell is shooting 61.3 percent from the foul line, and that ranks seventh in the conference.

Lawrence University Basketball Facts

Location	Appleton, Wis.
Founded	1847
Enrollment	1,500
President	Mark Burstein
Affiliation	NCAA Division III
Conference	Midwest Conference
Nickname	Vikings
School Colors	Blue and White
Home Arena	Alexander Gymnasium (1929, capacity 1,100)
Director of Athletics	Mike Szkodzinski
First season of basketball	1975-76
Seasons of basketball	39
All-time record	355-493 (.419)
Midwest Conference titles	2
1989-90, 1998-99	
Lake Michigan Conference titles	1
1988-89	
NCAA tournament appearances	1
1999	

CAREER SCORING LEADERS

- 1,487 – Claire Getzoff, 2002-06
- 1,225 – Sarah O'Neil, 1988-92
- 1,186 – Felice Porrata, 2001-05
- 1,105 – Jackie Huss, 1993-97
- 975 – Katherine Lofgren, 1989-93
- 965 – Krista Tomter, 1989-93
- 956 – Kelly Mulcahy, 2004-08
- 942 – Gina Seegers, 1988-92
- 909 – Alex Deshler, 2010-14
- 895 – Molly Lieberman, 1993-97
- 868 – Carrie Van Groll, 2004-08
- 866 – Dara Rakun, 1998-2002
- 833 – Robin Chapman, 1979-83
- 830 – Vicki Corbeil, 1976-79
- 828 – Tracie Spangenberg, 1986-90
- 808 – Joy Rogatzki, 1996-2000
- 799 – Laura Aerts, 2006-10
- 751 – Alisa Haase, 1992-96
- 745 – Beth Pollnow, 1998-2002
- 723 – Deb Jaryszak, 1978-82
- 639 – Holly Skaer, 1988-91
- 622 – Mindy Rueden, 1996-2000
- 613 – Cathy Kaye, 2009-13
- 598 – Amber Lisowe, 2011-14
- 582 – Jenny Stoner, 2004-08

2015-16 Lawrence University Basketball
Lawrence University Combined Team Statistics (as of Dec 31, 2015)
All games

RECORD:	OVERALL	HOME	AWAY	NEUTRAL
ALL GAMES	0-9	0-4	0-4	0-1
CONFERENCE	0-4	0-2	0-2	0-0
NON-CONFERENCE	0-5	0-2	0-2	0-1

#	Player	gp-gs	min	avg	Total		3-Point		F-Throw		Rebounds				pf	dq	a	to	blk	stl	pts	avg
					fg-fga	fg%	3fg-fga	3fg%	ft-fga	ft%	off	def	tot	avg								
20	Elizabeth Arco	8-5	202	25.3	29-68	.426	0-0	.000	11-28	.393	11	36	47	5.9	30	3	14	33	15	9	69	8.6
23	Andrea Wilkinson	9-9	284	31.6	32-86	.372	0-4	.000	8-13	.615	14	46	60	6.7	24	0	12	31	8	10	72	8.0
02	Patsy Kealey	9-5	158	17.6	21-51	.412	3-7	.429	5-13	.385	15	28	43	4.8	24	1	10	22	0	10	50	5.6
10	Olivia Hoesley	9-9	191	21.2	15-60	.250	10-40	.250	1-2	.500	2	11	13	1.4	15	0	10	14	1	6	41	4.6
15	Fanita Robins	9-0	152	16.9	7-43	.163	3-10	.300	22-34	.647	9	15	24	2.7	24	0	9	27	1	5	39	4.3
03	Natalie Kramer	9-9	240	26.7	11-40	.275	5-20	.250	5-12	.417	2	15	17	1.9	18	1	13	26	0	7	32	3.6
24	Aubrey Scott	9-8	212	23.6	10-37	.270	4-19	.211	8-10	.800	12	22	34	3.8	8	0	7	24	0	5	32	3.6
14	Sammi Jo Nixon	8-0	113	14.1	7-29	.241	3-17	.176	7-10	.700	0	10	10	1.3	4	0	8	10	1	2	24	3.0
12	Lauren Deveikis	9-0	103	11.4	8-29	.276	2-7	.286	8-12	.667	6	3	9	1.0	5	0	3	3	0	3	26	2.9
05	Nicole Cummins	6-0	53	8.8	5-13	.385	4-8	.500	0-0	.000	0	1	1	0.2	2	0	5	9	0	1	14	2.3
44	Leah Reeves	9-0	92	10.2	6-17	.353	0-0	.000	3-8	.375	12	16	28	3.1	5	0	4	6	1	2	15	1.7
Team											9	17	26				5					
Total.....		9	1800		151-473	.319	34-132	.258	78-142	.549	92	220	312	34.7	159	5	95	210	27	60	414	46.0
Opponents.....		9	1800		245-591	.415	60-191	.314	98-172	.570	149	258	407	45.2	149	-	145	140	28	127	648	72.0

TEAM STATISTICS

	LU	OPP
SCORING	414	648
Points per game	46.0	72.0
Scoring margin	-26.0	-
FIELD GOALS-ATT	151-473	245-591
Field goal pct	.319	.415
3 POINT FG-ATT	34-132	60-191
3-point FG pct	.258	.314
3-pt FG made per game	3.8	6.7
FREE THROWS-ATT	78-142	98-172
Free throw pct	.549	.570
F-Throws made per game	8.7	10.9
REBOUNDS	312	407
Rebounds per game	34.7	45.2
Rebounding margin	-10.6	-
ASSISTS	95	145
Assists per game	10.6	16.1
TURNOVERS	210	140
Turnovers per game	23.3	15.6
Turnover margin	-7.8	-
Assist/turnover ratio	0.5	1.0
STEALS	60	127
Steals per game	6.7	14.1
BLOCKS	27	28
Blocks per game	3.0	3.1
ATTENDANCE	761	1489
Home games-Avg/Game	4-190	4-336
Neutral site-Avg/Game	-	1-146

<u>Date</u>	<u>Opponent</u>		<u>Score</u>	<u>Att.</u>
11/17/15	at Marian University	L	28-57	254
* 11/21/15	at Ripon College	L	57-74	238
* 11/25/15	LAKE FOREST COLLEGE	L	36-60	299
* 12/02/15	at Beloit College	L	73-93	150
* 12/05/15	ILLINOIS COLLEGE	L	41-56	259
12/15/15	CONCORDIA CHICAGO	L	57-68	101
12/18/15	at Hope College	L	43-91	701
12/19/15	vs Alma College	L	30-76	146
12/30/15	ST. MARY'S UNIVERSIT	L	49-73	102

* - Conference game

Score by Periods	1st	2nd	3rd	4th	Totals
Lawrence University	80	95	116	123	414
Opponents	178	149	162	159	648

2015-16 Lawrence University Basketball
Lawrence University Points-Rebounds-Assists (as of Dec 31, 2015)
All games

Opponent	Date	Score		02	03	05	10	12	14	15
				KEALEY,PAT	KRAMER,NAT	CUMMINS,NI	HOESLEY,OL	DEVEIKIS,L	NIXON,SAMM	ROBINS,FAN
at Marian University	11/17/15	28-57	L	4-5-0	0-1-2	3-0-0	3-2-0	0-1-1	1-0-2	3-1-1
at Ripon College	11/21/15	57-74	L	0-1-0	6-1-4	0-0-0	11-0-2	5-0-0	0-0-0	11-3-2
LAKE FOREST COLLEGE	11/25/15	36-60	L	3-6-0	1-4-1	0-0-2	0-1-1	2-1-0	4-3-0	3-4-0
at Beloit College	12/02/15	73-93	L	4-2-1	4-2-2	0-0-0	9-2-2	7-3-0	4-1-1	4-2-0
ILLINOIS COLLEGE	12/05/15	41-56	L	5-6-2	5-3-2	2-0-0	5-2-0	0-0-0	DNP	6-6-2
CONCORDIA CHICAGO	12/15/15	57-68	L	22-11-3	2-0-0	DNP	2-1-1	2-1-1	5-5-1	2-5-2
at Hope College	12/18/15	43-91	L	5-3-1	3-2-0	DNP	10-0-1	6-0-1	3-0-3	0-1-2
vs Alma College	12/19/15	30-76	L	7-5-2	10-3-0	DNP	1-3-1	0-3-0	0-0-0	0-1-0
ST. MARY'S UNIVERSIT	12/30/15	49-73	L	0-4-1	1-1-2	9-1-3	0-2-2	4-0-0	7-1-1	10-1-0

Opponent	Date	Score		20	23	24	44
				ARCO,ELIZA	WILKINSON,	SCOTT,AUBR	REEVES,LEA
at Marian University	11/17/15	28-57	L	0-3-0	8-11-0	2-6-0	4-7-0
at Ripon College	11/21/15	57-74	L	18-8-5	6-2-1	0-1-2	0-1-0
LAKE FOREST COLLEGE	11/25/15	36-60	L	12-3-1	8-4-1	0-2-3	3-3-1
at Beloit College	12/02/15	73-93	L	15-4-4	14-6-1	12-3-1	0-3-0
ILLINOIS COLLEGE	12/05/15	41-56	L	12-9-0	4-10-2	2-5-0	0-0-0
CONCORDIA CHICAGO	12/15/15	57-68	L	DNP	14-15-5	8-7-0	0-7-0
at Hope College	12/18/15	43-91	L	6-10-2	6-2-1	0-4-0	4-1-1
vs Alma College	12/19/15	30-76	L	0-3-1	8-8-0	0-5-1	4-5-1
ST. MARY'S UNIVERSIT	12/30/15	49-73	L	6-7-1	4-2-1	8-1-0	0-1-1

2015-16 Game Recaps

November 17

Marian 57, Lawrence 28

FOND DU LAC, Wis. — The Lawrence University women's basketball team struggled out of the gate and Marian University posted a 57-28 non-conference victory in the season opener at Sadoff Gymnasium.

Marian bolted to a 25-7 lead after the first quarter, and the Sabres led 36-10 at the half.

Nicole Paulus led Marian and all scorers with 19 points, and Brittany Bauman added 11.

Andrea Wilkinson led Lawrence with eight points and pulled down a game-high 12 rebounds to go along with three steals. The Vikings hit on only 10-of-48 shots from the floor (20.8 percent), and Lawrence shot just 2-of-13 (15.4 percent) from beyond the arc.

Marian opened the second half by scoring 11 consecutive points to push the lead to 47-10 and never led by less than 27 points the rest of the way.

November 21

Ripon 74, Lawrence 57

RIPON, Wis. — The Ripon College women's basketball team pulled away in the second quarter and kept Lawrence University at bay the rest of the game in a 74-57 Midwest Conference victory at the Storzer Center.

Freshman Maggie Oimoen scored 22 points on 11-of-14 shooting to pace Ripon (2-0, 1-0 MWC).

Liz Arco came off the bench to pace Lawrence (0-2, 0-1) with 18 points, eight rebounds and five assists. Fanita Robins and Olivia Hoesley added 11 points apiece for Lawrence.

Ripon led 15-14 late in the first quarter, but the Red Hawks scored eight consecutive points. The game then see-sawed as Lawrence trimmed the lead back seven before Ripon stretched it all the way to 33-16.



Hoesley then hit a 3-pointer, Robins connected on back-to-back jumpers and Arco hit a jumper to cut the lead to 37-25 at the half.

Lawrence was unable to put a dent in Ripon's lead in the final two quarters. The Vikings never got closer than 10 points, but Ripon didn't pull away.

Lawrence cut the lead to 62-51 on Natalie Kramer's 3-pointer with 5:47 left in the fourth quarter before Ripon finally put the game away in the final minutes.

November 25

Lake Forest 60, Lawrence 36

APPLETON, Wis. — The Lake Forest College women's basketball team jumped out to a 12-0 lead and went on to a 60-36 Midwest Conference win over Lawrence University at Alexander Gymnasium.

K.C. Stralka posted a double-double with 10 points and 10 rebounds for the Foresters (1-1, 1-0 MWC). Brie Majkowski, Michelle Ricolcol and Brittany Avonts had eight points apiece for Lake Forest.

Liz Arco scored a game-high 12 points to pace Lawrence (0-3, 0-2), and Andrea Wilkinson added eight points.

The Foresters kept Lawrence off the board until Sammi Jo Nixon's 3-pointer with 3:41 left in the opening quarter trimmed the margin to 12-3. Lake Forest would go on to lead 15-7 after the opening 10 minutes.

The Vikings got a layup from Arco and a 3-pointer from Patsy Kealey to cut the lead to 15-12 with 8:40 left in the second quarter. Lake Forest finished the first half on a 10-2 run and pushed the lead to 25-14 at the half.

The Foresters pushed the lead to 20 points late in the third quarter and would go on to lead by as many as 26 points in the final period.



December 2

Beloit 93, Lawrence 73

BELOIT, Wis. — Lana Wieseman and Nora Polaski combined to score 57 points to lead the Beloit College women's basketball team to a 93-73 Midwest Conference win over Lawrence University at Flood Arena.

Wieseman scored 35 points and grabbed 12 rebounds and Polaski added 22 points to lead Beloit (3-3, 2-1 MWC). Wieseman hit 12-of-19 shots from the floor, and Polaski was a perfect 10-for-10.

Liz Arco paced Lawrence (0-4, 0-3) with 15 points and a team-high four assists. Andrea Wilkinson added 14 points and a team-best six rebounds for the Vikings. Aubrey Scott chipped in with a career-high 12 points as she hit 5-of-7 shots from the floor, including 2-of-2 from 3-point range.

Lawrence led 15-10 in the first quarter, but Beloit outscored the Vikings 14-6 over the final four minutes to grab a 24-21 lead after one quarter.

A 9-0 run by the Bucs helped them take control in the second quarter and push the lead to 44-32. Beloit led 48-38 at the half.

The Vikings never got closer than 10 points in the third quarter, but the Bucs couldn't put Lawrence away. Scott's jumper cut Beloit's advantage to 68-55 after three quarters.

Lawrence trimmed the margin back to 10 points twice, the first on Scott's 3-pointer and the second on Wilkinson's jumper to make it 70-60. Beloit responded with a 15-0 run to push the lead to 85-60 and seal the victory.

December 5

Illinois College 56, Lawrence 41

APPLETON, Wis. — The Illinois College women's basketball team pulled away from Lawrence University in



2015-16 Game Recaps

the final quarter and posted a 56-41 Midwest Conference victory at Alexander Gymnasium.

Brielle Greenleaf led Illinois College (4-2, 2-0 MWC) with 11 points, and Melissa Solorio and Jill Friedrich added 10 points apiece. Solorio completed a double-double with 10 rebounds.

Liz Arco paced Lawrence (0-5, 0-4) with 12 points, and she picked up nine rebounds. Andrea Wilkinson led the Vikings with 10 rebounds.

Illinois College took control of the game late in the second quarter and early in the third. The Lady Blues held Lawrence scoreless for a stretch of 9:32 that finally ended when Olivia Hoesley hit a 3-pointer with 5:43 left in the third quarter to cut the lead to 32-23.

Illinois College would push its lead back to as many as 14 in the third quarter, but a pair of free throws from Fanita Robins and a jumper from Patsy Kealey trimmed the margin back to 40-30 heading to the fourth.

The Lady Blues scored the first three points of the fourth quarter, but Robins answered with a 3-pointer to cut the lead back to 43-33 with 8:58 left in the game.

Illinois College then scored six of the game's next seven points to build a 49-34 advantage. Lawrence never got closer than 13 points after that.

The Vikings fell behind 9-2 to start the game, but Lawrence battled back to cut the margin to 12-11 after the first quarter.

Lawrence took its first lead at 13-12 on Arco's jumper to start the second quarter. The Vikings later went on a 7-0 run, capped by Kealey's jumper with 5:15 left in the opening half, to grab a 20-18 edge. Illinois College then held Lawrence scoreless for the rest of the first half and led 28-20 at the break.

December 15

Concordia Chicago 68, Lawrence 57

APPLETON, Wis.

— The Concordia University Chicago women's basketball team scored six consecutive points in a stretch of 38 seconds in the final minutes and went on to pull out a 68-57 non-conference win over Lawrence University at Alexander Gymnasium.

Lauren Orr paced Concordia (3-3) with 18 points, and Courtney Lofink added 12 points and five assists for the Cougars.

Patsy Kealey and Andrea Wilkinson both posted double-doubles for the Vikings (0-6), who were playing without top scorer Liz Arco.

Kealey finished with a game-high 22 points on 10-for-12 shooting from the floor to go with 11 rebounds. Wilkinson had 14 points and a game-high 15 rebounds to go with five assists, three blocks and two steals. Aubrey Scott added eight points and seven rebounds for the Vikings.

Lawrence battled back from a six-point halftime deficit in the third quarter to lead by five points in the period. The Vikings opened the period with an 8-1 run, capped by back-to-back layups from freshman Sammi Jo Nixon, to take a 28-27 lead with 6:42 left in the quarter.

The Vikings were up one when a layup from Kealey and free throws from Wilkinson and Kealey gave Lawrence a 43-38 edge with 31 seconds left. Orr hit a jumper to cut the lead to 43-40 after three quarters.

The teams traded the lead in the fourth quarter, but the Vikings were up 52-51 after Kealey's jumper with 4:36 remaining. Taylor Jacobsen hit a 3-pointer for the Cougars, and Sheyla Kahalehoe followed with a layup to give Concordia a 56-52 edge.

Kealey hit another jumper to trim the margin to 56-54, but the Cougars then put on the decisive spurt. Orr hit a 3-pointer and Erin Jacobsen scored



the next three points to stretch the margin to 62-54 with 1:53 left. The Cougars then hit five of their next six free throws to seal the victory.

Turnovers and missed free throws really hurt the Vikings. Against the Cougars' pressing defense, Lawrence turned the ball over a season-high 35 times. Concordia was whistled for 26 fouls, but the Vikings were unable to take advantage of that. Lawrence went just 16-of-35 from the foul line.

December 18

No. 4 Hope 91, Lawrence 43

HOLLAND, Mich.

— The fourth-ranked Hope College women's basketball team jumped out to a huge early lead and cruised to a 91-43 non-conference win over Lawrence University at the Post Exam Jam Tournament.

The Flying Dutch (7-0) rolled to a 31-4 lead after the first quarter and had expanded that advantage to 51-15 at the half. Hope would go on to lead by as many as 56 points in the final quarter.

Maura McAfee led six Hope players in double figures with 16 points. Francesca Buchanan posted a double-double for the Dutch with 12 points and 11 rebounds.

Olivia Hoesley led Lawrence (0-7) with 10 points. Liz Arco added six points, pulled down a team-high 10 rebounds and piled up six blocks.

December 19

Alma 76, Lawrence 30

HOLLAND, Mich.

— The Lawrence University women's basketball team shot just 20 percent from the floor and fell 76-30 to Alma College in a non-conference game at the Post Exam Jam.

The Vikings hit just 11-of-53 shots (20.8 percent) from the floor, including 3-of-17 (17.6 percent) from be-



2015-16 Game Recaps

yond the arc.

Kassidy Blough led Alma (3-5) with 17 points, and Raeanna Zink came off the bench to post a double-double with 15 points and 10 rebounds.

Natalie Kramer paced Lawrence (0-8) with 10 points, and Andrea Wilkinson added eight points and a team-high eight rebounds.

Lawrence, which committed 32 turnovers, got off to an incredibly slow start for the second straight night. Alma jumped out to a 20-2 lead after the first quarter, and the Scots would go on to lead 45-13 at the half.

The Scots would lead by as many as 48 points in the fourth quarter.

which outscored Lawrence 27-12 in the third period, would lead 58-32 after three.

Lawrence never got closer than 20 points in the fourth quarter.

The Cardinals got off to a fast start and led 19-6 after the first quarter, but Lawrence battled back in the second. The Vikings went on a 12-3 run to start the quarter as Cummins hit back-to-back 3-pointers, and Arco, Aubrey Scott and Sammi Jo Nixon all picked up baskets during that stretch.

Lawrence trimmed the lead to 22-18 after a Cummins 3-pointer, but the Cardinals responded with seven consecutive points and would lead 31-20 at the half.

December 30

St. Mary's (Minn.) 73, Lawrence 49

APPLETON, Wis. — A big third quarter led the St. Mary's (Minn.) University women's basketball team to



a 73-49 non-conference victory over Lawrence University at Alexander Gymnasium.

Haley Trom came off the bench to lead the Cardinals (9-1) with 15 points, and Micaela Meredith posted a double-double of 13 points and 11 rebounds.

Lawrence's Fanita Robins came off the bench to record her second double-figure scoring game of the season with 10 points. Nicole Cummins added nine points for the Vikings (0-9) as she went 3-for-3 from 3-point range. Liz Arco picked up six points, seven rebounds, three blocks and two steals for Lawrence.

St. Mary's led 31-20 at the half, and the Cardinals were up 12 when they went on a run midway through the third period. St. Mary's got back-to-back 3-pointers from Alexa Huisman as part of an 11-0 run to take a 46-22 lead.

The Cardinals later connected on four of five shots in one stretch to push their lead to 58-30. St. Mary's,

