



Lawrence University (0-16, 0-11 MWC) at Lake Forest College (8-7, 7-4 MWC)

Tuesday, Jan. 26, 7 p.m.

at Knox College (9-6, 4-6 MWC)

Saturday, Jan. 30, 3 p.m.



2015-16 LAWRENCE SCHEDULE

Date	Opponent	Time/Res.
11/17	at Marian	L, 57-28
11/21	at Ripon	L, 74-57
11/25	Lake Forest	L, 60-36
12/2	at Beloit	L, 93-73
12/5	Illinois College	L, 56-41
12/15	Concordia Chicago	L, 68-57
12/18-19 Post Exam Jam Tournament		
12/18	at Hope	L, 91-43
12/19	vs. Alma	L, 76-30
12/30	St. Mary's (Minn.)	L, 73-49
1/2	Grinnell	L, 50-37
1/6	at St. Norbert	L, 85-29
1/9	Monmouth	L, 68-49
1/12	at Carroll	L, 56-30
1/16	at Cornell	L, 68-54
1/20	Ripon	L, 54-39
1/23	Knox	L, 73-66
1/26	at Lake Forest	7:00 pm
1/30	at Knox	3:00 pm
2/3	St. Norbert	7:30 pm
2/6	at Illinois College	3:00 pm
2/9	Beloit	7:30 pm
2/17	Carroll	7:00 pm
2/20	at Monmouth	3:00 pm
2/26-27	MWC Tournament	TBA

Home games in bold

PROBABLE STARTERS

Lawrence



Forward	Patsy Kealey	Sr.	5-10
Forward	Andrea Wilkinson	Sr.	6-0
Guard	Olivia Hoesley	So.	5-8
Guard	Aubrey Scott	Jr.	5-9
Guard	Natalie Kramer	So.	5-7

Lake Forest



Forward	Brittany Avonts	Jr.	6-1
Forward	K.C. Stralka	Sr.	6-0
Forward	Paige Bobos	Fr.	6-0
Guard	Tara Gloystein	Jr.	5-10
Guard	Taylor Farrell	Fr.	5-6

Knox



Forward	Jasmine Binion	Sr.	5-10
Guard	Jamie Blue	Sr.	5-9
Guard	Naja Woods	So.	5-7
Guard	Sandra Gavazzi	Sr.	5-8
Guard	Karlie Thorn	Fr.	5-8

SCHEDULE

►The Vikings take to the road for a pair of Midwest Conference games this week. The Vikings travel to Lake Forest on Tuesday for a 7 p.m. game. Lawrence then heads south to Galesburg, Ill., for a 3 p.m. game on Saturday at Knox.

VIDEO WEBCAST

►The games feature a free video webcast available at: <http://portal.stretchinternet.com/lawrence/>. Dick Knapinski and Anthony Totoraitis are on the call for Lawrence home games. A link for the webcast is available on the Lawrence women's basketball page.

THE COACHES

►Ashley Wellman (Alma 2008) is in

her third season at Lawrence and has a record of 4-58 (.065).

►Tamlyn Tills (UW-La Crosse 1982) is in her eighth season at Lake Forest and has a record of 91-87



Ashley Wellman

(.511). She is in her 21st season overall and has a record of 227-294 (.436).

►Emily Cline (Cornell 2001) is in her eighth season at Knox and has a record of 61-115 (.347).

THE SERIES

►Lake Forest holds a 48-13 advantage in a series that goes back to the first season of Lawrence basketball, 1975-76. The Foresters have won 17 straight against Lawrence.

►Lawrence holds a 19-17 edge over Knox in a series that started during the 1989-90 season. Knox has won three straight against Lawrence, but the Vikings knocked off Knox 93-92 in the 2013-14 season.

LAST GAME

Knox blew out to a big early lead Saturday but had to hang on for a 73-66 Midwest Conference win over Lawrence at Alexander Gymnasium.

Patsy Kealey led Lawrence with a double-double of 21 points and 12 rebounds as four Vikings scored in double figures. Andrea Wilkinson also had a double-double for the Vikings with 10 points and 11 rebounds.



Liz Arco and Lauren Deveikis added 11 points apiece for Lawrence, and Arco picked up four blocks.

Jamie Blue also had a double-double for Knox with 20 points and 11 rebounds, and Naja Woods added 17 points.

Knox scored the first 16 points of the game and led 24-10 after the first quarter. The Vikings were still down by 15 when they stormed back in the final eight minutes of the second quarter.

Lawrence went on a 16-4 run to trim the margin to 35-32 with 1:32 left before the half. Arco scored the first six points of the run, and Kealey scored six points during that stretch. Knox would lead 39-34 at the half.

The Vikings trimmed the lead 41-40 on Deveikis' jumper early in the third quarter, but Knox scored the game's next nine points to stretch the lead back to 50-40. Lawrence finished the third quarter on a 12-5 run, capped by Leah Reeves' layup, to cut the margin to 55-52 after three.

Knox pushed the lead back to eight at 64-56, but the Vikings scored the next eight points, capped by Deveikis' 3-pointer, to tie the game at 64-



MWC Standings

	MWC		Overall	
	W	L	W	L
St. Norbert	11	0	12	4
Cornell	9	2	12	4
Grinnell	7	4	10	6
Lake Forest	7	4	8	7
Ripon	6	5	10	6
Illinois College	6	5	9	7
Carroll	5	5	6	9
Knox	4	6	9	6
Beloit	3	9	5	12
Monmouth	2	9	3	13
Lawrence	0	11	0	16

Games Tuesday

Lawrence at Lake Forest
Grinnell at Illinois College
Knox at Monmouth
Beloit at Carroll
St. Norbert at Ripon

Games Saturday

Lawrence at Knox
St. Norbert at Carroll
Ripon at Grinnell
Lake Forest at Monmouth
Cornell at Illinois College

64 with 2:59 left. Knox then scored the next six points to stretch the lead to 70-64, and the Vikings got no closer than four points after that.

VIKINGS UPDATE

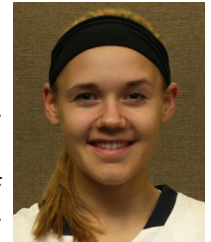
►Senior forward Patsy Kealey (New Rochelle, N.Y./Ursuline) was tough in the paint this past Saturday against Knox as she posted her third career double-double with 21 points and 12 rebounds against the Prairie Fire. The 12 rebounds is her second-best career game, eclipsed only by the 13 she had against Carroll earlier this month. The 21 points is the third



20-plus point game of Kealey's career. Kealey improved her season averages to 7.2 points and 6.1 rebounds per game.

►The 66 points is Lawrence's second-highest total of the season. The Vikings scored a season-best 73 points at Beloit back on Dec. 2.

►Sophomore guard Lauren Deveikis (Naperville, Ill./Neuqua Valley) posted her second double-figure scoring game of her career and her second in the past three games. After scoring a career-high 14 points at Cornell, Deveikis picked up 11 points vs. Knox this past Saturday.



Lauren Deveikis

►Senior forward Andrea Wilkinson (Racine, Wis./Lutheran) posted her fourth career double-double and the second this season when she scored 10 points and grabbed 11 rebounds to go along with four assists against Knox. Wilkinson is second on the team at 7.6 points per game and is averaging a team-high 6.5 rebounds per game.



Andrea Wilkinson

►Sophomore Liz Arco (Bartlett, Ill./Bartlett) picked up four blocks against Knox and has 57 for her career. That moves her past Lawrence Hall of Famer Felice Porrata into third place on the career list. Caresse Reiland is second with 79. Arco has 29 blocks this season and leads the Midwest Conference at 2.1 blocks per game.

►The Vikings are 11th in the Midwest Conference in scoring at 45.1 points per game. Lawrence is eighth in scoring defense at 68.9.

►Lawrence is shooting 31.4 percent from the floor, which ranks 11th in the

conference. The Vikings are seventh in field goal percentage defense at 40.1.

▶The Vikings are eighth in the league in 3-point shooting at 23.3 percent. Lawrence ranks eighth in defending the 3-pointer at 30.2 percent.

▶Lawrence ranks 11th in the conference in free-throw shooting at 59.3 percent.

SCOUTING LAKE FOREST

▶Lake Forest has now dropped two of its last three games after a 63-44 loss at Cornell this past Saturday. K.C. Stralka led Lake Forest with 12 points.



▶K.C. Stralka is eighth in the Midwest Conference in scoring at 12.7 points per game. She also is second in the league in rebounding at 9.9 per game.

▶Lake Forest is scoring 60.8 points per game, good for ninth in the league. The Foresters are sixth in scoring defense at 63.3.

▶Lake Forest is ninth in the league in shooting at 37.3 percent. The Foresters rank second in field goal percentage defense at 35.1 percent.

▶The Foresters are shooting 24.2 percent from beyond the arc, and that ranks ninth. Lake Forest is second in defending the 3-pointer at 26.6 percent.

SCOUTING KNOX

▶Knox has won two straight following its 73-66 win at Lawrence this past Saturday. The Prairie Fire face rival Monmouth on Tuesday before hosting the Vikings on Saturday.



▶Jamie Blue is the top scorer for Knox and ranks sixth in the conference at 14.4 points per contest. Naja Woods

Lawrence University Basketball Facts

Location	Appleton, Wis.
Founded	1847
Enrollment	1,500
President	Mark Burstein
Affiliation	NCAA Division III
Conference	Midwest Conference
Nickname	Vikings
School Colors	Blue and White
Home Arena	Alexander Gymnasium (1929, capacity 1,100)
Director of Athletics	Mike Szkodzinski
First season of basketball	1975-76
Seasons of basketball	39
All-time record	355-500 (.415)
Midwest Conference titles	2
1989-90, 1998-99	
Lake Michigan Conference titles	1
1988-89	
NCAA tournament appearances	1
1999	

and Karlie Thorn are tied for 12th in the league at 12.1 points per game.

▶Blue is the team's top rebounder and ranks fifth in the conference at 8.1 boards per game. Woods ranks second in the conference at 4.0 assists per game.

▶Knox doesn't have the volume of players it has had in past seasons and has backed off playing its "system." Knox still leads the Midwest Conference in scoring at 85.3 points per game. Knox is last in scoring defense at 81.9 points per game.

▶Knox is shooting 36.8 percent from the floor, good for 10th in the conference. Knox is eighth in field goal percentage defense at 42.7 percent.

▶The Prairie Fire has attempted a league-high 575 3-pointers this season and ranks eighth in the conference at 24.9 percent. Knox is fourth in defending the 3-pointer at 28.4 percent.

CAREER SCORING LEADERS

- 1,487 – Claire Getzoff, 2002-06
- 1,225 – Sarah O'Neil, 1988-92
- 1,186 – Felice Porrata, 2001-05
- 1,105 – Jackie Huss, 1993-97
- 975 – Katherine Lofgren, 1989-93
- 965 – Krista Tomter, 1989-93
- 956 – Kelly Mulcahy, 2004-08
- 942 – Gina Seegers, 1988-92
- 909 – Alex Deshler, 2010-14
- 895 – Molly Lieberman, 1993-97
- 868 – Carrie Van Groll, 2004-08
- 866 – Dara Rakun, 1998-2002
- 833 – Robin Chapman, 1979-83
- 830 – Vicki Corbeil, 1976-79
- 828 – Tracie Spangenberg, 1986-90
- 808 – Joy Rogatzki, 1996-2000
- 799 – Laura Aerts, 2006-10
- 751 – Alisa Haase, 1992-96
- 745 – Beth Pollnow, 1998-2002
- 723 – Deb Jaryszak, 1978-82
- 639 – Holly Skaer, 1988-91
- 622 – Mindy Rueden, 1996-2000
- 613 – Cathy Kaye, 2009-13
- 598 – Amber Lisowe, 2011-14
- 582 – Jenny Stoner, 2004-08

2015-16 Lawrence University Basketball
Lawrence University Combined Team Statistics (as of Jan 25, 2016)
All games

RECORD:	OVERALL	HOME	AWAY	NEUTRAL
ALL GAMES	0-16	0-8	0-7	0-1
CONFERENCE	0-11	0-6	0-5	0-0
NON-CONFERENCE	0-5	0-2	0-2	0-1

#	Player	gp-gs	min	avg	Total		3-Point		F-Throw		Rebounds				pf	dq	a	to	blk	stl	pts	avg
					fg-fga	fg%	3fg-fga	3fg%	ft-fga	ft%	off	def	tot	avg								
20	Elizabeth Arco	14-8	334	23.9	51-121	.421	0-0	.000	17-38	.447	18	47	65	4.6	55	5	23	59	29	21	119	8.5
23	Andrea Wilkinson	16-16	504	31.5	50-147	.340	0-5	.000	21-30	.700	25	79	104	6.5	42	0	26	47	15	21	121	7.6
02	Patsy Kealey	16-11	328	20.5	45-126	.357	4-11	.364	21-35	.600	41	56	97	6.1	52	3	16	46	3	24	115	7.2
24	Aubrey Scott	16-15	406	25.4	22-77	.286	7-34	.206	19-28	.679	21	33	54	3.4	19	0	12	39	1	11	70	4.4
10	Olivia Hoesley	16-14	334	20.9	23-92	.250	15-65	.231	1-2	.500	4	22	26	1.6	26	0	15	21	2	9	62	3.9
12	Lauren Deveikis	15-0	202	13.5	18-61	.295	5-17	.294	13-19	.684	6	6	12	0.8	12	0	8	8	0	7	54	3.6
15	Fanita Robins	14-2	202	14.4	8-51	.157	3-14	.214	27-44	.614	10	18	28	2.0	32	0	11	34	1	5	46	3.3
03	Natalie Kramer	16-14	393	24.6	15-64	.234	7-31	.226	10-20	.500	6	18	24	1.5	35	1	23	39	0	11	47	2.9
14	Sammi Jo Nixon	10-0	140	14.0	7-32	.219	3-18	.167	7-10	.700	0	10	10	1.0	6	0	10	14	1	2	24	2.4
05	Nicole Cummins	13-0	170	13.1	11-37	.297	6-20	.300	2-3	.667	0	9	9	0.7	9	0	13	18	1	7	30	2.3
44	Leah Reeves	16-0	187	11.7	14-33	.424	0-0	.000	5-12	.417	16	31	47	2.9	17	0	5	15	2	6	33	2.1
Team												19	41	60			10					
Total.....		16	3200		264-841	.314	50-215	.233	143-241	.593	166	370	536	33.5	305	9	162	350	55	124	721	45.1
Opponents.....		16	3200		395-985	.401	101-334	.302	211-319	.661	255	447	702	43.9	260	-	240	263	47	195	1102	68.9

TEAM STATISTICS	LU	OPP	Date	Opponent	Score	Att.
SCORING	721	1102	11/17/15	at Marian University	L 28-57	254
Points per game	45.1	68.9	* 11/21/15	at Ripon College	L 57-74	238
Scoring margin	-23.8	-	* 11/25/15	LAKE FOREST COLLEGE	L 36-60	299
FIELD GOALS-ATT	264-841	395-985	* 12/02/15	at Beloit College	L 73-93	150
Field goal pct	.314	.401	* 12/05/15	ILLINOIS COLLEGE	L 41-56	259
3 POINT FG-ATT	50-215	101-334	12/15/15	CONCORDIA CHICAGO	L 57-68	101
3-point FG pct	.233	.302	12/18/15	at Hope College	L 43-91	701
3-pt FG made per game	3.1	6.3	12/19/15	vs Alma College	L 30-76	146
FREE THROWS-ATT	143-241	211-319	12/30/15	ST. MARY'S UNIVERSIT	L 49-73	102
Free throw pct	.593	.661	* 01/02/16	GRINNELL COLLEGE	L 37-50	112
F-Throws made per game	8.9	13.2	* 01/06/16	at St. Norbert College	L 29-85	395
REBOUNDS	536	702	* 01/09/16	MONMOUTH COLLEGE	L 49-68	476
Rebounds per game	33.5	43.9	* 01/12/16	at Carroll University	L 33-56	58
Rebounding margin	-10.4	-	* 01/16/16	at Cornell College	L 54-68	335
ASSISTS	162	240	* 01/20/16	RIPON COLLEGE	L 39-54	212
Assists per game	10.1	15.0	* 01/23/16	KNOX COLLEGE	L 66-73	452
TURNOVERS	350	263				
Turnovers per game	21.9	16.4				
Turnover margin	-5.4	-				
Assist/turnover ratio	0.5	0.9				
STEALS	124	195				
Steals per game	7.8	12.2				
BLOCKS	55	47				
Blocks per game	3.4	2.9				
ATTENDANCE	2013	2277				
Home games-Avg/Game	8-252	7-304				
Neutral site-Avg/Game	-	1-146				

* - Conference game

Score by Periods	1st	2nd	3rd	4th	Totals
Lawrence University	139	193	181	208	721
Opponents	298	270	267	267	1102

2015-16 Lawrence University Basketball
Lawrence University Points-Rebounds-Assists (as of Jan 25, 2016)
All games

Opponent	Date	Score		02	03	05	10	12	14	15
				KEALEY,PAT	KRAMER,NAT	CUMMINS,NI	HOESLEY,OL	DEVEIKIS,L	NIXON,SAMM	ROBINS,FAN
at Marian University	11/17/15	28-57	L	4-5-0	0-1-2	3-0-0	3-2-0	0-1-1	1-0-2	3-1-1
at Ripon College	11/21/15	57-74	L	0-1-0	6-1-4	0-0-0	11-0-2	5-0-0	0-0-0	11-3-2
LAKE FOREST COLLEGE	11/25/15	36-60	L	3-6-0	1-4-1	0-0-2	0-1-1	2-1-0	4-3-0	3-4-0
at Beloit College	12/02/15	73-93	L	4-2-1	4-2-2	0-0-0	9-2-2	7-3-0	4-1-1	4-2-0
ILLINOIS COLLEGE	12/05/15	41-56	L	5-6-2	5-3-2	2-0-0	5-2-0	0-0-0	DNP	6-6-2
CONCORDIA CHICAGO	12/15/15	57-68	L	22-11-3	2-0-0	DNP	2-1-1	2-1-1	5-5-1	2-5-2
at Hope College	12/18/15	43-91	L	5-3-1	3-2-0	DNP	10-0-1	6-0-1	3-0-3	0-1-2
vs Alma College	12/19/15	30-76	L	7-5-2	10-3-0	DNP	1-3-1	0-3-0	0-0-0	0-1-0
ST. MARY'S UNIVERSIT	12/30/15	49-73	L	0-4-1	1-1-2	9-1-3	0-2-2	4-0-0	7-1-1	10-1-0
GRINNELL COLLEGE	01/02/16	37-50	L	7-2-0	2-2-1	0-0-0	6-1-1	DNP	0-0-2	0-1-0
at St. Norbert College	01/06/16	29-85	L	6-12-1	7-0-0	3-2-2	0-2-0	1-0-1	0-0-0	0-0-0
MONMOUTH COLLEGE	01/09/16	49-68	L	15-7-1	0-1-6	0-0-0	8-2-1	0-0-1	DNP	1-0-0
at Carroll University	01/12/16	33-56	L	8-13-0	5-2-1	2-2-0	3-1-1	2-1-1	DNP	DNP
at Cornell College	01/16/16	54-68	L	2-1-0	0-0-0	8-1-3	2-3-1	14-1-0	DNP	4-1-1
RIPON COLLEGE	01/20/16	39-54	L	6-7-1	1-1-2	0-0-0	0-3-1	0-1-0	DNP	DNP
KNOX COLLEGE	01/23/16	66-73	L	21-12-3	0-1-0	3-3-3	2-1-0	11-0-2	DNP	2-2-1

Opponent	Date	Score		20	23	24	44
				ARCO,ELIZA	WILKINSON,	SCOTT,AUBR	REEVES,LEA
at Marian University	11/17/15	28-57	L	0-3-0	8-11-0	2-6-0	4-7-0
at Ripon College	11/21/15	57-74	L	18-8-5	6-2-1	0-1-2	0-1-0
LAKE FOREST COLLEGE	11/25/15	36-60	L	12-3-1	8-4-1	0-2-3	3-3-1
at Beloit College	12/02/15	73-93	L	15-4-4	14-6-1	12-3-1	0-3-0
ILLINOIS COLLEGE	12/05/15	41-56	L	12-9-0	4-10-2	2-5-0	0-0-0
CONCORDIA CHICAGO	12/15/15	57-68	L	DNP	14-15-5	8-7-0	0-7-0
at Hope College	12/18/15	43-91	L	6-10-2	6-2-1	0-4-0	4-1-1
vs Alma College	12/19/15	30-76	L	0-3-1	8-8-0	0-5-1	4-5-1
ST. MARY'S UNIVERSIT	12/30/15	49-73	L	6-7-1	4-2-1	8-1-0	0-1-1
GRINNELL COLLEGE	01/02/16	37-50	L	11-5-4	8-10-0	3-3-1	0-3-0
at St. Norbert College	01/06/16	29-85	L	6-4-1	0-2-2	2-4-0	4-0-1
MONMOUTH COLLEGE	01/09/16	49-68	L	12-2-2	7-4-0	6-1-0	0-0-0
at Carroll University	01/12/16	33-56	L	DNP	4-7-5	2-5-0	7-4-0
at Cornell College	01/16/16	54-68	L	2-1-1	9-5-2	10-2-0	3-8-0
RIPON COLLEGE	01/20/16	39-54	L	8-2-0	11-5-1	13-4-3	0-0-0
KNOX COLLEGE	01/23/16	66-73	L	11-4-1	10-11-4	2-1-1	4-4-0

2015-16 Game Recaps

November 17

Marian 57, Lawrence 28

FOND DU LAC, Wis. — The Lawrence University women's basketball team struggled out of the gate and Marian University posted a 57-28 non-conference victory in the season opener at Sadoff Gymnasium.

Marian bolted to a 25-7 lead after the first quarter, and the Sabres led 36-10 at the half.

Nicole Paulus led Marian and all scorers with 19 points, and Brittany Bauman added 11.

Andrea Wilkinson led Lawrence with eight points and pulled down a game-high 12 rebounds to go along with three steals. The Vikings hit on only 10-of-48 shots from the floor (20.8 percent), and Lawrence shot just 2-of-13 (15.4 percent) from beyond the arc.

Marian opened the second half by scoring 11 consecutive points to push the lead to 47-10 and never led by less than 27 points the rest of the way.

November 21

Ripon 74, Lawrence 57

RIPON, Wis. — The Ripon College women's basketball team pulled away in the second quarter and kept Lawrence University at bay the rest of the game in a 74-57 Midwest Conference victory at the Storzer Center.

Freshman Maggie Oimoen scored 22 points on 11-of-14 shooting to pace Ripon (2-0, 1-0 MWC).

Liz Arco came off the bench to pace Lawrence (0-2, 0-1) with 18 points, eight rebounds and five assists. Fanita Robins and Olivia Hoesley added 11 points apiece for Lawrence.

Ripon led 15-14 late in the first quarter, but the Red Hawks scored eight consecutive points. The game then see-sawed as Lawrence trimmed the lead back seven before Ripon stretched it all the way to 33-16.

Hoesley then hit a 3-pointer, Robins connected on back-to-back jumpers and Arco hit a jumper to cut the lead to 37-25 at the half.

Lawrence was unable to put a dent in Ripon's lead in the final two quarters. The Vikings never got closer than 10 points, but Ripon didn't pull away.

Lawrence cut the lead to 62-51 on Natalie Kramer's 3-pointer with 5:47 left in the fourth quarter before Ripon finally put the game away in the final minutes.

November 25

Lake Forest 60, Lawrence 36

APPLETON, Wis. — The Lake Forest College women's basketball team jumped out to a 12-0 lead and went on to a 60-36 Midwest Conference win over Lawrence University at Alexander Gymnasium.

K.C. Stralka posted a double-double with 10 points and 10 rebounds for the Foresters (1-1, 1-0 MWC). Brie Majkowski, Michelle Ricolcol and Brittany Avonts had eight points apiece for Lake Forest.

Liz Arco scored a game-high 12 points to pace Lawrence (0-3, 0-2), and Andrea Wilkinson added eight points.

The Foresters kept Lawrence off the board until Sammi Jo Nixon's 3-pointer with 3:41 left in the opening quarter trimmed the margin to 12-3. Lake Forest would go on to lead 15-7 after the opening 10 minutes.

The Vikings got a layup from Arco and a 3-pointer from Patsy Kealey to cut the lead to 15-12 with 8:40 left in the second quarter. Lake Forest finished the first half on a 10-2 run and pushed the lead to 25-14 at the half.

The Foresters pushed the lead to 20 points late in the third quarter and would go on to lead by as many as 26 points in the final period.

December 2

Beloit 93, Lawrence 73

BELOIT, Wis. — Lana Wieseman and Nora Polaski combined to score 57 points to lead the Beloit College women's basketball team to a 93-73 Midwest Conference win over Lawrence University at Flood Arena.

Wieseman scored 35 points and grabbed 12 rebounds and Polaski added 22 points to lead Beloit (3-3, 2-1 MWC). Wieseman hit 12-of-19 shots from the floor, and Polaski was a perfect 10-for-10.

Liz Arco paced Lawrence (0-4, 0-3) with 15 points and a team-high four assists. Andrea Wilkinson added 14 points and a team-best six rebounds for the Vikings. Aubrey Scott chipped in with a career-high 12 points as she hit 5-of-7 shots from the floor, including 2-of-2 from 3-point range.

Lawrence led 15-10 in the first quarter, but Beloit outscored the Vikings 14-6 over the final four minutes to grab a 24-21 lead after one quarter.

A 9-0 run by the Bucs helped them take control in the second quarter and push the lead to 44-32. Beloit led 48-38 at the half.

The Vikings never got closer than 10 points in the third quarter, but the Bucs couldn't put Lawrence away. Scott's jumper cut Beloit's advantage to 68-55 after three quarters.

Lawrence trimmed the margin back to 10 points twice, the first on Scott's 3-pointer and the second on Wilkinson's jumper to make it 70-60. Beloit responded with a 15-0 run to push the lead to 85-60 and seal the victory.

December 5

Illinois College 56, Lawrence 41

APPLETON, Wis. — The Illinois College women's basketball team pulled away from Lawrence University in



2015-16 Game Recaps

the final quarter and posted a 56-41 Midwest Conference victory at Alexander Gymnasium.

Brielle Greenleaf led Illinois College (4-2, 2-0 MWC) with 11 points, and Melissa Solorio and Jill Friedrich added 10 points apiece. Solorio completed a double-double with 10 rebounds.

Liz Arco paced Lawrence (0-5, 0-4) with 12 points, and she picked up nine rebounds. Andrea Wilkinson led the Vikings with 10 rebounds.

Illinois College took control of the game late in the second quarter and early in the third. The Lady Blues held Lawrence scoreless for a stretch of 9:32 that finally ended when Olivia Hoesley hit a 3-pointer with 5:43 left in the third quarter to cut the lead to 32-23.

Illinois College would push its lead back to as many as 14 in the third quarter, but a pair of free throws from Fanita Robins and a jumper from Patsy Kealey trimmed the margin back to 40-30 heading to the fourth.

The Lady Blues scored the first three points of the fourth quarter, but Robins answered with a 3-pointer to cut the lead back to 43-33 with 8:58 left in the game.

Illinois College then scored six of the game's next seven points to build a 49-34 advantage. Lawrence never got closer than 13 points after that.

The Vikings fell behind 9-2 to start the game, but Lawrence battled back to cut the margin to 12-11 after the first quarter.

Lawrence took its first lead at 13-12 on Arco's jumper to start the second quarter. The Vikings later went on a 7-0 run, capped by Kealey's jumper with 5:15 left in the opening half, to grab a 20-18 edge. Illinois College then held Lawrence scoreless for the rest of the first half and led 28-20 at the break.

December 15

Concordia Chicago 68, Lawrence 57

APPLETON, Wis.

— The Concordia University Chicago women's basketball team scored six consecutive points in a stretch of 38 seconds in the final minutes and went on to pull out a 68-57 non-conference win over Lawrence University at Alexander Gymnasium.

Lauren Orr paced Concordia (3-3) with 18 points, and Courtney Lofink added 12 points and five assists for the Cougars.

Patsy Kealey and Andrea Wilkinson both posted double-doubles for the Vikings (0-6), who were playing without top scorer Liz Arco.

Kealey finished with a game-high 22 points on 10-for-12 shooting from the floor to go with 11 rebounds. Wilkinson had 14 points and a game-high 15 rebounds to go with five assists, three blocks and two steals. Aubrey Scott added eight points and seven rebounds for the Vikings.

Lawrence battled back from a six-point halftime deficit in the third quarter to lead by five points in the period. The Vikings opened the period with an 8-1 run, capped by back-to-back layups from freshman Sammi Jo Nixon, to take a 28-27 lead with 6:42 left in the quarter.

The Vikings were up one when a layup from Kealey and free throws from Wilkinson and Kealey gave Lawrence a 43-38 edge with 31 seconds left. Orr hit a jumper to cut the lead to 43-40 after three quarters.

The teams traded the lead in the fourth quarter, but the Vikings were up 52-51 after Kealey's jumper with 4:36 remaining. Taylor Jacobsen hit a 3-pointer for the Cougars, and Sheyla Kahalehoe followed with a layup to give Concordia a 56-52 edge.

Kealey hit another jumper to trim the margin to 56-54, but the Cougars then put on the decisive spurt. Orr hit a 3-pointer and Erin Jacobsen scored



the next three points to stretch the margin to 62-54 with 1:53 left. The Cougars then hit five of their next six free throws to seal the victory.

Turnovers and missed free throws really hurt the Vikings. Against the Cougars' pressing defense, Lawrence turned the ball over a season-high 35 times. Concordia was whistled for 26 fouls, but the Vikings were unable to take advantage of that. Lawrence went just 16-of-35 from the foul line.

December 18

No. 4 Hope 91, Lawrence 43

HOLLAND, Mich.

— The fourth-ranked Hope College women's basketball team jumped out to a huge early lead and cruised to a 91-43 non-conference win over Lawrence University at the Post Exam Jam Tournament.

The Flying Dutch (7-0) rolled to a 31-4 lead after the first quarter and had expanded that advantage to 51-15 at the half. Hope would go on to lead by as many as 56 points in the final quarter.

Maura McAfee led six Hope players in double figures with 16 points. Francesca Buchanan posted a double-double for the Dutch with 12 points and 11 rebounds.

Olivia Hoesley led Lawrence (0-7) with 10 points. Liz Arco added six points, pulled down a team-high 10 rebounds and piled up six blocks.

December 19

Alma 76, Lawrence 30

HOLLAND, Mich.

— The Lawrence University women's basketball team shot just 20 percent from the floor and fell 76-30 to Alma College in a non-conference game at the Post Exam Jam.

The Vikings hit just 11-of-53 shots (20.8 percent) from the floor, including 3-of-17 (17.6 percent) from be-



2015-16 Game Recaps

yond the arc.

Kassidy Blough led Alma (3-5) with 17 points, and Raeanna Zink came off the bench to post a double-double with 15 points and 10 rebounds.

Natalie Kramer paced Lawrence (0-8) with 10 points, and Andrea Wilkinson added eight points and a team-high eight rebounds.

Lawrence, which committed 32 turnovers, got off to an incredibly slow start for the second straight night. Alma jumped out to a 20-2 lead after the first quarter, and the Scots would go on to lead 45-13 at the half.

The Scots would lead by as many as 48 points in the fourth quarter.

December 30

St. Mary's (Minn.) 73, Lawrence 49

APPLETON, Wis. — A big third quarter led the St. Mary's (Minn.) University women's basketball team to a 73-49 non-conference victory over Lawrence University at Alexander Gymnasium.



Haley Trom came off the bench to lead the Cardinals (9-1) with 15 points, and Micaela Meredith posted a double-double of 13 points and 11 rebounds.

Lawrence's Fanita Robins came off the bench to record her second double-figure scoring game of the season with 10 points. Nicole Cummins added nine points for the Vikings (0-9) as she went 3-for-3 from 3-point range. Liz Arco picked up six points, seven rebounds, three blocks and two steals for Lawrence.

St. Mary's led 31-20 at the half, and the Cardinals were up 12 when they went on a run midway through the third period. St. Mary's got back-to-back 3-pointers from Alexa Huisman as part of an 11-0 run to take a 46-22 lead.

The Cardinals later connected on four of five shots in one stretch to push their lead to 58-30. St. Mary's,

which outscored Lawrence 27-12 in the third period, would lead 58-32 after three.

Lawrence never got closer than 20 points in the fourth quarter.

The Cardinals got off to a fast start and led 19-6 after the first quarter, but Lawrence battled back in the second. The Vikings went on a 12-3 run to start the quarter as Cummins hit back-to-back 3-pointers, and Arco, Aubrey Scott and Sammi Jo Nixon all picked up baskets during that stretch.

Lawrence trimmed the lead to 22-18 after a Cummins 3-pointer, but the Cardinals responded with seven consecutive points and would lead 31-20 at the half.

January 2

Grinnell 50, Lawrence 37

APPLETON, Wis. — The Grinnell College women's basketball team held off a stubborn Lawrence University squad to post a 50-37 Midwest Conference victory at Alexander Gymnasium.



Sophia Gatton led three Grinnell players in double figures with 14 points. Kayla Morrissey added 13 points and Anne Boldt had 11 for the Pioneers (6-5, 3-3 MWC).

Liz Arco paced Lawrence (0-10, 0-5) with 11 points. She also added five rebounds, five blocks, four assists and four steals. Andrea Wilkinson pulled down a game-high 10 rebounds for Lawrence to go along with eight points.

Grinnell scored the game's first seven points and seemed to maintain that advantage throughout but had trouble putting away the Vikings.

Lawrence's Olivia Hoesley hit a 3-pointer to trim Grinnell's lead to 14-8 after the first quarter. The Vikings cut the lead to four twice early in the second quarter on baskets by Aubrey Scott and Arco, but Grinnell finally pushed the lead to 29-18 in the final minute of the period.

Grinnell started to pull away by scoring the first seven points of the third quarter, capped by Boldt's 3-pointer, for a 36-20 lead. The Vikings responded as Wilkinson and Arco picked up two baskets apiece to cut the margin back to 39-28 late in the third.

The Pioneers finally sealed the win by scoring six consecutive points midway through the fourth quarter to grab a 47-30 lead. Lawrence didn't get closer than 13 points the rest of the way.

January 6

St. Norbert 85, Lawrence 29

DE PERE, Wis. — Five St. Norbert College women's basketball players scored in double figures as the Green Knights topped Lawrence 85-29 in a Midwest Conference game at Schuldes Sports Center.



Jill Kleiman finished with 13 points to lead the Green Knights (8-4, 7-0 MWC) and all scorers. Brianna Byrne added 12 points and Regan Carmichael and Stephanie Wiegman had 11 points apiece.

Natalie Kramer led Lawrence (0-11, 0-7) with seven points, and Liz Arco and Patsy Kealey had six points apiece. Kealey also pulled down a game-high 12 rebounds.

After St. Norbert scored the game's first eight points, the Vikings bounced right back. Lawrence went on a 9-2 run, capped by Kramer's 3-pointer, to cut the lead to 10-9 with 2:28 left in the opening period. St. Norbert would go on to lead 15-11 after one quarter.

The Green Knights then blew the game open in the second quarter by outscoring the Vikings 27-6 and pushed the lead to 42-17 at the half.

St. Norbert continued to pull away and would lead by as many as 58 points.

2015-16 Game Recaps

January 9

Monmouth 68, Lawrence 49

APPLETON, Wis. — The Monmouth College women's basket-



ball team used a huge fourth quarter to pull away and post a 68-49 Midwest Conference win over Lawrence University at Alexander Gymnasium.

Monmouth led by seven points entering the fourth quarter when the Scots exploded for 23 points and rolled to the 19-point win.

Tia Robertson came off the bench for Monmouth (2-11, 1-7 MWC) to record a double-double with 26 points and 10 rebounds. Robertson went 10-for-13 from the floor and was 6-for-6 from the foul line. Katie Houston also had a double-double for the Scots with 14 points and a game-high 12 rebounds, and Keri Dodson finished with 12 points.

Patsy Kealey came off the bench to lead the Vikings (0-12, 0-7) with 15 points, seven rebounds and four steals. Liz Arco added 12 points for Lawrence.

The big trio of Dodson, Robertson and Houston did most of the damage for the Scots in the second half. Dodson scored 10 of her 12 points after the break, Robertson picked up nine points and Houston had seven.

Monmouth really beat the Vikings up at the foul line, especially in the second half. The Scots hit 15-of-18 free throws in the second half and finished 21-of-28 from the line for the game. Lawrence attempted half as many free throws and went 10-for-14 for the game.

After enjoying a solid first half shooting the ball, Lawrence went cold in the second half. The Vikings went 8-for-28 (28.6 percent) from the floor in the second half and that included 0-for-6 from 3-point range.

Lawrence came out strong and built a 10-2 lead after Andrea Wilkinson's jumper with 5:45 left in the first quarter. The Scots finished the first

quarter on a 12-2 run and led 14-12 after one period. Monmouth would lead by as many as eight points in the second quarter, but Lawrence managed to trim the margin to 32-26 at the half.

January 12

Carroll 56, Lawrence 33

WAUKESHA, Wis.

— The Carroll University women's basketball team steadily pulled away and posted a 56-33 Midwest Conference win over Lawrence University at Van Male Field House.

Brittany Groer paced Carroll with a double-double of 24 points and 12 rebounds. Malory Christenson added 14 points for the Pioneers (5-8, 4-4 MWC).

Patsy Kealey paced Lawrence (0-13, 0-8) with eight points and a game-high 13 rebounds. Freshman Leah Reeves added seven points, and Andrea Wilkinson had a team-best five assists for the Vikings.

Carroll scored eight of the final nine points in the first quarter and led 15-6 after the opening period. Lawrence closed to within eight points on Nicole Cummins' layup with 6:52 left in the second quarter, but the Pioneers finished the half on a 12-2 run and led 32-14 at the break.

The Pioneers inched out to a 43-22 lead after three quarters and would lead by as many as 28 points in the fourth.

January 16

Cornell 68, Lawrence 54

MOUNT VERNON, Iowa

— The Cornell College women's basketball team grabbed a big early lead and went on to a 68-54 Midwest Conference victory over Lawrence University at the Multi-Sport Center.

Diamond Boyd posted a double-double with 20 points and 13



rebounds to pace Cornell (10-4, 7-2 MWC).

Lauren Deveikis came off the bench to lead Lawrence (0-14, 0-9) with 14 points in just 17 minutes of action. Aubrey Scott added 10 points and Leah Reeves grabbed eight rebounds for the Vikings.

Cornell went on a 21-2 run over the final 7:16 of the first quarter and bolted to a 28-7 lead after the first quarter.

The Vikings fought back in the second period with some help from Deveikis. Lawrence trailed 38-17 but went on a 10-1 run, with Deveikis scoring five in that stretch, to cut the margin to 39-27 with 1:48 left in the quarter.

Lawrence got to 41-30 after a Deveikis 3-pointer, but Cornell then made four consecutive free throws to lead 45-30 at the half. The Rams were 17-for-19 from the foul line in the first half and went 22-for-25 for the game.

Cornell jumped on the Vikings in the third quarter and limited Lawrence to just four points in the period. Cornell led 61-34 entering the fourth quarter, but Lawrence chipped away at the lead in the final period to close to within 14.

January 20

Ripon 54, Lawrence 39

APPLETON, Wis.

— The Ripon College women's basketball team pulled



away in the second half and posted a 54-39 Midwest Conference win over Lawrence University at Alexander Gymnasium.

Jonalee Elliott scored 10 points, and Maggie Oimoen added nine to pace the Red Hawks (10-6, 6-5 MWC).

Aubrey Scott scored 13 points, grabbed four rebounds, picked up three assists and added three steals to lead Lawrence (0-15, 0-10). Andrea Wilkinson added 11 points, and Liz Arco came off the bench and chipped in with eight points.

2015-16 Game Recaps

Lawrence trailed by as many as 11 points in the second quarter but went on a 9-2 run over the final 3:00 of the first half to trim the margin to 22-18 at the break. Arco scored six points in that stretch and Scott added a three-point play.

Ripon opened the second half by outscoring Lawrence 11-5 over the first 7:29 of the third quarter to stretch the lead to 33-23. The Vikings trailed by nine after three periods and couldn't get any closer in the fourth quarter.

January 23

Knox 73, Lawrence 66

APPLETON, Wis. — The Knox College women's basketball team



blew out to a big early lead but had to hang on for a 73-66 Midwest Conference win over Lawrence University at Alexander Gymnasium.

Patsy Kealey led Lawrence with a double-double of 21 points and 12 rebounds as four Vikings scored in double figures. Andrea Wilkinson also had a double-double for the Vikings with 10 points and 11 rebounds.

Liz Arco and Lauren Deveikis added 11 points apiece for Lawrence, and Arco picked up four blocks.

Jamie Blue also had a double-double for Knox (9-6, 4-6 MWC) with 20 points and 11 rebounds, and Naja Woods added 17 points.

Knox scored the first 16 points of the game and led 24-10 after the first quarter. The Vikings were still down by 15 when they stormed back in the final eight minutes of the second quarter.

Lawrence (0-16, 0-11) went on a 16-4 run to trim the margin to 35-32 with 1:32 left before the half. Arco scored the first six points of the run, and Kealey scored six points during that stretch. Knox would lead 39-34 at the half.

The Vikings trimmed the lead 41-

40 on Deveikis' jumper early in the third quarter, but Knox scored the game's next nine points to stretch the lead back to 50-40. Lawrence finished the third quarter on a 12-5 run, capped by Leah Reeves' layup, to cut the margin to 55-52 after three.

Knox pushed the lead back to eight at 64-56, but the Vikings scored the next eight points, capped by Deveikis' 3-pointer, to tie the game at 64-64 with 2:59 left. Knox then scored the next six points to stretch the lead to 70-64, and the Vikings got no closer than four points after that.