



# Lawrence University (0-18, 0-13 MWC) vs. St. Norbert College (14-4, 13-0 MWC)



Wednesday, Feb. 3, 7:30 p.m.

at Illinois College (9-9, 6-7 MWC)

Saturday, Feb. 6, 3 p.m.

## 2015-16 LAWRENCE SCHEDULE

Date	Opponent	Time/Res.
11/17	at Marian	L, 57-28
11/21	at Ripon	L, 74-57
<b>11/25</b>	<b>Lake Forest</b>	<b>L, 60-36</b>
12/2	at Beloit	L, 93-73
<b>12/5</b>	<b>Illinois College</b>	<b>L, 56-41</b>
<b>12/15</b>	<b>Concordia Chicago</b>	<b>L, 68-57</b>
12/18-19 Post Exam Jam Tournament		
12/18	at Hope	L, 91-43
12/19	vs. Alma	L, 76-30
<b>12/30</b>	<b>St. Mary's (Minn.)</b>	<b>L, 73-49</b>
<b>1/2</b>	<b>Grinnell</b>	<b>L, 50-37</b>
1/6	at St. Norbert	L, 85-29
<b>1/9</b>	<b>Monmouth</b>	<b>L, 68-49</b>
1/12	at Carroll	L, 56-30
1/16	at Cornell	L, 68-54
<b>1/20</b>	<b>Ripon</b>	<b>L, 54-39</b>
<b>1/23</b>	<b>Knox</b>	<b>L, 73-66</b>
1/26	at Lake Forest	L, 91-50
1/30	at Knox	L, 86-62
<b>2/3</b>	<b>St. Norbert</b>	<b>7:30 pm</b>
2/6	at Illinois College	3:00 pm
<b>2/9</b>	<b>Beloit</b>	<b>7:30 pm</b>
<b>2/17</b>	<b>Carroll</b>	<b>7:00 pm</b>
2/20	at Monmouth	3:00 pm
2/26-27	MWC Tournament	TBA

Home games in bold

## PROBABLE STARTERS

### Lawrence



Forward	Patsy Kealey	Sr.	5-10
Forward	Andrea Wilkinson	Sr.	6-0
Guard	Olivia Hoesley	So.	5-8
Guard	Aubrey Scott	Jr.	5-9
Guard	Natalie Kramer	So.	5-7

### St. Norbert



Center	Mallory Nickerson	Jr.	6-1
Forward	Stephanie Weigman	Sr.	5-11
Forward	Brianna Byrne	Jr.	5-10
Guard	Regan Carmichael	Jr.	5-8
Guard	Jill Kleiman	Jr.	5-6

### Illinois College



Forward	Shannen Quehl	Fr.	5-10
Forward	Brielle Greenleaf	Fr.	5-10
Forward	Hanna Bergkoetter	Sr.	5-11
Guard	Sydney Lett	Fr.	5-5
Guard	Jill Friedrich	Sr.	5-5

## SCHEDULE

►The Vikings host St. Norbert in a Midwest Conference game on Wednesday at Alexander Gymnasium at 7:30 p.m. Lawrence then takes the long road trip to Illinois College for a 3 p.m. game on Saturday.

## VIDEO WEBCAST

►The games feature a free video webcast available at: <http://portal.stretchinternet.com/lawrence/>. Dick Knapinski and Anthony Totoraitis are on the call for Lawrence home games. A link for the webcast is available on the Lawrence women's basketball page.

## THE COACHES

►Ashley Wellman (Alma 2008) is in her third season at Lawrence and has a re-

cord of 4-60 (.063).

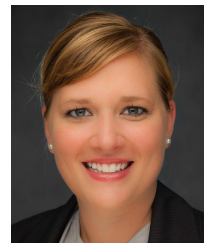
►Connie Tilley (UW-La Crosse 1974) is in her 39th season at St. Norbert and has a record of 645-285 (.694).

►Lora Westling (Washburn 2005) is in her third season at Illinois College and has a record of 35-30 (.538).

## THE SERIES

►St. Norbert holds a 69-13 advantage in a series that started in Lawrence's first season of basketball, 1975-76. The Green Knights have won the last 21 meetings.

►Illinois College took a 19-18 lead in the series with its win earlier this season. The Lady Blues have won five



Ashley Wellman

straight in a series that began in the 1991-92 season. Lawrence's last win was a 56-53 triumph in 2012-13.

### LAST GAME

Knox got off to a quick start in each half this past Saturday and rode that to an 86-62 Midwest Conference victory over Lawrence.

Jamie Blue and Hailey Leinart scored 16 points apiece to pace Knox.

Andrea Wilkinson posted a double-double with a team-high 14 points and game-high 10 rebounds for the Vikings.

In what has become an all-too-familiar storyline for the Vikings, Lawrence fell behind by double digits early. Knox led by 10 points just six minutes into the game and had a 23-10 advantage after the first quarter.

The Vikings were down by 16 when they battled back in the second quarter. Lawrence got four points from Natalie Kramer and a 3-pointer from Nicole Cummins as part of 9-2 run that cut the lead to 30-21.

Knox then countered by outscoring the Vikings 9-3 over the final 1:42 of the second quarter to lead 41-26 at halftime. The Prairie Fire then put the game away as it went on a 21-6 run over the final 4:30 of the third quarter for a 71-41 lead.

Lawrence never got closer than the final margin of 24 points the rest of the way.

### VIKINGS UPDATE

▶Slow starts continue to plague the Vikings. Lawrence was outscored 23-10 in the first quarter at Knox and 20-8 in the opening period at Lake Forest. Lawrence has been outscored by an average of 10.2 points in the first quarter this season. The good news the Vikings' margin in the other three quarters is much closer.

▶Senior forward Andrea Wilkinson (Racine, Wis./Lutheran) continues to put on a strong finish to her final season with the Vikings. Wilkinson



### MWC Standings

	MWC		Overall	
	W	L	W	L
St. Norbert	13	0	14	4
Cornell	10	2	13	4
Grinnell	9	4	12	6
Lake Forest	9	4	10	7
Ripon	6	7	10	8
Illinois College	6	7	9	9
Knox	5	7	10	7
Carroll	5	7	6	11
Beloit	4	9	6	12
Monmouth	3	10	4	14
Lawrence	0	13	0	18

### Games Wednesday

St. Norbert at Lawrence  
 Carroll at Ripon  
 Monmouth at Grinnell  
 Illinois Tech at Lake Forest  
 Illinois College at Beloit  
 Cornell at Knox

### Games Saturday

Lawrence at Illinois College  
 Ripon at Cornell  
 Grinnell at Carroll  
 Beloit at St. Norbert  
 Lake Forest at Knox

posted her fifth double-double of her career and the third this season with 14 points and 10 rebounds at Knox this past Saturday. Wilkinson has scored in double figures in the past four games, averaging 12.5 points per game over that stretch. She scored a season-high 15 points at Lake Forest on Jan. 26. Wilkinson leads the team in scoring at 8.3 points per game and is tops on the squad in rebounding at 6.7 per contest.



Andrea Wilkinson

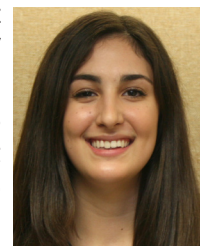
▶Senior Patsy Kealey (New Rochelle, N.Y./Ursuline) has also been strong over the same stretch. She has averaged close to a double-double at 9.8 points and 8.5 rebounds per game.



Patsy Kealey

Kealey is now averaging 7.1 points and 6.2 rebounds per game on the season.

▶Sophomore Liz Arco (Bartlett, Ill./Bartlett) was limited to just eight minutes against Knox but managed to pick up two more blocked shots. Arco now has 32 blocks on the season and ranks first in the Midwest Conference at 2.0 blocks per game.



Elizabeth Arco

Arco now has 60 blocks for her career, and that ranks third in Lawrence history. Only Quinn Bohman (147) and Caresse Reiland (79) are ahead of Arco.

▶The Vikings are 11th in the Midwest Conference in scoring at 46.3 points per game. Lawrence is ninth in scoring defense at 71.1.

▶Lawrence is shooting 31.8 percent from the floor, which ranks 11th in the conference. The Vikings are seventh in field goal percentage defense at 41.1.

▶The Vikings appeared to be making some progress on their 3-point shooting before a rough two-game stretch that saw the Vikings go 1-for-28 from beyond the arc. Lawrence has rebounded a bit since then, going 6-for-25 (24 percent) in the last two games. Lawrence is 10th in the league in 3-point shooting at 23.3 percent. Lawrence ranks 10th in defending the 3-pointer at 32.2 percent.

▶Lawrence ranks 11th in the conference in free-throw shooting at 59.7 percent, but that number has been

steadily rising since mid-December. Since the Dec. 19 game vs. Alma, Lawrence is shooting a very respectable 65.8 percent (102-155) from the foul line.

### SCOUTING ST. NORBERT

►St. Norbert pushed its win streak to seven games with a 65-49 win at Carroll this past Saturday. This current streak started with a win over Lawrence back on Jan. 6.



►The Green Knights are three games ahead of Cornell in the win column for first place in the Midwest Conference. With five games to play, including a regular-season finale at Cornell, the Green Knights control their own destiny for a possible third consecutive league championship.

►St. Norbert's balanced attack is led by three players scoring in double figures. Regan Carmichael is tops on the team at 11.6 points per game, followed by Brianna Byrne at 11.3 and Stephanie Weigman at 10.3. Carmichael also is the top rebounder at 5.4 per game.

►St. Norbert is the top defensive team in the league at 51.2 points per game. The Green Knights are second in scoring at 69.3.

►St. Norbert is the best shooting team in the MWC at 43.4 percent and ranks fourth in field goal percentage defense at 36.9 percent.

►St. Norbert is second in the league in 3-point shooting at 34.2 percent. The Green Knights are seventh in defending the 3-pointer at 29.5 percent.

### SCOUTING ILLINOIS COLLEGE

►Illinois College extended its losing skid to four games with a 77-58 loss to visiting Cornell this past Satur-



Lawrence University Basketball Facts	
Location	Appleton, Wis.
Founded	1847
Enrollment	1,500
President	Mark Burstein
Affiliation	NCAA Division III
Conference	Midwest Conference
Nickname	Vikings
School Colors	Blue and White
Home Arena	Alexander Gymnasium (1929, capacity 1,100)
Director of Athletics	Mike Szkodzinski
First season of basketball	1975-76
Seasons of basketball	39
All-time record	355-502 (.414)
Midwest Conference titles	2
	1989-90, 1998-99
Lake Michigan Conference titles	1
	1988-89
NCAA tournament appearances	1
	1999

day. The Lady Blues travel to Beloit on Wednesday before hosting Lawrence on Saturday.

►Guard Jill Friedrich is tops on the team in scoring at 10.1 points per game. Melissa Solario is averaging 11 points per game but hasn't played since early January. The top rebounder on the squad is Hanna Bergkoetter at 4.6 per game.

►Illinois College ranks eighth in the league in scoring at 62.7 points per game. The Lady Blues are fifth in scoring defense at 61.4.

►Illinois College is shooting 38.2 percent from the floor, good for eighth in the MWC. The Lady Blues are sixth in field goal percentage defense at 38.5 percent.

►Illinois College is shooting 28.2 percent from 3-point range, and that ranks seventh in the conference. The Lady Blues are eighth in defending the 3-pointer at 29.7 percent.

CAREER SCORING LEADERS	
1.	1,487 – Claire Getzoff, 2002-06
2.	1,225 – Sarah O'Neil, 1988-92
3.	1,186 – Felice Porrata, 2001-05
4.	1,105 – Jackie Huss, 1993-97
5.	975 – Katherine Lofgren, 1989-93
6.	965 – Krista Tomter, 1989-93
7.	956 – Kelly Mulcahy, 2004-08
8.	942 – Gina Seegers, 1988-92
9.	909 – Alex Deshler, 2010-14
10.	895 – Molly Lieberman, 1993-97
11.	868 – Carrie Van Groll, 2004-08
12.	866 – Dara Rakun, 1998-2002
13.	833 – Robin Chapman, 1979-83
14.	830 – Vicki Corbeil, 1976-79
15.	828 – Tracie Spangenberg, 1986-90
16.	808 – Joy Rogatzki, 1996-2000
17.	799 – Laura Aerts, 2006-10
18.	751 – Alisa Haase, 1992-96
19.	745 – Beth Pollnow, 1998-2002
20.	723 – Deb Jaryszak, 1978-82
21.	639 – Holly Skaer, 1988-91
22.	622 – Mindy Rueden, 1996-2000
23.	613 – Cathy Kaye, 2009-13
24.	598 – Amber Lisowe, 2011-14
25.	582 – Jenny Stoner, 2004-08

**2015-16 Lawrence University Basketball**  
**Lawrence University Combined Team Statistics (as of Feb 01, 2016)**  
**All games**

<b>RECORD:</b>	<b>OVERALL</b>	<b>HOME</b>	<b>AWAY</b>	<b>NEUTRAL</b>
ALL GAMES	0-18	0-8	0-9	0-1
CONFERENCE	0-13	0-6	0-7	0-0
NON-CONFERENCE	0-5	0-2	0-2	0-1

#	Player	gp-gs	min	avg	Total		3-Point		F-Throw		Rebounds				pf	dq	a	to	blk	stl	pts	avg
					fg-fga	fg%	3fg-fga	3fg%	ft-fga	ft%	off	def	tot	avg								
23	Andrea Wilkinson	18-18	565	31.4	62-175	.354	1-6	.167	25-36	.694	29	91	120	6.7	50	0	29	53	15	22	150	8.3
20	Elizabeth Arco	16-8	362	22.6	57-134	.425	0-0	.000	17-39	.436	21	52	73	4.6	63	5	27	64	32	24	131	8.2
02	Patsy Kealey	18-13	383	21.3	51-145	.352	4-12	.333	21-37	.568	45	67	112	6.2	58	3	20	56	3	28	127	7.1
24	Aubrey Scott	18-17	448	24.9	26-93	.280	8-39	.205	20-30	.667	22	38	60	3.3	21	0	13	46	1	14	80	4.4
12	Lauren Deveikis	17-0	246	14.5	22-75	.293	7-26	.269	13-19	.684	7	7	14	0.8	13	0	11	11	0	9	64	3.8
10	Olivia Hoesley	18-16	365	20.3	25-97	.258	15-67	.224	2-4	.500	4	24	28	1.6	26	0	18	25	2	9	67	3.7
15	Fanita Robins	16-2	234	14.6	11-60	.183	3-15	.200	32-51	.627	12	20	32	2.0	36	0	12	42	1	5	57	3.6
03	Natalie Kramer	18-16	431	23.9	17-70	.243	8-33	.242	18-30	.600	7	19	26	1.4	40	1	25	43	0	13	60	3.3
14	Sammi Jo Nixon	10-0	140	14.0	7-32	.219	3-18	.167	7-10	.700	0	10	10	1.0	6	0	10	14	1	2	24	2.4
05	Nicole Cummins	15-0	209	13.9	12-43	.279	7-24	.292	3-5	.600	0	12	12	0.8	13	0	17	22	1	7	34	2.3
44	Leah Reeves	18-0	217	12.1	17-40	.425	0-0	.000	5-12	.417	19	31	50	2.8	22	0	6	17	2	7	39	2.2
Team																						
Total.....		18	3600		307-964	.318	56-240	.233	163-273	.597	191	417	608	33.8	348	9	188	404	58	140	833	46.3
Opponents.....		18	3600		453-1102	.411	127-394	.322	246-365	.674	271	506	777	43.2	303	-	280	308	49	224	1279	71.1

<b>TEAM STATISTICS</b>	<b>LU</b>	<b>OPP</b>	<b>Date</b>	<b>Opponent</b>	<b>Score</b>	<b>Att.</b>
SCORING	833	1279	11/17/15	at Marian University	L 28-57	254
Points per game	46.3	71.1	* 11/21/15	at Ripon College	L 57-74	238
Scoring margin	-24.8	-	* 11/25/15	LAKE FOREST COLLEGE	L 36-60	299
FIELD GOALS-ATT	307-964	453-1102	* 12/02/15	at Beloit College	L 73-93	150
Field goal pct	.318	.411	* 12/05/15	ILLINOIS COLLEGE	L 41-56	259
3 POINT FG-ATT	56-240	127-394	12/15/15	CONCORDIA CHICAGO	L 57-68	101
3-point FG pct	.233	.322	12/18/15	at Hope College	L 43-91	701
3-pt FG made per game	3.1	7.1	12/19/15	vs Alma College	L 30-76	146
FREE THROWS-ATT	163-273	246-365	12/30/15	ST. MARY'S UNIVERSIT	L 49-73	102
Free throw pct	.597	.674	* 01/02/16	GRINNELL COLLEGE	L 37-50	112
F-Throws made per game	9.1	13.7	* 01/06/16	at St. Norbert College	L 29-85	395
REBOUNDS	608	777	* 01/09/16	MONMOUTH COLLEGE	L 49-68	476
Rebounds per game	33.8	43.2	* 01/12/16	at Carroll University	L 33-56	58
Rebounding margin	-9.4	-	* 01/16/16	at Cornell College	L 54-68	335
ASSISTS	188	280	* 01/20/16	RIPON COLLEGE	L 39-54	212
Assists per game	10.4	15.6	* 01/23/16	KNOX COLLEGE	L 66-73	452
TURNOVERS	404	308	* 01/26/16	at Lake Forest College	L 50-91	167
Turnovers per game	22.4	17.1	* 01/30/16	at Knox College	L 62-86	400
Turnover margin	-5.3	-				
Assist/turnover ratio	0.5	0.9				
STEALS	140	224				
Steals per game	7.8	12.4				
BLOCKS	58	49				
Blocks per game	3.2	2.7				
ATTENDANCE	2013	2844				
Home games-Avg/Game	8-252	9-300				
Neutral site-Avg/Game	-	1-146				

\* - Conference game

<b>Score by Periods</b>	<b>1st</b>	<b>2nd</b>	<b>3rd</b>	<b>4th</b>	<b>Totals</b>
Lawrence University	157	223	206	247	833
Opponents	341	305	320	313	1279

**2015-16 Lawrence University Basketball**  
**Lawrence University Points-Rebounds-Assists (as of Feb 01, 2016)**  
**All games**

Opponent	Date	Score		02	03	05	10	12	14	15
				KEALEY,PAT	KRAMER,NAT	CUMMINS,NI	HOESLEY,OL	DEVEIKIS,L	NIXON,SAMM	ROBINS,FAN
at Marian University	11/17/15	28-57	L	4-5-0	0-1-2	3-0-0	3-2-0	0-1-1	1-0-2	3-1-1
at Ripon College	11/21/15	57-74	L	0-1-0	6-1-4	0-0-0	11-0-2	5-0-0	0-0-0	11-3-2
LAKE FOREST COLLEGE	11/25/15	36-60	L	3-6-0	1-4-1	0-0-2	0-1-1	2-1-0	4-3-0	3-4-0
at Beloit College	12/02/15	73-93	L	4-2-1	4-2-2	0-0-0	9-2-2	7-3-0	4-1-1	4-2-0
ILLINOIS COLLEGE	12/05/15	41-56	L	5-6-2	5-3-2	2-0-0	5-2-0	0-0-0	DNP	6-6-2
CONCORDIA CHICAGO	12/15/15	57-68	L	22-11-3	2-0-0	DNP	2-1-1	2-1-1	5-5-1	2-5-2
at Hope College	12/18/15	43-91	L	5-3-1	3-2-0	DNP	10-0-1	6-0-1	3-0-3	0-1-2
vs Alma College	12/19/15	30-76	L	7-5-2	10-3-0	DNP	1-3-1	0-3-0	0-0-0	0-1-0
ST. MARY'S UNIVERSIT	12/30/15	49-73	L	0-4-1	1-1-2	9-1-3	0-2-2	4-0-0	7-1-1	10-1-0
GRINNELL COLLEGE	01/02/16	37-50	L	7-2-0	2-2-1	0-0-0	6-1-1	DNP	0-0-2	0-1-0
at St. Norbert College	01/06/16	29-85	L	6-12-1	7-0-0	3-2-2	0-2-0	1-0-1	0-0-0	0-0-0
MONMOUTH COLLEGE	01/09/16	49-68	L	15-7-1	0-1-6	0-0-0	8-2-1	0-0-1	DNP	1-0-0
at Carroll University	01/12/16	33-56	L	8-13-0	5-2-1	2-2-0	3-1-1	2-1-1	DNP	DNP
at Cornell College	01/16/16	54-68	L	2-1-0	0-0-0	8-1-3	2-3-1	14-1-0	DNP	4-1-1
RIPON COLLEGE	01/20/16	39-54	L	6-7-1	1-1-2	0-0-0	0-3-1	0-1-0	DNP	DNP
KNOX COLLEGE	01/23/16	66-73	L	21-12-3	0-1-0	3-3-3	2-1-0	11-0-2	DNP	2-2-1
at Lake Forest College	01/26/16	50-91	L	4-8-1	6-2-2	0-0-2	2-2-1	3-1-2	DNP	4-1-1
at Knox College	01/30/16	62-86	L	8-7-3	7-0-0	4-3-2	3-0-2	7-1-1	DNP	7-3-0

Opponent	Date	Score		20	23	24	44
				ARCO,ELIZA	WILKINSON,	SCOTT,AUBR	REEVES,LEA
at Marian University	11/17/15	28-57	L	0-3-0	8-11-0	2-6-0	4-7-0
at Ripon College	11/21/15	57-74	L	18-8-5	6-2-1	0-1-2	0-1-0
LAKE FOREST COLLEGE	11/25/15	36-60	L	12-3-1	8-4-1	0-2-3	3-3-1
at Beloit College	12/02/15	73-93	L	15-4-4	14-6-1	12-3-1	0-3-0
ILLINOIS COLLEGE	12/05/15	41-56	L	12-9-0	4-10-2	2-5-0	0-0-0
CONCORDIA CHICAGO	12/15/15	57-68	L	DNP	14-15-5	8-7-0	0-7-0
at Hope College	12/18/15	43-91	L	6-10-2	6-2-1	0-4-0	4-1-1
vs Alma College	12/19/15	30-76	L	0-3-1	8-8-0	0-5-1	4-5-1
ST. MARY'S UNIVERSIT	12/30/15	49-73	L	6-7-1	4-2-1	8-1-0	0-1-1
GRINNELL COLLEGE	01/02/16	37-50	L	11-5-4	8-10-0	3-3-1	0-3-0
at St. Norbert College	01/06/16	29-85	L	6-4-1	0-2-2	2-4-0	4-0-1
MONMOUTH COLLEGE	01/09/16	49-68	L	12-2-2	7-4-0	6-1-0	0-0-0
at Carroll University	01/12/16	33-56	L	DNP	4-7-5	2-5-0	7-4-0
at Cornell College	01/16/16	54-68	L	2-1-1	9-5-2	10-2-0	3-8-0
RIPON COLLEGE	01/20/16	39-54	L	8-2-0	11-5-1	13-4-3	0-0-0
KNOX COLLEGE	01/23/16	66-73	L	11-4-1	10-11-4	2-1-1	4-4-0
at Lake Forest College	01/26/16	50-91	L	8-5-2	15-6-1	6-1-0	2-1-1
at Knox College	01/30/16	62-86	L	4-3-2	14-10-2	4-5-1	4-2-0



## 2015-16 Game Recaps

**November 17**

**Marian 57, Lawrence 28**

FOND DU LAC, Wis. — The Lawrence University women's basketball team struggled out of the gate and Marian University posted a 57-28 non-conference victory in the season opener at Sadoff Gymnasium.

Marian bolted to a 25-7 lead after the first quarter, and the Sabres led 36-10 at the half.

Nicole Paulus led Marian and all scorers with 19 points, and Brittany Bauman added 11.

Andrea Wilkinson led Lawrence with eight points and pulled down a game-high 12 rebounds to go along with three steals. The Vikings hit on only 10-of-48 shots from the floor (20.8 percent), and Lawrence shot just 2-of-13 (15.4 percent) from beyond the arc.

Marian opened the second half by scoring 11 consecutive points to push the lead to 47-10 and never led by less than 27 points the rest of the way.

**November 21**

**Ripon 74, Lawrence 57**

RIPON, Wis. — The Ripon College women's basketball team pulled away in the second quarter and kept Lawrence University at bay the rest of the game in a 74-57 Midwest Conference victory at the Storzer Center.

Freshman Maggie Oimoen scored 22 points on 11-of-14 shooting to pace Ripon (2-0, 1-0 MWC).

Liz Arco came off the bench to pace Lawrence (0-2, 0-1) with 18 points, eight rebounds and five assists. Fanita Robins and Olivia Hoesley added 11 points apiece for Lawrence.

Ripon led 15-14 late in the first quarter, but the Red Hawks scored eight consecutive points. The game then see-sawed as Lawrence trimmed the lead back seven before Ripon stretched it all the way to 33-16.



Hoesley then hit a 3-pointer, Robins connected on back-to-back jumpers and Arco hit a jumper to cut the lead to 37-25 at the half.

Lawrence was unable to put a dent in Ripon's lead in the final two quarters. The Vikings never got closer than 10 points, but Ripon didn't pull away.

Lawrence cut the lead to 62-51 on Natalie Kramer's 3-pointer with 5:47 left in the fourth quarter before Ripon finally put the game away in the final minutes.

**November 25**

**Lake Forest 60, Lawrence 36**

APPLETON, Wis. — The Lake Forest College women's basketball team jumped out to a 12-0 lead and went on to a 60-36 Midwest Conference win over Lawrence University at Alexander Gymnasium.

K.C. Stralka posted a double-double with 10 points and 10 rebounds for the Foresters (1-1, 1-0 MWC). Brie Majkowski, Michelle Ricolcol and Brittany Avonts had eight points apiece for Lake Forest.

Liz Arco scored a game-high 12 points to pace Lawrence (0-3, 0-2), and Andrea Wilkinson added eight points.

The Foresters kept Lawrence off the board until Sammi Jo Nixon's 3-pointer with 3:41 left in the opening quarter trimmed the margin to 12-3. Lake Forest would go on to lead 15-7 after the opening 10 minutes.

The Vikings got a layup from Arco and a 3-pointer from Patsy Kealey to cut the lead to 15-12 with 8:40 left in the second quarter. Lake Forest finished the first half on a 10-2 run and pushed the lead to 25-14 at the half.

The Foresters pushed the lead to 20 points late in the third quarter and would go on to lead by as many as 26 points in the final period.



**December 2**

**Beloit 93, Lawrence 73**

BELOIT, Wis. — Lana Wieseman and Nora Polaski combined to score 57 points to lead the Beloit College women's basketball team to a 93-73 Midwest Conference win over Lawrence University at Flood Arena.

Wieseman scored 35 points and grabbed 12 rebounds and Polaski added 22 points to lead Beloit (3-3, 2-1 MWC). Wieseman hit 12-of-19 shots from the floor, and Polaski was a perfect 10-for-10.

Liz Arco paced Lawrence (0-4, 0-3) with 15 points and a team-high four assists. Andrea Wilkinson added 14 points and a team-best six rebounds for the Vikings. Aubrey Scott chipped in with a career-high 12 points as she hit 5-of-7 shots from the floor, including 2-of-2 from 3-point range.

Lawrence led 15-10 in the first quarter, but Beloit outscored the Vikings 14-6 over the final four minutes to grab a 24-21 lead after one quarter.

A 9-0 run by the Bucs helped them take control in the second quarter and push the lead to 44-32. Beloit led 48-38 at the half.

The Vikings never got closer than 10 points in the third quarter, but the Bucs couldn't put Lawrence away. Scott's jumper cut Beloit's advantage to 68-55 after three quarters.

Lawrence trimmed the margin back to 10 points twice, the first on Scott's 3-pointer and the second on Wilkinson's jumper to make it 70-60. Beloit responded with a 15-0 run to push the lead to 85-60 and seal the victory.

**December 5**

**Illinois College 56, Lawrence 41**

APPLETON, Wis. — The Illinois College women's basketball team pulled away from Lawrence University in



## 2015-16 Game Recaps

the final quarter and posted a 56-41 Midwest Conference victory at Alexander Gymnasium.

Brielle Greenleaf led Illinois College (4-2, 2-0 MWC) with 11 points, and Melissa Solorio and Jill Friedrich added 10 points apiece. Solorio completed a double-double with 10 rebounds.

Liz Arco paced Lawrence (0-5, 0-4) with 12 points, and she picked up nine rebounds. Andrea Wilkinson led the Vikings with 10 rebounds.

Illinois College took control of the game late in the second quarter and early in the third. The Lady Blues held Lawrence scoreless for a stretch of 9:32 that finally ended when Olivia Hoesley hit a 3-pointer with 5:43 left in the third quarter to cut the lead to 32-23.

Illinois College would push its lead back to as many as 14 in the third quarter, but a pair of free throws from Fanita Robins and a jumper from Patsy Kealey trimmed the margin back to 40-30 heading to the fourth.

The Lady Blues scored the first three points of the fourth quarter, but Robins answered with a 3-pointer to cut the lead back to 43-33 with 8:58 left in the game.

Illinois College then scored six of the game's next seven points to build a 49-34 advantage. Lawrence never got closer than 13 points after that.

The Vikings fell behind 9-2 to start the game, but Lawrence battled back to cut the margin to 12-11 after the first quarter.

Lawrence took its first lead at 13-12 on Arco's jumper to start the second quarter. The Vikings later went on a 7-0 run, capped by Kealey's jumper with 5:15 left in the opening half, to grab a 20-18 edge. Illinois College then held Lawrence scoreless for the rest of the first half and led 28-20 at the break.

### December 15

#### Concordia Chicago 68, Lawrence 57

APPLETON, Wis.

— The Concordia University Chicago women's basketball team scored six consecutive points in a stretch of 38 seconds in the final minutes and went on to pull out a 68-57 non-conference win over Lawrence University at Alexander Gymnasium.

Lauren Orr paced Concordia (3-3) with 18 points, and Courtney Lofink added 12 points and five assists for the Cougars.

Patsy Kealey and Andrea Wilkinson both posted double-doubles for the Vikings (0-6), who were playing without top scorer Liz Arco.

Kealey finished with a game-high 22 points on 10-for-12 shooting from the floor to go with 11 rebounds. Wilkinson had 14 points and a game-high 15 rebounds to go with five assists, three blocks and two steals. Aubrey Scott added eight points and seven rebounds for the Vikings.

Lawrence battled back from a six-point halftime deficit in the third quarter to lead by five points in the period. The Vikings opened the period with an 8-1 run, capped by back-to-back layups from freshman Sammi Jo Nixon, to take a 28-27 lead with 6:42 left in the quarter.

The Vikings were up one when a layup from Kealey and free throws from Wilkinson and Kealey gave Lawrence a 43-38 edge with 31 seconds left. Orr hit a jumper to cut the lead to 43-40 after three quarters.

The teams traded the lead in the fourth quarter, but the Vikings were up 52-51 after Kealey's jumper with 4:36 remaining. Taylor Jacobsen hit a 3-pointer for the Cougars, and Sheyla Kahalehoe followed with a layup to give Concordia a 56-52 edge.

Kealey hit another jumper to trim the margin to 56-54, but the Cougars then put on the decisive spurt. Orr hit a 3-pointer and Erin Jacobsen scored



the next three points to stretch the margin to 62-54 with 1:53 left. The Cougars then hit five of their next six free throws to seal the victory.

Turnovers and missed free throws really hurt the Vikings. Against the Cougars' pressing defense, Lawrence turned the ball over a season-high 35 times. Concordia was whistled for 26 fouls, but the Vikings were unable to take advantage of that. Lawrence went just 16-of-35 from the foul line.

### December 18

#### No. 4 Hope 91, Lawrence 43

HOLLAND, Mich.

— The fourth-ranked Hope College women's basketball team jumped out to a huge early lead and cruised to a 91-43 non-conference win over Lawrence University at the Post Exam Jam Tournament.

The Flying Dutch (7-0) rolled to a 31-4 lead after the first quarter and had expanded that advantage to 51-15 at the half. Hope would go on to lead by as many as 56 points in the final quarter.

Maura McAfee led six Hope players in double figures with 16 points. Francesca Buchanan posted a double-double for the Dutch with 12 points and 11 rebounds.

Olivia Hoesley led Lawrence (0-7) with 10 points. Liz Arco added six points, pulled down a team-high 10 rebounds and piled up six blocks.

### December 19

#### Alma 76, Lawrence 30

HOLLAND, Mich.

— The Lawrence University women's basketball team shot just 20 percent from the floor and fell 76-30 to Alma College in a non-conference game at the Post Exam Jam.

The Vikings hit just 11-of-53 shots (20.8 percent) from the floor, including 3-of-17 (17.6 percent) from be-



## 2015-16 Game Recaps

yond the arc.

Kassidy Blough led Alma (3-5) with 17 points, and Raeanna Zink came off the bench to post a double-double with 15 points and 10 rebounds.

Natalie Kramer paced Lawrence (0-8) with 10 points, and Andrea Wilkinson added eight points and a team-high eight rebounds.

Lawrence, which committed 32 turnovers, got off to an incredibly slow start for the second straight night. Alma jumped out to a 20-2 lead after the first quarter, and the Scots would go on to lead 45-13 at the half.

The Scots would lead by as many as 48 points in the fourth quarter.

### December 30

#### St. Mary's (Minn.) 73, Lawrence 49

APPLETON, Wis. — A big third quarter led the St. Mary's (Minn.) University women's basketball team to a 73-49 non-conference victory over Lawrence University at Alexander Gymnasium.



Haley Trom came off the bench to lead the Cardinals (9-1) with 15 points, and Micaela Meredith posted a double-double of 13 points and 11 rebounds.

Lawrence's Fanita Robins came off the bench to record her second double-figure scoring game of the season with 10 points. Nicole Cummins added nine points for the Vikings (0-9) as she went 3-for-3 from 3-point range. Liz Arco picked up six points, seven rebounds, three blocks and two steals for Lawrence.

St. Mary's led 31-20 at the half, and the Cardinals were up 12 when they went on a run midway through the third period. St. Mary's got back-to-back 3-pointers from Alexa Huisman as part of an 11-0 run to take a 46-22 lead.

The Cardinals later connected on four of five shots in one stretch to push their lead to 58-30. St. Mary's,

which outscored Lawrence 27-12 in the third period, would lead 58-32 after three.

Lawrence never got closer than 20 points in the fourth quarter.

The Cardinals got off to a fast start and led 19-6 after the first quarter, but Lawrence battled back in the second. The Vikings went on a 12-3 run to start the quarter as Cummins hit back-to-back 3-pointers, and Arco, Aubrey Scott and Sammi Jo Nixon all picked up baskets during that stretch.

Lawrence trimmed the lead to 22-18 after a Cummins 3-pointer, but the Cardinals responded with seven consecutive points and would lead 31-20 at the half.

### January 2

#### Grinnell 50, Lawrence 37

APPLETON, Wis. — The Grinnell College women's basketball team held off a stubborn Lawrence University squad to post a 50-37 Midwest Conference victory at Alexander Gymnasium.



Sophia Gatton led three Grinnell players in double figures with 14 points. Kayla Morrissey added 13 points and Anne Boldt had 11 for the Pioneers (6-5, 3-3 MWC).

Liz Arco paced Lawrence (0-10, 0-5) with 11 points. She also added five rebounds, five blocks, four assists and four steals. Andrea Wilkinson pulled down a game-high 10 rebounds for Lawrence to go along with eight points.

Grinnell scored the game's first seven points and seemed to maintain that advantage throughout but had trouble putting away the Vikings.

Lawrence's Olivia Hoesley hit a 3-pointer to trim Grinnell's lead to 14-8 after the first quarter. The Vikings cut the lead to four twice early in the second quarter on baskets by Aubrey Scott and Arco, but Grinnell finally pushed the lead to 29-18 in the final minute of the period.

Grinnell started to pull away by scoring the first seven points of the third quarter, capped by Boldt's 3-pointer, for a 36-20 lead. The Vikings responded as Wilkinson and Arco picked up two baskets apiece to cut the margin back to 39-28 late in the third.

The Pioneers finally sealed the win by scoring six consecutive points midway through the fourth quarter to grab a 47-30 lead. Lawrence didn't get closer than 13 points the rest of the way.

### January 6

#### St. Norbert 85, Lawrence 29

DE PERE, Wis. — Five St. Norbert College women's basketball players scored in double figures as the Green Knights topped Lawrence 85-29 in a Midwest Conference game at Schuldes Sports Center.



Jill Kleiman finished with 13 points to lead the Green Knights (8-4, 7-0 MWC) and all scorers. Brianna Byrne added 12 points and Regan Carmichael and Stephanie Wiegman had 11 points apiece.

Natalie Kramer led Lawrence (0-11, 0-7) with seven points, and Liz Arco and Patsy Kealey had six points apiece. Kealey also pulled down a game-high 12 rebounds.

After St. Norbert scored the game's first eight points, the Vikings bounced right back. Lawrence went on a 9-2 run, capped by Kramer's 3-pointer, to cut the lead to 10-9 with 2:28 left in the opening period. St. Norbert would go on to lead 15-11 after one quarter.

The Green Knights then blew the game open in the second quarter by outscoring the Vikings 27-6 and pushed the lead to 42-17 at the half.

St. Norbert continued to pull away and would lead by as many as 58 points.



## 2015-16 Game Recaps

**January 9**

**Monmouth 68, Lawrence 49**

APPLETON, Wis. — The Monmouth College women's basket-



ball team used a huge fourth quarter to pull away and post a 68-49 Midwest Conference win over Lawrence University at Alexander Gymnasium.

Monmouth led by seven points entering the fourth quarter when the Scots exploded for 23 points and rolled to the 19-point win.

Tia Robertson came off the bench for Monmouth (2-11, 1-7 MWC) to record a double-double with 26 points and 10 rebounds. Robertson went 10-for-13 from the floor and was 6-for-6 from the foul line. Katie Houston also had a double-double for the Scots with 14 points and a game-high 12 rebounds, and Keri Dodson finished with 12 points.

Patsy Kealey came off the bench to lead the Vikings (0-12, 0-7) with 15 points, seven rebounds and four steals. Liz Arco added 12 points for Lawrence.

The big trio of Dodson, Robertson and Houston did most of the damage for the Scots in the second half. Dodson scored 10 of her 12 points after the break, Robertson picked up nine points and Houston had seven.

Monmouth really beat the Vikings up at the foul line, especially in the second half. The Scots hit 15-of-18 free throws in the second half and finished 21-of-28 from the line for the game. Lawrence attempted half as many free throws and went 10-for-14 for the game.

After enjoying a solid first half shooting the ball, Lawrence went cold in the second half. The Vikings went 8-for-28 (28.6 percent) from the floor in the second half and that included 0-for-6 from 3-point range.

Lawrence came out strong and built a 10-2 lead after Andrea Wilkinson's jumper with 5:45 left in the first quarter. The Scots finished the first

quarter on a 12-2 run and led 14-12 after one period. Monmouth would lead by as many as eight points in the second quarter, but Lawrence managed to trim the margin to 32-26 at the half.

**January 12**

**Carroll 56, Lawrence 33**

WAUKESHA, Wis.

— The Carroll University women's basketball team steadily pulled away and posted a 56-33 Midwest Conference win over Lawrence University at Van Male Field House.

Brittany Groer paced Carroll with a double-double of 24 points and 12 rebounds. Malory Christenson added 14 points for the Pioneers (5-8, 4-4 MWC).

Patsy Kealey paced Lawrence (0-13, 0-8) with eight points and a game-high 13 rebounds. Freshman Leah Reeves added seven points, and Andrea Wilkinson had a team-best five assists for the Vikings.

Carroll scored eight of the final nine points in the first quarter and led 15-6 after the opening period. Lawrence closed to within eight points on Nicole Cummins' layup with 6:52 left in the second quarter, but the Pioneers finished the half on a 12-2 run and led 32-14 at the break.

The Pioneers inched out to a 43-22 lead after three quarters and would lead by as many as 28 points in the fourth.

**January 16**

**Cornell 68, Lawrence 54**

MOUNT VERNON, Iowa

— The Cornell College women's basketball team grabbed a big early lead and went on to a 68-54 Midwest Conference victory over Lawrence University at the Multi-Sport Center.

Diamond Boyd posted a double-double with 20 points and 13



rebounds to pace Cornell (10-4, 7-2 MWC).

Lauren Deveikis came off the bench to lead Lawrence (0-14, 0-9) with 14 points in just 17 minutes of action. Aubrey Scott added 10 points and Leah Reeves grabbed eight rebounds for the Vikings.

Cornell went on a 21-2 run over the final 7:16 of the first quarter and bolted to a 28-7 lead after the first quarter.

The Vikings fought back in the second period with some help from Deveikis. Lawrence trailed 38-17 but went on a 10-1 run, with Deveikis scoring five in that stretch, to cut the margin to 39-27 with 1:48 left in the quarter.

Lawrence got to 41-30 after a Deveikis 3-pointer, but Cornell then made four consecutive free throws to lead 45-30 at the half. The Rams were 17-for-19 from the foul line in the first half and went 22-for-25 for the game.

Cornell jumped on the Vikings in the third quarter and limited Lawrence to just four points in the period. Cornell led 61-34 entering the fourth quarter, but Lawrence chipped away at the lead in the final period to close to within 14.

**January 20**

**Ripon 54, Lawrence 39**

APPLETON, Wis.

— The Ripon College women's basketball team pulled



away in the second half and posted a 54-39 Midwest Conference win over Lawrence University at Alexander Gymnasium.

Jonalee Elliott scored 10 points, and Maggie Oimoen added nine to pace the Red Hawks (10-6, 6-5 MWC).

Aubrey Scott scored 13 points, grabbed four rebounds, picked up three assists and added three steals to lead Lawrence (0-15, 0-10). Andrea Wilkinson added 11 points, and Liz Arco came off the bench and chipped in with eight points.

## 2015-16 Game Recaps

Lawrence trailed by as many as 11 points in the second quarter but went on a 9-2 run over the final 3:00 of the first half to trim the margin to 22-18 at the break. Arco scored six points in that stretch and Scott added a three-point play.

Ripon opened the second half by outscoring Lawrence 11-5 over the first 7:29 of the third quarter to stretch the lead to 33-23. The Vikings trailed by nine after three periods and couldn't get any closer in the fourth quarter.

### January 23

#### Knox 73, Lawrence 66

APPLETON, Wis. — The Knox College women's basketball team blew out to a big early lead but had to hang on for a 73-66 Midwest Conference win over Lawrence University at Alexander Gymnasium.

Patsy Kealey led Lawrence with a double-double of 21 points and 12 rebounds as four Vikings scored in double figures. Andrea Wilkinson also had a double-double for the Vikings with 10 points and 11 rebounds.

Liz Arco and Lauren Deveikis added 11 points apiece for Lawrence, and Arco picked up four blocks.

Jamie Blue also had a double-double for Knox (9-6, 4-6 MWC) with 20 points and 11 rebounds, and Naja Woods added 17 points.

Knox scored the first 16 points of the game and led 24-10 after the first quarter. The Vikings were still down by 15 when they stormed back in the final eight minutes of the second quarter.

Lawrence (0-16, 0-11) went on a 16-4 run to trim the margin to 35-32 with 1:32 left before the half. Arco scored the first six points of the run, and Kealey scored six points during that stretch. Knox would lead 39-34 at the half.

The Vikings trimmed the lead 41-

40 on Deveikis' jumper early in the third quarter, but Knox scored the game's next nine points to stretch the lead back to 50-40. Lawrence finished the third quarter on a 12-5 run, capped by Leah Reeves' layup, to cut the margin to 55-52 after three.

Knox pushed the lead back to eight at 64-56, but the Vikings scored the next eight points, capped by Deveikis' 3-pointer, to tie the game at 64-64 with 2:59 left. Knox then scored the next six points to stretch the lead to 70-64, and the Vikings got no closer than four points after that.

### January 26

#### Lake Forest 91, Lawrence 50

LAKE FOREST, Ill. — The Lake Forest College women's basketball team rode a hot shooting night to a 91-50 Midwest Conference win over Lawrence University.

The Foresters shot 50.8 percent from the floor and connected on 14-of-26 shot (53.8 percent) from beyond the arc.

Tiffany Stiewe came off the bench to lead Lake Forest (9-7, 8-4 MWC) with 21 points as she went 7-for-8 from the floor, including 5-for-5 from 3-point range.

Andrea Wilkinson paced Lawrence (0-17, 0-12) with 15 points and she added six rebounds. Liz Arco added eight points, five rebounds, three steals and two assists for the Vikings.

Lake Forest jumped out to a 20-8 lead after the first quarter, but the Vikings did manage to cut that advantage to eight at 23-15 midway through the second. The Foresters then hit four 3-pointers in the final 3:18 of the second quarter to stretch the lead back to 37-22 at the half.

The Foresters steadily pulled away in the second half and went on to lead by as many as 43 points.

### January 30

#### Knox 86, Lawrence 62

GALESBURG, Ill. — The Knox College women's basketball team got off to a quick start in each half and rode that to an 86-62 Midwest Conference victory over Lawrence University.

Jamie Blue and Hailey Leinart scored 16 points apiece to pace Knox (10-7, 5-7 MWC).

Andrea Wilkinson posted a double-double with a team-high 14 points and game-high 10 rebounds for the Vikings (0-18, 0-13).

In what has become an all-too-familiar storyline for the Vikings, Lawrence fell behind by double digits early. Knox led by 10 points just six minutes into the game and had a 23-10 advantage after the first quarter.

The Vikings were down by 16 when they battled back in the second quarter. Lawrence got four points from Natalie Kramer and a 3-pointer from Nicole Cummins as part of 9-2 run that cut the lead to 30-21.

Knox then countered by outscoring the Vikings 9-3 over the final 1:42 of the second quarter to lead 41-26 at halftime. The Prairie Fire then put the game away as it went on a 21-6 run over the final 4:30 of the third quarter for a 71-41 lead.

Lawrence never got closer than the final margin of 24 points the rest of the way.

