



**Lawrence University (2-15, 0-12 MWC)
at Cornell College (13-4, 11-1 MWC),**

Tuesday, Jan. 31, 5:30 p.m.

vs. Beloit College (4-13, 2-10 MWC)

Saturday, Feb. 4, 1 p.m.



2016-17 LAWRENCE SCHEDULE

Date	Opponent	Time/Res.
11/15	at Maranatha Baptist W, 61-51	
11/17	Marian	W, 51-48
12/2	at Illinois College	L, 96-42
12/3	at Knox	L, 72-35
12/7	at St. Norbert	L, 71-32
12/10	Grinnell	L, 65-44
12/17	vs. Widener	L, 71-52
	(at St. Petersburg, Fla.)	
12/18	vs. Randolph	L, 72-52
	(at St. Petersburg, Fla.)	
12/29	at St. Mary's (Minn.)	L, 72-51
1/2	Knox	L, 75-57
1/7	at Monmouth	L, 72-57
1/13	Cornell	L, 80-41
1/14	Illinois College	L, 83-44
1/18	Lake Forest	L, 61-39
1/21	at Beloit	L, 73-39
1/25	St. Norbert	L, 70-37
1/28	at Grinnell	L, 74-51
1/31	at Cornell	5:30 pm
2/4	Beloit	2:00 pm
2/8	at Ripon	5:30 pm
2/11	Monmouth	1:00 pm
2/14	Ripon	5:30 pm
2/18	at Lake Forest	1:00 pm
2/24-25	MWC Tournament	TBA

Home games in bold

PROBABLE STARTERS

Lawrence



Forward	Shonell Benjamin	Fr.	5-9
Forward	Aubrey Scott	Sr.	5-10
Guard	Olivia Hoesley	Jr.	5-8
Guard	Nicole Cummins	Jr.	5-5
Guard	Natalie Kramer	Jr.	5-7

Cornell



Forward	Tal Neilly	Jr.	5-8
Forward	Madie Rinehart	Sr.	6-0
Forward	Diamond Boyd	Sr.	5-10
Guard	Sierra Bisso	Sr.	5-4
Guard	Haley Grana	Jr.	5-2

Beloit



Forward	Jaylan Dunn	Jr.	6-0
Forward	Nora Polaski	Sr.	5-11
Guard	Lauren Glaser	Fr.	5-3
Guard	Kelsey Horvath	Sr.	5-4
Guard	Shelby Kline	So.	5-6

SCHEDULE

►The Vikings hit the road for another trip to Iowa, Lawrence's second in three days, to face Cornell at 5:30 p.m. on Tuesday in Mount Vernon. Lawrence then returns to Alexander Gymnasium to host Beloit at 2 p.m. on Saturday.

VIDEO WEBCAST

►All Lawrence home games are webcast at: <https://portal.stretchinternet.com/lawrence/>. Dick Knapinski and Anthony Totoraitis are on the call for Lawrence home games. A link for the webcast is available on the Lawrence women's basketball page.

THE COACHES

►Ashley Wellman (Alma 2008) is in her fourth season at Lawrence and has a

record of 6-80 (.070).

►Brent Brase (Cornell 1990) is in his 11th season at Cornell and has a record of 147-144 (.505). Brase also spent 11 seasons as a men's head coach and has a combined record of 293-275 (.516).

►Gloria Bradley (Seton Hall 1984) is in her first season at Beloit and has a record of 4-13 (.235). She is in her 19th season overall and has a mark of 244-254 (.490).

THE SERIES

►Cornell has a slim 8-7 advantage over the Vikings in a series that was first played in the 1988-89 season. The Rams have a seven-game win streak



Ashley Wellman

in the series.

►In a series that started in the 1977-78 season, Beloit holds a 37-28 advantage. The Bucs have won the last 17 meetings.

LAST GAME

Lawrence got off to a frigid start on Saturday, and that allowed Grinnell to pull away to a 74-51 Midwest Conference victory at Darby Gymnasium.

Lawrence went 1-for-18 from the floor in the opening quarter as the Pioneers build a 16-3 lead after the first 10 minutes. The Vikings warmed up a bit in the second period, but Grinnell stretched the lead to 39-17 at the half.

The Vikings shot just 14.3 percent from the floor in the first half.

Olivia Hoesley just missed a double-double for the Vikings as she scored a career-high 20 points to go with nine rebounds.

Aubrey Scott added 16 points and eight rebounds for Lawrence, and Natalie Kramer chipped in 12 points, five rebounds and three assists.

Kayla Morrissey went 7-for-11 from the floor on her way to 17 points for Grinnell.

The Vikings trailed by as many as 32 points early in the third quarter as Grinnell opened the second half on a 10-0 run. Lawrence managed to trim the lead to 20 with seven minutes remaining in the game but could pull no closer.

VIKINGS UPDATE

►The Vikings are hoping to get leading scorer Leah Reeves (Lisle, Ill./Lisle) back from injury this week. Reeves has missed the last two games and played sparingly in the game before that. She is averaging 10 points and 5.8 rebounds per contest this season.



►Junior guard Olivia Hoesley (Eau Claire, Wis./North) scored a career-high 20 points this past Saturday against Grinnell. Hoesley topped

MWC Standings

	MWC		Overall	
	W	L	W	L
Cornell	11	1	13	4
St. Norbert	10	2	13	4
Ripon	9	3	11	6
Knox	8	4	11	6
Illinois College	7	5	10	7
Grinnell	7	5	9	8
Lake Forest	4	8	5	12
Beloit	2	10	4	13
Monmouth	2	10	2	15
Lawrence	0	12	2	15

Games Tuesday
 Lawrence at Cornell
 Knox at Illinois College
 Lake Forest at Beloit
 Monmouth at Grinnell
 Ripon at St. Norbert

Games Saturday
 Beloit at Lawrence
 St. Norbert at Monmouth
 Grinnell at Illinois College
 Knox at Cornell
 Lake Forest at Ripon

her previous high of 19 points set earlier this season in a win against Marian. Hoesley is now averaging 8.5 points and 5.1 rebounds per game.



Olivia Hoesley

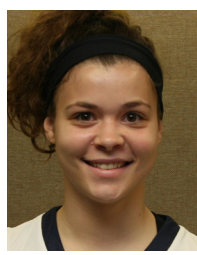
►Senior Aubrey Scott (Appleton, Wis./East) and Hoesley are the team's top 3-point shooters. Scott has made 16 shots from beyond the arc and is shooting a team-high 28.6 percent on 3-pointers. Hoesley has knocked



Aubrey Scott

down 13 3-pointers this season.

►Junior guard Natalie Kramer (Mendota Heights, Minn./Sibley) has put together back-to-back double figure scoring games. Kramer, who had scored in double digits just once this season, scored a season-high 13 points against St. Norbert and followed that with 12 points at Grinnell. She is averaging 5.8 points, 2.9 rebounds and 1.9 assists per game.



Natalie Kramer

►Rookie forward Shonell Benjamin (Brooklyn, N.Y./Latin School) has been starting in Reeves' place the last two games and has averaged 4.0 points and 4.5 rebounds in those contests. She leads the team in rebounding and ranks fifth in the conference at 7.2 per game.

►The Vikings rank ninth in the Midwest Conference in scoring defense at 70.9 points per game. The Vikings are 10th in scoring at 46.2 points per game.

►Lawrence is eighth in the league in field goal percentage defense at 40.2 percent. Lawrence is hitting 29.5 percent of its shots from the floor, and that ranks 10th in the conference.

►The Vikings are fifth in the Midwest Conference in defending the 3-point-er at 28.1 percent. Lawrence is 10th in the conference in 3-point shooting at 21.4 percent.

SCOUTING CORNELL

►Cornell saw its seven-game win streak snapped with a 68-45 loss to second-place St. Norbert this past Saturday. First-place Cornell is now just one game ahead of the Green Knights in the Midwest Conference standings with six games left to play.



►Senior forward Diamond Boyd ranks third in the Midwest Conference in scoring at 14.5 points per game, and Sierra Bisso is fifth at 13.4.

►Boyd is close to averaging a double-double and leads the conference in rebounding at 9.4 per game.

►Bisso has made a team-high 45 3-pointers this season while shooting 34.9 percent from beyond the arc. Anne Visser is shooting a team-high 37.7 percent from 3-point range.

►Cornell is fourth in the Midwest Conference in scoring at 64 points per game, and the Rams are second in scoring defense at 52.9.

►The Rams are shooting 38.4 percent from the floor, and that ranks fifth in the conference. Cornell is fourth in field goal percentage defense at 35.3 percent.

►Cornell is third in the league in 3-point shooting at 32.8 percent. The Rams are fourth in defending the 3-pointer at 27.9 percent.

SCOUTING BELOIT

►Beloit has won two of its last three following a 64-37 victory over visiting Monmouth this past Saturday. Jaylan Dunn scored a game-high 21 points for the Bucs and pulled down eight rebounds.

►Laura Panicali is Beloit's leading scorer at 11.2 points per game, but she hasn't played in the last five contests.

►Nora Polaski is second on the team in scoring at 10 points per game while shooting 47.1 percent from the floor. Polaski is pulling down a team-best five rebounds per game.

►Shelby Kline is the team's best 3-point shooter at 31.2 percent. She has made 24 3-pointers this season, and the rest of the team has combined to make 29.

Lawrence University Basketball Facts

Location	Appleton, Wis.
Founded	1847
Enrollment	1,500
President	Mark Burstein
Affiliation	NCAA Division III
Conference	Midwest Conference
Nickname	Vikings
School Colors	Blue and White
Home Arena	Alexander Gymnasium (1929, capacity 1,100)
Director of Athletics	Christyn Abaray
First season of basketball	1975-76
Seasons of basketball	39
All-time record	357-522 (.406)
Midwest Conference titles	2
1989-90, 1998-99	
Lake Michigan Conference titles	1
1988-89	
NCAA tournament appearances	1
1999	

►Beloit ranks sixth in the Midwest Conference in scoring defense at 58.6 points per game. The Bucs are ninth in scoring at 53.6.

►Beloit is shooting 40.1 percent from the floor, good for fourth in the league. The Bucs are ninth in field goal percentage defense at 40.3 percent.

►The Bucs are shooting 27.5 percent from beyond the arc, and that ranks seventh in the conference. The Bucs are sixth in defending the 3-pointer at 30 percent.

CAREER SCORING LEADERS

- 1,487 – Claire Getzoff, 2002-06
- 1,225 – Sarah O'Neil, 1988-92
- 1,186 – Felice Porrata, 2001-05
- 1,105 – Jackie Huss, 1993-97
- 975 – Katherine Lofgren, 1989-93
- 965 – Krista Tomter, 1989-93
- 956 – Kelly Mulcahy, 2004-08
- 942 – Gina Seegers, 1988-92
- 909 – Alex Deshler, 2010-14
- 895 – Molly Lieberman, 1993-97
- 868 – Carrie Van Groll, 2004-08
- 866 – Dara Rakun, 1998-2002
- 833 – Robin Chapman, 1979-83
- 830 – Vicki Corbeil, 1976-79
- 828 – Tracie Spangenberg, 1986-90
- 808 – Joy Rogatzki, 1996-2000
- 799 – Laura Aerts, 2006-10
- 751 – Alisa Haase, 1992-96
- 745 – Beth Pollnow, 1998-2002
- 723 – Deb Jaryszak, 1978-82
- 639 – Holly Skaer, 1988-91
- 622 – Mindy Rueden, 1996-2000
- 613 – Cathy Kaye, 2009-13
- 598 – Amber Lisowe, 2011-14
- 582 – Jenny Stoner, 2004-08

2016-17 Lawrence University Basketball
Lawrence University Combined Team Statistics (as of Jan 30, 2017)
All games

RECORD:	OVERALL	HOME	AWAY	NEUTRAL
ALL GAMES	2-15	1-6	1-7	0-2
CONFERENCE	0-12	0-6	0-6	0-0
NON-CONFERENCE	2-3	1-0	1-1	0-2

#	Player	gp-gs	min	avg	Total		3-Point		F-Throw		Rebounds				pf	dq	a	to	blk	stl	pts	avg
					fg-fga	fg%	3fg-fga	3fg%	ft-fga	ft%	off	def	tot	avg								
32	Leah Reeves	15-14	429	28.6	62-155	.400	1-2	.500	25-42	.595	33	54	87	5.8	29	1	14	28	8	11	150	10.0
10	Olivia Hoesley	17-17	540	31.8	59-175	.337	13-72	.181	14-21	.667	19	67	86	5.1	36	0	23	49	2	15	145	8.5
12	Aubrey Scott	17-11	426	25.1	36-129	.279	16-56	.286	35-45	.778	14	62	76	4.5	14	0	15	43	0	14	123	7.2
03	Natalie Kramer	17-17	505	29.7	29-133	.218	7-43	.163	33-49	.673	15	35	50	2.9	39	0	32	38	2	16	98	5.8
25	Grace Minogue	11-6	243	22.1	26-75	.347	6-23	.261	4-5	.800	12	15	27	2.5	16	0	15	24	3	7	62	5.6
21	Lauren Deveikis	13-6	307	23.6	21-91	.231	7-31	.226	9-15	.600	12	18	30	2.3	23	0	18	21	0	8	58	4.5
05	Nicole Cummins	17-9	427	25.1	25-113	.221	6-35	.171	17-27	.630	3	23	26	1.5	37	0	36	49	1	18	73	4.3
15	Shonell Benjamin	17-5	394	23.2	26-84	.310	0-0	.000	21-41	.512	37	85	122	7.2	55	2	22	48	6	20	73	4.3
14	Liesl Hostetter	16-0	120	7.5	1-6	.167	0-0	.000	1-2	.500	4	10	14	0.9	15	0	1	12	1	2	3	0.2
02	Maria Poimenidou	6-0	9	1.5	0-4	.000	0-0	.000	0-0	.000	1	1	2	0.3	4	0	0	2	0	0	0	0.0
Team											32	52	84				8					
Total.....		17	3400		285-965	.295	56-262	.214	159-247	.644	182	422	604	35.5	268	3	176	322	23	111	785	46.2
Opponents.....		17	3400		465-1157	.402	104-370	.281	172-270	.637	298	536	834	49.1	260	-	300	244	66	196	1206	70.9

TEAM STATISTICS	LU	OPP	Date	Opponent	Score	Att.
SCORING	785	1206	11/15/16	at Maranatha Baptist	w 61-51	205
Points per game	46.2	70.9	11/17/16	MARIAN UNIVERSITY	w 51-48	251
Scoring margin	-24.8	-	* 12/02/16	at Illinois College	L 42-96	395
FIELD GOALS-ATT	285-965	465-1157	* 12/03/16	at Knox College	L 35-72	125
Field goal pct	.295	.402	* 12/07/16	at St. Norbert College	L 32-71	271
3 POINT FG-ATT	56-262	104-370	* 12/10/16	GRINNELL COLLEGE	L 44-65	221
3-point FG pct	.214	.281	12/17/16	vs Widener	L 52-71	81
3-pt FG made per game	3.3	6.1	12/18/16	vs Randolph	L 52-72	46
FREE THROWS-ATT	159-247	172-270	12/29/16	at Saint Mary's	L 51-72	117
Free throw pct	.644	.637	* 01/02/17	KNOX COLLEGE	L 57-75	112
F-Throws made per game	9.4	10.1	* 01/07/17	at Monmouth College	L 57-72	100
REBOUNDS	604	834	* 01/13/17	CORNELL COLLEGE	L 41-80	256
Rebounds per game	35.5	49.1	* 01/14/17	ILLINOIS COLLEGE	L 44-83	341
Rebounding margin	-13.5	-	* 01/18/17	LAKE FOREST COLLEGE	L 39-61	321
ASSISTS	176	300	* 01/21/17	at Beloit College	L 39-73	250
Assists per game	10.4	17.6	* 01/25/17	ST. NORBERT COLLEGE	L 37-70	303
TURNOVERS	322	244	* 01/28/17	at Grinnell College	L 51-74	416
Turnovers per game	18.9	14.4				
Turnover margin	-4.6	-				
Assist/turnover ratio	0.5	1.2				
STEALS	111	196				
Steals per game	6.5	11.5				
BLOCKS	23	66				
Blocks per game	1.4	3.9				
ATTENDANCE	1805	2006				
Home games-Avg/Game	7-258	8-235				
Neutral site-Avg/Game	-	2-64				

* = Conference game

Score by Periods	1st	2nd	3rd	4th	Totals
Lawrence University	197	180	207	201	785
Opponents	301	333	284	288	1206

2016-17 Lawrence University Basketball
Lawrence University Points-Rebounds-Assists (as of Jan 30, 2017)
All games

Opponent	Date	Score		02	03	05	10	12	14	15
				POIMENIDOU	KRAMER,NAT	CUMMINS,NI	HOESLEY,OL	SCOTT,AUBR	HOSTETTER,	BENJAMIN,S
at Maranatha Baptist	11/15/16	61-51	w	DNP	7-4-1	15-1-1	8-4-1	11-5-0	0-0-0	6-4-5
MARIAN UNIVERSITY	11/17/16	51-48	w	DNP	0-3-1	5-2-4	19-6-1	6-3-0	0-0-0	0-7-3
at Illinois College	12/02/16	42-96	L	DNP	8-5-1	3-1-0	7-2-2	5-3-2	0-0-0	2-5-1
at Knox College	12/03/16	35-72	L	DNP	10-9-2	2-0-2	3-1-1	3-2-0	0-1-0	0-10-1
at St. Norbert College	12/07/16	32-71	L	0-0-0	4-4-0	6-1-5	8-5-0	2-4-0	0-2-0	4-2-0
GRINNELL COLLEGE	12/10/16	44-65	L	0-0-0	5-0-2	4-1-4	0-5-0	6-4-0	0-0-0	15-10-1
vs Widener	12/17/16	52-71	L	0-0-0	7-0-6	0-1-4	16-7-1	3-3-1	0-2-0	0-14-2
vs Randolph	12/18/16	52-72	L	DNP	6-6-0	8-1-3	7-6-2	17-3-0	0-1-0	0-8-0
at Saint Mary's	12/29/16	51-72	L	DNP	5-2-3	3-4-3	7-4-2	8-2-4	0-1-0	2-4-0
KNOX COLLEGE	01/02/17	57-75	L	DNP	4-2-3	5-2-3	10-9-3	12-6-2	0-1-0	4-10-2
at Monmouth College	01/07/17	57-72	L	DNP	2-1-3	0-1-0	13-5-2	8-7-0	DNP	7-5-0
CORNELL COLLEGE	01/13/17	41-80	L	0-2-0	5-3-1	6-2-0	5-6-1	7-6-0	0-2-0	8-10-2
ILLINOIS COLLEGE	01/14/17	44-83	L	0-0-0	1-1-4	4-1-2	11-4-1	5-8-2	1-2-1	5-6-1
LAKE FOREST COLLEGE	01/18/17	39-61	L	DNP	3-4-2	2-4-0	2-3-2	2-4-4	0-0-0	4-7-0
at Beloit College	01/21/17	39-73	L	0-0-0	6-1-0	6-2-0	3-5-1	6-3-0	2-2-0	8-11-1
ST. NORBERT COLLEGE	01/25/17	37-70	L	DNP	13-0-0	4-1-3	6-5-1	6-5-0	0-0-0	6-4-1
at Grinnell College	01/28/17	51-74	L	DNP	12-5-3	0-1-2	20-9-2	16-8-0	0-0-0	2-5-2

Opponent	Date	Score		21	25	32
				DEVEIKIS,L	MINOGUE,GR	REEVES,LEA
at Maranatha Baptist	11/15/16	61-51	w	4-3-2	8-1-0	2-7-1
MARIAN UNIVERSITY	11/17/16	51-48	w	5-2-1	7-5-5	9-8-0
at Illinois College	12/02/16	42-96	L	4-2-0	6-4-1	7-1-1
at Knox College	12/03/16	35-72	L	0-0-1	9-3-0	8-9-1
at St. Norbert College	12/07/16	32-71	L	DNP	2-3-1	6-6-0
GRINNELL COLLEGE	12/10/16	44-65	L	0-4-0	6-2-0	8-4-1
vs Widener	12/17/16	52-71	L	DNP	2-1-0	24-3-2
vs Randolph	12/18/16	52-72	L	DNP	7-0-2	7-7-2
at Saint Mary's	12/29/16	51-72	L	DNP	7-3-3	19-7-0
KNOX COLLEGE	01/02/17	57-75	L	7-0-2	4-2-1	11-7-1
at Monmouth College	01/07/17	57-72	L	9-3-4	4-3-2	14-7-1
CORNELL COLLEGE	01/13/17	41-80	L	4-3-4	DNP	6-6-2
ILLINOIS COLLEGE	01/14/17	44-83	L	5-0-0	DNP	12-7-1
LAKE FOREST COLLEGE	01/18/17	39-61	L	11-3-1	DNP	15-8-1
at Beloit College	01/21/17	39-73	L	6-1-1	DNP	2-0-0
ST. NORBERT COLLEGE	01/25/17	37-70	L	2-5-1	DNP	DNP
at Grinnell College	01/28/17	51-74	L	1-4-1	DNP	DNP