



**Lawrence University (2-19, 0-16 MWC)
vs. Ripon College (15-6, 13-3 MWC),
Tuesday, Feb. 14, 5:30 p.m.
at Lake Forest College (5-16, 4-12 MWC)**



Saturday, Feb. 18, 1 p.m.

2016-17 LAWRENCE SCHEDULE

Date	Opponent	Time/Res.
11/15	at Maranatha Baptist W, 61-51	
11/17	Marian	W, 51-48
12/2	at Illinois College	L, 96-42
12/3	at Knox	L, 72-35
12/7	at St. Norbert	L, 71-32
12/10	Grinnell	L, 65-44
12/17	vs. Widener	L, 71-52
	(at St. Petersburg, Fla.)	
12/18	vs. Randolph	L, 72-52
	(at St. Petersburg, Fla.)	
12/29	at St. Mary's (Minn.)	L, 72-51
1/2	Knox	L, 75-57
1/7	at Monmouth	L, 72-57
1/13	Cornell	L, 80-41
1/14	Illinois College	L, 83-44
1/18	Lake Forest	L, 61-39
1/21	at Beloit	L, 73-39
1/25	St. Norbert	L, 70-37
1/28	at Grinnell	L, 74-51
1/31	at Cornell	L, 72-49
2/4	Beloit	L, 64-40
2/8	at Ripon	L, 83-30
2/11	Monmouth	L, 72-39
2/14	Ripon	5:30 pm
2/18	at Lake Forest	1:00 pm
2/24-25	MWC Tournament	TBA

Home games in bold

PROBABLE STARTERS

Lawrence



Forward	Shonell Benjamin	Fr.	5-9
Guard	Lauren Deveikis	Jr.	5-4
Guard	Olivia Hoesley	Jr.	5-8
Guard	Nicole Cummins	Jr.	5-5
Guard	Natalie Kramer	Jr.	5-7

Ripon



Forward	Nicole Herkert	Sr.	5-10
Forward	Maggie Oimoen	So.	6-2
Guard	Megan Jensen	Sr.	5-5
Guard	Emma McDonald	Jr.	5-10
Guard	Maddie Koster	Sr.	5-7

Lake Forest



Forward	Brittany Avonts	Sr.	6-0
Forward	Brie Majkowski	Sr.	5-10
Guard	Tara Gloystein	Sr.	5-9
Guard	Bridget Bilek	So.	5-9
Guard	Kara Norvet	Jr.	5-8

SCHEDULE

►The Vikings wrap up the home schedule on Tuesday by facing Ripon in a 5:30 p.m. game at Alexander Gymnasium. Lawrence finishes the regular season on Saturday when the Vikings travel to Lake Forest for a 1 p.m. game at the Sports and Recreation Center.

VIDEO WEBCAST

►All Lawrence home games are webcast at: <https://portal.stretchinternet.com/lawrence/>. Dick Knapinski is on the call for Lawrence home games. A link for the webcast is available on the Lawrence women's basketball page.

THE COACHES

►Ashley Wellman (Alma 2008) is in her fourth season at Lawrence and has a record of 6-84 (.067).

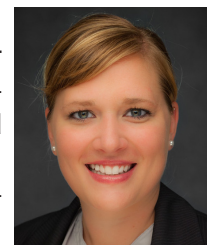
►Lauren Johnson (Clarke 2008) is in her fourth season at Ripon and has a record of 41-50 (.451).

►Tamlyn Tills (UW-La Crosse 1982) is in her ninth season at Lake Forest and has a record of 99-108 (.478). She is in her 22nd season overall and has a record of 235-315 (.427).

THE SERIES

►Ripon has a 54-28 advantage in a series that started in 1975-76, the first season of Lawrence basketball. The Red Hawks have won 19 straight against Lawrence.

►Lake Forest holds a 50-13 advantage over Lawrence in a series that dates



Ashley Wellman

to the 1975-76 season. The Foresters have won 19 straight in the series.

LAST GAME

Monmouth hit 12 3-pointers this past Saturday en route to a 72-39 Midwest Conference victory over Lawrence at Alexander Gymnasium.

The Scots went 12-for-24 from beyond the arc and were led by rookie Yvonne Ornelas. She went 9-for-10 from the floor, including 5-for-6 on 3-pointers, on her way to a game-high 23 points.

Leah Reeves came off the bench to pace Lawrence with 11 points, and she pulled down six rebounds. Natalie Kramer added 10 points for the Vikings, and Shonell Benjamin grabbed seven rebounds.

The Scots were hot from the start, hitting their first four shots from the floor and making their first four 3-pointers. Monmouth had built an 18-5 lead just six minutes into the game.

Lawrence got four consecutive points from Reeves and a pair of free throws from Kramer to trim the margin to 18-11 after one quarter. The Scots stretched the lead to 17 before Lauren Deveikis hit a 3-pointer in the final seconds to cut the lead to 35-21 at the half.

Monmouth started the second half on a 16-6 run to pull away to a 51-27 edge. Lawrence never got closer than 21 points after that.

VIKINGS UPDATE

▶The Vikings will try to close the season out on a good note despite limping, literally, to the finish line. Injuries have depleted the short-handed Vikings, who had two regular starters slowed by injury come off the bench this past Saturday against Monmouth. Junior Aubrey Scott (Appleton, Wis./East) and sophomore Leah Reeves (Lisle, Ill./Lisle) played four and 24 minutes, respectively.



▶Reeves had her best game since re-



MWC Standings

	MWC		Overall	
	W	L	W	L
Cornell*	15	1	17	4
St. Norbert*	13	3	16	5
Ripon*	13	3	15	6
Knox	10	6	13	8
Grinnell	10	6	12	9
Illinois College	8	8	11	10
Beloit	4	12	6	15
Lake Forest	4	12	5	16
Monmouth	3	13	3	18
Lawrence	0	16	2	19

*Denotes qualified for MWC Tournament

Games Tuesday

Ripon at Lawrence
 Monmouth at Illinois College
 Lake Forest at St. Norbert
 Cornell at Beloit
 Grinnell at Knox

Games Saturday

Lawrence at Lake Forest
 Ripon at Knox
 Beloit at St. Norbert
 Cornell at Monmouth
 Illinois College at Grinnell

turning from an injury three games ago. She scored 11 points and grabbed six rebounds against Monmouth. Reeves leads the team at 9.1 points per game while shooting 37.8 percent from the floor. She also is pulling down 5.3 rebounds per game.

▶Junior guard Natalie Kramer (Mendota Heights, Minn./Sibley) continued her strong play in recent weeks with 10 points against Monmouth. Kramer has now scored in double figures in four of the last six games. She



Natalie Kramer

has improved to 6.2 points per game on the season.

has improved to 6.2 points per game on the season.

▶Rookie forward Shonell Benjamin (Brooklyn, N.Y./Latin School) ranks sixth in the Midwest Conference and leads the team at 7.1 rebounds per game. Benjamin is averaging 4.4 points per game.

▶Junior guard Nicole Cummins (San Antonio, Texas/Marshall) leads the Vikings at 2.1 assists per game, and Kramer is at 1.8 per contest. Cummins also is tops on the team at 1.3 steals per contest.

▶One issue for the Vikings a season ago was too many turnovers. Lawrence has made a big improvement on that this season and the Vikings are committing three fewer turnovers per game.

▶The Vikings are 10th in the Midwest Conference in scoring defense at 71.3 points per game. The Vikings are 10th in scoring at 44.9 points per game.

▶Lawrence is ninth in the league in field goal percentage defense at 41 percent. Lawrence is hitting 29.2 percent of its shots from the floor, and that ranks 10th in the conference.

▶The Vikings are fourth in the Midwest Conference in defending the 3-pointer at 28.7 percent. Lawrence is 10th in the conference in 3-point shooting at 21.9 percent.

SCOUTING RIPON

▶Ripon clinched a berth in the Midwest Conference Tournament last week and will be either the second or third seed. The Red Hawks will almost certainly play St. Norbert in the MWC Tournament semifinals.



▶Ripon ran its win streak to seven games with an 83-63 victory at Illinois College this past Saturday.

►Sophomore Maggie Oimoen was named the Midwest Conference Player of the Week for the third time this season after averaging a double-double of 15.5 points and 10 rebounds last week. Oimoen ranks fourth in the conference in scoring at 14.1 points per game. She is third in the league in rebounding at 7.5 per contest.

►Guards Emma McDonald and Megan Jensen are Ripon's top 3-point shooters. McDonald has hit a team-best 32 3-pointers while shooting 38.6 percent from beyond the arc. Jensen has made 31 3-pointers and is shooting a team-best 41.3 on 3-pointers.

►Ripon is averaging 64.9 points per game, good for third in the conference. The Red Hawks are fourth in scoring defense at 55.3.

►Ripon leads the league in shooting at 43.1 percent. The Red Hawks are second in field goal percentage defense at 33.7 percent.

►Ripon also leads the conference in 3-point shooting at 35.6 percent. Ripon is seventh in defending the 3-pointer at 30.1 percent.

SCOUTING LAKE FOREST

►The Foresters dropped their sixth consecutive game with a 67-41 setback to Cornell this past Saturday. Lake Forest travels to St. Norbert on Tuesday before facing the Vikings on Saturday to wrap up the season.

►Bridget Bilek leads Lake Forest in scoring at 11.7 points per game and is the lone Forester averaging in double figures. Bilek also is the top 3-point shooter on the team and has drained 24 shots from beyond the arc.

►Forward Brittany Avonts leads the Foresters and ranks eighth in the conference in rebounding at 6.6 per game. She's averaging 3.0 points per



Lawrence University Basketball Facts

Location	Appleton, Wis.
Founded	1847
Enrollment	1,500
President	Mark Burstein
Affiliation	NCAA Division III
Conference	Midwest Conference
Nickname	Vikings
School Colors	Blue and White
Home Arena	Alexander Gymnasium (1929, capacity 1,100)
Director of Athletics	Christyn Abaray
First season of basketball	1975-76
Seasons of basketball	39
All-time record	357-526 (.404)
Midwest Conference titles	2
1989-90, 1998-99	
Lake Michigan Conference titles	1
1988-89	
NCAA tournament appearances	1
1999	

contest.

►Lake Forest ranks ninth in the Midwest Conference in scoring at 52.8 points per game. The Foresters are sixth in scoring defense at 58.4 points per game.

►The Foresters are ninth in field goal percentage at 32.7 percent. Lake Forest ranks third in field goal percentage defense at 34.9 percent.

►Lake Forest is ninth in the league in 3-point shooting at 25 percent, and the Foresters are second in defending the 3-pointer at 25.7 percent.

CAREER SCORING LEADERS

1. 1,487 – Claire Getzoff, 2002-06
2. 1,225 – Sarah O'Neil, 1988-92
3. 1,186 – Felice Porrata, 2001-05
4. 1,105 – Jackie Huss, 1993-97
5. 975 – Katherine Lofgren, 1989-93
6. 965 – Krista Tomter, 1989-93
7. 956 – Kelly Mulcahy, 2004-08
8. 942 – Gina Seegers, 1988-92
9. 909 – Alex Deshler, 2010-14
10. 895 – Molly Lieberman, 1993-97
11. 868 – Carrie Van Groll, 2004-08
12. 866 – Dara Rakun, 1998-2002
13. 833 – Robin Chapman, 1979-83
14. 830 – Vicki Corbeil, 1976-79
15. 828 – Tracie Spangenberg, 1986-90
16. 808 – Joy Rogatzki, 1996-2000
17. 799 – Laura Aerts, 2006-10
18. 751 – Alisa Haase, 1992-96
19. 745 – Beth Pollnow, 1998-2002
20. 723 – Deb Jaryszak, 1978-82
21. 639 – Holly Skaer, 1988-91
22. 622 – Mindy Rueden, 1996-2000
23. 613 – Cathy Kaye, 2009-13
24. 598 – Amber Lisowe, 2011-14
25. 582 – Jenny Stoner, 2004-08

2016-17 Lawrence University Basketball
Lawrence University Combined Team Statistics (as of Feb 13, 2017)
All games

RECORD:	OVERALL	HOME	AWAY	NEUTRAL
ALL GAMES	2-19	1-8	1-9	0-2
CONFERENCE	0-16	0-8	0-8	0-0
NON-CONFERENCE	2-3	1-0	1-1	0-2

#	Player	gp-gs	min	avg	Total		3-Point		F-Throw		Rebounds				pf	dq	a	to	blk	stl	pts	avg
					fg-fga	fg%	3fg-fga	3fg%	ft-fga	ft%	off	def	tot	avg								
32	Leah Reeves	18-15	487	27.1	68-180	.378	1-4	.250	26-44	.591	37	58	95	5.3	36	1	14	31	8	11	163	9.1
10	Olivia Hoesley	21-21	668	31.8	72-210	.343	18-86	.209	17-26	.654	27	85	112	5.3	42	0	23	60	2	16	179	8.5
12	Aubrey Scott	19-12	434	22.8	36-131	.275	16-57	.281	35-45	.778	14	62	76	4.0	14	0	15	47	0	14	123	6.5
03	Natalie Kramer	21-21	641	30.5	38-171	.222	10-60	.167	45-69	.652	19	42	61	2.9	45	0	38	50	2	22	131	6.2
25	Grace Minogue	11-6	243	22.1	26-75	.347	6-23	.261	4-5	.800	12	15	27	2.5	16	0	15	24	3	7	62	5.6
21	Lauren Deveikis	17-9	426	25.1	33-130	.254	10-46	.217	11-19	.579	18	23	41	2.4	31	0	23	29	0	12	87	5.1
05	Nicole Cummins	21-12	573	27.3	36-158	.228	10-48	.208	19-30	.633	3	33	36	1.7	43	0	45	63	1	27	101	4.8
15	Shonell Benjamin	21-9	521	24.8	34-110	.309	0-0	.000	24-49	.490	47	103	150	7.1	67	2	30	60	7	25	92	4.4
14	Liesl Hostetter	20-0	180	9.0	1-7	.143	0-0	.000	3-4	.750	5	14	19	1.0	19	0	2	17	1	2	5	0.3
02	Maria Poimenidou	10-0	27	2.7	0-5	.000	0-0	.000	0-0	.000	1	2	3	0.3	12	0	0	3	0	0	0	0.0
Team											37	66	103				9					
Total.....		21	4200		344-1177	.292	71-324	.219	184-291	.632	220	503	723	34.4	325	3	205	393	24	136	943	44.9
Opponents.....		21	4200		577-1407	.410	133-464	.287	210-322	.652	355	652	1007	48.0	313	-	382	289	81	246	1497	71.3

TEAM STATISTICS	LU	OPP	Date	Opponent	Score	Att.
SCORING	943	1497	11/15/16	at Maranatha Baptist	w 61-51	205
Points per game	44.9	71.3	11/17/16	MARIAN UNIVERSITY	w 51-48	251
Scoring margin	-26.4	-	* 12/02/16	at Illinois College	L 42-96	395
FIELD GOALS-ATT	344-1177	577-1407	* 12/03/16	at Knox College	L 35-72	125
Field goal pct	.292	.410	* 12/07/16	at St. Norbert College	L 32-71	271
3 POINT FG-ATT	71-324	133-464	* 12/10/16	GRINNELL COLLEGE	L 44-65	221
3-point FG pct	.219	.287	12/17/16	vs Widener	L 52-71	81
3-pt FG made per game	3.4	6.3	12/18/16	vs Randolph	L 52-72	46
FREE THROWS-ATT	184-291	210-322	12/29/16	at Saint Mary's	L 51-72	117
Free throw pct	.632	.652	* 01/02/17	KNOX COLLEGE	L 57-75	112
F-Throws made per game	8.8	10.0	* 01/07/17	at Monmouth College	L 57-72	100
REBOUNDS	723	1007	* 01/13/17	CORNELL COLLEGE	L 41-80	256
Rebounds per game	34.4	48.0	* 01/14/17	ILLINOIS COLLEGE	L 44-83	341
Rebounding margin	-13.5	-	* 01/18/17	LAKE FOREST COLLEGE	L 39-61	321
ASSISTS	205	382	* 01/21/17	at Beloit College	L 39-73	250
Assists per game	9.8	18.2	* 01/25/17	ST. NORBERT COLLEGE	L 37-70	303
TURNOVERS	393	289	* 01/28/17	at Grinnell College	L 51-74	416
Turnovers per game	18.7	13.8	* 01/31/17	at Cornell College	L 49-72	190
Turnover margin	-5.0	-	* 02/04/17	BELOIT COLLEGE	L 40-64	583
Assist/turnover ratio	0.5	1.3	* 02/08/17	at Ripon College	L 30-83	256
STEALS	136	246	* 02/11/17	MONMOUTH COLLEGE	L 39-72	732
Steals per game	6.5	11.7				
BLOCKS	24	81				
Blocks per game	1.1	3.9				
ATTENDANCE	3120	2452				
Home games-Avg/Game	9-347	10-232				
Neutral site-Avg/Game	-	2-64				

* = Conference game

Score by Periods	1st	2nd	3rd	4th	Totals
Lawrence University	231	218	243	251	943
Opponents	367	411	370	349	1497

2016-17 Lawrence University Basketball
Lawrence University Points-Rebounds-Assists (as of Feb 13, 2017)
All games

Opponent	Date	Score		02	03	05	10	12	14	15
				POIMENIDOU	KRAMER,NAT	CUMMINS,NI	HOESLEY,OL	SCOTT,AUBR	HOSTETTER,	BENJAMIN,S
at Maranatha Baptist	11/15/16	61-51	w	DNP	7-4-1	15-1-1	8-4-1	11-5-0	0-0-0	6-4-5
MARIAN UNIVERSITY	11/17/16	51-48	w	DNP	0-3-1	5-2-4	19-6-1	6-3-0	0-0-0	0-7-3
at Illinois College	12/02/16	42-96	L	DNP	8-5-1	3-1-0	7-2-2	5-3-2	0-0-0	2-5-1
at Knox College	12/03/16	35-72	L	DNP	10-9-2	2-0-2	3-1-1	3-2-0	0-1-0	0-10-1
at St. Norbert College	12/07/16	32-71	L	0-0-0	4-4-0	6-1-5	8-5-0	2-4-0	0-2-0	4-2-0
GRINNELL COLLEGE	12/10/16	44-65	L	0-0-0	5-0-2	4-1-4	0-5-0	6-4-0	0-0-0	15-10-1
vs Widener	12/17/16	52-71	L	0-0-0	7-0-6	0-1-4	16-7-1	3-3-1	0-2-0	0-14-2
vs Randolph	12/18/16	52-72	L	DNP	6-6-0	8-1-3	7-6-2	17-3-0	0-1-0	0-8-0
at Saint Mary's	12/29/16	51-72	L	DNP	5-2-3	3-4-3	7-4-2	8-2-4	0-1-0	2-4-0
KNOX COLLEGE	01/02/17	57-75	L	DNP	4-2-3	5-2-3	10-9-3	12-6-2	0-1-0	4-10-2
at Monmouth College	01/07/17	57-72	L	DNP	2-1-3	0-1-0	13-5-2	8-7-0	DNP	7-5-0
CORNELL COLLEGE	01/13/17	41-80	L	0-2-0	5-3-1	6-2-0	5-6-1	7-6-0	0-2-0	8-10-2
ILLINOIS COLLEGE	01/14/17	44-83	L	0-0-0	1-1-4	4-1-2	11-4-1	5-8-2	1-2-1	5-6-1
LAKE FOREST COLLEGE	01/18/17	39-61	L	DNP	3-4-2	2-4-0	2-3-2	2-4-4	0-0-0	4-7-0
at Beloit College	01/21/17	39-73	L	0-0-0	6-1-0	6-2-0	3-5-1	6-3-0	2-2-0	8-11-1
ST. NORBERT COLLEGE	01/25/17	37-70	L	DNP	13-0-0	4-1-3	6-5-1	6-5-0	0-0-0	6-4-1
at Grinnell College	01/28/17	51-74	L	DNP	12-5-3	0-1-2	20-9-2	16-8-0	0-0-0	2-5-2
at Cornell College	01/31/17	49-72	L	0-0-0	6-3-2	11-2-2	12-7-0	0-0-0	0-3-0	9-10-4
BELOIT COLLEGE	02/04/17	40-64	L	0-0-0	13-2-1	5-2-3	7-7-0	DNP	2-1-1	4-7-2
at Ripon College	02/08/17	30-83	L	0-1-0	4-3-3	6-1-0	15-6-0	DNP	0-0-0	2-4-0
MONMOUTH COLLEGE	02/11/17	39-72	L	0-0-0	10-3-0	6-5-4	0-6-0	0-0-0	0-1-0	4-7-2

Opponent	Date	Score		21	25	32
				DEVEIKIS,L	MINOGUE,GR	REEVES,LEA
at Maranatha Baptist	11/15/16	61-51	w	4-3-2	8-1-0	2-7-1
MARIAN UNIVERSITY	11/17/16	51-48	w	5-2-1	7-5-5	9-8-0
at Illinois College	12/02/16	42-96	L	4-2-0	6-4-1	7-1-1
at Knox College	12/03/16	35-72	L	0-0-1	9-3-0	8-9-1
at St. Norbert College	12/07/16	32-71	L	DNP	2-3-1	6-6-0
GRINNELL COLLEGE	12/10/16	44-65	L	0-4-0	6-2-0	8-4-1
vs Widener	12/17/16	52-71	L	DNP	2-1-0	24-3-2
vs Randolph	12/18/16	52-72	L	DNP	7-0-2	7-7-2
at Saint Mary's	12/29/16	51-72	L	DNP	7-3-3	19-7-0
KNOX COLLEGE	01/02/17	57-75	L	7-0-2	4-2-1	11-7-1
at Monmouth College	01/07/17	57-72	L	9-3-4	4-3-2	14-7-1
CORNELL COLLEGE	01/13/17	41-80	L	4-3-4	DNP	6-6-2
ILLINOIS COLLEGE	01/14/17	44-83	L	5-0-0	DNP	12-7-1
LAKE FOREST COLLEGE	01/18/17	39-61	L	11-3-1	DNP	15-8-1
at Beloit College	01/21/17	39-73	L	6-1-1	DNP	2-0-0
ST. NORBERT COLLEGE	01/25/17	37-70	L	2-5-1	DNP	DNP
at Grinnell College	01/28/17	51-74	L	1-4-1	DNP	DNP
at Cornell College	01/31/17	49-72	L	11-3-3	DNP	DNP
BELOIT COLLEGE	02/04/17	40-64	L	7-5-1	DNP	2-0-0
at Ripon College	02/08/17	30-83	L	3-1-1	DNP	0-2-0
MONMOUTH COLLEGE	02/11/17	39-72	L	8-2-0	DNP	11-6-0