



Lawrence University (2-2, 0-2 MWC) at St. Norbert College (2-3, 1-1 MWC)

Wednesday, Dec. 7, 2016

vs. Grinnell College (4-2, 2-0 MWC)

Saturday, Dec. 10, 2016



2016-17 LAWRENCE SCHEDULE

Date	Opponent	Time/Res.
11/15	at Maranatha Baptist W, 61-51	
11/17	Marian	W, 51-48
12/2	at Illinois College	L, 96-42
12/3	at Knox	L, 72-35
12/7	at St. Norbert	5:30 pm
12/10	Grinnell	1:00 pm
12/17	vs. Widener	2:00 pm
	(at St. Petersburg, Fla.)	
12/18	vs. Randolph	Noon
	(at St. Petersburg, Fla.)	
12/29	at St. Mary's (Minn.)	5:00 pm
1/2	Knox	1:00 pm
1/7	at Monmouth	1:00 pm
1/13	Cornell	5:30 pm
1/14	Illinois College	1:00 pm
1/18	Lake Forest	5:30 pm
1/21	at Beloit	1:00 pm
1/25	St. Norbert	5:30 pm
1/28	at Grinnell	1:00 pm
1/31	at Cornell	5:30 pm
2/4	Beloit	2:00 pm
2/8	at Ripon	5:30 pm
2/11	Monmouth	1:00 pm
2/14	Ripon	5:30 pm
2/18	at Lake Forest	1:00 pm
2/24-25	MWC Tournament	TBA

Home games in bold



PROBABLE STARTERS

Lawrence

Forward	Leah Reeves	So.	6-0
Guard	Grace Minogue	Fr.	5-7
Guard	Olivia Hoesley	Jr.	5-8
Guard	Nicole Cummins	Jr.	5-5
Guard	Natalie Kramer	Jr.	5-7



St. Norbert

Forward	Jelena Ostojic	Fr.	6-1
Forward	Brianna Byrne	Sr.	5-10
Center	Mallory Nickerson	Sr.	6-1
Guard	Regan Carmichael	Sr.	5-8
Guard	Jill Kleiman	Sr.	5-6



Grinnell

Forward	Kayla Morrissey	Jr.	5-10
Guard	Sophia Gatton	Sr.	5-6
Forward	Alex Neckopulos	Sr.	5-9
Guard	Kaitlyn Norton	Sr.	5-9
Guard	Lydia Stariha	Sr.	5-7

SCHEDULE

►The Vikings travel north on Highway 41 on Wednesday to face St. Norbert in a home game for the Green Knights at the Kress Events Center at UW-Green Bay. Tip-off is set for 5:30 p.m.
►Lawrence returns to Alexander Gymnasium on Saturday for a 1 p.m. game against Grinnell.

VIDEO WEBCAST

►Both games this weekend will be webcast and are available at: <https://portal.stretchinternet.com/lawrence/>. Dick Knapinski and Anthony Totoraitis are on the call for Lawrence home games. A link for the webcast is available on the Lawrence women's basketball page.

THE COACHES

►Ashley Wellman (Alma 2008) is in her third season at Lawrence and has a record of 6-67 (.082).

►Connie Tilley (UW-La Crosse 1974) is in her 40th season at St. Norbert and has a record of 654-289 (.694).

►Dana Harrold (Dubuque 2004) is in her fourth season at Grinnell and has a record of 32-44 (.421).

THE SERIES

►St. Norbert holds a 70-13 lead in a series that dates back to 1975-76, the first season of Lawrence basketball. The Green Knights have won the last 22 meetings with the Vikings.



Ashley Wellman

►Grinnell holds an 18-17 lead in a series that was first contested in the 1989-90 season. The Pioneers have won the last 14 meetings.

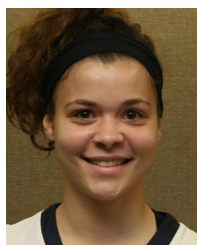
LAST GAME

A slow start combined with frigid shooting Saturday doomed Lawrence in a 72-35 Midwest Conference loss to Knox at Memorial Gymnasium.

Knox jumped out to a 12-point lead after the first quarter, and Lawrence shot just 21.7 percent from the floor for the game. The Vikings hit just 3-of-20 shots (15 percent) from beyond the arc.

Kyra Huffman led Knox with 18 points and she grabbed nine rebounds. Karlie Thorn added 11 points for the Prairie Fire, and Hailey Leinart had 10.

Natalie Kramer paced Lawrence with 10 points. Grace Minogue added nine points, and Leah Reeves had eight points to go with a team-best nine rebounds.



Natalie Kramer

Lawrence actually led 5-4 after Minogue's 3-pointer with 7:33 left in the first quarter, but that's when Knox took over. The Prairie Fire went on a 15-2 run to end the period and led 19-7 after one.

Knox expanded its lead to 43-23 at the half but couldn't pull away in the third quarter. The Vikings went ice cold in the fourth quarter, hitting just 1-of-14 shots from the floor while being held to three points as Knox stretched the advantage.

VIKINGS UPDATE

►The Vikings went ice cold from the floor during their two Midwest Conference road games last weekend. Lawrence shot just 22.7 percent (25-110) from the floor, including 23.3 percent (7-30) on 3-pointers in losses at Illinois College and Knox.



MWC Standings

	MWC		Overall	
	W	L	W	L
Illinois College	3	0	4	2
Cornell	2	0	4	2
Grinnell	2	0	4	2
Ripon	1	1	3	3
Knox	1	1	2	3
St. Norbert	1	1	2	3
Lake Forest	1	2	2	4
Monmouth	1	2	1	4
Lawrence	0	2	2	2
Beloit	0	3	2	4

Games Wednesday

Lawrence at St. Norbert
Lake Forest at Illinois College
Ripon at Beloit

Monmouth at Knox
Cornell at Grinnell

Games Saturday

Grinnell at Lawrence
Knox at Ripon
St. Norbert at Cornell

►Junior guard Olivia Hoesley (Eau Claire, Wis./North) leads a balanced attack for the Vikings. Hoesley is averaging 9.3 points per game and is shooting 40.5 percent from the floor.

►The Vikings have six players averaging at least 6.3 points per game.

►Sophomore forward Leah Reeves (Lisle, Ill./Lisle) is tops on the team at 6.3 rebounds per game to go along with 6.5 points per contest. Reeves also has a team-best four blocks on the season.



Leah Reeves

►Rookie guard Shonell Benjamin (Brooklyn, N.Y./Latin School) is handing out a team-high 2.5 assists per game. Junior guard Nicole Cummins (San Antonio, Texas/John Marshall) tops on the team at 1.8 steals per contest.

►The Vikings rank eighth in the Midwest Conference in scoring defense at 66.8 points per game. The Vikings are 10th in scoring at 47.3 points per game.

►Lawrence is fifth in the league in field goal percentage defense at 37.4 percent. Lawrence is 10th in the league in shooting at 28.4 percent.

►The Vikings lead the Midwest Conference in defending the 3-pointer at 25.3 percent. Lawrence is ninth in the conference in 3-point shooting at 23.3 percent.

SCOUTING ST. NORBERT

►St. Norbert split its Midwest Conference road games this past weekend. The Green Knights started the trip with a 66-42 win at Knox on Friday but then fell 76-69 at Illinois College on Saturday.



►The loss to Illinois College snapped St. Norbert's 30-game win streak against Midwest Conference opponents.

►Senior guard Regan Carmichael leads the Green Knights in scoring at 12.4 points per game. Senior guard Brianna Byrne is at 10.6 points and a team-best 5.4 rebounds per game. Byrne is just 33 points shy of topping 1,000 points for her career.

St. Norbert is scoring 70.3 points per game, good for second in the Midwest Conference. The Green Knights are fourth in the league in scoring defense at 55.7 points per game.

►St. Norbert is shooting 42.2 percent from the floor, which ranks second in the conference. The Green Knights are second in field goal percentage defense at 34.4 percent.

►St. Norbert is tops in the conference in 3-point shooting at 38 percent. Opponents are shooting 27.1 percent from beyond the arc and that ranks third in the league.

SCOUTING GRINNELL

►Grinnell got off to a 2-0 start in Midwest Conference play with a sweep last weekend. The Pioneers opened the weekend with a 51-36 victory over visiting Beloit and then topped visiting Lake Forest 54-37.



►Forward Kayla Morrisey is leading the Pioneers in both scoring and rebounding. Morrisey is averaging 16.8 points per game while shooting 39 percent from the floor. Morrisey is grabbing 7.7 rebounds per contest.

►The Pioneers are averaging 53.8 points per game and that ranks eighth in the Midwest Conference. Grinnell is stingy on defense and is allowing just 54 points per game, good for second in the league.

►Grinnell is shooting 31.7 percent from the floor and that ranks ninth in the conference. Grinnell is seventh in field goal percentage defense at 38.6 percent.

►The Pioneers are shooting 27.5 percent from 3-point range, and that ranks sixth in the conference. Sophia Gatton is tops on the team with nine 3-pointers while shooting 39.1 percent from 3-point range. Grinnell ranks fourth in the league in defending the 3-pointer at 28.4 percent.

Lawrence University Basketball Facts

Location	Appleton, Wis.
Founded	1847
Enrollment	1,500
President	Mark Burstein
Affiliation	NCAA Division III
Conference	Midwest Conference
Nickname	Vikings
School Colors	Blue and White
Home Arena	Alexander Gymnasium (1929, capacity 1,100)
Director of Athletics	Christyn Abaray
First season of basketball	1975-76
Seasons of basketball	39
All-time record	357-509 (.412)
Midwest Conference titles	2
1989-90, 1998-99	
Lake Michigan Conference titles	1
1988-89	
NCAA tournament appearances	1
1999	

CAREER SCORING LEADERS

1. 1,487 – Claire Getzoff, 2002-06
2. 1,225 – Sarah O'Neil, 1988-92
3. 1,186 – Felice Porrata, 2001-05
4. 1,105 – Jackie Huss, 1993-97
5. 975 – Katherine Lofgren, 1989-93
6. 965 – Krista Tomter, 1989-93
7. 956 – Kelly Mulcahy, 2004-08
8. 942 – Gina Seegers, 1988-92
9. 909 – Alex Deshler, 2010-14
10. 895 – Molly Lieberman, 1993-97
11. 868 – Carrie Van Groll, 2004-08
12. 866 – Dara Rakun, 1998-2002
13. 833 – Robin Chapman, 1979-83
14. 830 – Vicki Corbeil, 1976-79
15. 828 – Tracie Spangenberg, 1986-90
16. 808 – Joy Rogatzki, 1996-2000
17. 799 – Laura Aerts, 2006-10
18. 751 – Alisa Haase, 1992-96
19. 745 – Beth Pollnow, 1998-2002
20. 723 – Deb Jaryszak, 1978-82
21. 639 – Holly Skaer, 1988-91
22. 622 – Mindy Rueden, 1996-2000
23. 613 – Cathy Kaye, 2009-13
24. 598 – Amber Lisowe, 2011-14
25. 582 – Jenny Stoner, 2004-08

2016-17 Lawrence University Basketball
Lawrence University Combined Team Statistics (as of Dec 06, 2016)
All games

RECORD:	OVERALL	HOME	AWAY	NEUTRAL
ALL GAMES	2-2	1-0	1-2	0-0
CONFERENCE	0-2	0-0	0-2	0-0
NON-CONFERENCE	2-0	1-0	1-0	0-0

#	Player	gp-gs	min	avg	Total		3-Point		F-Throw		Rebounds								a	to	blk	stl	pts	avg
					fg-fga	fg%	3fg-fga	3fg%	ft-fa	ft%	off	def	tot	avg	pf	dq								
10	Olivia Hoesley	4-4	121	30.3	15-37	.405	3-17	.176	4-4	1.000	4	9	13	3.3	7	0	5	11	0	4	37	9.3		
25	Grace Minogue	4-3	110	27.5	12-39	.308	4-13	.308	2-3	.667	4	9	13	3.3	7	0	6	15	2	6	30	7.5		
32	Leah Reeves	4-4	111	27.8	10-31	.323	0-0	.000	6-10	.600	11	14	25	6.3	11	0	3	3	4	5	26	6.5		
03	Natalie Kramer	4-4	108	27.0	8-42	.190	0-4	.000	9-17	.529	8	13	21	5.3	12	0	5	13	1	6	25	6.3		
05	Nicole Cummins	4-3	100	25.0	9-35	.257	3-12	.250	4-9	.444	0	4	4	1.0	7	0	7	8	1	7	25	6.3		
12	Aubrey Scott	4-0	56	14.0	8-17	.471	3-7	.429	6-10	.600	3	10	13	3.3	2	0	2	4	0	2	25	6.3		
21	Lauren Deveikis	4-2	89	22.3	4-25	.160	1-7	.143	4-4	1.000	3	4	7	1.8	8	0	4	9	0	3	13	3.3		
15	Shonell Benjamin	4-0	87	21.8	3-16	.188	0-0	.000	2-8	.250	8	18	26	6.5	17	1	10	19	1	6	8	2.0		
14	Liesl Hostetter	4-0	18	4.5	0-1	.000	0-0	.000	0-0	.000	0	1	1	0.3	5	0	0	2	0	0	0	0.0		
Team											6	15	21				1							
Total.....		4	800		69-243	.284	14-60	.233	37-65	.569	47	97	144	36.0	76	1	42	85	9	39	189	47.2		
Opponents.....		4	800		102-273	.374	21-83	.253	42-70	.600	71	136	207	51.8	63	-	66	87	12	53	267	66.8		

TEAM STATISTICS	LU	OPP
SCORING	189	267
Points per game	47.2	66.8
Scoring margin	-19.5	-
FIELD GOALS-ATT	69-243	102-273
Field goal pct	.284	.374
3 POINT FG-ATT	14-60	21-83
3-point FG pct	.233	.253
3-pt FG made per game	3.5	5.3
FREE THROWS-ATT	37-65	42-70
Free throw pct	.569	.600
F-Throws made per game	9.3	10.5
REBOUNDS	144	207
Rebounds per game	36.0	51.8
Rebounding margin	-15.7	-
ASSISTS	42	66
Assists per game	10.5	16.5
TURNOVERS	85	87
Turnovers per game	21.3	21.8
Turnover margin	+0.5	-
Assist/turnover ratio	0.5	0.8
STEALS	39	53
Steals per game	9.8	13.3
BLOCKS	9	12
Blocks per game	2.3	3.0
ATTENDANCE	251	725
Home games-Avg/Game	1-251	3-242
Neutral site-Avg/Game	-	0-0

Date	Opponent		Score	Att.
11/15/16	at Maranatha Baptist	W	61-51	205
11/17/16	MARIAN UNIVERSITY	W	51-48	251
* 12/02/16	at Illinois College	L	42-96	395
* 12/03/16	at Knox College	L	35-72	125

* - Conference game

Score by Periods	1st	2nd	3rd	4th	Totals
Lawrence University	44	42	62	41	189
Opponents	79	69	56	63	267

2016-17 Lawrence University Basketball
Lawrence University Points-Rebounds-Assists (as of Dec 06, 2016)
All games

				03	05	10	12	14	15	21
Opponent	Date	Score		KRAMER,NAT	CUMMINS,NI	HOESLEY,OL	SCOTT,AUBR	HOSTETTER,	BENJAMIN,S	DEVEIKIS,L
at Maranatha Baptist	11/15/16	61-51	w	7-4-1	15-1-1	8-4-1	11-5-0	0-0-0	6-4-5	4-3-2
MARIAN UNIVERSITY	11/17/16	51-48	w	0-3-1	5-2-4	19-6-1	6-3-0	0-0-0	0-7-3	5-2-1
at Illinois College	12/02/16	42-96	L	8-5-1	3-1-0	7-2-2	5-3-2	0-0-0	2-5-1	4-2-0
at Knox College	12/03/16	35-72	L	10-9-2	2-0-2	3-1-1	3-2-0	0-1-0	0-10-1	0-0-1

				25	32
Opponent	Date	Score		MINOGUE,GR	REEVES,LEA
at Maranatha Baptist	11/15/16	61-51	w	8-1-0	2-7-1
MARIAN UNIVERSITY	11/17/16	51-48	w	7-5-5	9-8-0
at Illinois College	12/02/16	42-96	L	6-4-1	7-1-1
at Knox College	12/03/16	35-72	L	9-3-0	8-9-1