

WS 09: Vaguely familiar melodies

Name _____

Portions of familiar melodies are notated below without rhythmic or metrical symbols. Identify the melody and, on the staff provided, notate it, supplying an appropriate meter signature and correct durational values. In most cases, there will be more than one correct answer, but try to be sensitive to the nuances of the melody and decide which of the several possibilities is the best interpretation. [Optional: transpose the pitches as indicated, providing as well the resulting key signature.]

1.

[M3]

2.

[m6]

3.

[m3]

4.

[P5]

5.

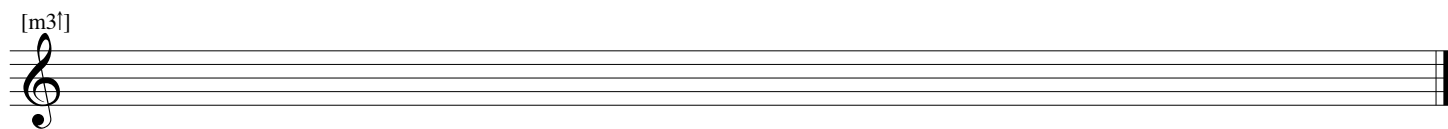
[m2]

Vaguely familiar melodies, continued

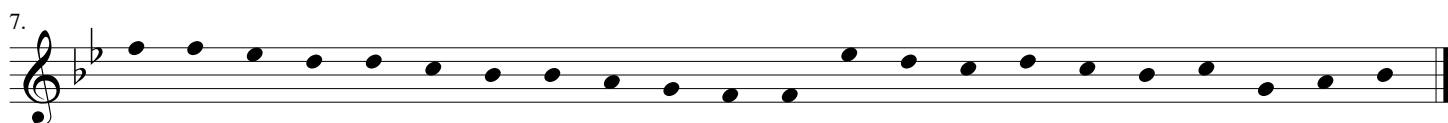
6.



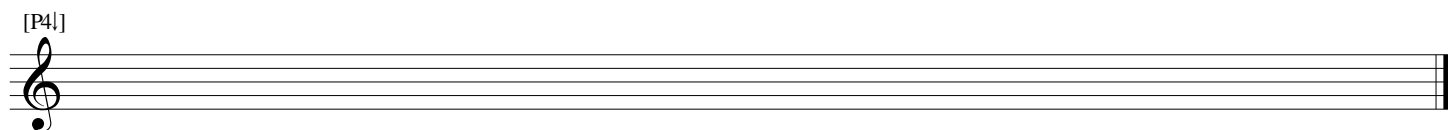
[m3]



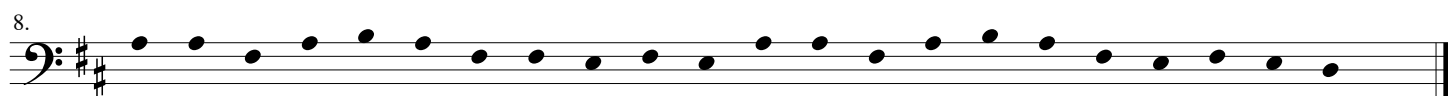
7.



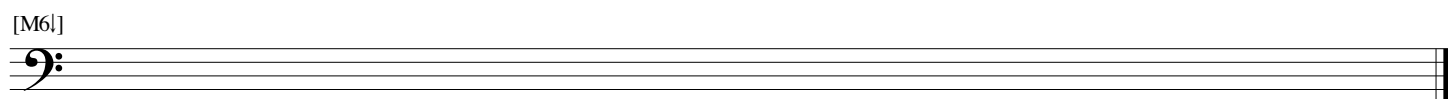
[P4]



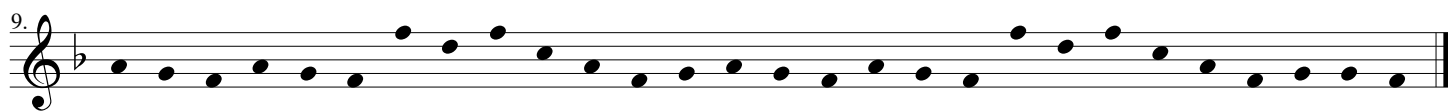
8.



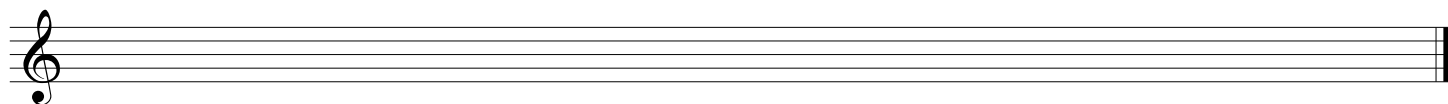
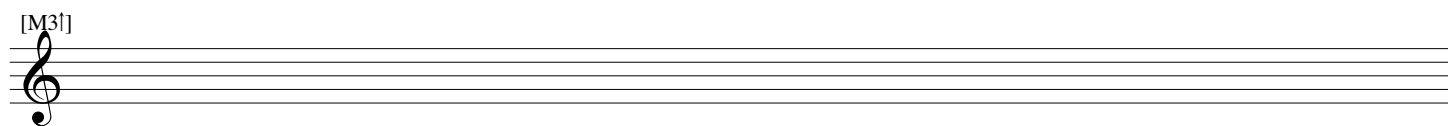
[M6]



9.

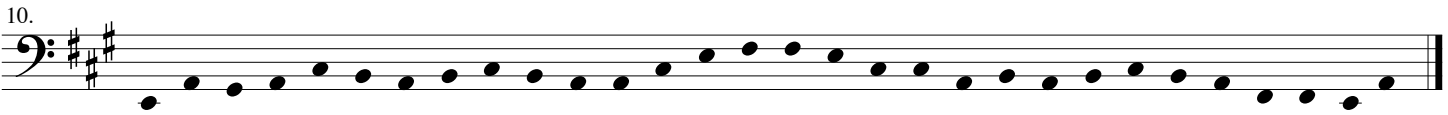


[M3]



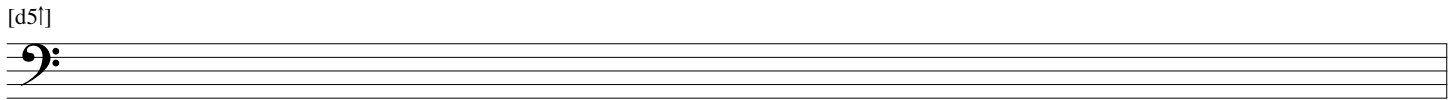
Vaguely familiar melodies, continued

10.

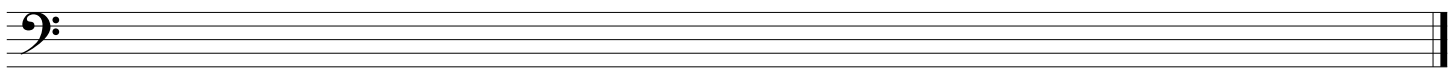


A single musical staff in bass clef with a key signature of three sharps (F#, C#, G#). It contains a continuous melodic line of 24 eighth notes. The notes start on G2 and ascend in a series of steps, with some intervals of a half step and some of a whole step, ending on G3.

[d5]

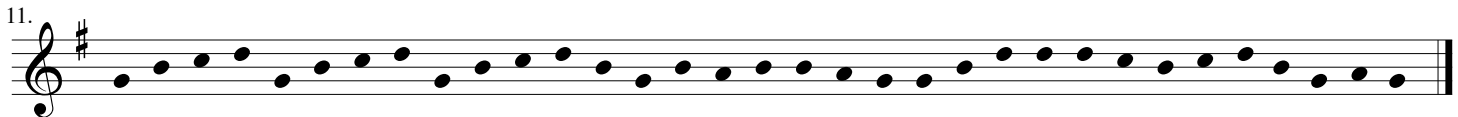


An empty musical staff in bass clef, intended for a fingering suggestion.



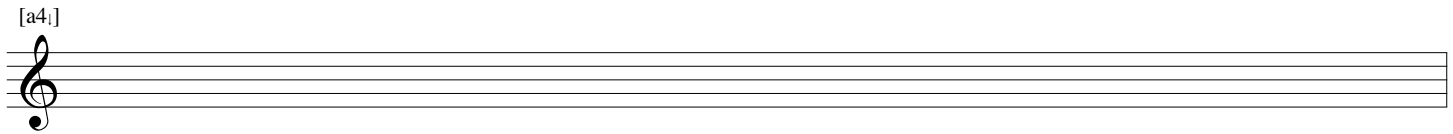
An empty musical staff in bass clef.

11.

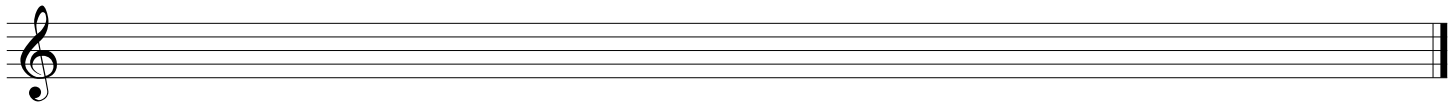


A single musical staff in treble clef with a key signature of one sharp (F#). It contains a continuous melodic line of 24 eighth notes. The notes start on G4 and ascend in a series of steps, ending on G5.

[a4i]




An empty musical staff in treble clef, intended for a fingering suggestion.



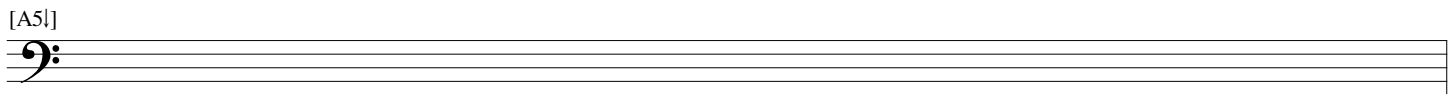
An empty musical staff in treble clef.

12.



A single musical staff in bass clef with a key signature of four sharps (F#, C#, G#, D#). It contains a continuous melodic line of 24 eighth notes. The notes start on G2 and ascend in a series of steps, ending on G3.

[A5]



An empty musical staff in bass clef, intended for a fingering suggestion.



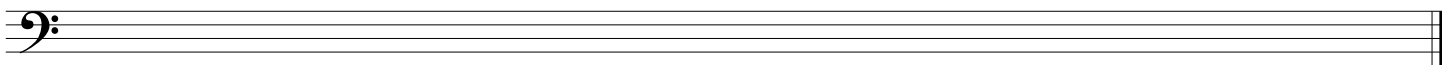
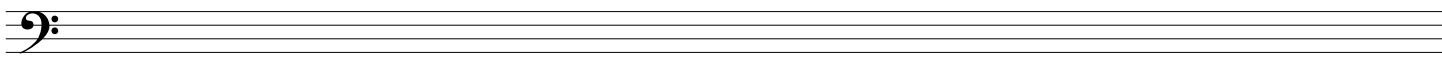
An empty musical staff in bass clef.

Vaguely familiar melodies, continued

13.



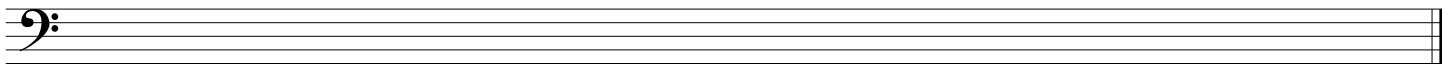
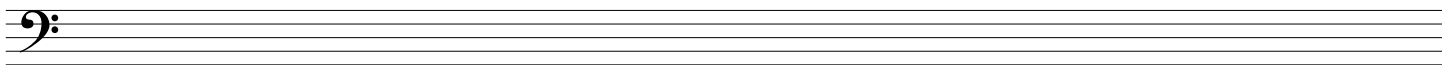
[d6l]



14.



[A2']



15.



[A4]

